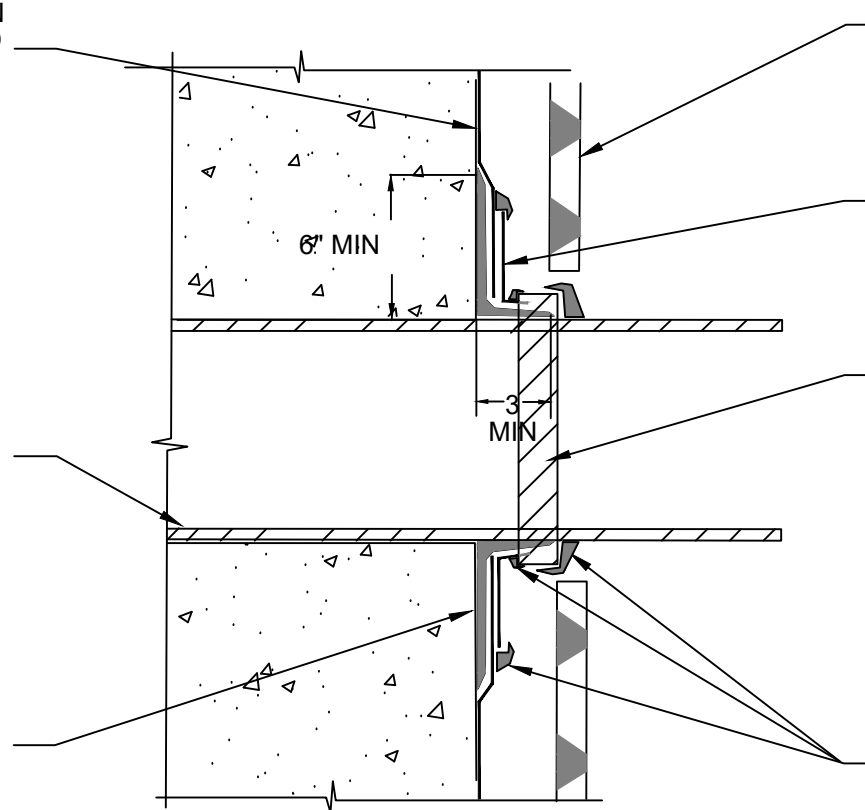


FIELD POLYGUARD 650 MEMBRANE ROUGH FIT AROUND PENETRATION AND ONTO SUBSTRATE PREPARED WITH POLYGUARD 650 LT LIQUID ADHESIVE OR POLYGUARD CALIFORNIA SEALANT AT A RATE OF 250 - 300 SF/GAL OR POLYGUARD 650 WB LIQUID ADHESIVE AT A RATE OF 350 - 400 SF/GAL

SECURED PENETRATION MEMBER CLEAN AND ABRASE 3" OF THE BASE OF PENETRATION SIDEWALLS - APPLY POLYGUARD 650 LT LIQUID ADHESIVE OR POLYGUARD CALIFORNIA SEALANT AT A RATE OF 250 -300 SQ/GAL OR POLYGUARD 650 WB LIQUID ADHESIVE AT A RATE OF 350 - 400 SF/GAL TO PENETRATION SIDEWALL

POLYGUARD DETAIL SEALANT PW OR POLYGUARD LM-95 APPLIED 6" ONTO RAW CONCRETE AND 3" ONTO ABRASED PENETRATION.



POLYGUARD POLYFLOW 15 / 15P SHEET MOLDED DRAIN

TARGET PATCH OF POLYGUARD 650 MEMBRANE TO CREATE A TIGHT SEAL AROUND PENETRATION

3" PIECE OF POLYGUARD 650 MEMBRANE WRAPPED AROUND THE PIPE AND TERMINATION OF THE TARGET PATCH AND ONTO POLYGUARD DETAIL SEALANT PW OR POLYGUARD LM-95

POLYGUARD DETAIL SEALANT PW OR POLYGUARD LM-95 APPLIED TO TERMINAL EDGES OF TARGET PATCH AND POLYGUARD 650 MEMBRANE

WP14

SECTION @ VERTICAL WALL PENETRATION

Polyguard Products, Inc.
P.O. Box 755 - Ennis, TX 75120
Phone: 214-515-5000
Web Site - www.polyguard.com

SPECIAL NOTE: IF ADHESIVE IS REQUIRED FOR SEAMS OR ENDLAPS DO NOT USE POLYGUARD 650 WB LIQUID ADHESIVE

©POLYGUARD PRODUCTS, INC.
MATERIAL SEPARATED FOR CLARITY

<small>The information provided is based on data and knowledge considered to be true and accurate and is offered for the users' consideration, investigation and verification, but we do not warrant the results to be obtained. Please read all data sheets, statements, recommendations or suggestions in conjunction with our conditions of sale, which apply to all goods supplied by us.</small>	NOT TO SCALE
	EFFECTIVE DATE: 10/01/2022
	SUPERCEDES: 01/17/2022