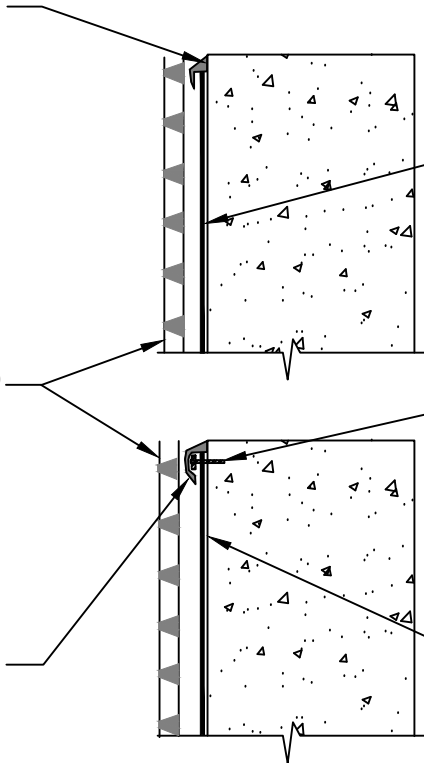


POLYGUARD DETAIL SEALANT OR
POLYGUARD LM-95 APPLIED TO THE TOP
TERMINAL EDGE

POLYGUARD POLYFLOW 15 / 15P MOLDED
SHEET DRAIN - FABRIC FACING BACKFILL

POLYGUARD DETAIL SEALANT PW OR
POLYGUARD LM-95 APPLIED TO THE TOP
OF THE TERMINATION BAR AND
COVERING MINIMUM 1/8" BEYOND
PERIMETER OF FASTENER HEADS



POLYGUARD MEMBRANE: 650, 650 PRM OR 650 WRM
APPLIED TO SUBSTRATE PREPARED WITH
POLYGUARD 650 LT LIQUID ADHESIVE OR POLYGUARD
CALIFORNIA SEALANT AT A RATE OF 250 -300 SF/GAL
OR POLYGUARD 650 WB LIQUID ADHESIVE AT A RATE
OF 350 TO 400 SF/GAL

1/8" X 1" METAL TERMINATION BAR FASTENED AT 8"
SPACING AND 2" FROM EACH END - TERM BAR
RECOMMENDED BY POLYGUARD - BY OTHERS

POLYGUARD MEMBRANE: 650, 650 PRM OR 650 WRM
APPLIED TO SUBSTRATE PREPARED WITH POLYGUARD
650 LT LIQUID ADHESIVE OR POLYGUARD CALIFORNIA
SEALANT AT A RATE OF 250 - 300 SF/GAL OR
POLYGUARD 650 WB LIQUID ADHESIVE AT A RATE OF
350 TO 400 SF/GAL

WP15

SECTION @ TOP OF WALL TERMINATION OPTIONS

Polyguard Products, Inc.
P.O. Box 755 - Ennis, TX 75120
Phone: 214-515-5000
Web Site - www.polyguard.com

**SPECIAL NOTE: IF ADHESIVE IS REQUIRED FOR
SEAMS OR ENDLAPS DO NOT USE POLYGUARD
650 WB LIQUID ADHESIVE**

©POLYGUARD PRODUCTS, INC.
MATERIAL SEPARATED FOR CLARITY

<small>The information provided is based on data and knowledge considered to be true and accurate and is offered for the users' consideration, investigation and verification, but we do not warrant the results to be obtained. Please read all data sheets, statements, recommendations or suggestions in conjunction with our conditions of sale, which apply to all goods supplied by us.</small>	NOT TO SCALE
	EFFECTIVE DATE: 12/16/2024
	SUPERCEDES: 07/15/2024