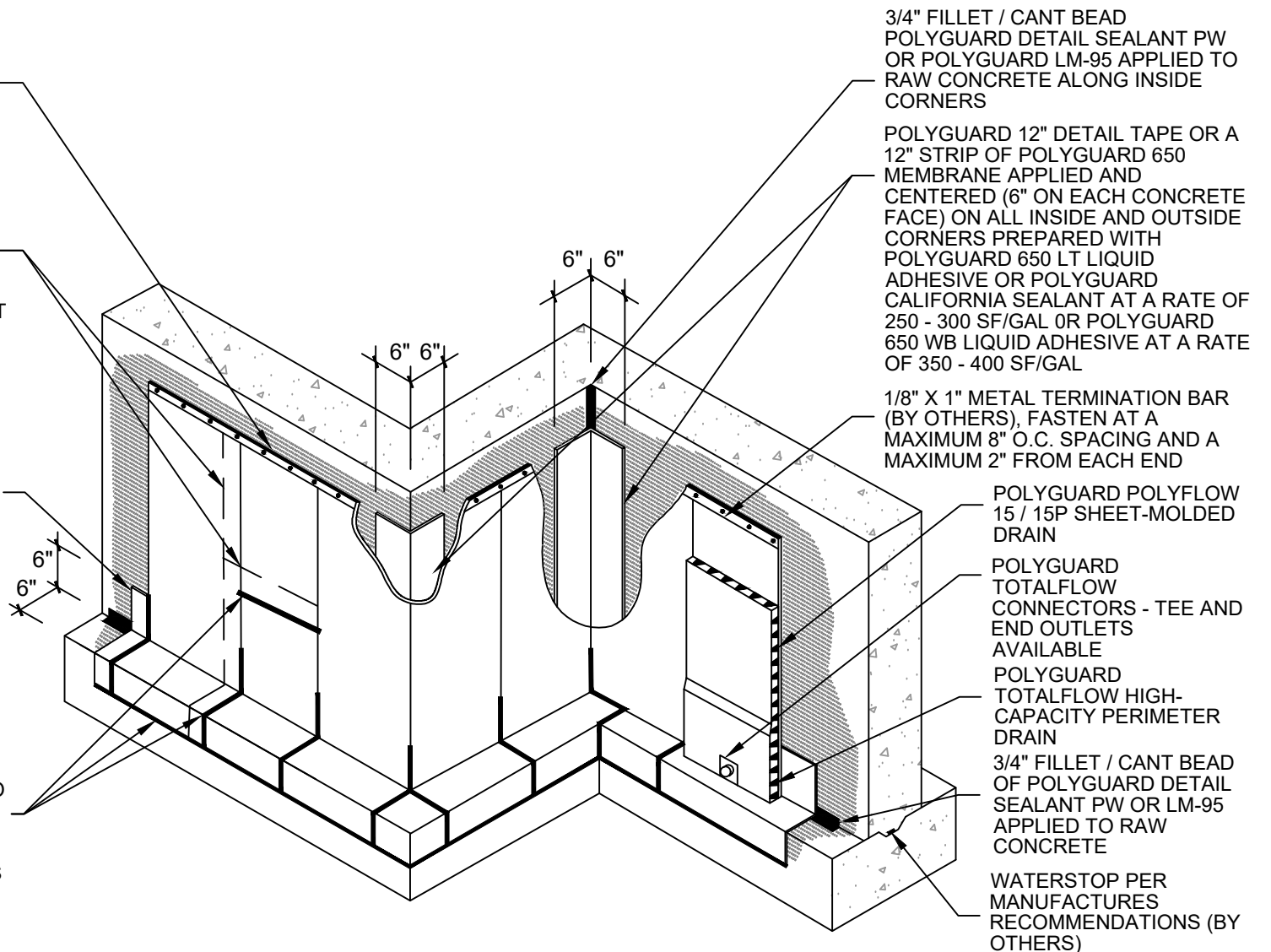


POLYGUARD DETAIL SEALANT PW OR POLYGUARD LM-95 APPLIED TO THE TOP EDGE OF TERMINATION BAR AND TO COVER A MINIMUM 1/8" BEYOND THE PERIMETER OF EACH FASTENER HEAD

POLYGUARD 650 MEMBRANE APPLIED TO SUBSTRATE PREPARED WITH POLYGUARD 650 LT LIQUID ADHESIVE OR POLYGUARD CALIFORNIA SEALANT AT A RATE OF 250 - 300 SF / GAL OR POLYGUARD 650 WB LIQUID ADHESIVE AT 350 - 400 SF/GAL - OVERLAPS ARE A MINIMUM 2-1/2" ON SIDE LAPS AND A MINIMUM 6" ON END LAPS

POLYGUARD 12" DETAIL TAPE OR A 12" STRIP OF POLYGUARD 650 MEMBRANE APPLIED AND CENTERED (6" ON EACH CONCRETE FACE) ON ALL INSIDE AND OUTSIDE CORNERS PREPARED WITH POLYGUARD 650 LT LIQUID ADHESIVE OR POLYGUARD CALIFORNIA SEALANT AT A RATE OF 250 - 300 SF/GAL OR POLYGUARD 650 WB LIQUID ADHESIVE AT A RATE OF 350 - 400 SF/GAL

POLYGUARD DETAIL SEALANT PW OR POLYGUARD LM-95 APPLIED TO SEAMS 12" FROM POLYGUARD 650 MEMBRANE CHANGES IN PLANE, AND ALONG POLYGUARD MEMBRANE TERMINAL CUT EDGES



3/4" FILLET / CANT BEAD
POLYGUARD DETAIL SEALANT PW
OR POLYGUARD LM-95 APPLIED TO
RAW CONCRETE ALONG INSIDE
CORNERS

POLYGUARD 12" DETAIL TAPE OR A
12" STRIP OF POLYGUARD 650
MEMBRANE APPLIED AND
CENTERED (6" ON EACH CONCRETE
FACE) ON ALL INSIDE AND OUTSIDE
CORNERS PREPARED WITH
POLYGUARD 650 LT LIQUID
ADHESIVE OR POLYGUARD
CALIFORNIA SEALANT AT A RATE OF
250 - 300 SF/GAL OR POLYGUARD
650 WB LIQUID ADHESIVE AT A RATE
OF 350 - 400 SF/GAL

1/8" X 1" METAL TERMINATION BAR
(BY OTHERS), FASTEN AT A
MAXIMUM 8" O.C. SPACING AND A
MAXIMUM 2" FROM EACH END

POLYGUARD POLYFLOW
15 / 15P SHEET-MOLDED
DRAIN

POLYGUARD
TOTALFLOW
CONNECTORS - TEE AND
END OUTLETS
AVAILABLE

POLYGUARD
TOTALFLOW HIGH-
CAPACITY PERIMETER
DRAIN

3/4" FILLET / CANT BEAD
OF POLYGUARD DETAIL
SEALANT PW OR LM-95
APPLIED TO RAW
CONCRETE

WATERSTOP PER
MANUFACTURES
RECOMMENDATIONS (BY
OTHERS)

WP3

OVERVIEW @ 650 MEMBRANE VERTICAL WALL APPLICATION

Polyguard Products, Inc.
P.O. Box 755 - Ennis, TX 75120
Phone: 214-515-5000
Web Site - www.polyguard.com

SPECIAL NOTE: IF ADHESIVE IS REQUIRED FOR SEAMS OR ENDLAPS DO NOT USE POLYGUARD 650 WB LIQUID ADHESIVE

©POLYGUARD PRODUCTS, INC.
MATERIAL SEPARATED FOR CLARITY

The information provided is based on data and knowledge considered to be true and accurate and is offered for the users' consideration, investigation and verification, but we do not warrant the results to be obtained. Please read all data sheets, statements, recommendations or suggestions in conjunction with our conditions of sale, which apply to all goods supplied by us.	NOT TO SCALE
	EFFECTIVE DATE: 05/12/2023
	SUPERCEDES: 10/01/2022