

POLYGUARD LM-95, DETAIL SEALANT PW,  
OR TRM SEALANT APPLIED AND TOOLED  
TO SEAL TERMINATION BAR FASTENER  
HEADS TO 1/8" BEYOND PERIMETER, AND  
ALONG TERMINATION BAR TOP EDGE

1" x 1/8" METAL TERMINATION BAR (BY OTHERS)  
OVER AND ALONG MEMBRANE TOP TERMINATION  
WITH FASTENERS (BY OTHERS) AT MAX. 8"  
SPACING O.C. AND MIN. 2" FROM EACH END

12" STRIP OF POLYGUARD TRM FLASHING OR  
650 TRM AT INSIDE AND OUTSIDE CORNERS  
PREPARED WITH POLYGUARD 650 LT LIQUID  
ADHESIVE APPLIED AT A RATE OF 250 - 300 SF  
/ GAL, OR OVER 650 WB LIQUID ADHESIVE  
APPLIED AT A RATE OF 350 - 400 SF / GAL

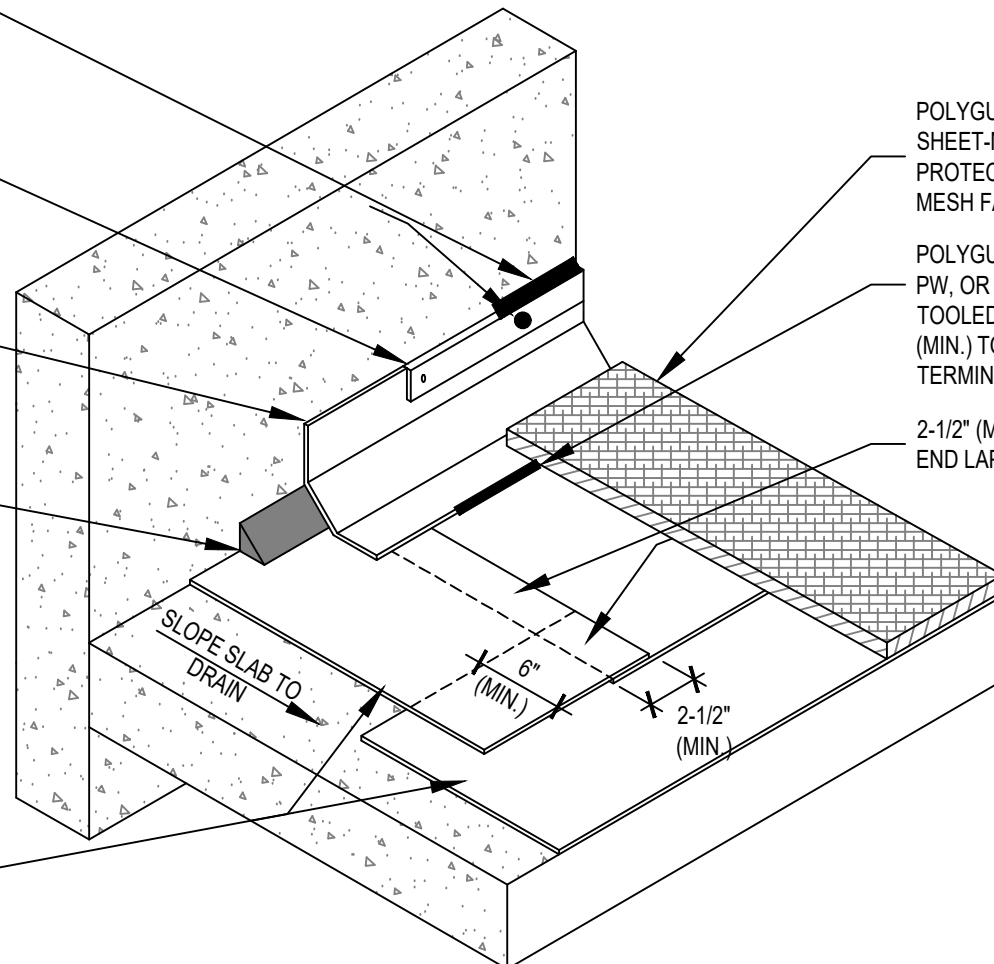
3/4" MIN. CANT / FILLET OF  
POLYGUARD LM-95, DETAIL  
SEALANT PW, OR TRM SEALANT

POLYGUARD 650 TRM APPLIED TO  
SUBSTRATES PREPARED WITH  
POLYGUARD 650 LT LIQUID ADHESIVE  
APPLIED AT A RATE OF 250 - 300 SF / GAL  
OR OVER 650 WB LIQUID ADHESIVE  
APPLIED AT A RATE OF 350 - 400 SF / GAL

POLYGUARD POLYFLOW 18  
SHEET-MOLDED DRAIN OR  
PROTECTION MAT - WOVEN  
MESH FACING TOPPING SLAB

POLYGUARD LM-95, DETAIL SEALANT  
PW, OR TRM SEALANT APPLIED AND  
TOOLED ONTO SEAMS AT 30 MILS  
(MIN.) TO 1" (MIN.) ON EACH SIDE OF  
TERMINAL EDGE

2-1/2" (MIN.) SIDE LAP AND 6" (MIN.)  
END LAP; SHINGLE LAPS TO DRAIN



**WPT7** ISOMETRIC @ 650 TRM - HORIZONTAL SLAB AT WALL TRANSITION

**GENERAL NOTE: IF ADHESIVE IS REQUIRED FOR SEAMS OR  
END LAPS, DO NOT USE POLYGUARD 650 WB LIQUID ADHESIVE.**

The information provided is based on data and knowledge considered to be true and accurate and is offered for the users' consideration, investigation and verification, but we do not warrant the results to be obtained. Please read all data sheets, statements, recommendations or suggestions in conjunction with our conditions of sale, which apply to all goods supplied by us.	NOT TO SCALE
	EFFECTIVE DATE: 12/17/2024
	SUPERCEDES: 12/10/2024