

**BS1**

**OVERVIEW - EARTH RETENTION SYSTEM**

Polyguard Products, Inc.  
P.O. Box 755 - Ennis, TX 75120  
Phone: 214-515-5000  
Web Site - www.polyguard.com

©POLYGUARD PRODUCTS, INC.  
MATERIAL SEPARATED FOR CLARITY

<small>The information provided is based on data and knowledge considered to be true and accurate and is offered for the users' consideration, investigation and verification, but we do not warrant the results to be obtained. Please read all data sheets, statements, recommendations or suggestions in conjunction with our conditions of sale, which apply to all goods supplied by us.</small>	NOT TO SCALE
	EFFECTIVE DATE: 07/15/2024
	SUPERCEDES: 10/01/2022

POLYGUARD POLYFLOW 15 / 15P SHEET MOLDED DRAIN - FABRIC FACING RETENTION SYSTEM

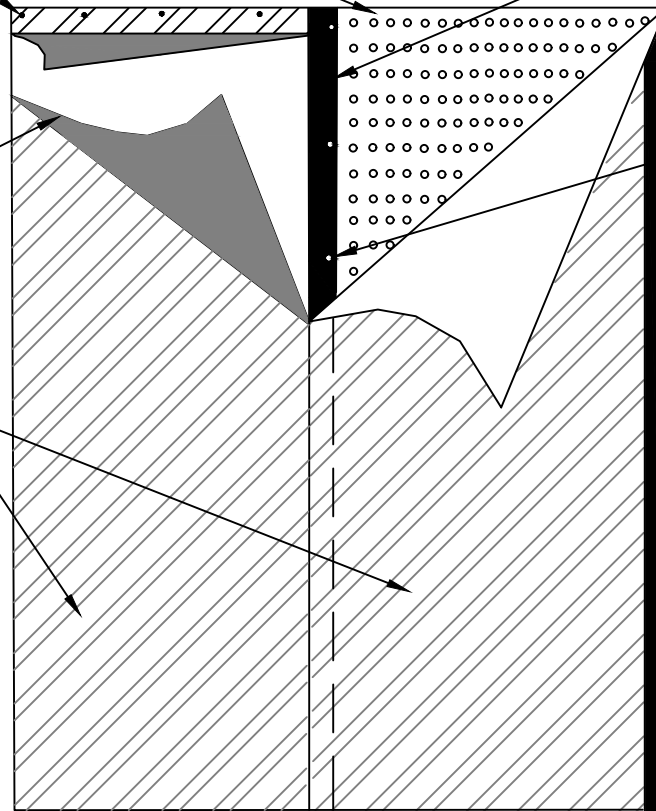
REFER TO POLYGUARD END LAP DETAIL

PROTECTIVE PACKAGING FILM REMOVED DURING INSTALLATION

POLYGUARD BLINDSIDE MEMBRANE FABRIC TOWARD CONCRETE POUR OR SHOTCRETE WHEN NOT IN THE WATER TABLE - CONSULT POLYGUARD IF IN THE WATER TABLE

4" FACTORY SELVAGE EDGE WITH PROTECTIVE RELEASE FILM COVERING

FASTENERS 18" - 24" O.C. INSTALLED IN OUTSIDE 1" OF SELVAGE EDGE - BY OTHERS



**BS2**

**OVERVIEW - 4" SELVAGE LAP SEAM & FASTENERS**

Polyguard Products, Inc.  
P.O. Box 755 - Ennis, TX 75120  
Phone: 214-515-5000  
Web Site - www.polyguard.com

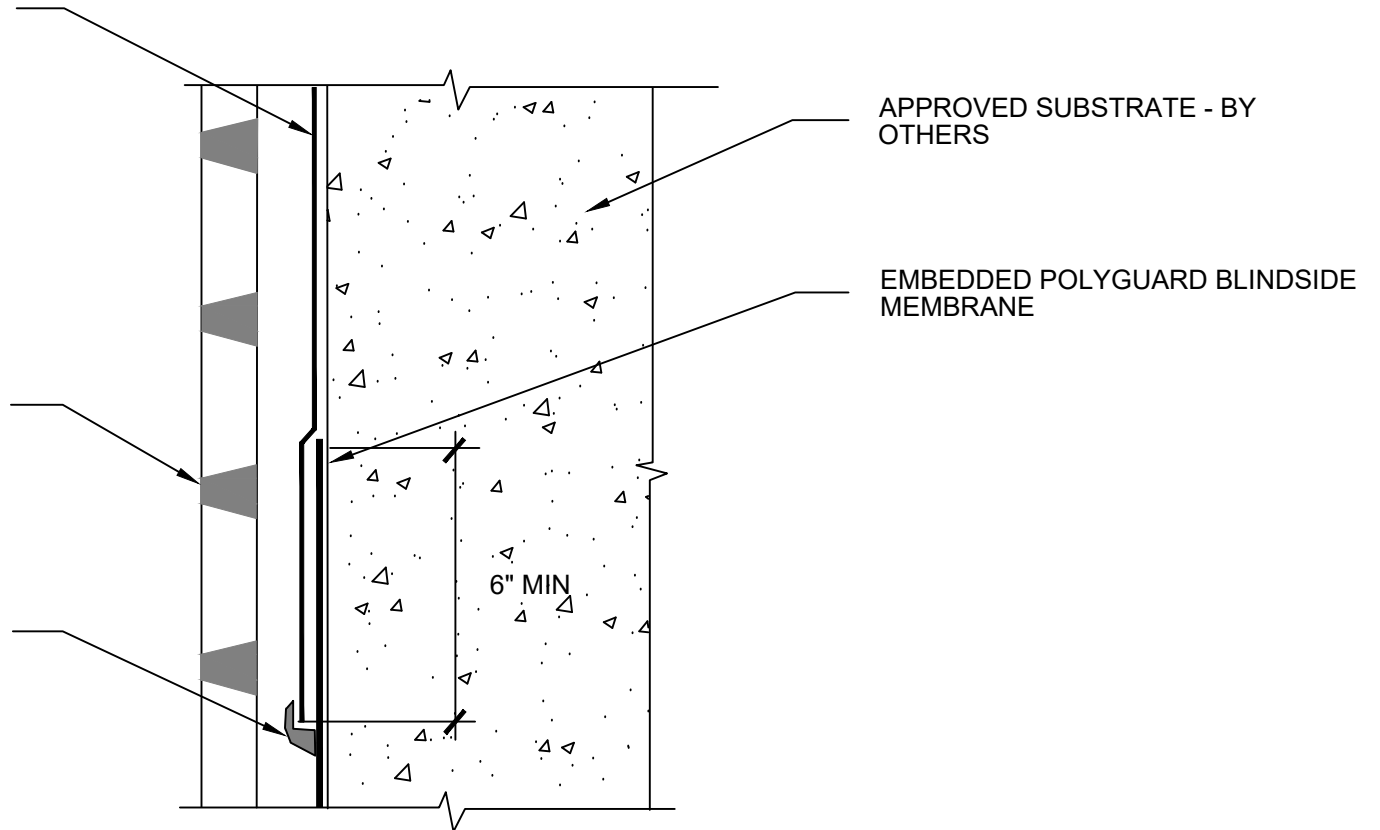
©POLYGUARD PRODUCTS, INC.  
MATERIAL SEPARATED FOR CLARITY

<small>The information provided is based on data and knowledge considered to be true and accurate and is offered for the users' consideration, investigation and verification, but we do not warrant the results to be obtained. Please read all data sheets, statements, recommendations or suggestions in conjunction with our conditions of sale, which apply to all goods supplied by us.</small>	NOT TO SCALE
	EFFECTIVE DATE: 07/15/2024
	SUPERCEDES: 10/01/2022

POLYGUARD MEMBRANE: 650, 650 PRM OR 650 WRM APPLIED TO CLEAN, DRY, FROST FREE SUBSTRATE PREPARED WITH POLYGUARD 650 LT LIQUID ADHESIVE OR POLYGUARD CALIFORNIA SEALANT AT A RATE OF 250 - 300 SF/GAL AND OVER EMBEDDED POLYGUARD BLINDSIDE MEMBRANE A MINIMUM OF 6"

POLYGUARD POLYFLOW 15 / 15P SHEET MOLDED DRAIN FABRIC TOWARD SOIL

90 MILS MINIMUM POLYGUARD DETAIL SEALANT PW APPLIED TO TERMINAL EDGE OF POLYGUARD MEMBRANE: 650, 650 PRM OR 650 WRM AND FEATHERED ONTO EACH SIDE OF THE LAP A MINIMUM OF 3/4"



APPROVED SUBSTRATE - BY OTHERS

EMBEDDED POLYGUARD BLINDSIDE MEMBRANE

6" MIN

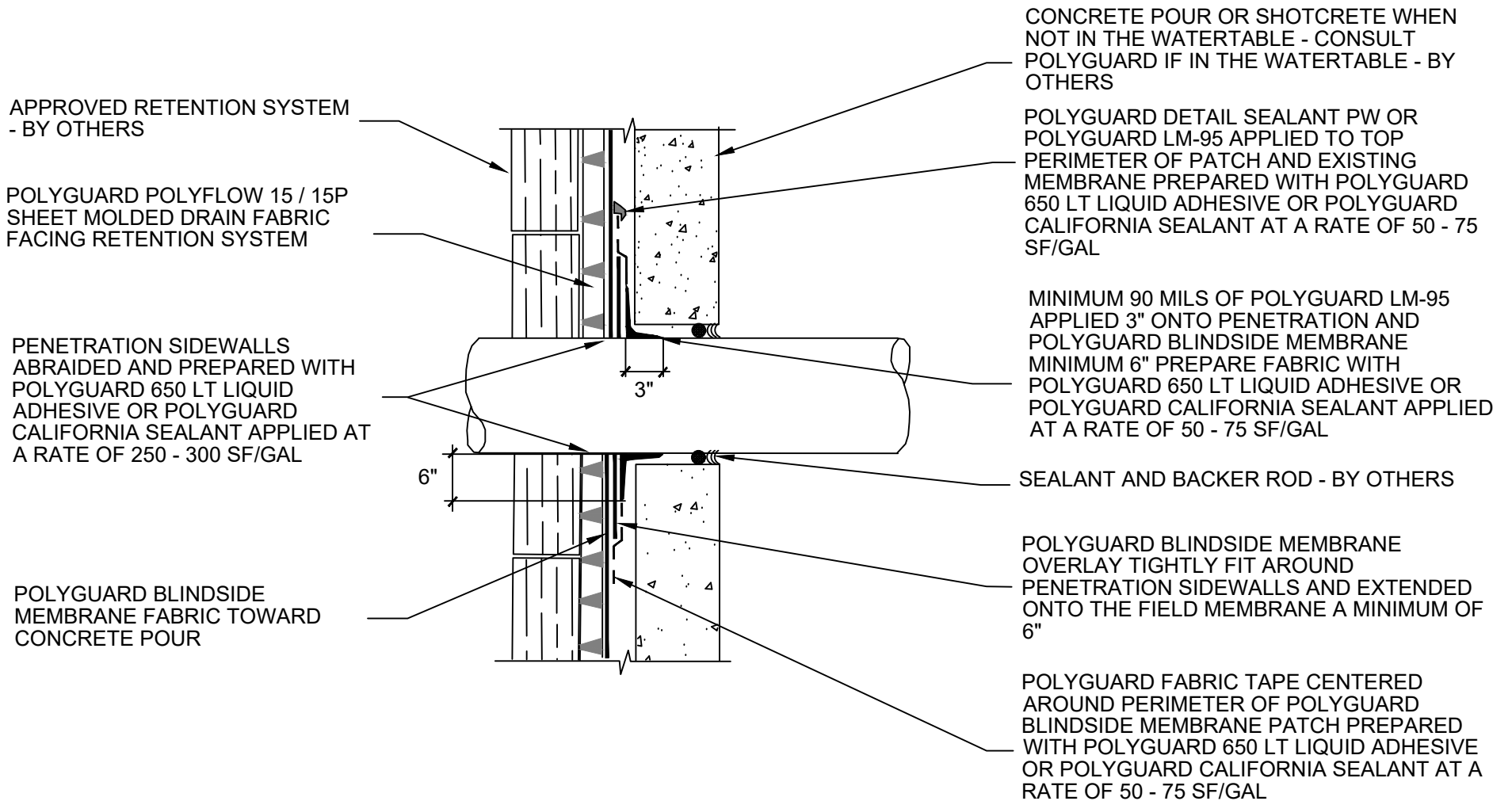
**BS3**

**SECTION @ EMBEDDED BLINDSIDE TIE IN TO 650 / 650 PRM / 650 WRM MEMBRANE**

©POLYGUARD PRODUCTS, INC.  
MATERIAL SEPARATED FOR CLARITY

Polyguard Products, Inc.  
P.O. Box 755 - Ennis, TX 75120  
Phone: 214-515-5000  
Web Site - www.polyguard.com

<small>The information provided is based on data and knowledge considered to be true and accurate and is offered for the users' consideration, investigation and verification, but we do not warrant the results to be obtained. Please read all data sheets, statements, recommendations or suggestions in conjunction with our conditions of sale, which apply to all goods supplied by us.</small>	NOT TO SCALE
	EFFECTIVE DATE: 12/16/2024
	SUPERCEDES: 10/01/2022



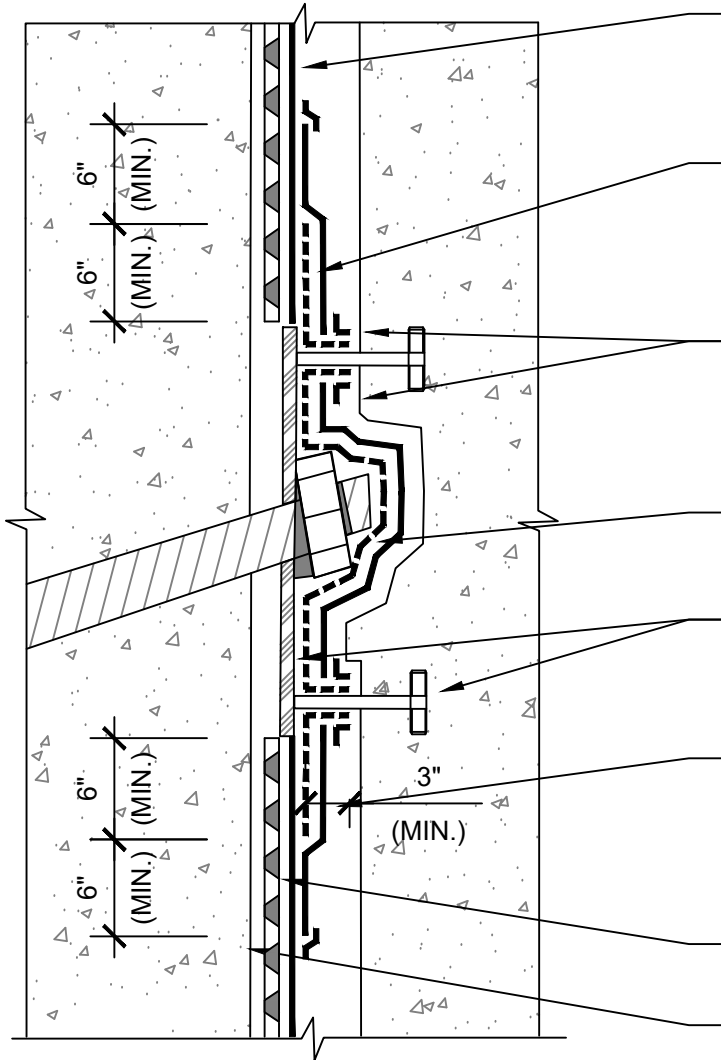
**BS4**

**SECTION @ PENETRATION ROUGH FIT AROUND PENETRATION SIDEWALL**

Polyguard Products, Inc.  
P.O. Box 755 - Ennis, TX 75120  
Phone: 214-515-5000  
Web Site - www.polyguard.com

©POLYGUARD PRODUCTS, INC.  
MATERIAL SEPARATED FOR CLARITY

<small>The information provided is based on data and knowledge considered to be true and accurate and is offered for the users' consideration, investigation and verification, but we do not warrant the results to be obtained. Please read all data sheets, statements, recommendations or suggestions in conjunction with our conditions of sale, which apply to all goods supplied by us.</small>	NOT TO SCALE
	EFFECTIVE DATE: 12/16/2024
	SUPERCEDES: 07/15/2024



POLYGUARD BLINDSIDE MEMBRANE FIELD SHEET WITH FABRIC TOWARD CONCRETE POUR OR SHOTCRETE WHEN NOT IN THE WATER TABLE - CONSULT POLYGUARD IF IN THE WATER TABLE, BUTT UP FLUSH TO STUD PLATE

POLYGUARD LM-95 APPLIED AND TOOLED FOR ADHESIVE BOND TO MINIMUM 90 MILS CONTINUOUS OVER SOIL NAIL, STUD PLATE, MINIMUM 3" ONTO EACH NELSON STUD, AND MINIMUM 6" ONTO POLYGUARD BLINDSIDE MEMBRANE FABRIC PREPARED WITH POLYGUARD 650 LT LIQUID ADHESIVE OR POLYGUARD CALIFORNIA SEALANT AT A RATE OF 50 - 75 SF / GAL

POLYGUARD LM-95 APPLIED AND TOOLED FOR ADHESIVE BOND TO MINIMUM 90 MILS CONTINUOUS OVER ALL POLYGUARD FABRIC TAPE EXPOSED EDGES AND POLYGUARD BLINDSIDE MEMBRANE FABRIC, PREPARE BOTH AREAS TO BE COVERED WITH POLYGUARD 650 LT LIQUID ADHESIVE OR POLYGUARD CALIFORNIA SEALANT AT A RATE OF 50 - 75 SF / GAL

EXISTING SOIL NAIL TO REMAIN, CLEAN AND DRY IN PREPARATION FOR POLYGUARD OVERLAY WATERPROOFING MATERIALS - BY OTHERS

EXISTING STUD PLATE AND NELSON STUDS TO REMAIN, CLEAN AND DRY IN PREPARATION FOR POLYGUARD OVERLAY WATERPROOFING MATERIALS - BY OTHERS

POLYGUARD FABRIC TAPE APPLIED OVER (SELECTED) POLYGUARD LM-95 LIQUID MEMBRANE OR POLYGUARD DETAIL SEALANT PW ON SOIL NAIL, STUD PLATE, AND POLYGUARD BLINDSIDE MEMBRANE; EXTEND A MINIMUM 6" ONTO POLYGUARD BLINDSIDE MEMBRANE FABRIC PREPARED WITH POLYGUARD 650 LT LIQUID ADHESIVE OR POLYGUARD CALIFORNIA SEALANT AT A RATE OF 50 - 75 SF / GAL

POLYGUARD POLYFLOW 15 MOLDED SHEET DRAIN WITH FABRIC FACING TOWARD APPROVED RETENTION SYSTEM

APPROVED RETENTION SYSTEM - BY OTHERS

**BS5**

**SECTION @ SOIL NAIL STUD PLATE CONDITION**

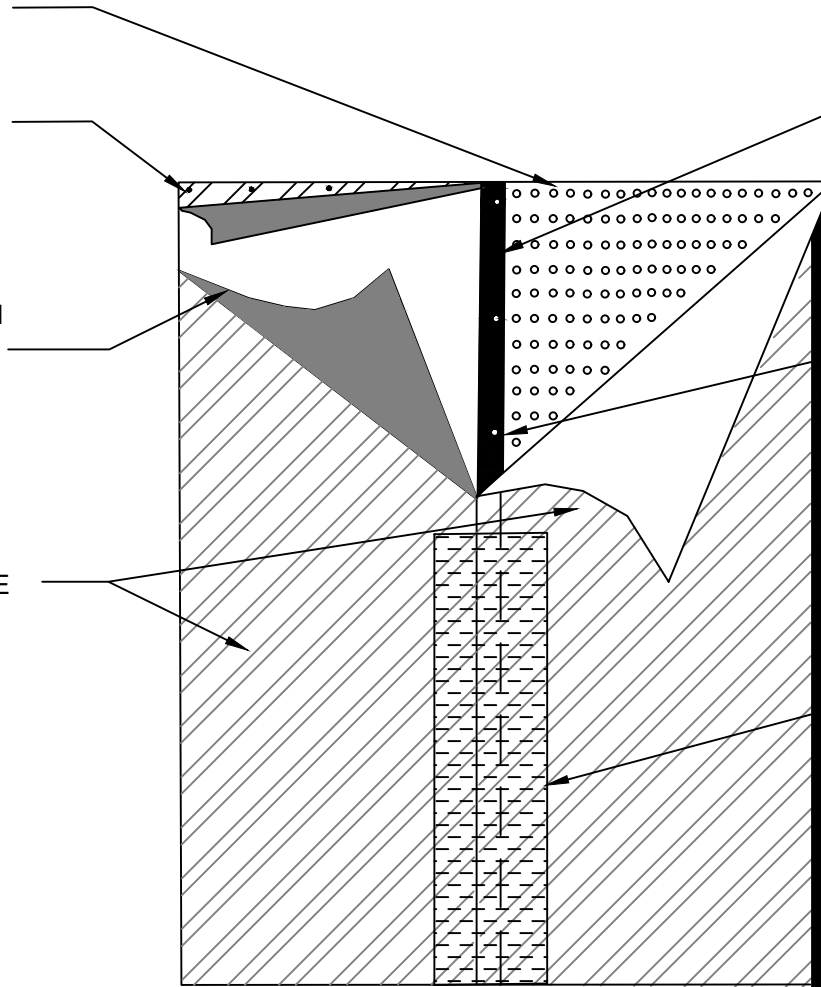
<small>The information provided is based on data and knowledge considered to be true and accurate and is offered for the users' consideration, investigation and verification, but we do not warrant the results to be obtained. Please read all data sheets, statements, recommendations or suggestions in conjunction with our conditions of sale, which apply to all goods supplied by us.</small>	NOT TO SCALE
	EFFECTIVE DATE: 07/15/2024
	SUPERCEDES: 10/01/2022

POLYGUARD POLYFLOW 15 /  
15P MOLDED SHEET DRAIN  
FABRIC FACING RETENTION  
SYSTEM

REFER TO POLYGUARD  
END LAP DETAIL

PROTECTIVE PACKAGING FILM  
REMOVED DURING  
INSTALLATION

POLYGUARD BLINDSIDE  
MEMBRANE FABRIC TOWARD  
CONCRETE POUR OR  
SHOTCRETE WHEN NOT IN THE  
WATER TABLE - CONSULT  
POLYGUARD IF IN THE WATER  
TABLE



4" FACTORY SELVAGE WITH  
PROTECTIVE RELEASE FILM COVERING

FASTENERS 18" - 24" O.C. INSTALLED IN  
OUTSIDE 1" OF SELVAGE EDGE - BY  
OTHERS

12" STRIP OF POLYGUARD FABRIC  
TAPE CENTERED OVER SEAM OF  
POLYGUARD BLINDSIDE MEMBRANE  
FABRIC PREPARED WITH POLYGUARD  
650 LT LIQUID ADHESIVE OR  
POLYGUARD CALIFORNIA SEALANT AT  
A RATE OF 50 - 75 SF/GAL

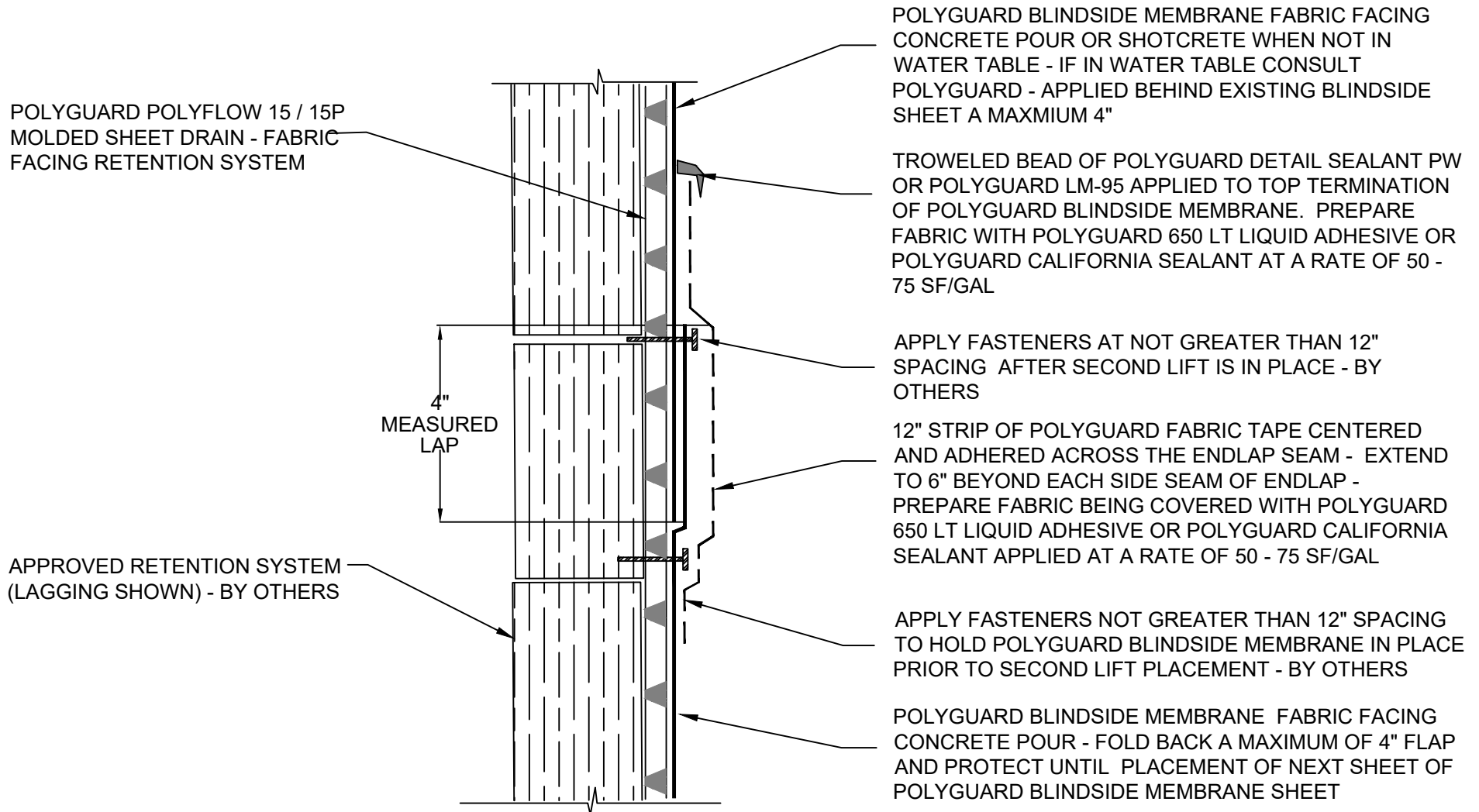
**BS6**

**SECTION @ REINFORCED SIDE LAP SEAM**

©POLYGUARD PRODUCTS, INC.  
MATERIAL SEPARATED FOR CLARITY

Polyguard Products, Inc.  
P.O. Box 755 - Ennis, TX 75120  
Phone: 214-515-5000  
Web Site - www.polyguard.com

<small>The information provided is based on data and knowledge considered to be true and accurate and is offered for the users' consideration, investigation and verification, but we do not warrant the results to be obtained. Please read all data sheets, statements, recommendations or suggestions in conjunction with our conditions of sale, which apply to all goods supplied by us.</small>	NOT TO SCALE
	EFFECTIVE DATE: 07/15/2024
	SUPERCEDES: 10/01/2022



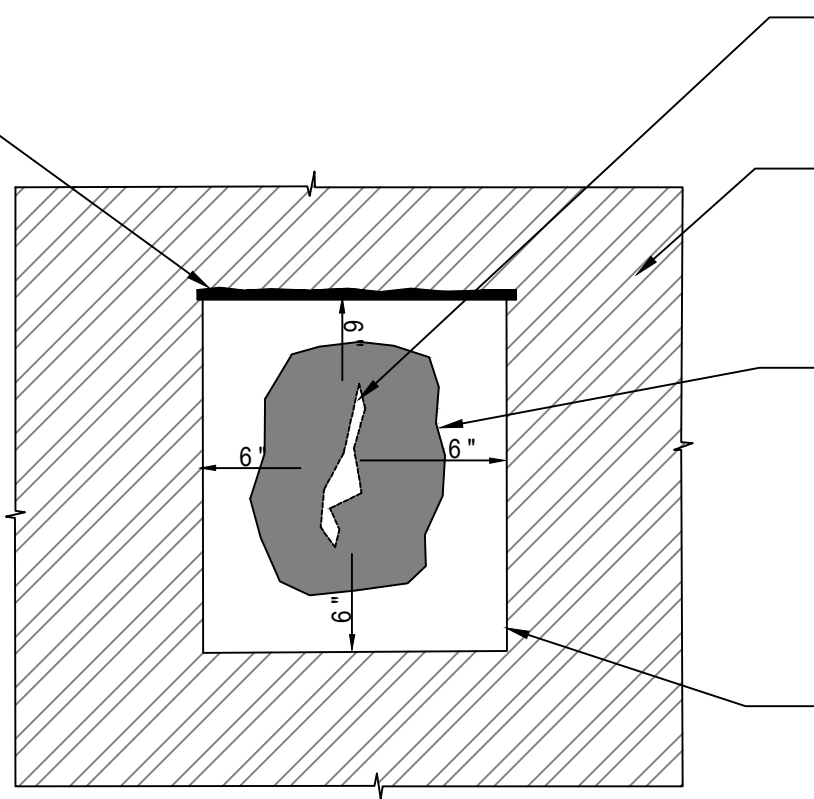
**BS7** SECTION @ END LAP

Polyguard Products, Inc.  
P.O. Box 755 - Ennis, TX 75120  
Phone: 214-515-5000  
Web Site - www.polyguard.com

©POLYGUARD PRODUCTS, INC.  
MATERIAL SEPARATED FOR CLARITY

<small>The information provided is based on data and knowledge considered to be true and accurate and is offered for the users' consideration, investigation and verification, but we do not warrant the results to be obtained. Please read all data sheets, statements, recommendations or suggestions in conjunction with our conditions of sale, which apply to all goods supplied by us.</small>	NOT TO SCALE
	EFFECTIVE DATE: 12/16/2024
	SUPERCEDES: 07/15/2024

TROWELED BEAD OF POLYGUARD DETAIL SEALANT PW OR POLYGUARD LM-95 APPLIED TO TOP EDGE OF REPAIR PATCH AND TOOLED TO A FEATHERED EDGE - ADHESIVE OR SEALANT APPLICATION NOT REQUIRED



REPAIR AREA

POLYGUARD BLINDSIDE MEMBRANE FABRIC FACING CONCRETE POUR

MINIMUM 60 MILS OF POLYGUARD LM-95 COVERING THE DAMAGED AREA AND EXTENDING A MINIMUM OF 1" BEYOND DAMAGE IN ALL DIRECTIONS OVER FABRIC OF POLYGUARD BLINDSIDE MEMBRANE PREPARED WITH POLYGUARD 650 LT LIQUID ADHESIVE OR POLYGUARD CALIFORNIA SEALANT AT A RATE OF 50 - 75 SF/GAL PRIOR TO POLYGUARD LM-95

POLYGUARD FABRIC TAPE APPLIED A MINIMUM OF 6" IN ALL DIRECTIONS PAST DAMAGE AND ONTO POLYGUARD BLINDSIDE AND CURED POLYGUARD LM-95 - PREPARE FABRIC OF POLYGUARD BLINDSIDE WITH POLYGUARD 650 LT LIQUID ADHESIVE OR POLYGUARD CALIFORNIA SEALANT AT A RATE OF 50 - 75 SF/GAL

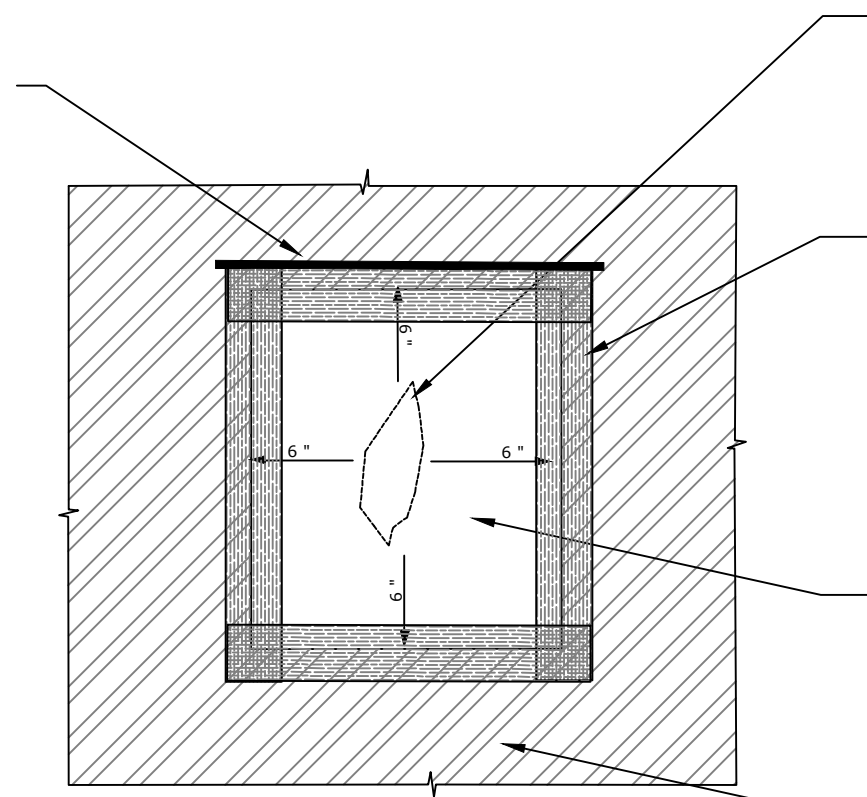
**BS8**

**SECTION @ REPAIR PATCH OVER DAMAGE LESS THAN 2"**

<small>The information provided is based on data and knowledge considered to be true and accurate and is offered for the users' consideration, investigation and verification, but we do not warrant the results to be obtained. Please read all data sheets, statements, recommendations or suggestions in conjunction with our conditions of sale, which apply to all goods supplied by us.</small>	NOT TO SCALE
	EFFECTIVE DATE: 07/15/2024
	SUPERCEDES: 10/01/2022



BEAD OF POLYGUARD DETAIL SEALANT PW OR POLYGUARD LM-95 APPLIED TO EDGE OF REPAIR PATCH - ADHESIVE OR SEALANT NOT REQUIRED



REPAIR AREA

APPLY A 12" STRIP OF POLYGUARD FABRIC TAPE OVER EDGES OF PATCH OF AND ONTO EXISTING POLYGUARD BLINDSIDE MEMBRANE PREPARED WITH POLYGUARD 650 LT LIQUID ADHESIVE OR POLYGUARD CALIFORNIA SEALANT AT A RATE OF 50 - 75 SF/GAL

PIECE OF POLYGUARD BLINDSIDE MEMBRANE CUT 6" LARGER THAN DAMAGE IN ALL DIRECTIONS APPLY PATCH OVER THE DAMAGED AREA AND ONTO EXISTING POLYGUARD BLINDSIDE MEMBRANE.

EXISTING POLYGUARD BLINDSIDE MEMBRANE

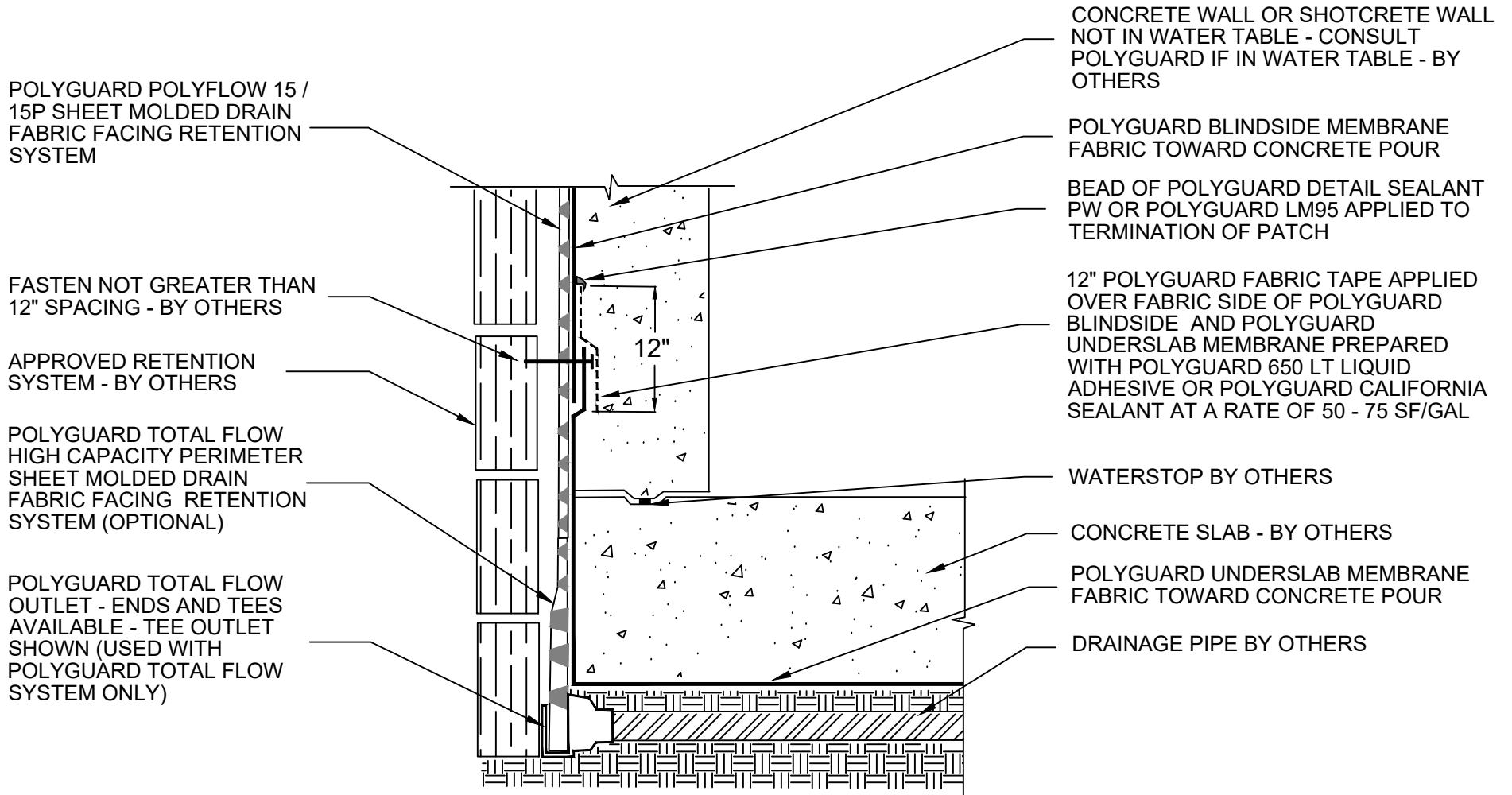
**BS9**

**SECTION @ REPAIR PATCH OVER DAMAGE GREATER THAN 2"**

Polyguard Products, Inc.  
P.O. Box 755 - Ennis, TX 75120  
Phone: 214-515-5000  
Web Site - www.polyguard.com

©POLYGUARD PRODUCTS, INC.  
MATERIAL SEPARATED FOR CLARITY

<small>The information provided is based on data and knowledge considered to be true and accurate and is offered for the users' consideration, investigation and verification, but we do not warrant the results to be obtained. Please read all data sheets, statements, recommendations or suggestions in conjunction with our conditions of sale, which apply to all goods supplied by us.</small>	NOT TO SCALE
	EFFECTIVE DATE: 07/15/2024
	SUPERCEDES: 10/01/2022



**BS10**

**SECTION @ BLINDSIDE WITH TOTAL FLOW TIE IN TO UNDERSLAB**

Polyguard Products, Inc.  
P.O. Box 755 - Ennis, TX 75120  
Phone: 214-515-5000  
Web Site - www.polyguard.com

©POLYGUARD PRODUCTS, INC.  
MATERIAL SEPARATED FOR CLARITY

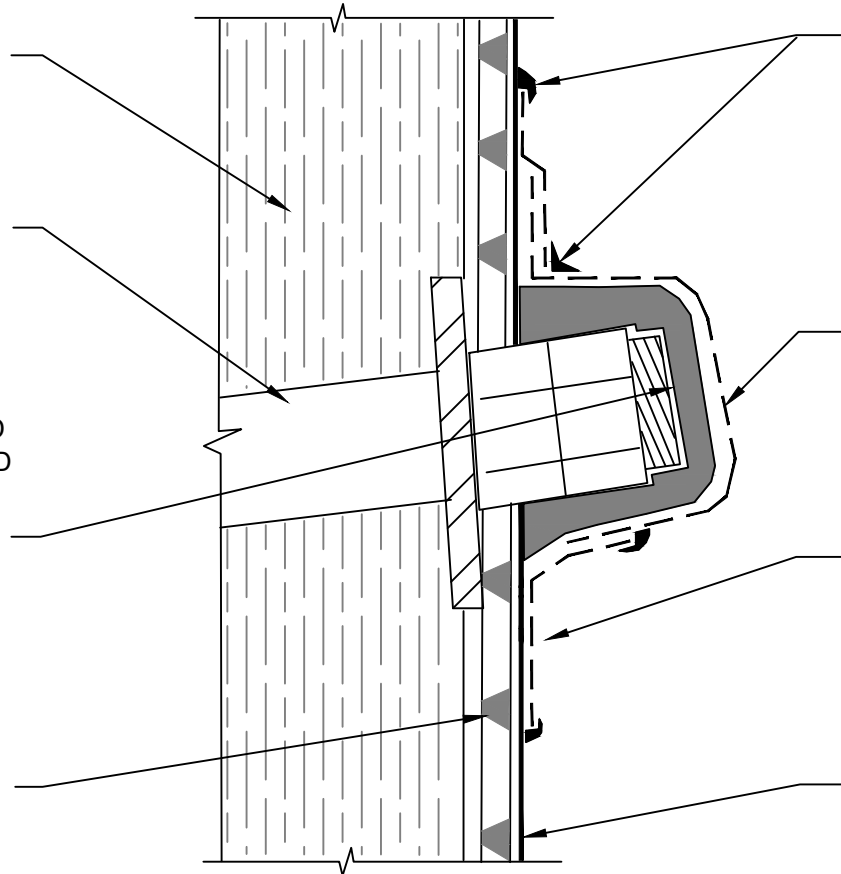
<small>The information provided is based on data and knowledge considered to be true and accurate and is offered for the users' consideration, investigation and verification, but we do not warrant the results to be obtained. Please read all data sheets, statements, recommendations or suggestions in conjunction with our conditions of sale, which apply to all goods supplied by us.</small>	NOT TO SCALE
	EFFECTIVE DATE: 07/15/2024
	SUPERCEDES: 10/01/2022

APPROVED RETENTION SYSTEM  
LAGGING SHOWN - BY OTHERS

SOIL NAIL - BY OTHERS

90 MILS MINIMUM OF POLYGUARD  
LM-95 APPLIED OVER POLYGUARD  
BLINDSIDE MEMBRANE AND SOIL  
NAIL HEAD - PREPARE FABRIC  
WITH POLYGUARD 650 LT LIQUID  
ADHESIVE OR POLYGUARD  
CALIFORNIA SEALANT AT A RATE  
OF 50 - 75 SF/GAL

POLYGUARD POLYFLOW 15 /15P  
MOLDED SHEET DRAIN FABRIC  
TOWARD RETENTION SYSTEM



POLYGUARD DETAIL SEALANT PW OR  
POLYGUARD LM-95 APPLIED OVER  
TERMINATION OF POLYGUARD FABRIC  
TAPE AND ONTO POLYGUARD BLINDSIDE  
MEMBRANE - PREPARE FABRIC WITH  
POLYGUARD 650 LT LIQUID ADHESIVE OR  
POLYGUARD CALIFORNIA SEALANT AT A  
RATE OF 50 - 75 SF/GAL

POLYGUARD FABRIC TAPE APPLIED OVER  
POLYGUARD BLINDSIDE MEMBRANE AND  
POLYGUARD LM-95 - PREPARE FABRIC  
WITH POLYGUARD 650 LT LIQUID  
ADHESIVE OR POLYGUARD CALIFORNIA  
SEALANT AT A RATE OF 50 - 75 SF/GAL

POLYGUARD FABRIC TAPE APPLIED ONTO  
POLYGUARD FABRIC TAPE AND ONTO  
POLYGUARD BLINDSIDE MEMBRANE  
PREPARED WITH POLYGUARD 650 LT  
LIQUID ADHESIVE OR POLYGUARD  
CALIFORNIA SEALANT AT A RATE OF 50 -  
75 SF/GAL

POLYGUARD BLINDSIDE MEMBRANE  
FABRIC TOWARD CONCRETE POUR OR  
SHOTCRETE NOT IN THE WATER TABLE -  
CONSULT POLYGUARD IF IN THE WATER  
TABLE

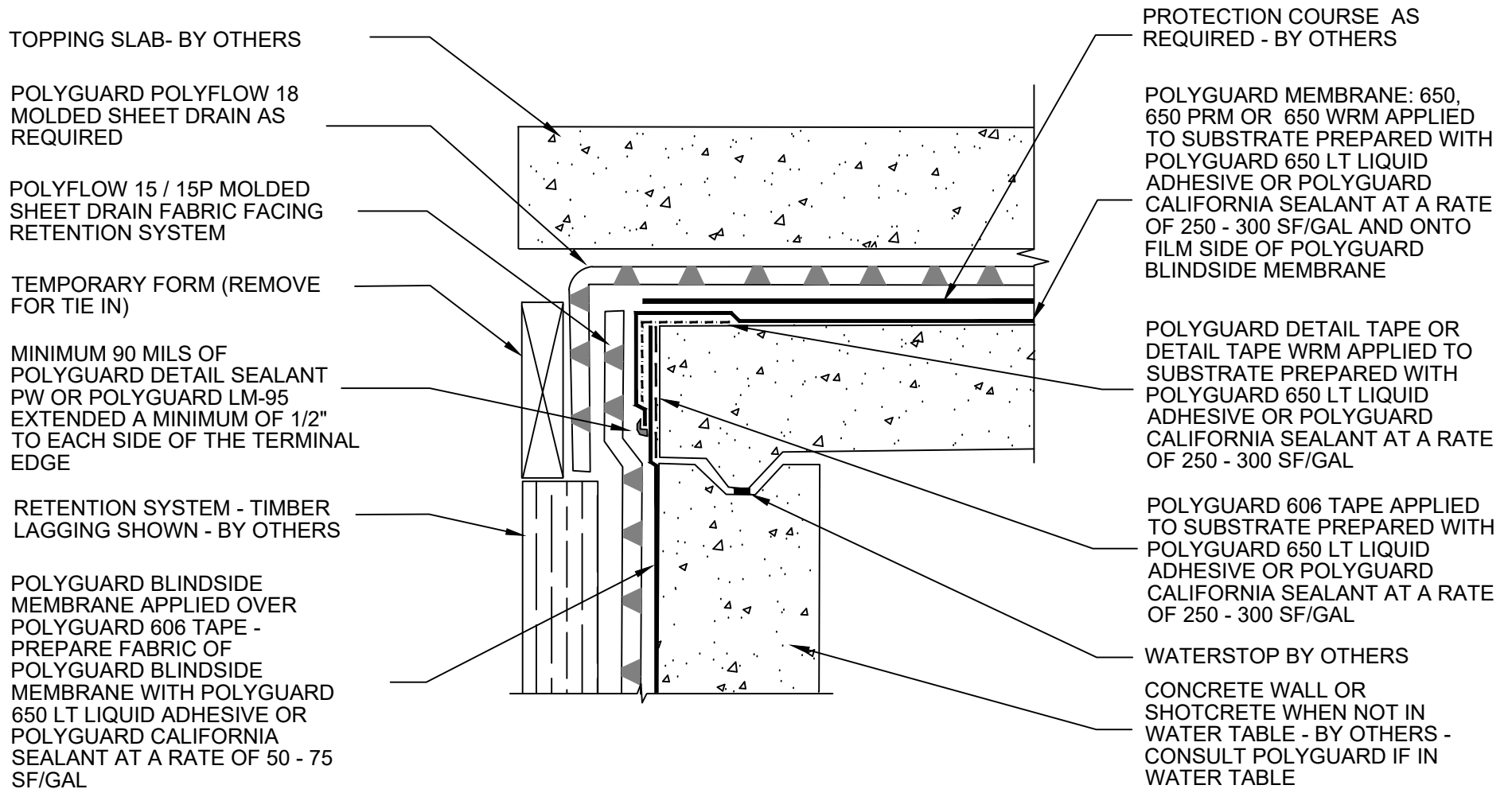
**BS11**

**SECTION @ TIE BACK / SOIL NAIL HEAD**

©POLYGUARD PRODUCTS, INC.  
MATERIAL SEPARATED FOR CLARITY

Polyguard Products, Inc.  
P.O. Box 755 - Ennis, TX 75120  
Phone: 214-515-5000  
Web Site - www.polyguard.com

<small>The information provided is based on data and knowledge considered to be true and accurate and is offered for the users' consideration, investigation and verification, but we do not warrant the results to be obtained. Please read all data sheets, statements, recommendations or suggestions in conjunction with our conditions of sale, which apply to all goods supplied by us.</small>	NOT TO SCALE
	EFFECTIVE DATE: 07/15/2024
	SUPERCEDES: 10/01/2022



**BS12**

**SECTION @ BLINDSIDE TIE IN TO 650 / 650 PRM / 650 WRM MEMBRANE**

Polyguard Products, Inc.  
P.O. Box 755 - Ennis, TX 75120  
Phone: 214-515-5000  
Web Site - www.polyguard.com

©POLYGUARD PRODUCTS, INC.  
MATERIAL SEPARATED FOR CLARITY

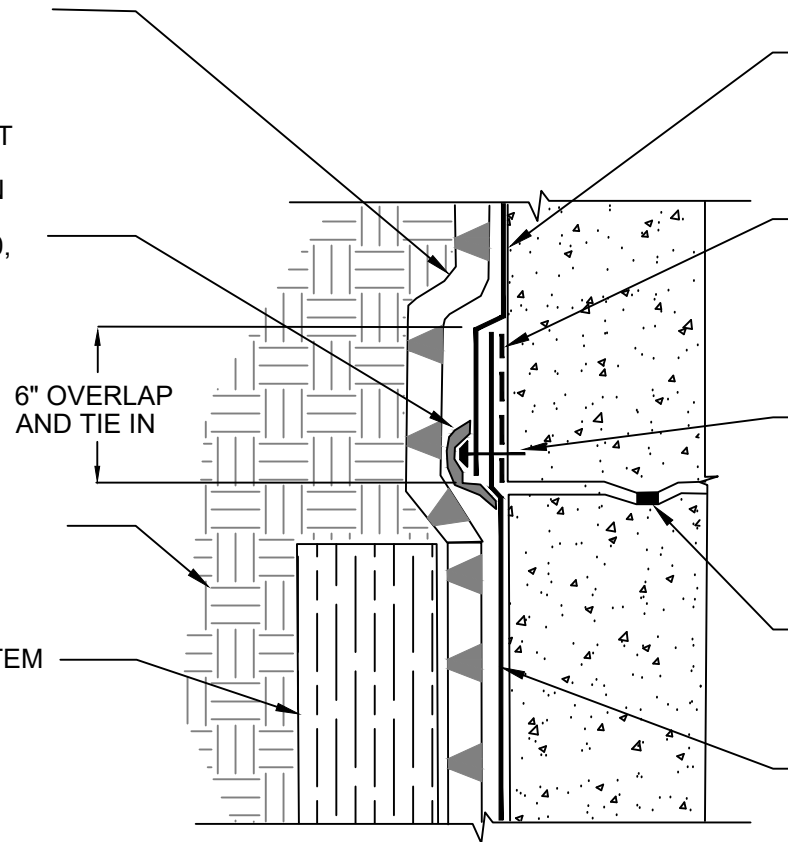
<small>The information provided is based on data and knowledge considered to be true and accurate and is offered for the users' consideration, investigation and verification, but we do not warrant the results to be obtained. Please read all data sheets, statements, recommendations or suggestions in conjunction with our conditions of sale, which apply to all goods supplied by us.</small>	NOT TO SCALE
	EFFECTIVE DATE: 12/16/2024
	SUPERCEDES: 07/15/2024

POLYGUARD POLYFLOW 15 / 15P  
MOLDED SHEET DRAINAGE -  
FABRIC FACING RETENTION  
SYSTEM AND BACKFILL

MINIMUM 90 MILS OF  
POLYGUARD DETAIL SEALANT  
PW OR POLYGUARD LM-95  
APPLIED OVER TERMINATION  
STRIP AND TIE IN SEAMS OF  
POLYGUARD MEMBRANE: 650,  
650 PRM OR 650 WRM AND  
POLYGUARD BLINDSIDE  
MEMBRANE EXTENDED A  
MINIMUM OF 1/2" PAST  
TERMINAL EDGE

SOIL - BY OTHERS

APPROVED RETENTION SYSTEM  
- BY OTHERS



POLYGUARD MEMBRANE: 650, 650 PRM OR 650  
WRM APPLIED TO CLEAN, DRY, FROST FREE  
SUBSTRATE PREPARED WITH POLYGUARD 650 LT  
LIQUID ADHESIVE OR POLYGUARD CALIFORNIA  
SEALANT AT A RATE OF 250 - 300 SF/GAL AND  
ONTO EXISTING POLYGUARD BLINDSIDE  
MEMBRANE MINIMUM OF 6"

POLYGUARD 606 TAPE APPLIED TO CLEAN, DRY,  
FROST FREE SUBSTRATE PREPARED WITH  
POLYGUARD 650 LT LIQUID ADHESIVE OR  
POLYGUARD CALIFORNIA SEALANT AT A RATE OF  
250 - 300 SF/GAL

1/8" X 1" METAL TERMINATION STRIP ALIGNED  
ALONG BOTTOM EDGE OF POLYGUARD 650, 650  
PRM OR 650 WRM MEMBRANE WITH FASTENERS  
SPACED 2" INWARD FROM END OF TERMINATION  
STRIP AND NOT MORE THAN 8" SPACING BETWEEN  
FASTENERS - IF TERMINATION IS NOT IN WATER  
TABLE NO TERM BAR IS REQUIRED - BY OTHERS

WATERSTOP - BY OTHERS

POLYGUARD BLINDSIDE MEMBRANE FABRIC  
TOWARD CONCRETE POUR OR SHOTCRETE WHEN  
NOT IN WATER TABLE - CONSULT POLYGUARD IF IN  
THE WATER TABLE - FOLD BACK TOP FLAP AND  
PREPARE WITH POLYGUARD 650 LT LIQUID  
ADHESIVE OR POLYGUARD CALIFORNIA SEALANT  
AT A RATE OF 50 - 75 SF/GAL PRIOR TO APPLYING  
OVER POLYGUARD 606 TAPE

**BS13**

**SECTION @ VERTICAL TERMINATION OF 650 / 650 PRM / 650 WRM TO BLINDSIDE MEMBRANE**

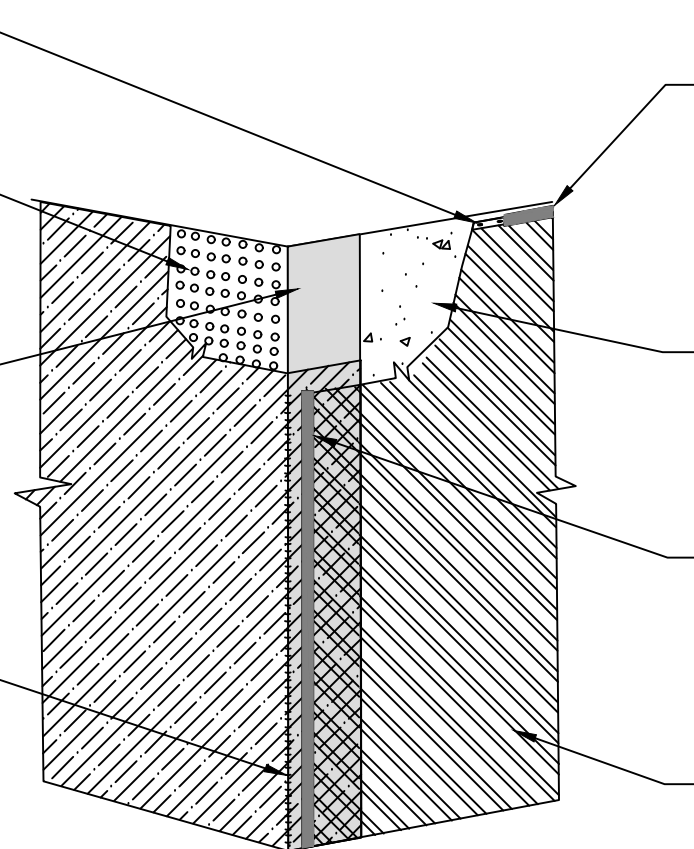
<small>The information provided is based on data and knowledge considered to be true and accurate and is offered for the users' consideration, investigation and verification, but we do not warrant the results to be obtained. Please read all data sheets, statements, recommendations or suggestions in conjunction with our conditions of sale, which apply to all goods supplied by us.</small>	NOT TO SCALE
	EFFECTIVE DATE: 12/16/2024
	SUPERCEDES: 07/15/2024

1/8" x 1" METAL TERMINATION STRIP ALIGNED ALONG TOP EDGE OF POLYGUARD 650, 650 PRM OR 650 WRM MEMBRANE AND FASTENED NOT GREATER THAN 8" SPACING - BY OTHERS

POLYGUARD POLYFLOW 15 /15P MOLDED SHEET DRAIN - FABRIC TOWARD RETENTION SYSTEM

12" STRIP OF POLYGUARD 606 TAPE APPLIED TO CLEAN, DRY AND FROST FREE CONCRETE PREPARED WITH POLYGUARD 650 LT LIQUID ADHESIVE OR POLYGUARD CALIFORNIA SEALANT AT A RATE OF 250 - 300 SF/GAL

12" POLYGUARD BLINDSIDE MEMBRANE TAIL APPLIED OVER 12" STRIP OF POLYGUARD 606 TAPE - PREPARE FABRIC SIDE OF POLYGUARD BLINDSIDE MEMBRANE WITH POLYGUARD 650 LT LIQUID ADHESIVE OR POLYGUARD CALIFORNIA SEALANT AT A RATE OF 50 - 75 SF/GAL



MINIMUM 90 MILS OF POLYGUARD DETAIL SEALANT PW APPLIED TO THE TERMINAL EDGE OF TERMINATION STRIP COVERING FASTENERS AND EXTENDING 1/2" ABOVE AND BELOW TERMINATION STRIP

CLEAN DRY FROST FREE CONCRETE - BY OTHERS

MINIMUM 90 MILS OF POLYGUARD DETAIL SEALANT PW APPLIED TO VERTICAL EDGE OF POLYGUARD 650, 650 PRM OR 650 WRM MEMBRANE

POLYGUARD MEMBRANE: 650, 650 PRM OR 650 WRM APPLIED TO CLEAN, DRY AND FROST FREE SUBSTRATE PREPARED WITH POLYGUARD 650 LT LIQUID ADHESIVE OR POLYGUARD CALIFORNIA SEALANT AT A RATE OF 250 - 300 SF/GAL OR POLYGUARD 650 WB LIQUID ADHESIVE AT A RATE OF 350 - 400 SF/GAL - POLYGUARD 650 WB LIQUID ADHESIVE CAN ONLY BE USED ON THE POLYGUARD MEMBRANE: 650, 650 PRM OR 650 WRM WALL NOT POLYGUARD BLINDSIDE WALL

**BS14**

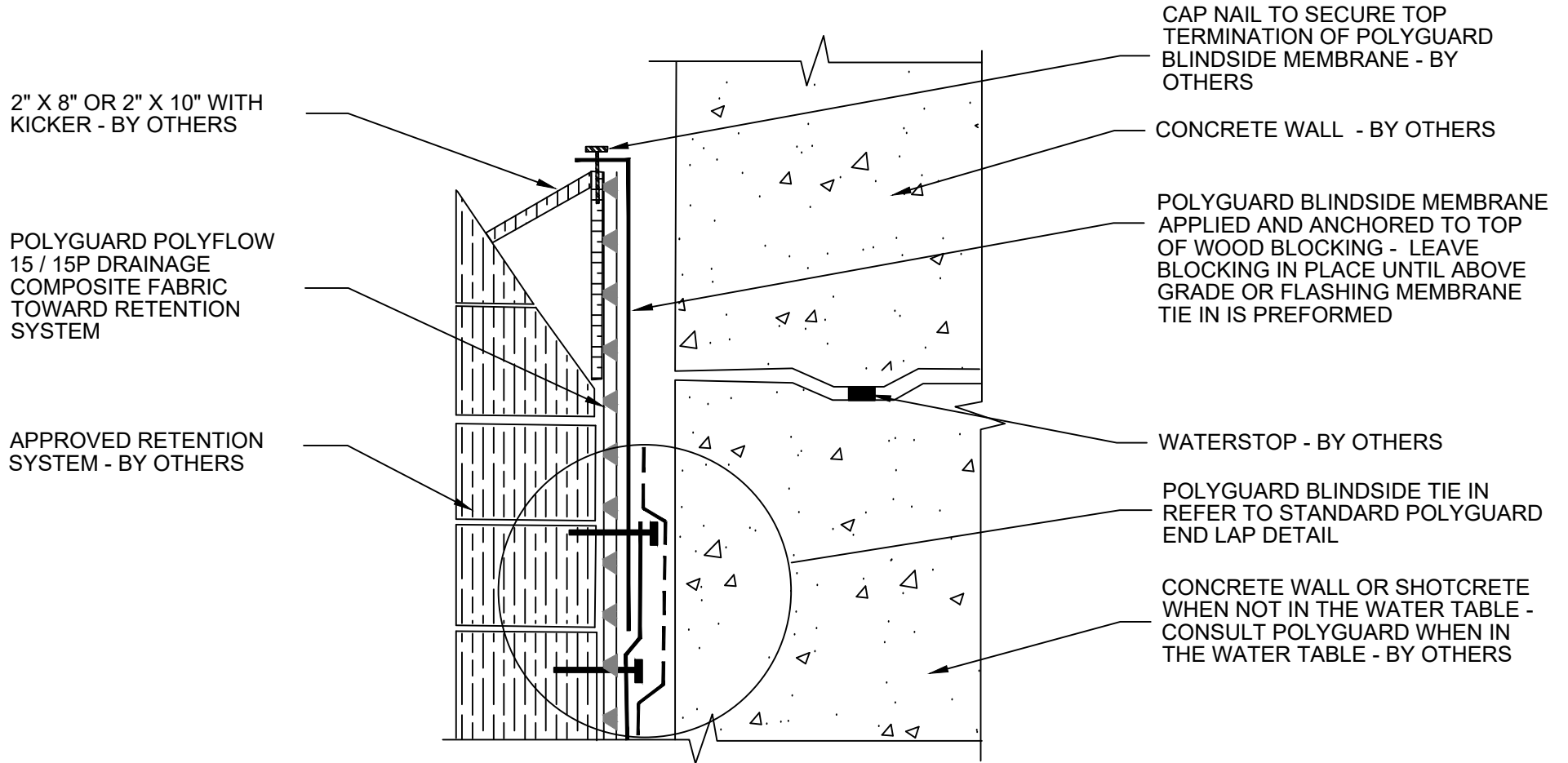
**SECTION @ BLINDSIDE TIE IN TO 650 / 650 PRM / 650 WRM AT OUTSIDE CORNER**

©POLYGUARD PRODUCTS, INC.  
MATERIAL SEPARATED FOR CLARITY

Polyguard Products, Inc.  
P.O. Box 755 - Ennis, TX 75120  
Phone: 214-515-5000  
Web Site - www.polyguard.com

<small>The information provided is based on data and knowledge considered to be true and accurate and is offered for the users' consideration, investigation and verification, but we do not warrant the results to be obtained. Please read all data sheets, statements, recommendations or suggestions in conjunction with our conditions of sale, which apply to all goods supplied by us.</small>	NOT TO SCALE
	EFFECTIVE DATE: 12/16/2024
	SUPERCEDES: 07/15/2024

**NOTE: CRITICAL DETAIL - WARRANTY INVOLVED**



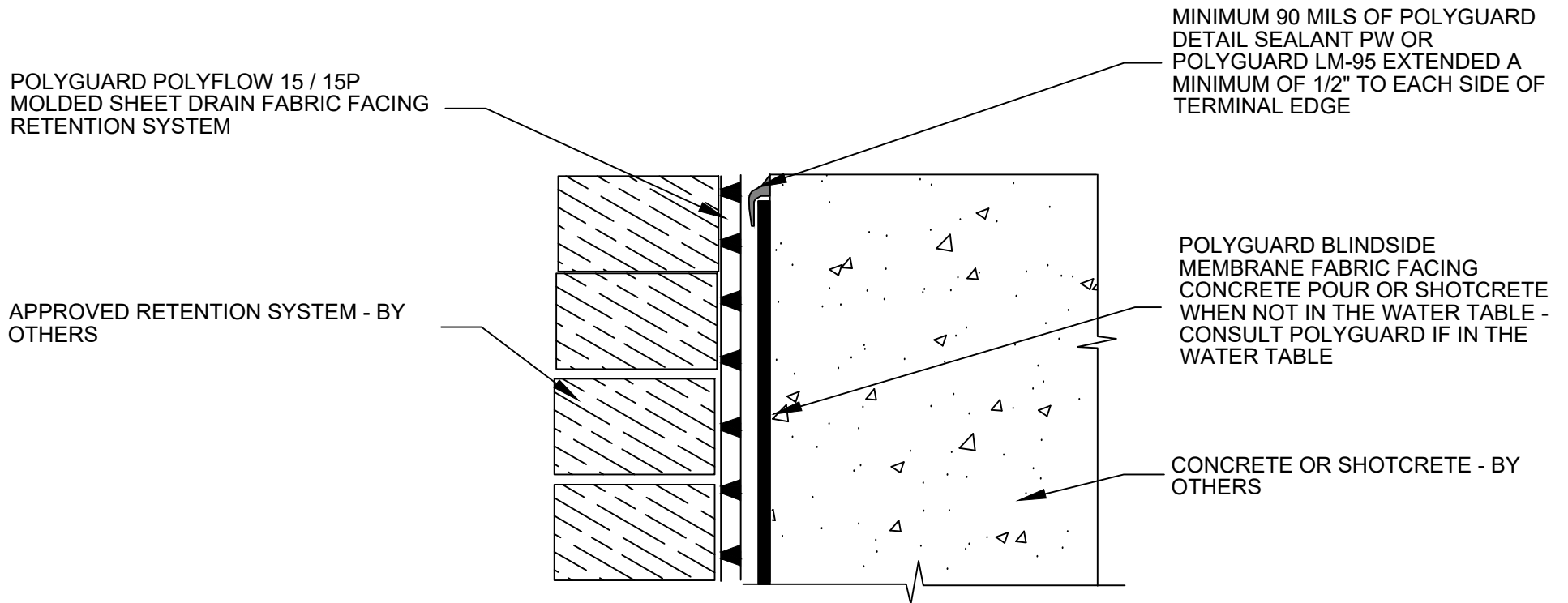
**BS15**

**SECTION @ TOP OF WALL TERMINATION MECHANICALLY FASTENED**

Polyguard Products, Inc.  
P.O. Box 755 - Ennis, TX 75120  
Phone: 214-515-5000  
Web Site - [www.polyguard.com](http://www.polyguard.com)

©POLYGUARD PRODUCTS, INC.  
MATERIAL SEPARATED FOR CLARITY

<small>The information provided is based on data and knowledge considered to be true and accurate and is offered for the users' consideration, investigation and verification, but we do not warrant the results to be obtained. Please read all data sheets, statements, recommendations or suggestions in conjunction with our conditions of sale, which apply to all goods supplied by us.</small>	NOT TO SCALE
	EFFECTIVE DATE: 12/16/2024
	SUPERCEDES: 07/15/2024



**BS16**

**SECTION @ TOP OF WALL EMBEDDED TERMINATION**

Polyguard Products, Inc.  
P.O. Box 755 - Ennis, TX 75120  
Phone: 214-515-5000  
Web Site - [www.polyguard.com](http://www.polyguard.com)

©POLYGUARD PRODUCTS, INC.  
MATERIAL SEPARATED FOR CLARITY

<small>The information provided is based on data and knowledge considered to be true and accurate and is offered for the users' consideration, investigation and verification, but we do not warrant the results to be obtained. Please read all data sheets, statements, recommendations or suggestions in conjunction with our conditions of sale, which apply to all goods supplied by us.</small>	NOT TO SCALE
	EFFECTIVE DATE: 12/16/2024
	SUPERCEDES: 07/15/2024