

POLYGUARD POLYFLOW 15 SHEET
MOLDED DRAIN FABRIC FACING
RETENTION SYSTEM

SPRAY A 12" WIDE AREA OF LOW
RISE ADHESIVE - BY OTHERS
ONTO DRAINBOARD AND ONTO
POLYGUARD CR SEAM TAPE
ALLOW TO FLASH OFF AND PRESS
FILM SIDE OF POLYGUARD CRM
MEMBRANE AND POLYGUARD CR
SEAM TAPE INTO ADHESIVE ON
POLYGUARD POLYFLOW 15

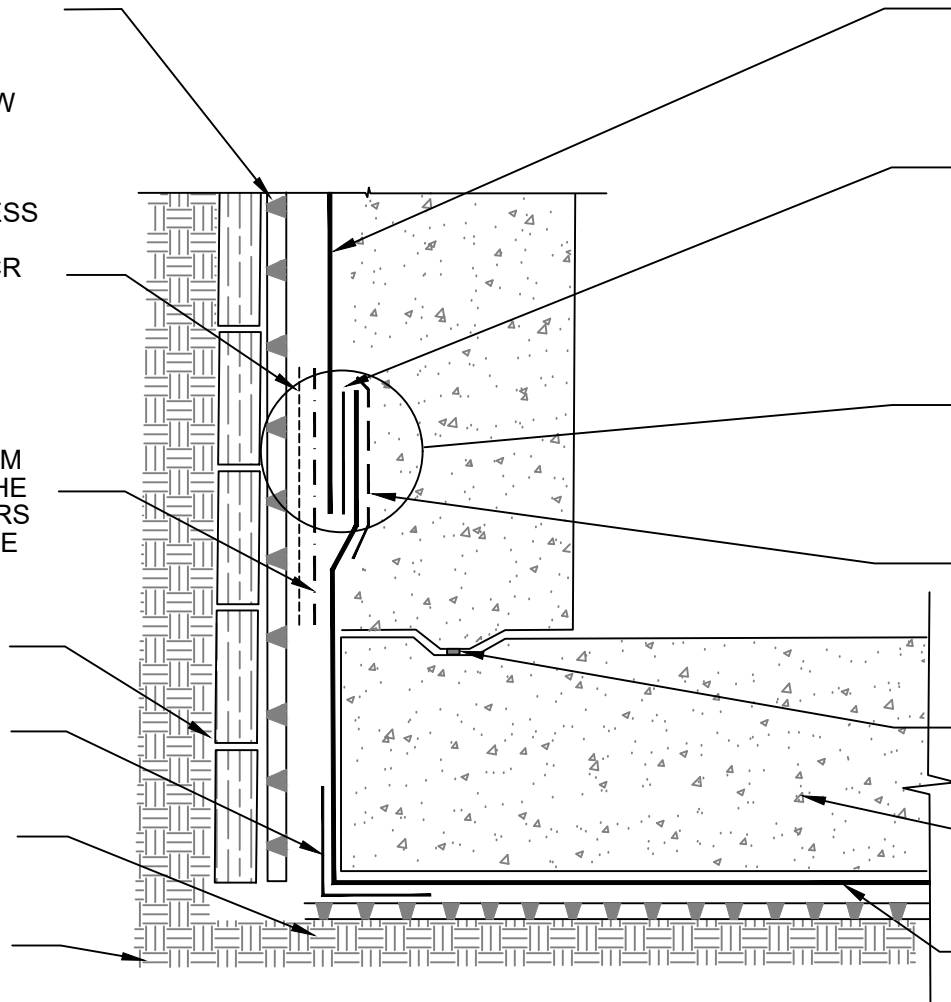
POLYGUARD CR SEAM TAPE
APPLIED TO FILM SIDE OF ALL
SEAMS OF THE POLYGUARD CRM
MEMBRANE AND PRESS INTO THE
LOW RISE ADHESIVE - BY OTHERS
THAT HAS BEEN APPLIED TO THE
DRAINBOARD

RETENTION SYSTEM - BY
OTHERS TIMBER LAGGING
SHOWN

POLYGUARD CR INSIDE AND
OUTSIDE CORNER BOOTS
WERE APPLICABLE

POLYGUARD POLYFLOW 18
MOLDED SHEET DRAINAGE
FABRIC TOWARD SUBSTRATE

APPROVED SUBSTRATE -
BY OTHERS



POLYGUARD CRM MEMBRANE
FABRIC TOWARD CONCRETE POUR

MINIMUM 90 MILS OF POLYGUARD
CR LIQUID MEMBRANE APPLIED TO
POLYGUARD CRM MEMBRANE A
MAXIMUM 4" - PREPARE FABRIC
WITH POLYGUARD CR SEALANT AT
A RATE OF 50 - 75 SF/GAL

VERTICAL ENDLAP CENTER OF
LIFT DETAIL - REFERENCE
POLYGUARD END LAP DETAIL

12" STRIP OF POLYGUARD FABRIC
APPLIED TO CLEAN DRY
POLYGUARD CRM MEMBRANE
PREPARED WITH POLYGUARD CR
SEALANT AT A RATE OF 50 - 75
SF/GAL

WATERSTOP - BY OTHERS

EXISTING CONCRETE -
BY OTHERS

POLYGUARD CRM MEMBRANE
FABRIC TOWARD CONCRETE POUR
AND OVERLAPPING VERTICAL
POLYGUARD CRM MEMBRANE - 3"
MINIMUM 4" MAXIMUM

CRH1

SECTION @ HORIZONTAL TO VERTICAL TIE IN

POLYGUARD FABRIC TAPE A MINIMUM 6" IN ALL DIRECTIONS PAST END LAP APPLIED TO CLEAN, DRY POLYGUARD CRM MEMBRANE PREPARED WITH POLYGUARD CR SEALANT AT A RATE OF 50 - 75 SF/GAL

WET SET POLYGUARD CRM MEMBRANE END LAP INTO POLYGUARD CR LIQUID MEMBRANE

POLYGUARD CR SEAM TAPE APPLIED TO FILM SIDE OF EXISTING PIECE OF POLYGUARD CRM MEMBRANE A MINIMUM OF 6" - LEAVE FILM ON UNTIL TIME FOR CONNECTION - REMOVE FILM AND LAY NEW PIECE ONTO POLYGUARD CR SEAM TAPE

4" SELVEDGE EDGE

3" MINIMUM 4" MAXIMUM END LAP

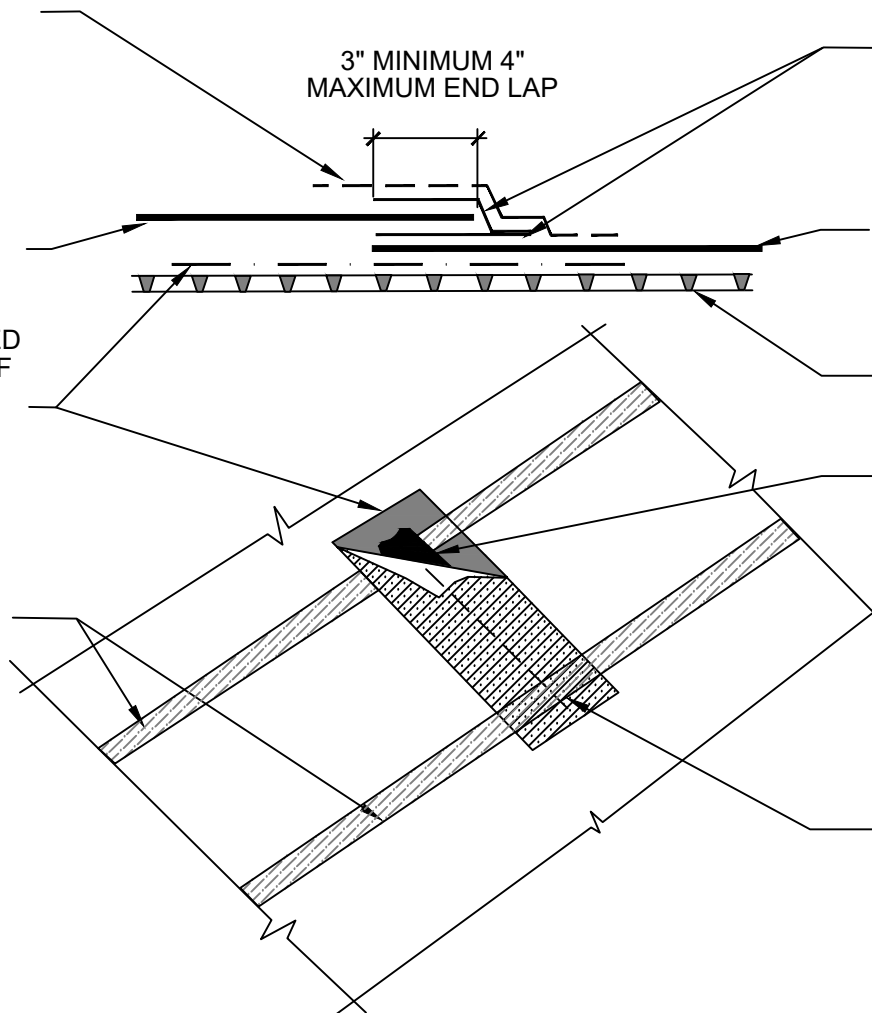
90 MILS OF POLYGUARD CR LIQUID MEMBRANE APPLIED EVENLY TO FABRIC SIDE OF POLYGUARD CRM MEMBRANE PREPARED WITH POLYGUARD CR SEALANT AT A RATE OF 50 - 75 SF/GAL

POLYGUARD CRM MEMBRANE APPLIED 6" ONTO POLYGUARD CR SEAM TAPE

POLYGUARD POLYFLOW 18 MOLDED SHEET DRAINAGE FABRIC TOWARD SUBSTRATE

POLYGUARD CR LIQUID MEMBRANE ENCAPSULATING THE EDGE OF THE POLYGUARD CRM MEMBRANE

POLYGUARD CRM MEMBRANE END LAP



CRH2

ISOMETRIC @ END LAP

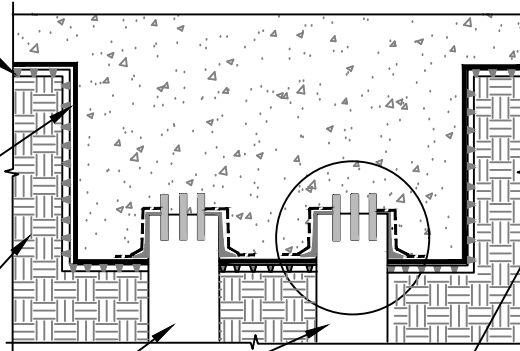
<small>The information provided is based on data and knowledge considered to be true and accurate and is offered for the users' consideration, investigation and verification, but we do not warrant the results to be obtained. Please read all data sheets, statements, recommendations or suggestions in conjunction with our conditions of sale, which apply to all goods supplied by us.</small>	NOT TO SCALE
	EFFECTIVE DATE: 07/15/2024
	SUPERCEDES: 10/01/2022

POLYGUARD POLYFLOW 18
MOLDED SHEET DRAINAGE
FABRIC TOWARD SUBSTRATE

POLYGUARD CRM MEMBRANE
FABRIC TOWARD CONCRETE
POUR

APPROVED SUBSTRATE -
BY OTHERS

EXISTING CONCRETE PILES -
BY OTHERS



POLYGUARD FABRIC TAPE APPLIED OVER
CURED POLYGUARD CR LIQUID MEMBRANE
PREPARED WITH POLYGUARD CR SEALANT
APPLIED AT A RATE OF 175 - 200 SF/GAL AND
ONTO CLEAN, DRY FABRIC OF POLYGUARD
CRM MEMBRANE PREPARED WITH
POLYGUARD CR SEALANT AT A RATE OF 50 - 75
SF/GAL

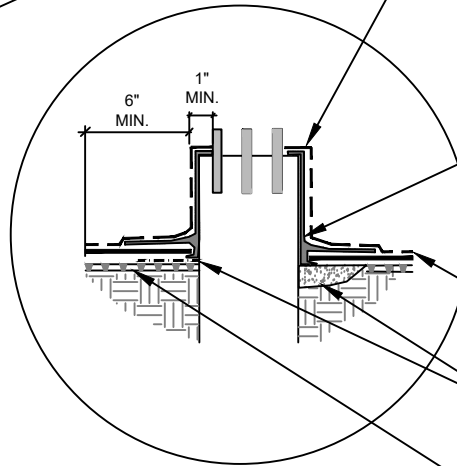
MINIMUM 90 MILS OF POLYGUARD CR LIQUID
MEMBRANE APPLIED TO SUBSTRATE
PREPARED WITH POLYGUARD CR SEALANT AT
A RATE OF 175 - 200 SF/GAL TO CLEAN, DRY
AND FROST FREE CONCRETE WITH 3/4"
MINIMUM CANT AROUND BASE OF PILE
INTERSECTION WITH POLYGUARD CRM
MEMBRANE FABRIC ENCAPSULATING
POLYGUARD CRM MEMBRANE EDGE -
PREPARE FABRIC WITH POLYGUARD CR
SEALANT AT A RATE OF 50 - 75 SF/GAL

POLYGUARD CRM MEMBRANE FIT TIGHTLY
AROUND PERIMETER OF PILE WITH FABRIC
TOWARD CONCRETE POUR

CONCRETE WELL - BY OTHERS OR
POLYGUARD CR SEAM TAPE MINIMUM 4"
RADIUS AROUND THE PENETRATION

POLYGUARD POLYFLOW 18 MOLDED SHEET
DRAINAGE FABRIC TOWARD SUBSTRATE

NOTE: WHERE THE TOP OF THE PILE
CANNOT BE USED AS A
TERMINATION AREA, INSTALL A 1"
WIDE STAINLESS STEEL BAND
CLAMP - BY OTHERS ALIGNED
ALONG THE TOP EDGE OF THE
POLYGUARD FABRIC TAPE - SEAL
TERMINATION WITH POLYGUARD
CR SEALANT AND POLYGUARD
CR LIQUID MEMBRANE



CRH3

SECTION @ PILE TERMINATION - PROFILE 1

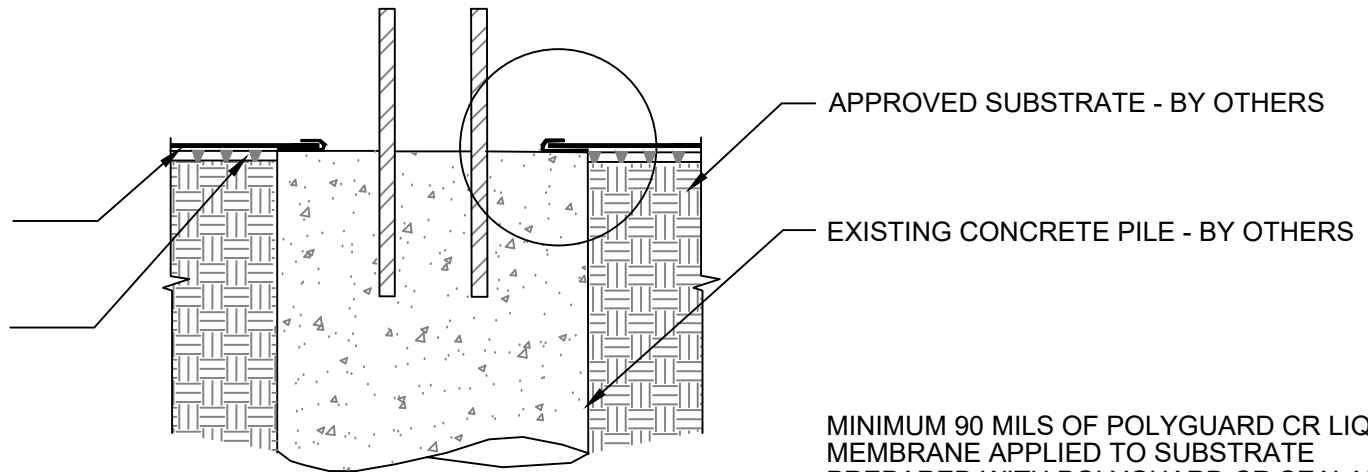
©POLYGUARD PRODUCTS, INC.
MATERIAL SEPARATED FOR CLARITY

Polyguard Products, Inc.
P.O. Box 755 - Ennis, TX 75120
Phone: 214-515-5000
Web Site - www.polyguard.com

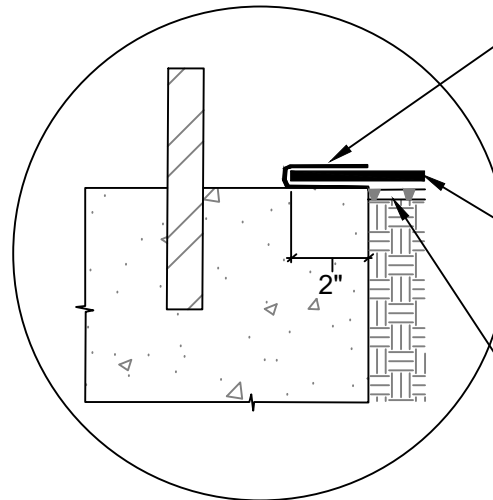
<small>The information provided is based on data and knowledge considered to be true and accurate and is offered for the users' consideration, investigation and verification, but we do not warrant the results to be obtained. Please read all data sheets, statements, recommendations or suggestions in conjunction with our conditions of sale, which apply to all goods supplied by us.</small>	NOT TO SCALE
	EFFECTIVE DATE: 07/15/2024
	SUPERCEDES: 10/01/2022

POLYGUARD CRM MEMBRANE
FABRIC TOWARD CONCRETE
POUR

POLYGUARD POLYFLOW 18
MOLDED SHEET DRAINAGE
FABRIC TOWARD SUBSTRATE



MINIMUM 90 MILS OF POLYGUARD CR LIQUID
MEMBRANE APPLIED TO SUBSTRATE
PREPARED WITH POLYGUARD CR SEALANT
AT A RATE OF 175 - 200 SF/GAL TO CLEAN
DRY AND FROST FREE CONCRETE AND
ENCAPSULATING THE EDGE AND ONTO A
MINIMUM OF 2" OF THE FABRIC OF THE
CLEAN, DRY POLYGUARD CRM MEMBRANE
PREPARE FABRIC WITH POLYGUARD CR
SEALANT AT A RATE OF 50 - 75 SF/GAL



POLYGUARD CRM MEMBRANE APPLIED
FABRIC TOWARD CONCRETE POUR WITH END
ONTO A MINIMUM OF 2" OF CONCRETE AND
WET POLYGUARD CR LIQUID MEMBRANE

POLYGUARD POLYFLOW 18 MOLDED SHEET
DRAINAGE FABRIC TOWARD SUBSTRATE

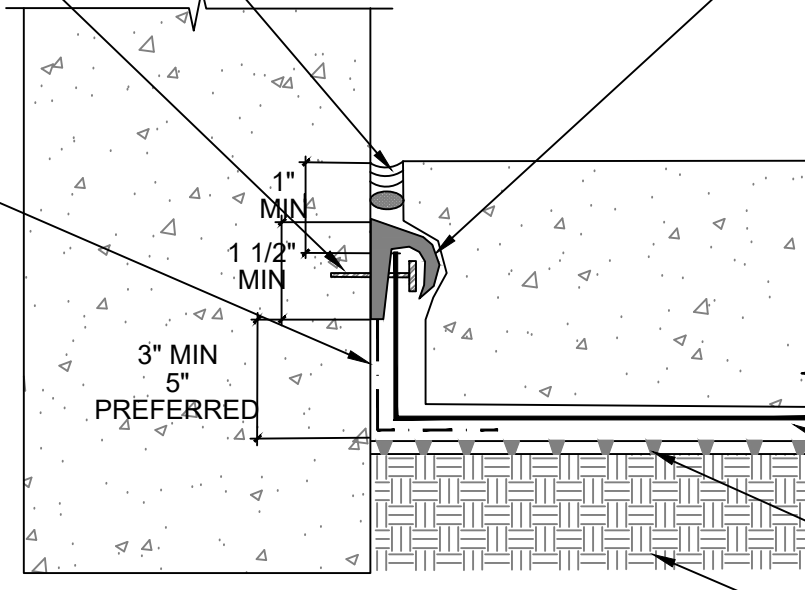
CRH4 SECTION @ PILE TERMINATION - PROFILE 2

<small>The information provided is based on data and knowledge considered to be true and accurate and is offered for the users' consideration, investigation and verification, but we do not warrant the results to be obtained. Please read all data sheets, statements, recommendations or suggestions in conjunction with our conditions of sale, which apply to all goods supplied by us.</small>	NOT TO SCALE
	EFFECTIVE DATE: 07/15/2024
	SUPERCEDES: 10/01/2022

BACKER ROD AND
SEALANT - BY
OTHERS

TERMINATION BAR
AND FASTENERS - BY
OTHERS

STRIP OF POLYGUARD CR
SEAM TAPE APPLIED OVER
POLYGUARD 650 LT LIQUID
ADHESIVE OR POLYGUARD
CALIFORNIA SEALANT AT A
RATE OF 250-300 SF/GAL -
APPLY WITH ADHESIVE
SIDE FACING OUT FOR
ADHESION OF POLYGUARD
CRM MEMBRANE - LOW
RISE ADHESIVE - BY
OTHERS CAN BE
SUBSTITUTED FOR
ADHESIVE/ SEALANT ON
THE FILM SIDE



MINIMUM 90 MILS OF POLYGUARD CR
LIQUID MEMBRANE APPLIED TO
SUBSTRATE PREPARED WITH
POLYGUARD CR SEALANT AT A RATE
OF 175 - 200 SF/GAL TO CLEAN, DRY,
AND FROST FREE CONCRETE
MINIMUM OF 1 1/2" OVER TOP OF
TERMINATION BAR AND FASTENERS -
BY OTHERS AND ONTO POLYGUARD
CRM MEMBRANE A MINIMUM OF 1" -
PREPARE FABRIC OF POLYGUARD
CRM MEMBRANE WITH POLYGUARD
CR SEALANT AT A RATE OF 175 - 200
SF/GAL

CONCRETE POUR - BY OTHERS

POLYGUARD CRM MEMBRANE WITH
FABRIC TOWARD CONCRETE POUR

POLYGUARD POLYFLOW 18 MOLDED
SHEET DRAINAGE FABRIC TOWARD
SUBSTRATE

APPROVED SUBSTRATE - BY
OTHERS

CRH5

SECTION @ TERMINATION TO EXISTING CONCRETE WALL

Polyguard Products, Inc.
P.O. Box 755 - Ennis, TX 75120
Phone: 214-515-5000
Web Site - www.polyguard.com

©POLYGUARD PRODUCTS, INC.
MATERIAL SEPARATED FOR CLARITY

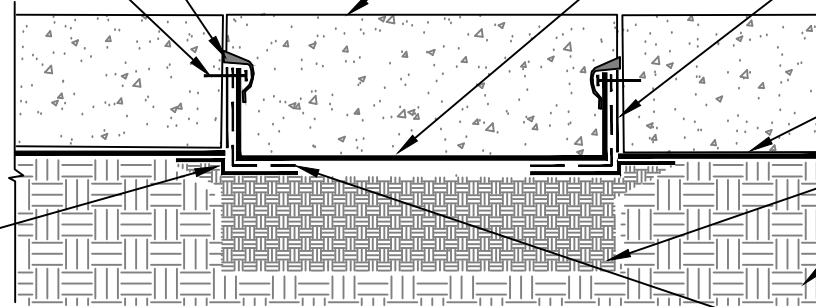
The information provided is based on data and knowledge considered to be true and accurate and is offered for the users' consideration, investigation and verification, but we do not warrant the results to be obtained. Please read all data sheets, statements, recommendations or suggestions in conjunction with our conditions of sale, which apply to all goods supplied by us.	NOT TO SCALE
	EFFECTIVE DATE: 07/15/2024
	SUPERCEDES: 10/01/2022

MINIMUM 90 MILS OF POLYGUARD CR LIQUID MEMBRANE APPLIED TO TOP TERMINATION - REFERENCE POLYGUARD CRM MEMBRANE TERMINATION AT EXISTING CONCRETE WALL DETAIL

TERMINATION BAR AND FASTENERS - BY OTHERS

DIG OUT AND EXPOSE POLYGUARD CRM MEMBRANE THE ENTIRE PERIMETER OF THE TRENCH A MINIMUM OF 2" PAST SAW CUTS - APPLY A 12" PIECE OF POLYGUARD CR SEAM TAPE TO CLEANED FILM SIDE OF POLYGUARD CRM MEMBRANE - LEAVING FILM ON EXPOSED SIDE OF MEMBRANE - ANCHOR TO SIDE OF TRENCH TO PROTECT MEMBRANE FROM BACKFILLING DAMAGE. ONCE BACKFILLED THEN LAY TAPED PIECE TO BOTTOM OF TRENCH AND REMOVE FILM FOR ADHESION OF POLYGUARD CR BOOT AND POLYGUARD CRM MEMBRANE

NOTE: AFTER CONCRETE IS REPLACED, SEAL CROSS SAW CUTS WITH INJECTABLE MATERIAL - BY OTHERS



REPLACEMENT CONCRETE - BY OTHERS

NEW PIECE OF POLYGUARD CRM MEMBRANE WITH FABRIC FACING CONCRETE POUR ADHERE FILM SIDE OF POLYGUARD CRM MEMBRANE TO CR SEAM TAPE

APPLY A MINIMUM 90 MILS OF POLYGUARD CR LIQUID MEMBRANE TO SUBSTRATE PREPARED WITH POLYGUARD CR SEALANT AT A RATE OF 175 - 200 SF/GAL

EXISTING POLYGUARD CRM MEMBRANE

APPROVED SUBSTRATES - BY OTHERS

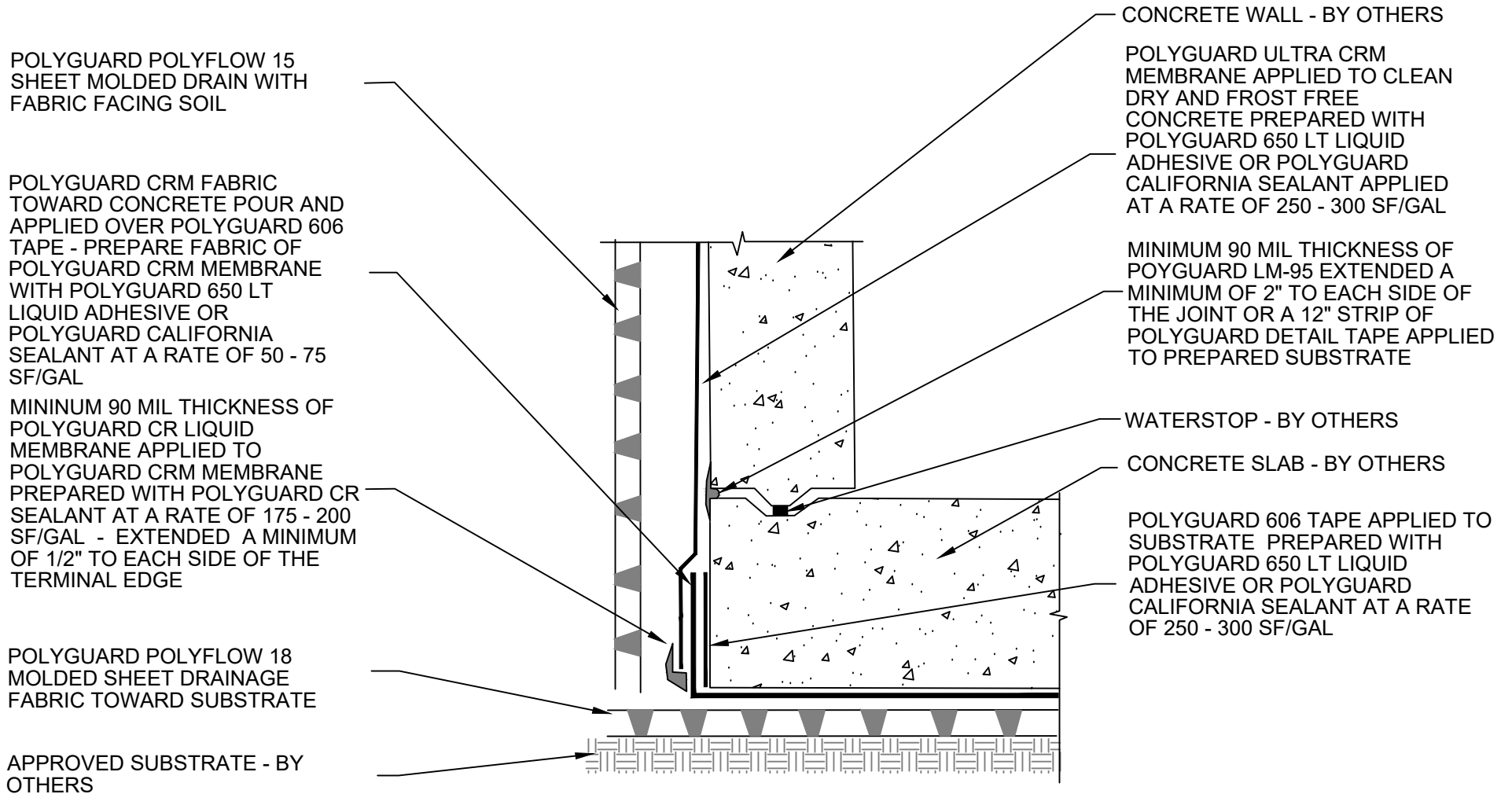
PLACE POLYGUARD CR OUTSIDE CORNER BOOT ONTO TACK SIDE OF POLYGUARD CR TAPE AND INTO CORNER - TO FIELD MAKE INSIDE CORNERS REFERENCE POLYGUARD PREFORMED CORNER BOOT DETAIL

CRH6 SECTION @ SAW CUT THROUGH EXISTING SLAB

Polyguard Products, Inc.
P.O. Box 755 - Ennis, TX 75120
Phone: 214-515-5000
Web Site - www.polyguard.com

©POLYGUARD PRODUCTS, INC.
MATERIAL SEPARATED FOR CLARITY

<small>The information provided is based on data and knowledge considered to be true and accurate and is offered for the users' consideration, investigation and verification, but we do not warrant the results to be obtained. Please read all data sheets, statements, recommendations or suggestions in conjunction with our conditions of sale, which apply to all goods supplied by us.</small>	NOT TO SCALE
	EFFECTIVE DATE: 07/15/2024
	SUPERCEDES: 10/01/2022



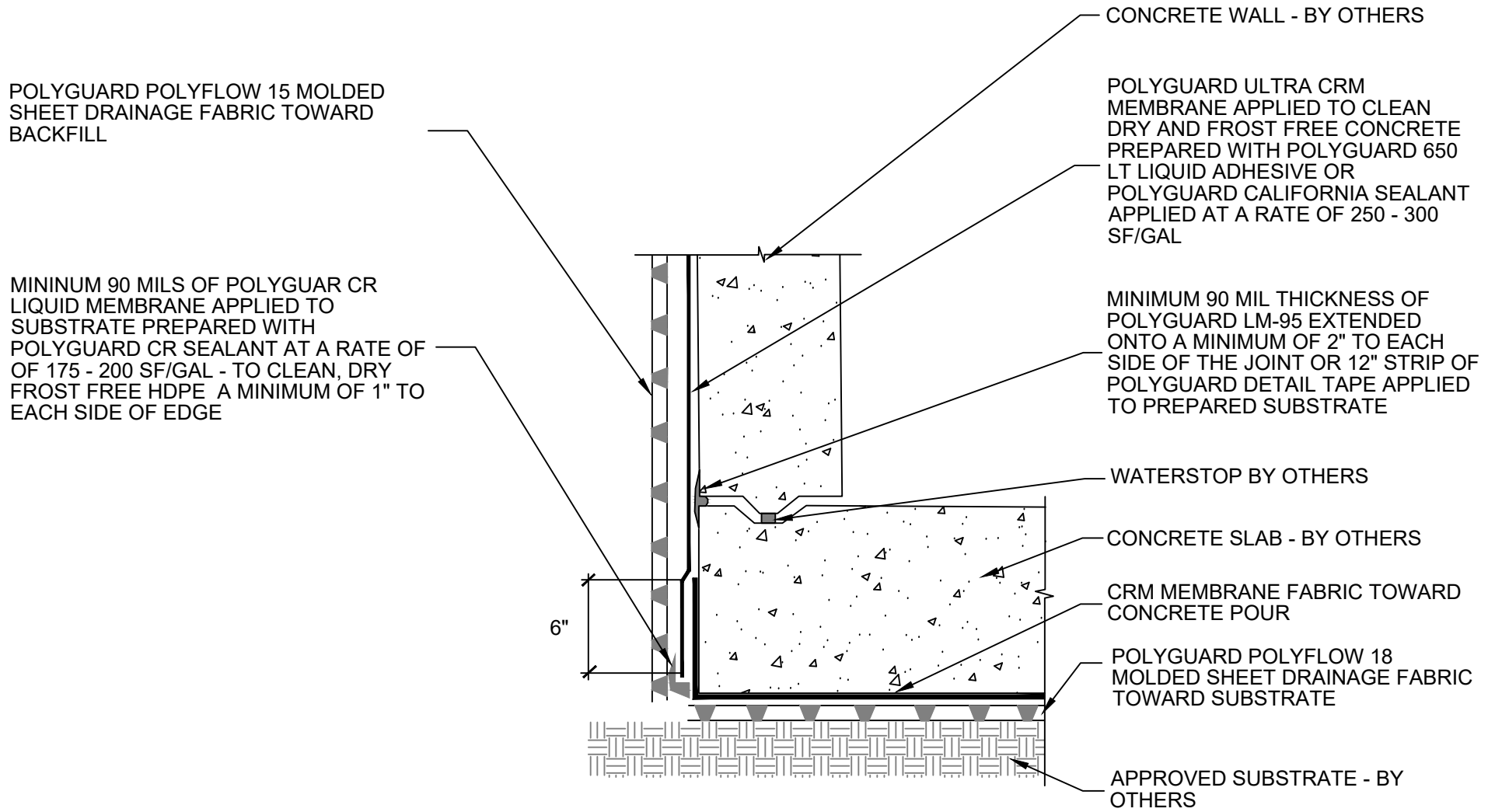
CRH7

SECTION @ ULTRA CRM TIE IN TO POST TERMINATED CRM MEMBRANE - PROFILE 1

Polyguard Products, Inc.
P.O. Box 755 - Ennis, TX 75120
Phone: 214-515-5000
Web Site - www.polyguard.com

©POLYGUARD PRODUCTS, INC.
MATERIAL SEPARATED FOR CLARITY

<small>The information provided is based on data and knowledge considered to be true and accurate and is offered for the users' consideration, investigation and verification, but we do not warrant the results to be obtained. Please read all data sheets, statements, recommendations or suggestions in conjunction with our conditions of sale, which apply to all goods supplied by us.</small>	NOT TO SCALE
	EFFECTIVE DATE: 07/15/2024
	SUPERCEDES: 10/01/2022



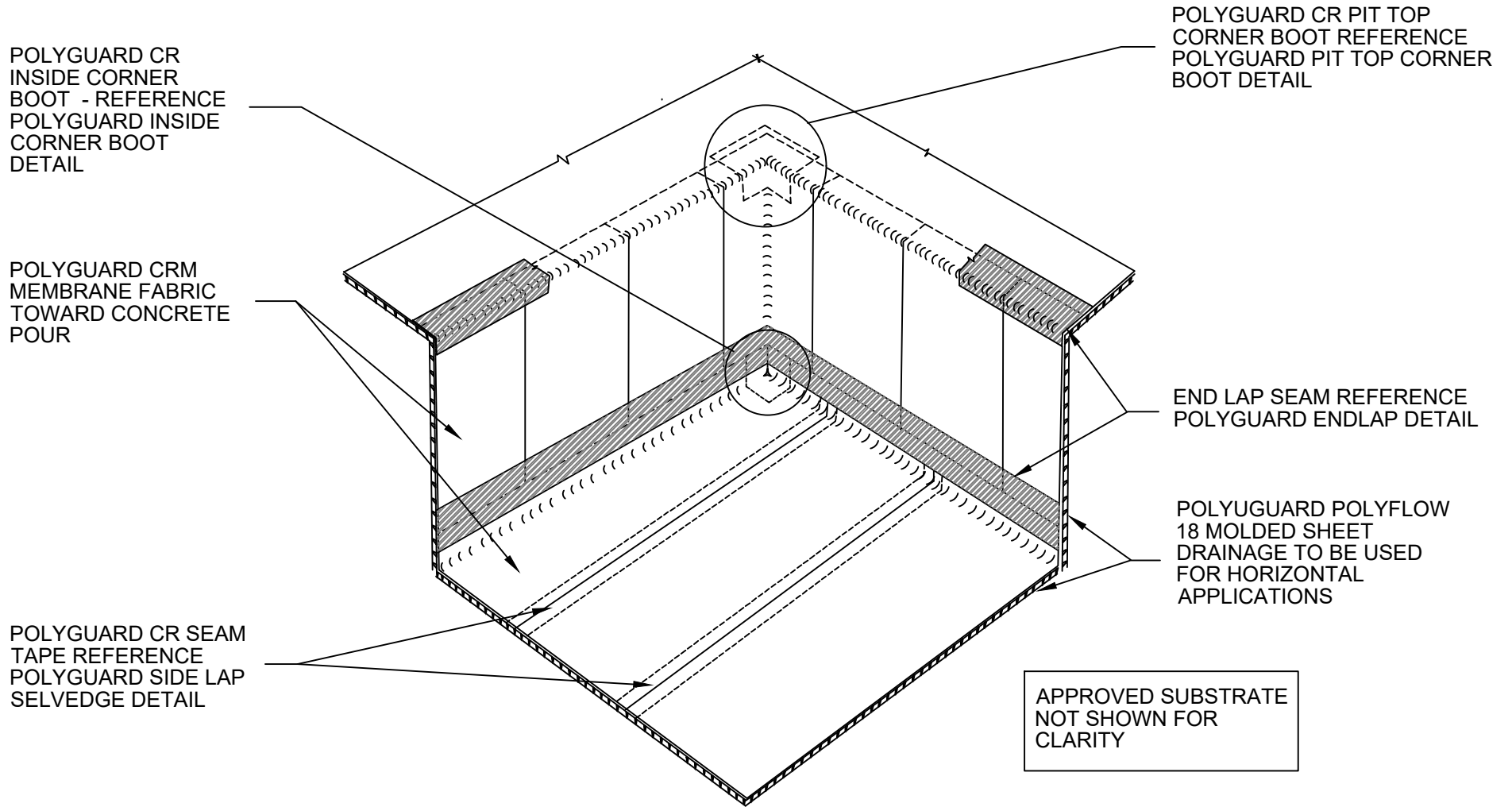
CRH8

SECTION @ ULTRA CRM TIE IN TO EMBEDDED CRM MEMBRANE - PROFILE 2

Polyguard Products, Inc.
P.O. Box 755 - Ennis, TX 75120
Phone: 214-515-5000
Web Site - www.polyguard.com

©POLYGUARD PRODUCTS, INC.
MATERIAL SEPARATED FOR CLARITY

<small>The information provided is based on data and knowledge considered to be true and accurate and is offered for the users' consideration, investigation and verification, but we do not warrant the results to be obtained. Please read all data sheets, statements, recommendations or suggestions in conjunction with our conditions of sale, which apply to all goods supplied by us.</small>	NOT TO SCALE
	EFFECTIVE DATE: 07/15/2024
	SUPERCEDES: 10/01/2022

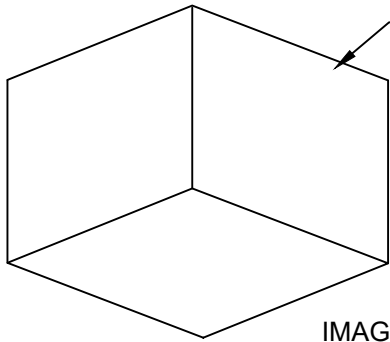


CRH9 ISOMETRIC OVERVIEW @ SUMP / ELEVATOR PIT

Polyguard Products, Inc.
P.O. Box 755 - Ennis, TX 75120
Phone: 214-515-5000
Web Site - www.polyguard.com

©POLYGUARD PRODUCTS, INC.
MATERIAL SEPARATED FOR CLARITY

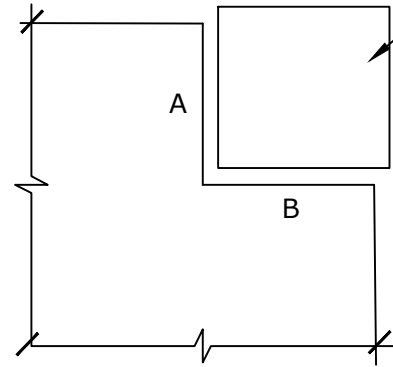
<small>The information provided is based on data and knowledge considered to be true and accurate and is offered for the users' consideration, investigation and verification, but we do not warrant the results to be obtained. Please read all data sheets, statements, recommendations or suggestions in conjunction with our conditions of sale, which apply to all goods supplied by us.</small>	NOT TO SCALE
	EFFECTIVE DATE: 07/15/2024
	SUPERCEDES: 10/01/2022



PLACE A POLYGUARD CR INSIDE CORNER BOOT INTO THE CORNER WITH CHEMICAL RESISTANT BACKING FACING THE CONCRETE FORM, OR WALL

POSITION THE BOOT IN THE CORNER WITH THE FACTORY SEAM RUNNING ALONG THE HORIZONTAL PLANE

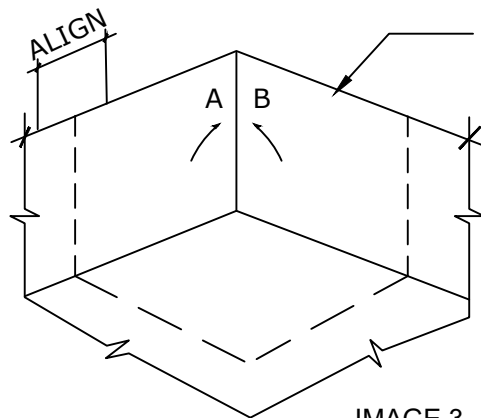
IMAGE 1



CUT AND REMOVE A SQUARE PIECE OF POLYGUARD CRM MEMBRANE FROM THE END CORNER.

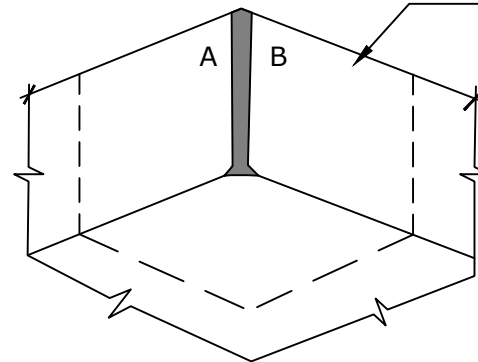
DIMENSION THE STARTING POINT OF EACH CUT FROM THE CORNER, AND ALONG AN EDGE, A DISTANCE EQUAL TO THE HEIGHT OF THE VERTICAL LEG OF THE BOOT. CUT INWARD FROM THE EDGE TO THIS DISTANCE AND DISCARD THE OFF FALL

IMAGE 2



POSITION THE CUT UNDERSEAL CRM INTO THE CORNER AND OVER THE BOOT SO THE A AND B EDGES MEET IN THE VERTICAL LEG OF THE BOOT. FORM-FIT THE PIECE TO THE CONTOURS OF THE CORNER. CREASE THE UNDERSEAL CRM MATERIAL TO ESTABLISH A CONFORMING SHAPE. AFTER CREASING, FOLD THE PIECE BACK, REMOVE THE RELEASE PAPER FROM THE HORIZONTAL LEG OF THE BOOT, THEN OVERLAY AND PRESS THE HORIZONTAL LEG INTO THE BOOT. REPEAT FOR EACH VERTICAL LEG.

IMAGE 3



PREPARE THE FABRIC ALONG THE (A) AND (B) EDGES WITH POLYGUARD CR SEALANT APPLIED AT A RATE OF 50 - 75 SF/GAL SEAL THE (A) AND (B) EDGES AND BOTTOM CORNER USING A MINIMUM 90 MIL THICKNESS BY 3/4" WIDE APPLICATION OF POLYGUARD CR LIQUID MEMBRANE TROWELED ONTO EACH LEG AND JOINED AT THE INTERSECTING PLANES.

IMAGE 4

CRH10 SECTION @ CR INSIDE CORNER BOOT DETAIL

The information provided is based on data and knowledge considered to be true and accurate and is offered for the users' consideration, investigation and verification, but we do not warrant the results to be obtained. Please read all data sheets, statements, recommendations or suggestions in conjunction with our conditions of sale, which apply to all goods supplied by us.	NOT TO SCALE
	EFFECTIVE DATE: 07/15/2024
	SUPERCEDES: 10/01/2022

4" FACTORY SELVEDGE WITH PROTECTIVE RELEASE FILM COVERING

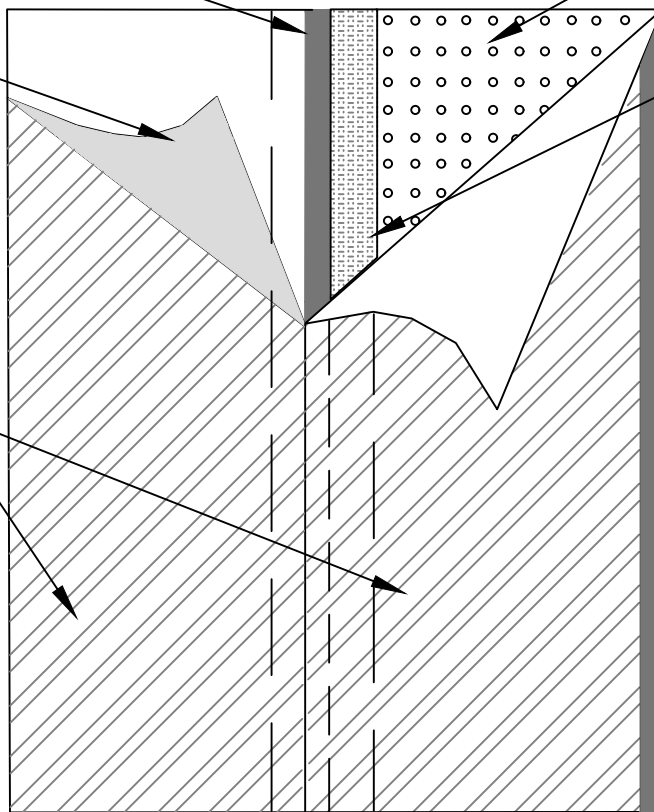
PROTECTIVE PACKAGING FILM REMOVED DURING INSTALLATION

POLYGUARD CRM MEMBRANE FABRIC TOWARD CONCRETE POUR

POLYGUARD POLYFLOW 18 MOLDED SHEET DRAINAGE FOR HORIZONTAL APPLICATIONS

POLYGUARD CR SEAM TAPE CENTERED ON FILM SIDE OF SEAM

4" FACTORY SELVEDGE WITH PROTECTIVE RELEASE FILM COVERING



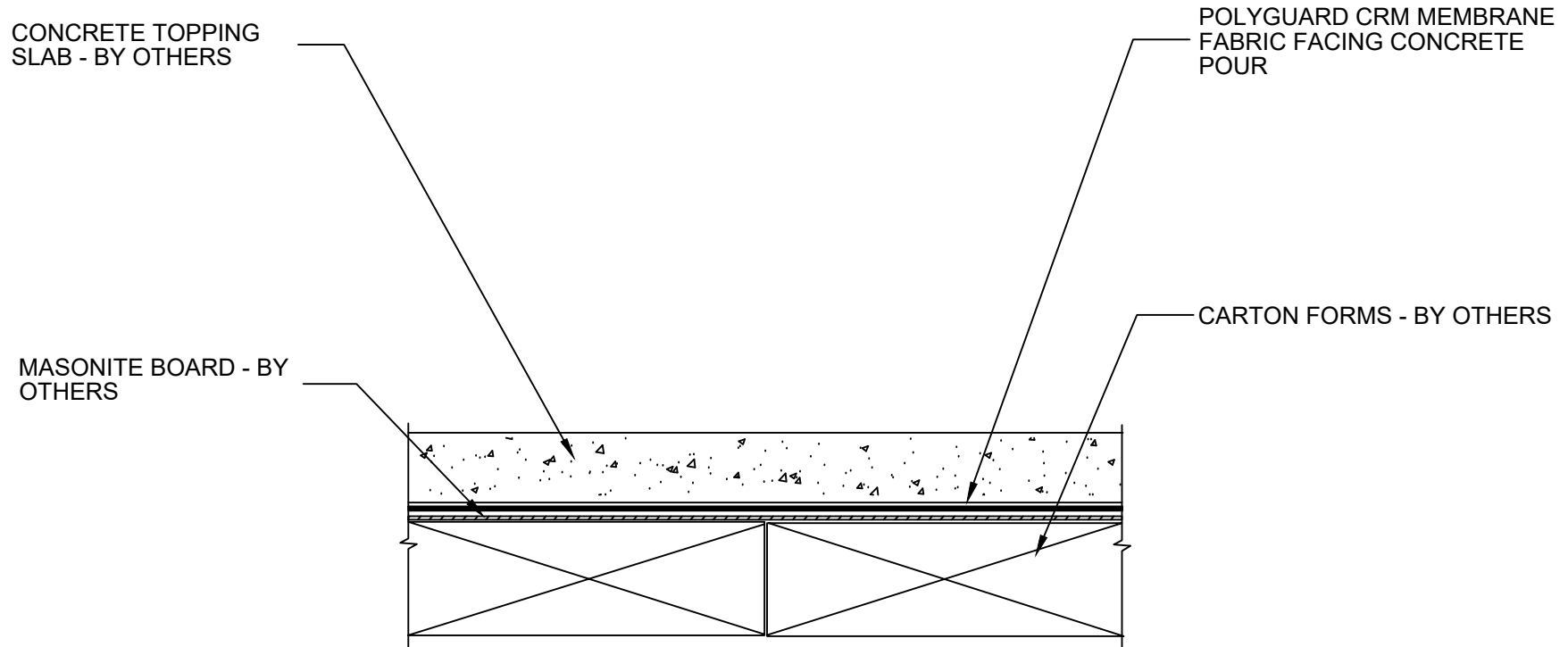
CRH11

OVERVIEW @ CRM MEMBRANE SIDE LAPS - SELVEDGE

Polyguard Products, Inc.
P.O. Box 755 - Ennis, TX 75120
Phone: 214-515-5000
Web Site - www.polyguard.com

©POLYGUARD PRODUCTS, INC.
MATERIAL SEPARATED FOR CLARITY

<small>The information provided is based on data and knowledge considered to be true and accurate and is offered for the users' consideration, investigation and verification, but we do not warrant the results to be obtained. Please read all data sheets, statements, recommendations or suggestions in conjunction with our conditions of sale, which apply to all goods supplied by us.</small>	NOT TO SCALE
	EFFECTIVE DATE: 07/15/2024
	SUPERCEDES: 10/01/2022



CRH12 OVERVIEW @ CARTON FORMS DETAIL

Polyguard Products, Inc.
P.O. Box 755 - Ennis, TX 75120
Phone: 214-515-5000
Web Site - www.polyguard.com

©POLYGUARD PRODUCTS, INC.
MATERIAL SEPARATED FOR CLARITY

<small>The information provided is based on data and knowledge considered to be true and accurate and is offered for the users' consideration, investigation and verification, but we do not warrant the results to be obtained. Please read all data sheets, statements, recommendations or suggestions in conjunction with our conditions of sale, which apply to all goods supplied by us.</small>	NOT TO SCALE
	EFFECTIVE DATE: 07/15/2024
	SUPERCEDES: 10/01/2022

POLYGUARD ULTRA CRM APPLIED TO CLEAN, DRY, AND FROST FREE CONCRETE PREPARED WITH POLYGUARD 650 LT LIQUID ADHESIVE OR POLYGUARD CALIFORNIA SEALANT AT A RATE OF 250- 300 SF/GAL

STRIP OF POLYGUARD ULTRA CRM APPLIED TO CLEAN, DRY, AND FROST FREE CONCRETE PREPARED WITH POLYGUARD 650 LT LIQUID ADHESIVE OR POLYGUARD CALIFORNIA SEALANT AT A RATE OF 250 - 300 SF/GAL

POLYGUARD POLYFLOW 15 SHEET MOLDED DRAIN - FABRIC TOWARD BACKFILL

MINIMUM 3/4" CANT OF POLYGUARD LM-95

WATERSTOP - BY OTHERS

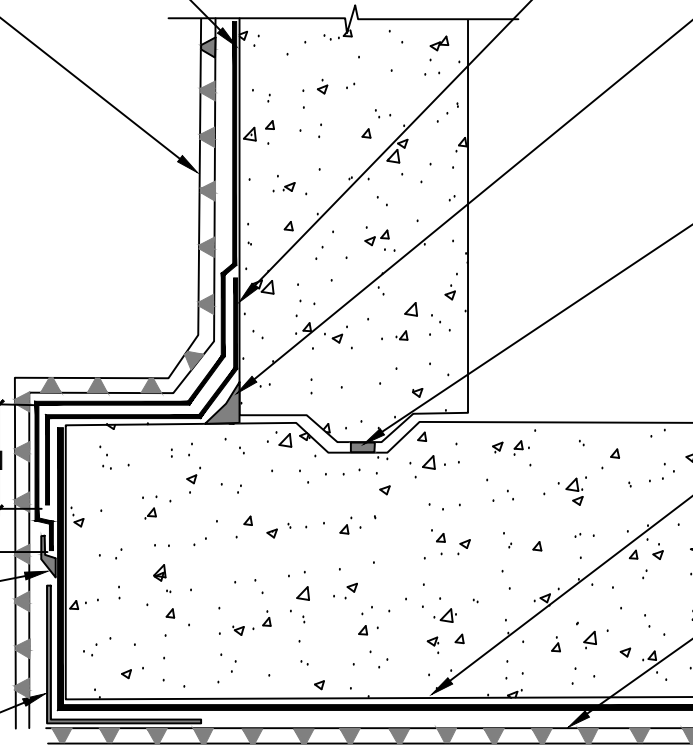
90 MIL MINIMUM THICKNESS OF POLYGUARD CR LIQUID MEMBRANE EXTENDED ONTO A MINIMUM OF 1/2" TO EACH SIDE OF THE TERMINAL EDGE APPLIED TO HDPE PREPARED WITH POLYGUARD CR SEALANT AT A RATE OF 50 - 75 SF/GAL

4" MIN
2" MIN

EXISTING POLYGUARD CRM FABRIC TOWARD CONCRETE POUR

POLYGUARD POLYFLOW 18 MOLDED SHEET DRAINAGE - FABRIC TOWARD SUBSTRATE

POLYGUARD CR INSIDE CORNER BOOT



CRH13

SECTION @ ULTRA CRM TIE IN TO EMBEDDED CRM MEMBRANE WITH POLYFLOW 15

©POLYGUARD PRODUCTS, INC.
MATERIAL SEPARATED FOR CLARITY

Polyguard Products, Inc.
P.O. Box 755 - Ennis, TX 75120
Phone: 214-515-5000
Web Site - www.polyguard.com

<p>The information provided is based on data and knowledge considered to be true and accurate and is offered for the users' consideration, investigation and verification, but we do not warrant the results to be obtained. Please read all data sheets, statements, recommendations or suggestions in conjunction with our conditions of sale, which apply to all goods supplied by us.</p>	NOT TO SCALE
	EFFECTIVE DATE: 07/15/2024
	SUPERCEDES: 10/01/2022

PENETRATION SIDEWALLS
ABRADED AND PREPARED
WITH POLYGUARD CR
SEALANT AT A RATE OF
175 - 200 SF/GAL

SEALANT AND BACKER
ROD - BY OTHERS

CONCRETE POUR - BY
OTHERS

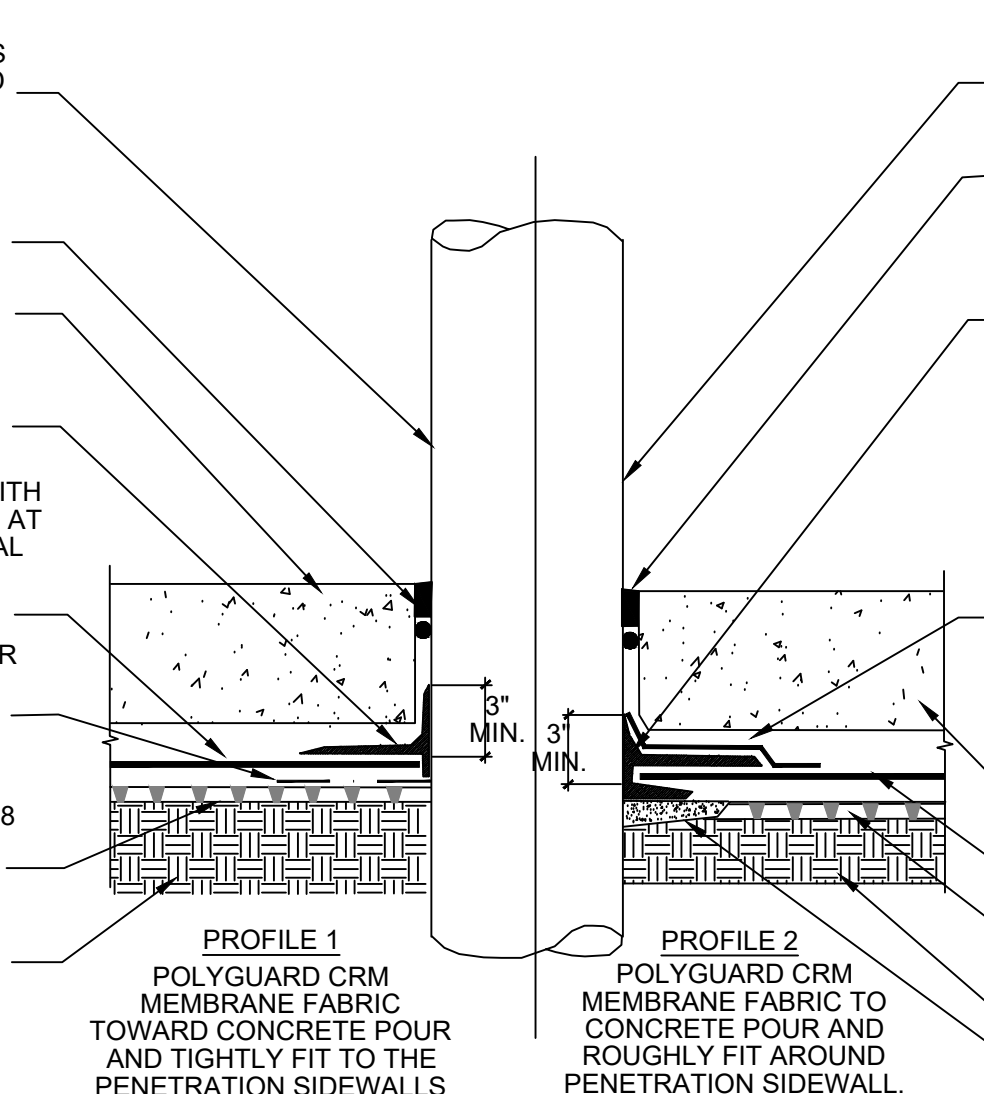
MINIMUM 90 MILS OF
POLYGUARD CR LIQUID
MEMBRANE APPLIED TO
POLYGUARD CRM
MEMBRANE PREPARED WITH
POLYGUARD CR SEALANT AT
A RATE OF 175 - 200 SF/GAL

POLYGUARD CRM
MEMBRANE FABRIC
TOWARD CONCRETE POUR

POLYGUARD CR SEAM
TAPE ADHESIVE SIDE UP

POLYGUARD POLYFLOW 18
MOLDED SHEET DRAIN
FABRIC TOWARD
SUBSTRATE

APPROVED SUBSTRATE
- BY OTHERS



PENETRATION SIDEWALLS ABRAIDED
AND PREPARED WITH POLYGUARD CR
SEALANT APPLIED AT A RATE OF 175 -
200 SF/GAL

SEALANT AND BACKER ROD - BY
OTHERS

MINIMUM 90 MILS OF POLYGUARD CR
LIQUID MEMBRANE APPLIED TO
CONCRETE PREPARED WITH
POLYGUARD CR SEALANT AT A RATE OF
175 - 200 SF/GAL - ENCAPSULATE
POLYGUARD CRM MEMBRANE INTO
WET POLYGUARD CR LIQUID
MEMBRANE AND ONTO SIDEWALLS -
PREPARE FABRIC WITH POLYGUARD
CR SEALANT AT A RATE OF 50 - 75
SF/GAL

POLYGUARD FABRIC TAPE APPLIED
OVER POLYGUARD CR LIQUID
MEMBRANE AND ONTO FABRIC OF
POLYGUARD CRM MEMBRANE
PREPARED WITH POLYGUARD CR
SEALANT AT A RATE OF 50 - 75 SF/GAL

CONCRETE POUR - BY OTHERS

POLYGUARD CRM MEMBRANE FABRIC
TOWARD CONCRETE POUR

POLYGUARD POLYFLOW 18 MOLDED
SHEET DRAIN FABRIC TOWARD
SUBSTRATE

APPROVED SUBSTRATE - BY OTHERS

CONCRETE WELL - BY OTHERS

PROFILE 1
POLYGUARD CRM
MEMBRANE FABRIC
TOWARD CONCRETE POUR
AND TIGHTLY FIT TO THE
PENETRATION SIDEWALLS

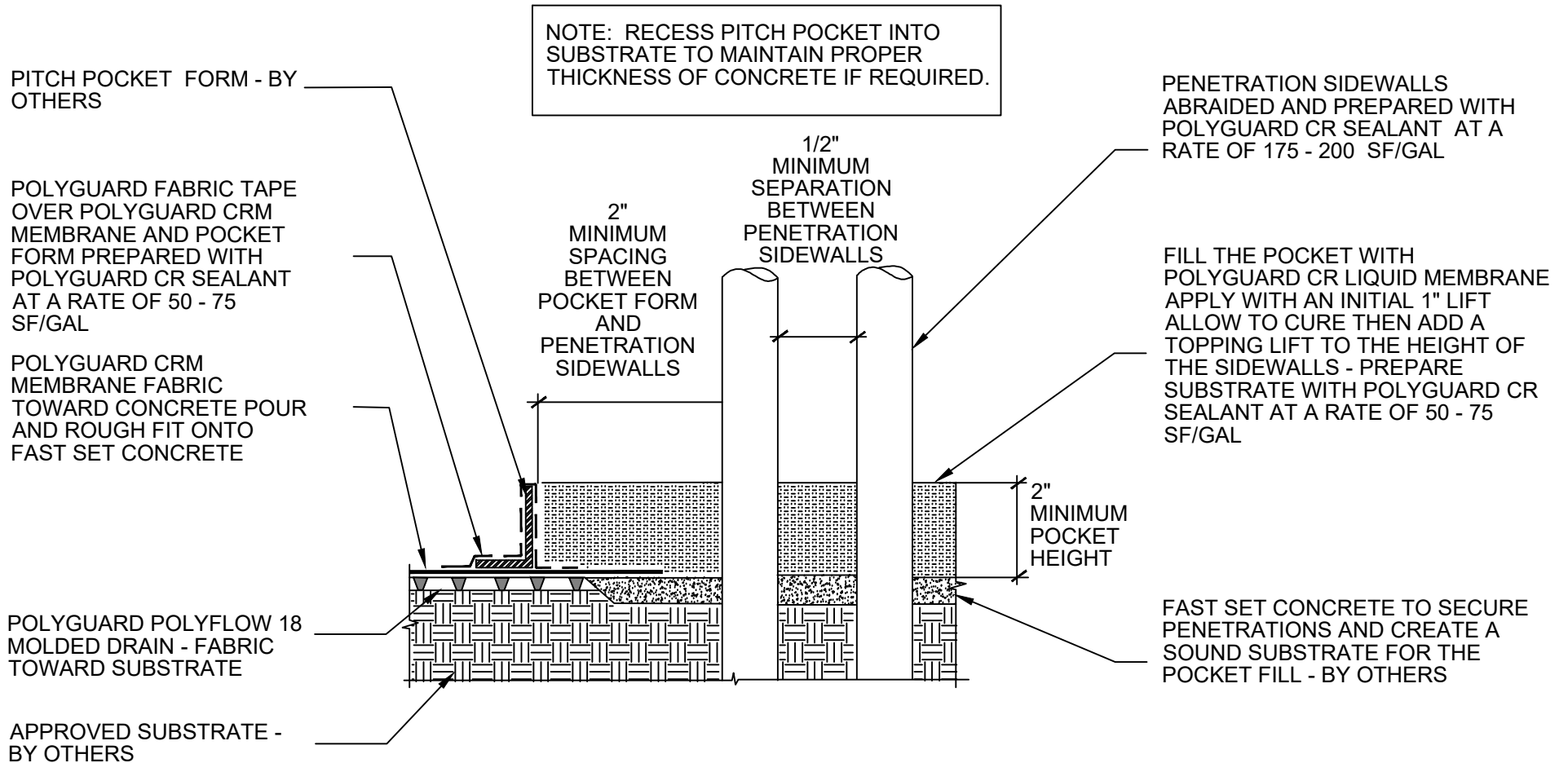
PROFILE 2
POLYGUARD CRM
MEMBRANE FABRIC TO
CONCRETE POUR AND
ROUGHLY FIT AROUND
PENETRATION SIDEWALL.

CRH14 SECTION @ CRM MEMBRANE PENETRATION PROFILE 1 AND 2

©POLYGUARD PRODUCTS, INC.
MATERIAL SEPARATED FOR CLARITY

Polyguard Products, Inc.
P.O. Box 755 - Ennis, TX 75120
Phone: 214-515-5000
Web Site - www.polyguard.com

<small>The information provided is based on data and knowledge considered to be true and accurate and is offered for the users' consideration, investigation and verification, but we do not warrant the results to be obtained. Please read all data sheets, statements, recommendations or suggestions in conjunction with our conditions of sale, which apply to all goods supplied by us.</small>	NOT TO SCALE
	EFFECTIVE DATE: 07/15/2024
	SUPERCEDES: 10/01/2022

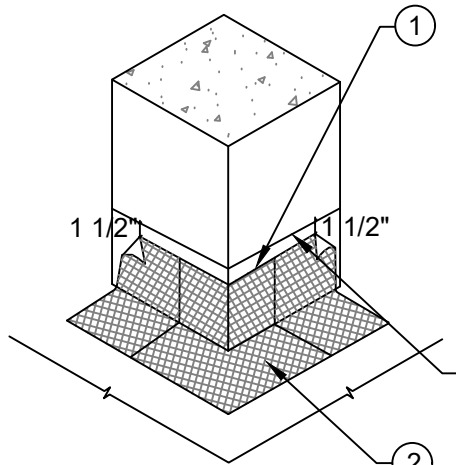


CRH15 SECTION @ HORIZONTAL CRM MEMBRANE PITCH POCKET

©POLYGUARD PRODUCTS, INC.
MATERIAL SEPARATED FOR CLARITY

Polyguard Products, Inc.
P.O. Box 755 - Ennis, TX 75120
Phone: 214-515-5000
Web Site - www.polyguard.com

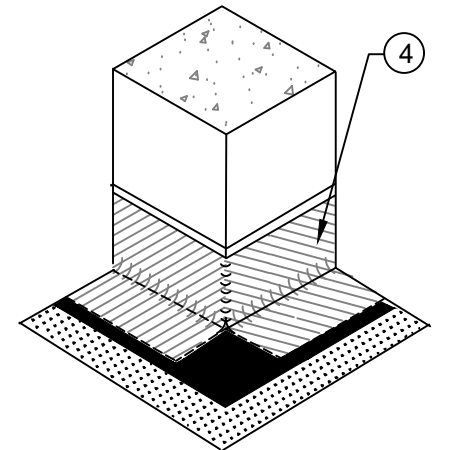
<small>The information provided is based on data and knowledge considered to be true and accurate and is offered for the users' consideration, investigation and verification, but we do not warrant the results to be obtained. Please read all data sheets, statements, recommendations or suggestions in conjunction with our conditions of sale, which apply to all goods supplied by us.</small>	NOT TO SCALE
	EFFECTIVE DATE: 07/15/2024
	SUPERCEDES: 10/01/2022



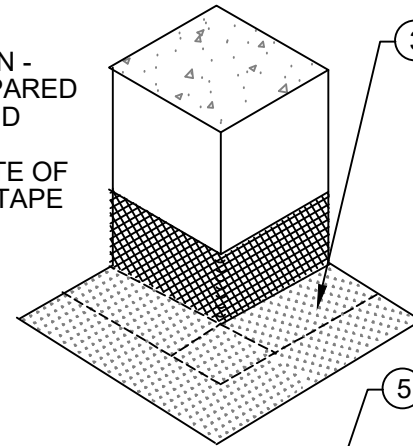
1 POLYGUARD CR SEAM TAPE APPLIED STICKY SIDE UP COMPLETELY AROUND COLUMN - APPLIED TO CONCRETE PREPARED WITH POLYGUARD 650 LT LIQUID ADHESIVE OR POLYGUARD CALIFORNIA SEALANT AT A RATE OF 250 - 300 SF/GAL - HOLD SEAM TAPE DOWN 1 1/2" FROM SPECIFIED HEIGHT OF POLYGUARD CRM MEMBRANE. REFER TO TERMINATION AT EXISTING CONCRETE DETAIL

2 PROPOSED POLYGUARD CRM MEMBRANE HEIGHT

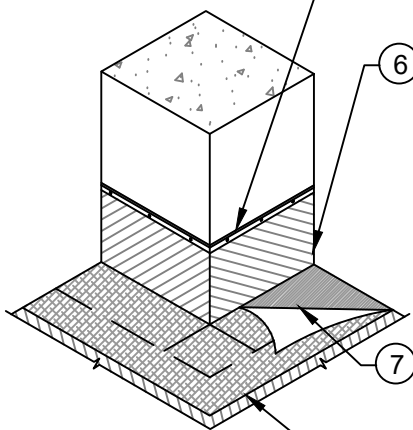
2 POLYGUARD CR OUTSIDE CORNER BOOT APPLIED OVER POLYGUARD CR SEAM TAPE - STICKY SIDE UP



4 REMOVE FILM FROM POLYGUARD CR SEAM TAPE AND ALIGN TOP EDGE OF POLYGUARD CRM MEMBRANE 'SKIRT' 1 1/2" ABOVE POLYGUARD CR SEAM TAPE EXTEND FIELD LEG OF THE 'SKIRT' 6" ONTO THE POLYGUARD CR MEMBRANE AND SEAL. REFER TO POLYGUARDENDLAP DETAIL

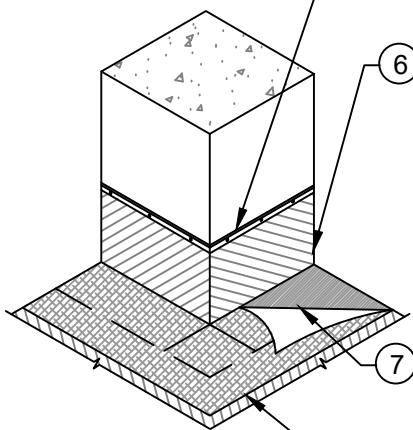


3 REMOVE FILM FROM CR SEAM TAPE ON THE HORIZONTAL AND PLACE UNDERSEAL CRM FITTING TIGHT AROUND COLUMN

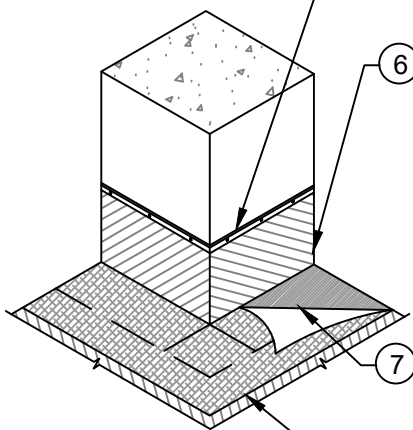


5 FOLD SKIRT BACK 1 1/2" AND APPLY A MINIMUM 90 MILS OF POLYGUARD CR LIQUID MEMBRANE APPLIED TO SUBSTRATE PREPARED WITH POLYGUARD CR SEALANT AT A RATE OF 175 - 200 SF/GAL TO CLEAN, DRY, AND FROST FREE CONCRETE.

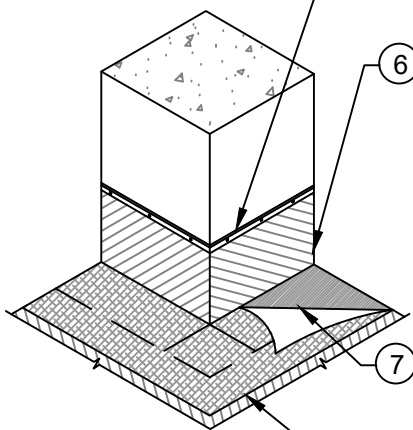
1/8" X 1" METAL TERMINATION STRIP ALIGNED ALONG THE TOP EDGE OF POLYGUARD CRM MEMBRANE 'SKIRT' - FASTENERS SPACED 2" INWARD FROM EACH CORNER AND NOT MORE THAN 8" BETWEEN ENDS. APPLY POLYGUARD CR LIQUID MEMBRANE TO TOP TERMINATION PREPARED WITH POLYGUARD CR SEALANT AT A RATE OF 175 - 200 SF/GAL AND EXTENDING 1" ONTO FABRIC OF POLYGUARD CRM MEMBRANE.



6 PREPARE AND CLEAN THE FABRIC 6" TO EACH SIDE OF THE 'SKIRT' EDGE. APPLY POLYGUARD 650 LT LIQUID ADHESIVE OR POLYGUARD CALIFORNIA SEALANT TO THE CLEANED AREA AT A RATE OF 50-75 SF / GAL.



7 COVER THE ADHESIVE OR SEALANT WITH POLYGUARD FABRIC TAPE. ROLL THE POLYGUARD FABRIC TAPE WITH A HAND-HELD, HARD-SURFACE ROLLER.



CRH16

SECTION @ CR OUTSIDE CORNER BOOT AT CORNER OR COLUMN

<small>The information provided is based on data and knowledge considered to be true and accurate and is offered for the users' consideration, investigation and verification, but we do not warrant the results to be obtained. Please read all data sheets, statements, recommendations or suggestions in conjunction with our conditions of sale, which apply to all goods supplied by us.</small>	NOT TO SCALE
	EFFECTIVE DATE: 07/15/2024
	SUPERCEDES: 10/01/2022

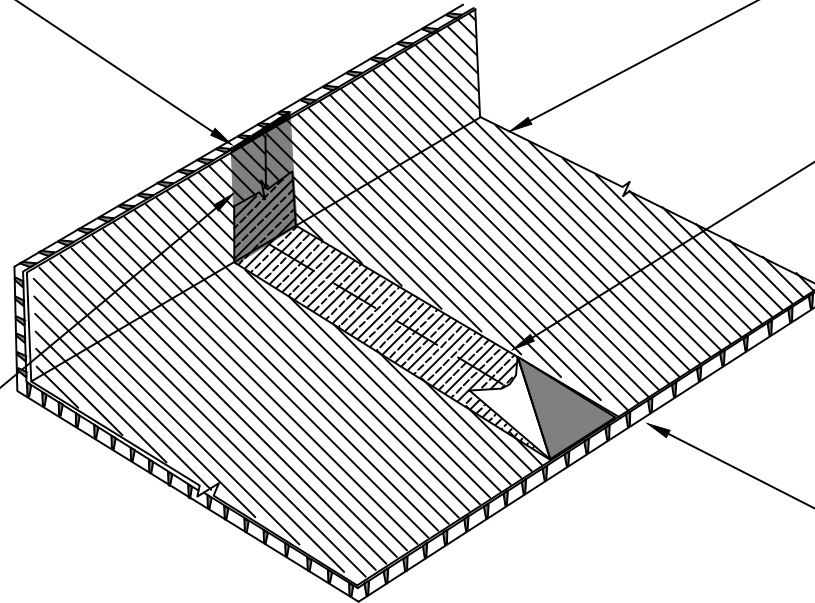
POLYGUARD CR SEAM TAPE APPLIED TO CLEAN AND DRY HDPE SIDE OF POLYGUARD CRM MEMBRANE - ALL SEAMS MUST BE TREATED WITH POLYGUARD CR SEAM TAPE

POLYGUARD CRM MEMBRANE - FABRIC TOWARD CONCRETE POUR - APPROVED SUBSTRATE NOT SHOWN

END LAP SEAM - REFERENCE POLYGUARD END LAP DETAIL

END LAP SEAM - POLYGUARD FABRIC TAPE OMITTED FROM THE DRAWING IN THIS AREA FOR CLARITY

POLYGUARD POLYFLOW 18 MOLDED SHEET DRAIN FABRIC TOWARD SUBSTRATE



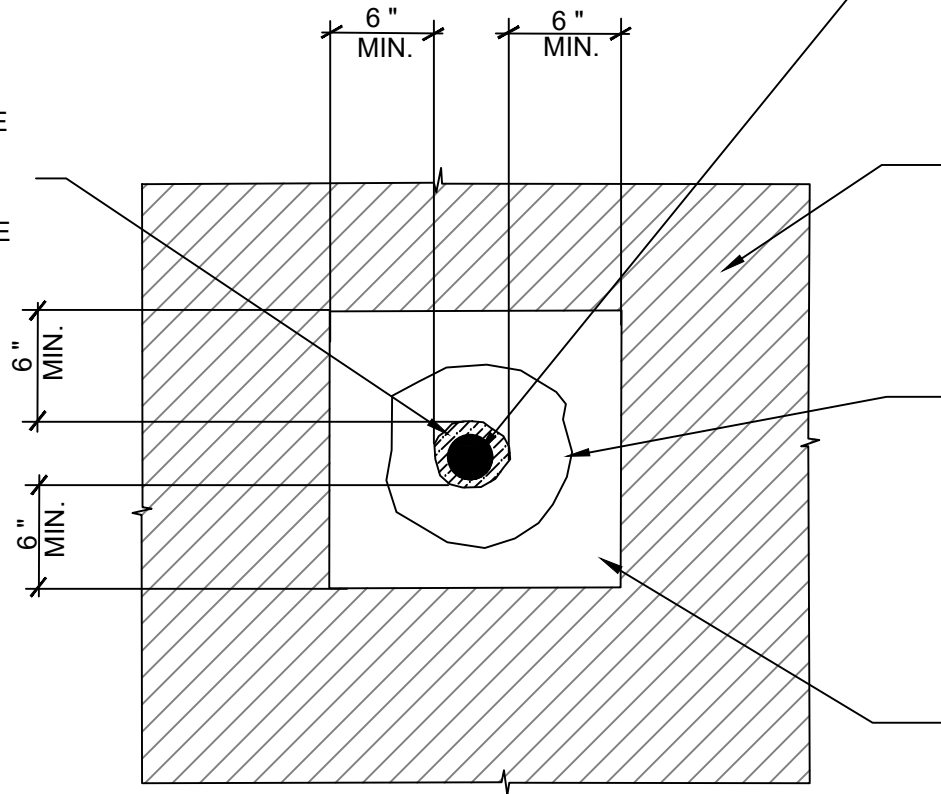
CRH17 SECTION @ PRE-APPLIED SEAL OF A VERTICAL LEG TURN UP FROM CRM MEMBRANE END LAP

Polyguard Products, Inc.
P.O. Box 755 - Ennis, TX 75120
Phone: 214-515-5000
Web Site - www.polyguard.com

©POLYGUARD PRODUCTS, INC.
MATERIAL SEPARATED FOR CLARITY

<small>The information provided is based on data and knowledge considered to be true and accurate and is offered for the users' consideration, investigation and verification, but we do not warrant the results to be obtained. Please read all data sheets, statements, recommendations or suggestions in conjunction with our conditions of sale, which apply to all goods supplied by us.</small>	NOT TO SCALE
	EFFECTIVE DATE: 07/15/2024
	SUPERCEDES: 10/01/2022

SPREAD A 1" MINIMUM LAYER OF POLYGUARD CR LIQUID MEMBRANE TO THE BACKSIDE OF THE POLYGUARD CRM MEMBRANE AND INTO HOLE COMPLETELY FILLING HOLE - ENSURE THAT ALL MEMBRANE EDGES ARE COATED COMPLETELY



REPAIR AREA - USE CORRECT POLYGUARD DETAIL FOR SIZE OF DAMAGE

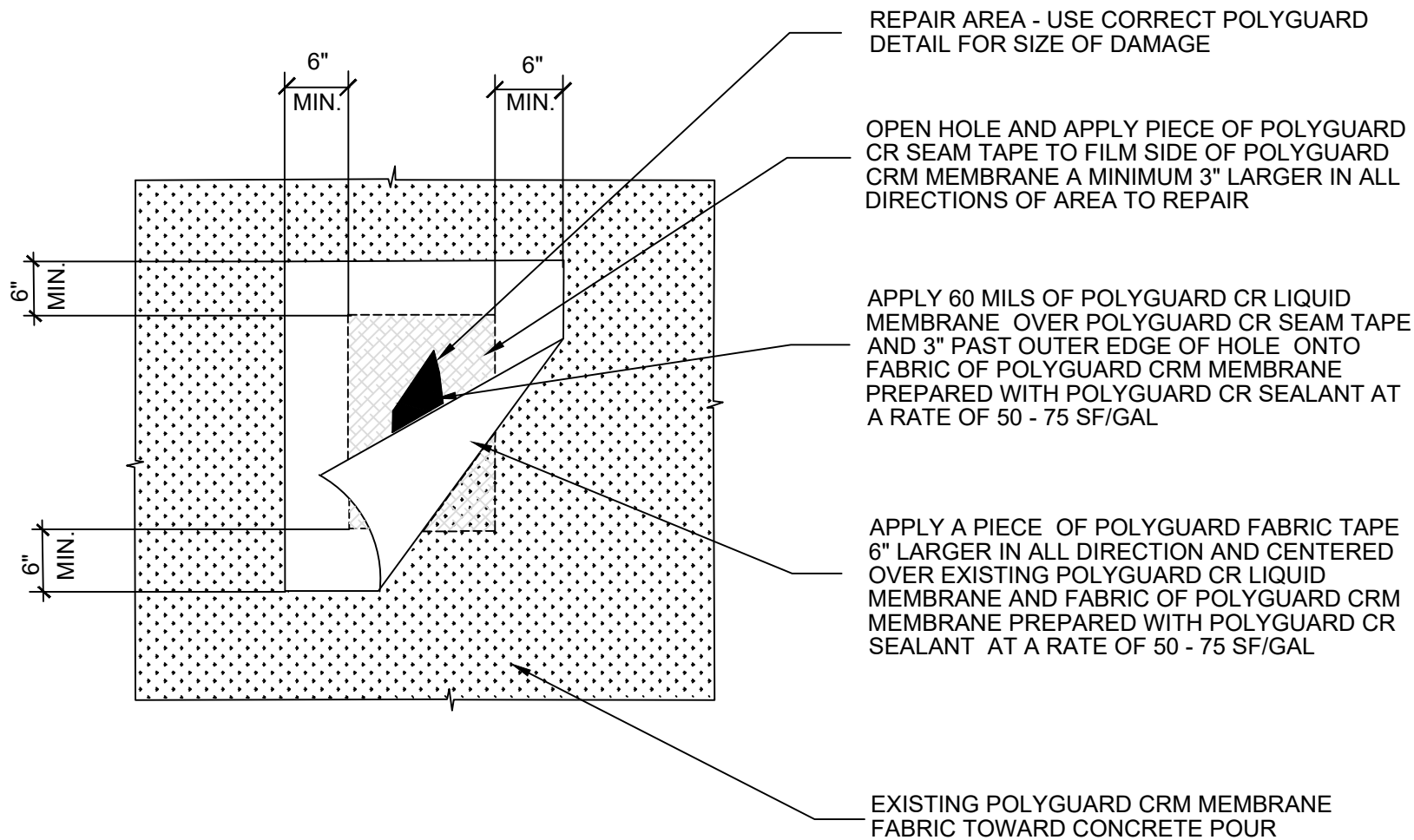
POLYGUARD CRM MEMBRANE FABRIC PREPARED WITH POLYGUARD CR SEALANT APPLIED TO A CLEANED AREA 6" BEYOND THE DAMAGE IN ALL DIRECTIONS AT A RATE OF 50 - 75 SF/GAL

APPLY 60 MILS OF POLYGUARD CR LIQUID MEMBRANE 3" PAST OUTER EDGE OF HOLE ONTO FABRIC OF POLYGUARD CRM MEMBRANE PREPARED WITH POLYGUARD CR SEALANT AT A RATE OF 50 - 75 SF/GAL

POLYGUARD FABRIC TAPE APPLIED OVER POLYGUARD CR LIQUID MEMBRANE AND FABRIC OF POLYGUARD DL CRM MEMBRANE PREPARED WITH POLYGUARD CR SEALANT AT A RATE OF 50 - 75 SF/GAL

CRH18 SECTION @ CRM MEMBRANE REPAIR PATCH LESS THAN 2"

<small>The information provided is based on data and knowledge considered to be true and accurate and is offered for the users' consideration, investigation and verification, but we do not warrant the results to be obtained. Please read all data sheets, statements, recommendations or suggestions in conjunction with our conditions of sale, which apply to all goods supplied by us.</small>	NOT TO SCALE
	EFFECTIVE DATE: 07/15/2024
	SUPERCEDES: 10/01/2022



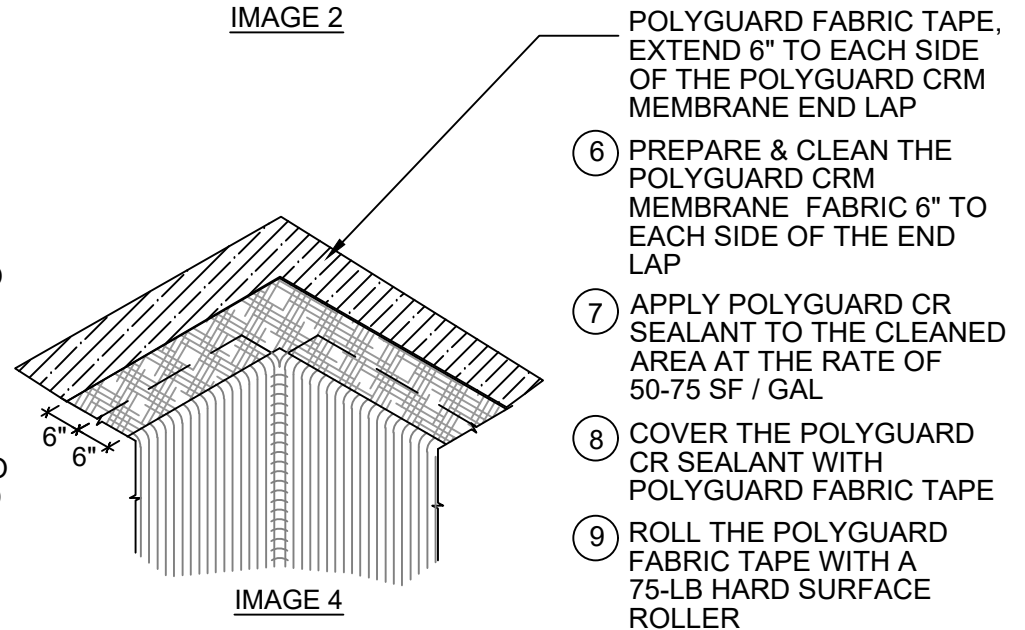
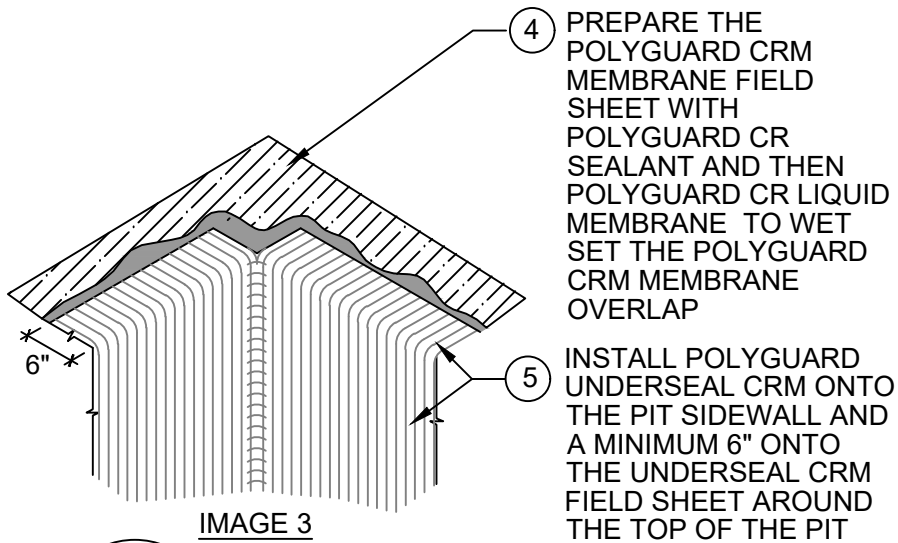
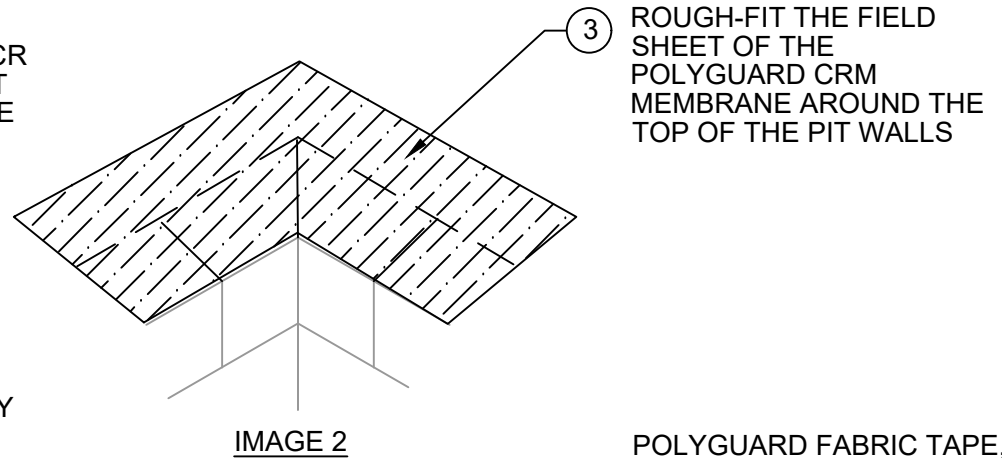
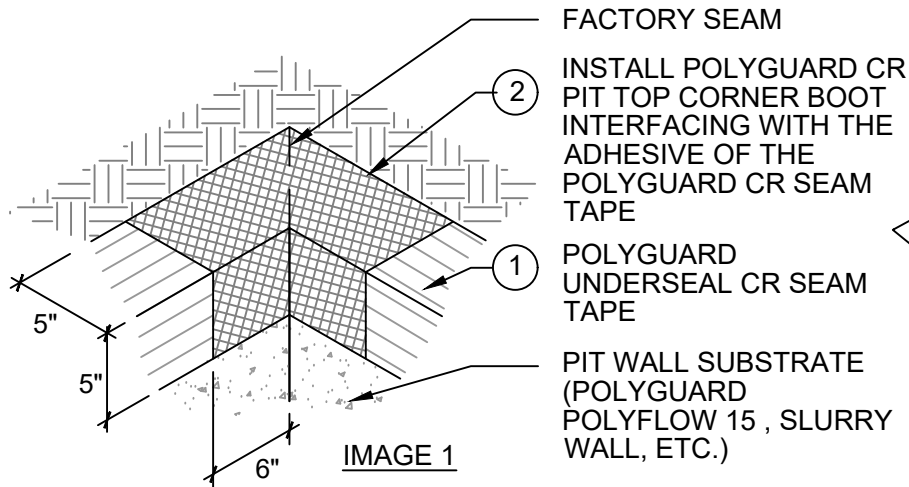
CRH19

SECTION @ CRM MEMBRANE REPAIR PATCH GREATER THAN 2"

Polyguard Products, Inc.
P.O. Box 755 - Ennis, TX 75120
Phone: 214-515-5000
Web Site - www.polyguard.com

©POLYGUARD PRODUCTS, INC.
MATERIAL SEPARATED FOR CLARITY

<small>The information provided is based on data and knowledge considered to be true and accurate and is offered for the users' consideration, investigation and verification, but we do not warrant the results to be obtained. Please read all data sheets, statements, recommendations or suggestions in conjunction with our conditions of sale, which apply to all goods supplied by us.</small>	NOT TO SCALE
	EFFECTIVE DATE: 07/15/2024
	SUPERCEDES: 10/01/2022

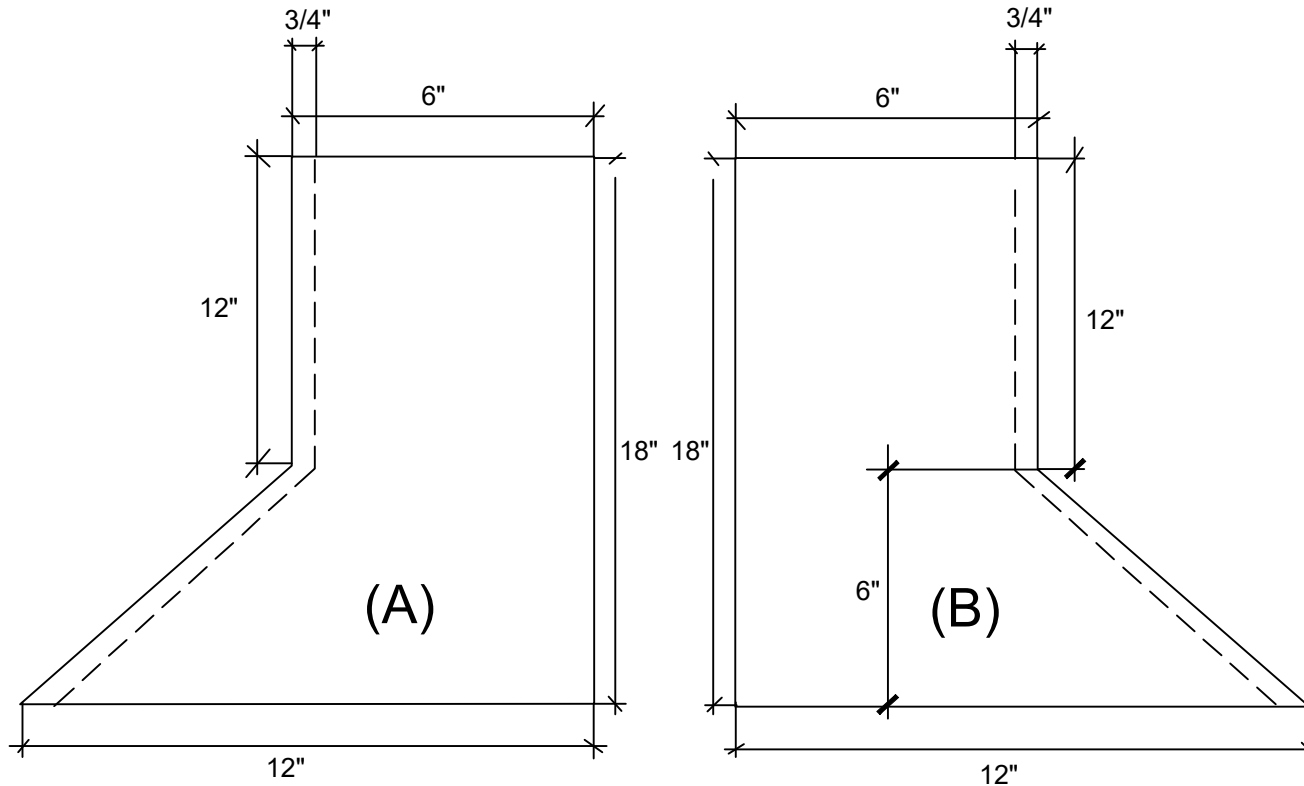


CRH20

SECTION @ CRM MEMBRANE PIT SIDEWALL TRANSITION AT TOP OF WALL

©POLYGUARD PRODUCTS, INC.
MATERIAL SEPARATED FOR CLARITY

<small>The information provided is based on data and knowledge considered to be true and accurate and is offered for the users' consideration, investigation and verification, but we do not warrant the results to be obtained. Please read all data sheets, statements, recommendations or suggestions in conjunction with our conditions of sale, which apply to all goods supplied by us.</small>	NOT TO SCALE
	EFFECTIVE DATE: 07/15/2024
	SUPERCEDES: 10/01/2022



1. Cut 2 - 18" x 18" pieces of Polyguard CR Seam Tape -
A. (A) & (B) piece cut to dimensions above and mirror image
2. Carefully score 3/4" release film at angled edge ensuring not to cut through the tape - remove the film
3. Adhere piece (A) and (B) at exposed 3/4" compound - roll tight

CRH21 SECTION @ FIELD MADE OUTSIDE CORNER BOOT DETAIL

<small>The information provided is based on data and knowledge considered to be true and accurate and is offered for the users' consideration, investigation and verification, but we do not warrant the results to be obtained. Please read all data sheets, statements, recommendations or suggestions in conjunction with our conditions of sale, which apply to all goods supplied by us.</small>	NOT TO SCALE
	EFFECTIVE DATE: 07/15/2024
	SUPERCEDES: 10/01/2022