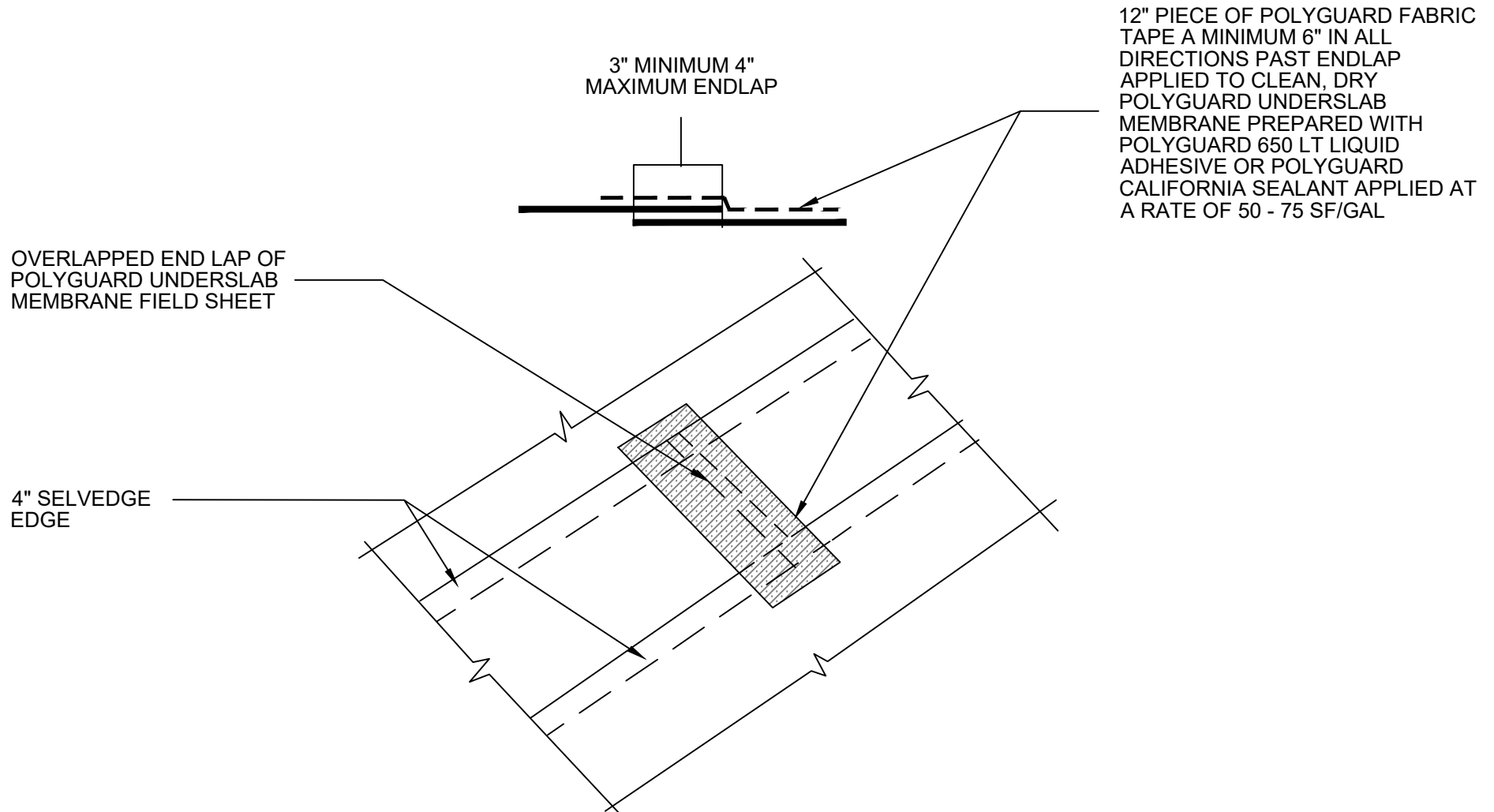


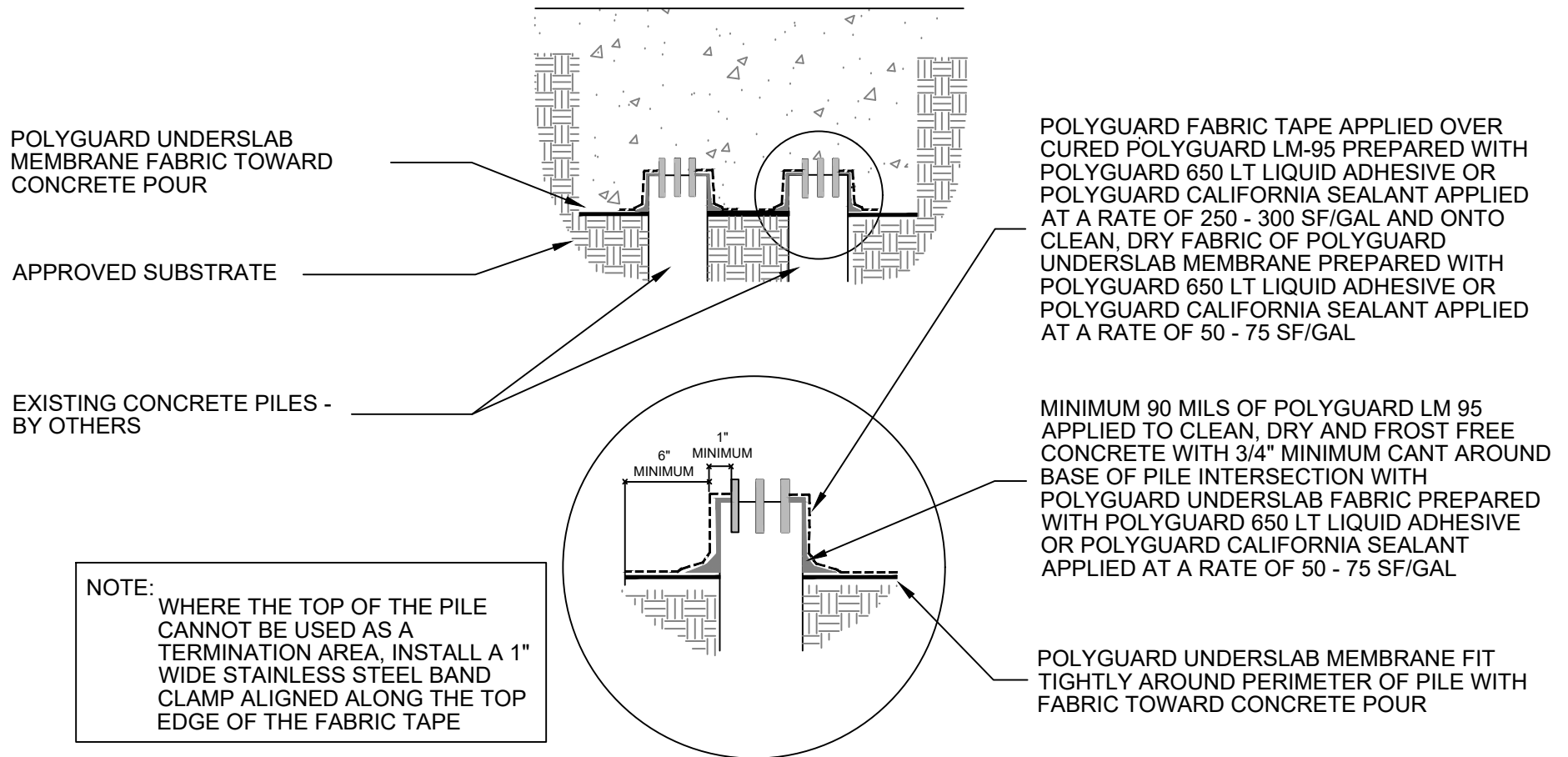
US1

SECTION @ UNDERSLAB MEMBRANE TIE IN TO BLINDSIDE MEMBRANE



US2

ISOMETRIC @ END LAP SEAM



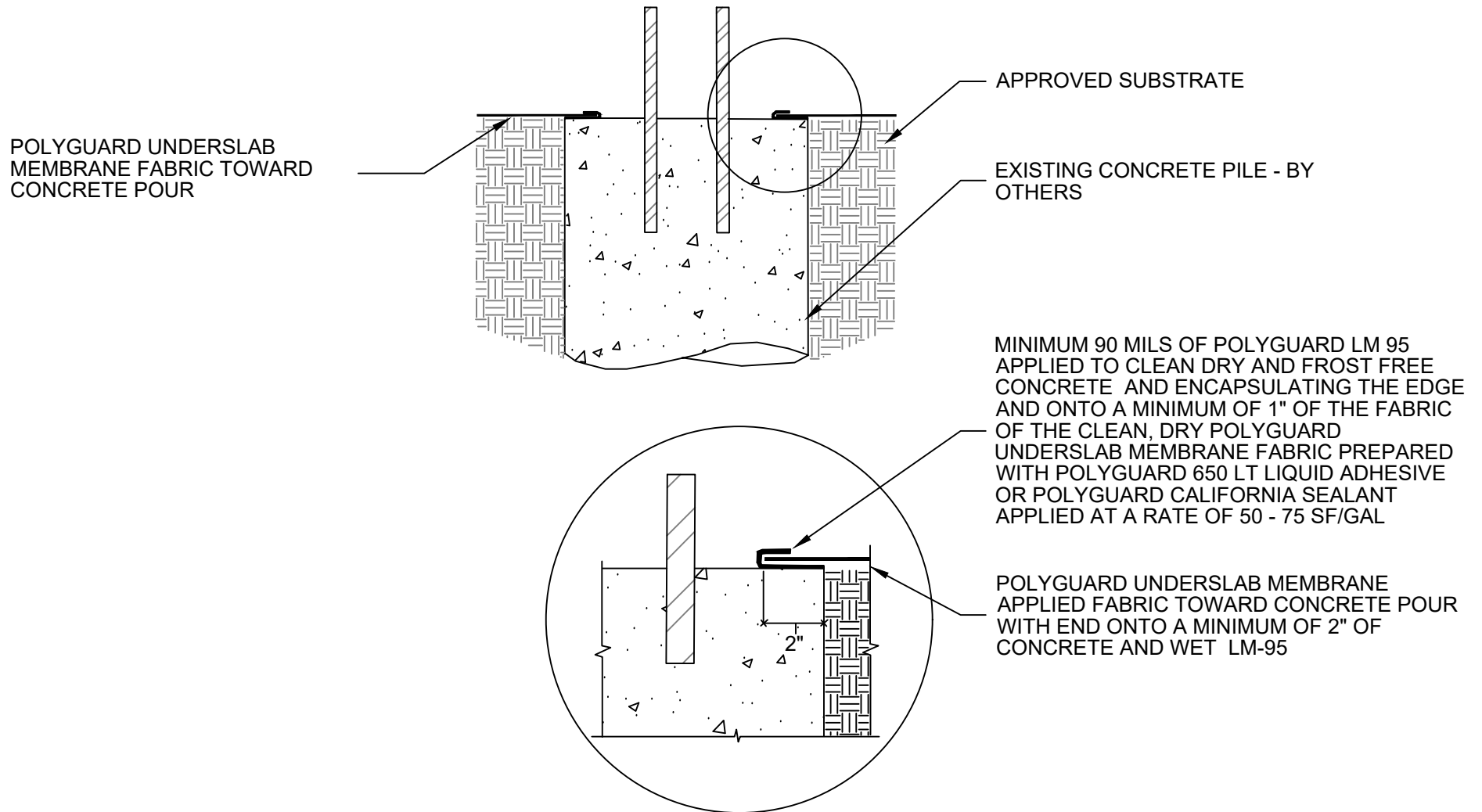
US3

## SECTION @ PILE TERMINATION - PROFILE 1

Polyguard Products, Inc.  
P.O. Box 755 - Ennis, TX 75120  
Phone: 214-515-5000  
Web Site - [www.polyguard.com](http://www.polyguard.com)

©POLYGUARD PRODUCTS, INC.  
MATERIAL SEPARATED FOR CLARITY

The information provided is based on data and knowledge considered to be true and accurate and is offered for the users' consideration, investigation and verification, but we do not warrant the results to be obtained. Please read all data sheets, statements, recommendations or suggestions in conjunction with our conditions of sale, which apply to all goods supplied by us.	NOT TO SCALE
	EFFECTIVE DATE: 10/01/2022
	SUPERCEDES: 02/01/2022



US4

SECTION @ PILE TERMINATION - PROFILE 2



©POLYGUARD PRODUCTS, INC.  
MATERIAL SEPARATED FOR CLARITY

The information provided is based on data and knowledge considered to be true and accurate and is offered for the users' consideration, investigation and verification, but we do not warrant the results to be obtained. Please read all data sheets, statements, recommendations or suggestions in conjunction with our conditions of sale, which apply to all goods supplied by us.

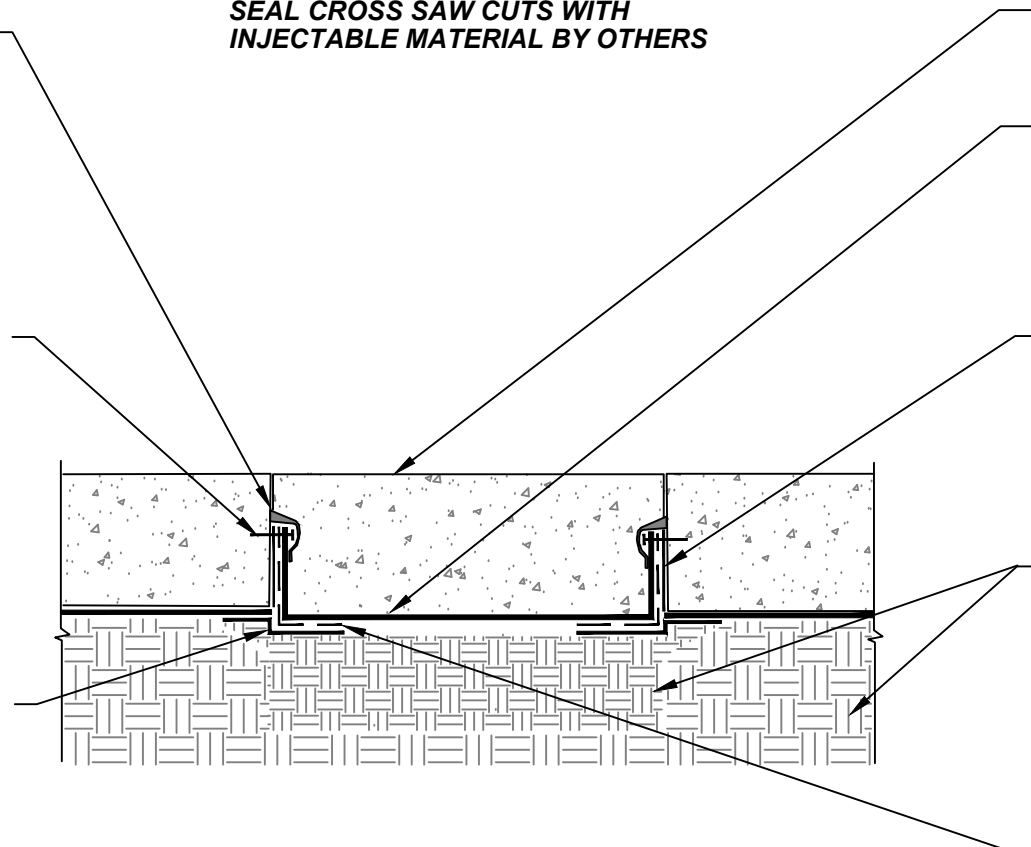
NOT TO SCALE
EFFECTIVE DATE: 10/01/2022
SUPERCEDES: 02/01/2022

MINIMUM 90 MILS OF POLYGUARD DETAIL SEALANT PW OR POLYGUARD LM-95 APPLIED TO CLEAN, DRY, AND FROST FREE CONCRETE AND THE TOP EDGE OF THE TERMINATION STRIP, OVER EACH FASTENER HEAD AND ONTO 1" OF FABRIC BELOW THE TERMINATION STRIP

1/8" X 1" METAL TERMINATION BAR AND FASTENERS SPACED 2" INWARD FROM EACH END OF TERMINATION STRIP AND NOT MORE THAN 8" SPACING BETWEEN FASTENERS- BY OTHERS

DIG OUT AND EXPOSE POLYGUARD UNDERSLAB MEMBRANE THE ENTIRE PERIMETER OF THE TRENCH A MINIMUM OF 2" PAST SAW CUTS - APPLY A 12" PIECE OF POLYGUARD 650 OR POLYGUARD PRM MEMBRANE TO CLEANED FILM SIDE OF POLYGUARD UNDERSLAB - LEAVING FILM ON EXPOSED SIDE OF MEMBRANE - ANCHOR TO SIDE OF TRENCH TO PROTECT MEMBRANE FROM BACKFILLING DAMAGE. ONCE BACKFILLED THEN LAY TAPED PIECE TO BOTTOM OF TRENCH AND REMOVE FILM FOR ADHESION OF POLYGUARD BOOT AND POLYGUARD UNDERSLAB MEMBRANE

**NOTE: AFTER CONCRETE IS REPLACED, SEAL CROSS SAW CUTS WITH INJECTABLE MATERIAL BY OTHERS**



REPLACEMENT CONCRETE

NEW PIECE OF POLYGUARD UNDERSLAB MEMBRANE ON BOTTOM OF TRENCH AND ADHERE FILM SIDE OF POLYGUARD UNDERSLAB TO POLYGUARD 606 TAPE

POLYGUARD 606 TAPE APPLIED TO CLEAN, DRY AND FROST FREE CONCRETE SIDE WALL OF TRENCH PREPARED WITH POLYGUARD 650 LT LIQUID ADHESIVE OR POLYGUARD CALIFORNIA SEALANT AT A RATE OF 250 -300 SF/GAL

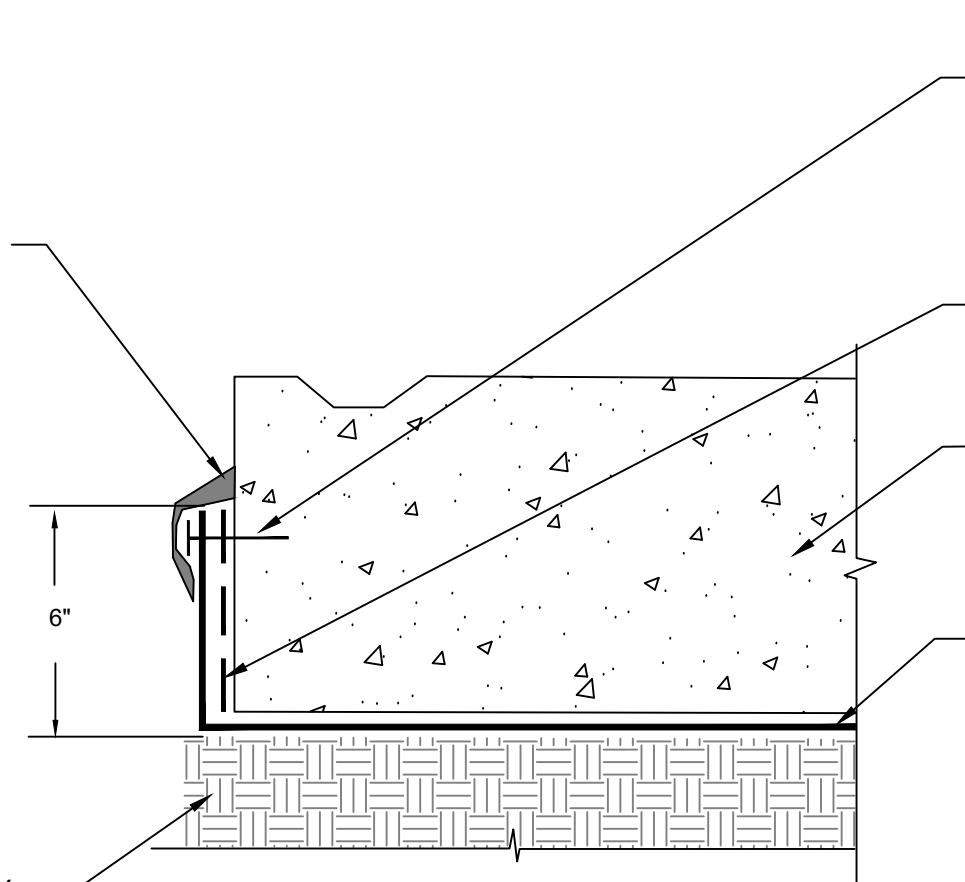
APPROVED SUBSTRATES

PLACE POLYGUARD US OUTSIDE CORNER BOOT ONTO ASPHALT SIDE OF POLYGUARD 650 MEMBRANE AND INTO CORNER - TO FIELD MAKE INSIDE CORNERS REFERENCE POLYGUARD 650 MEMBRANE BOOT FOR POLYGUARD UNDERSLAB MEMBRANE INSIDE CORNER DETAIL

US6

SECTION @ SAW CUT SLAB THROUGH EXISTING MEMBRANE

MINIMUM 90 MILS OF  
POLYGUARD DETAIL  
SEALANT PW OR  
POLYGUARD LM-95  
APPLIED TO CLEAN, DRY  
AND FROST FREE  
CONCRETE AND THE TOP  
EDGE OF THE  
TERMINATION STRIP,  
OVER EACH FASTENER  
HEAD TO AND ONTO 1"  
OF HDPE BELOW THE  
TERMINATION STRIP ALL  
SURFACES PREPARED  
WITH POLYGUARD 650 LT  
LIQUID ADHESIVE OR  
POLYGUARD CALIFORNIA  
SEALANT APPLIED AT A  
RATE OF 250 - 300 SF/GAL



TERMINATION BAR AND FASTENERS  
SPACED 2" INWARD FROM EACH END  
OF TERMINATION STRIP AND NOT  
MORE THAN 8" SPACING BETWEEN  
FASTENERS - BY OTHERS

POLYGUARD 606 TAPE APPLIED TO  
CLEAN, DRY AND FROST FREE  
CONCRETE PREPARED WITH  
POLYGUARD 650 LT LIQUID ADHESIVE  
OR POLYGUARD CALIFORNIA  
SEALANT APPLIED AT A RATE OF 250  
- 300 SF/GAL

EXISTING CONCRETE - BY OTHERS

CONTINUOUS POLYGUARD  
UNDERSLAB MEMBRANE EXTENDED  
BEYOND FACE OF FOOTER / SLAB  
FOR ADHERING TO POLYGUARD 606  
TAPE. PREPARE FABRIC OF  
POLYGUARD UNDERSLAB MEMBRANE  
WITH POLYGUARD 650 LT LIQUID  
ADHESIVE OR POLYGUARD  
CALIFORNIA SEALANT APPLIED AT A  
RATE OF 50 - 75 SF/GAL & SET WET  
ONTO POLYGUARD 606 TAPE

APPROVED SUBSTRATE - BY  
OTHERS

US7

SECTION @ POST CONCRETE POUR TERMINATION TO FACE OF FOOTER - STRUCTURAL SLAB

Polyguard Products, Inc.  
P.O. Box 755 - Ennis, TX 75120  
Phone: 214-515-5000  
Web Site - [www.polyguard.com](http://www.polyguard.com)

©POLYGUARD PRODUCTS, INC.  
MATERIAL SEPARATED FOR CLARITY

The information provided is based on data and knowledge considered to be true and accurate and is offered for the users' consideration, investigation and verification, but we do not warrant the results to be obtained. Please read all data sheets, statements, recommendations or suggestions in conjunction with our conditions of sale, which apply to all goods supplied by us.	NOT TO SCALE
	EFFECTIVE DATE: 10/01/2022
	SUPERCEDES: 02/01/2022



POLYGUARD POLYFLOW 15 / 15P  
MOLDED SHEET DRAIN WITH  
FABRIC FACING BACKFILL

POLYGUARD 650 OR POLYGUARD  
PRM MEMBRANE APPLIED TO  
CLEAN DRY AND FROST FREE  
CONCRETE PREPARED WITH  
POLYGUARD 650 LT LIQUID  
ADHESIVE OR POLYGUARD  
CALIFORNIA SEALANT APPLIED  
AT A RATE OF 250 - 300 SF/GAL

POLYGUARD TOTALFLOW  
PERIMETER HIGH CAPACITY  
SHEET MOLDED DRAINAGE WITH  
FABRIC FACING SOIL

MINIMUM 90 MIL THICKNESS OF  
POLYGUARD DETAIL SEALANT PW  
OR LM 95 - EXTENDED A  
MINIMUM OF 1/2" TO EACH SIDE  
OF THE TERMINAL EDGE

POLYGUARD TOTALFLOW  
OUTLET - END & TEE FITTINGS  
AVAILABLE - TEE OUTLET SHOWN

DRAIN PIPE - BY OTHERS  
APPROVED SUBSTRATE - BY  
OTHERS

CONCRETE WALL

MINIMUM 90 MIL THICKNESS OF  
POLYGUARD LM-95 EXTENDED  
ONTO A MINIMUM OF 2" TO EACH  
SIDE OF THE JOINT OR A 12" STRIP  
OF POLYGUARD DETAIL TAPE  
APPLIED TO PREPARED  
SUBSTRATE

MINIMUM 90 MILS POLYGUARD  
LM-95 APPLIED TO CLEAN, DRY,  
AND FROST FREE CONCRETE AND  
THE TOP EDGE OF THE  
TERMINATION BAR, OVER EACH  
FASTENER HEAD AND ONTO 1" OF  
FABRIC BELOW THE TERMINATION  
BAR

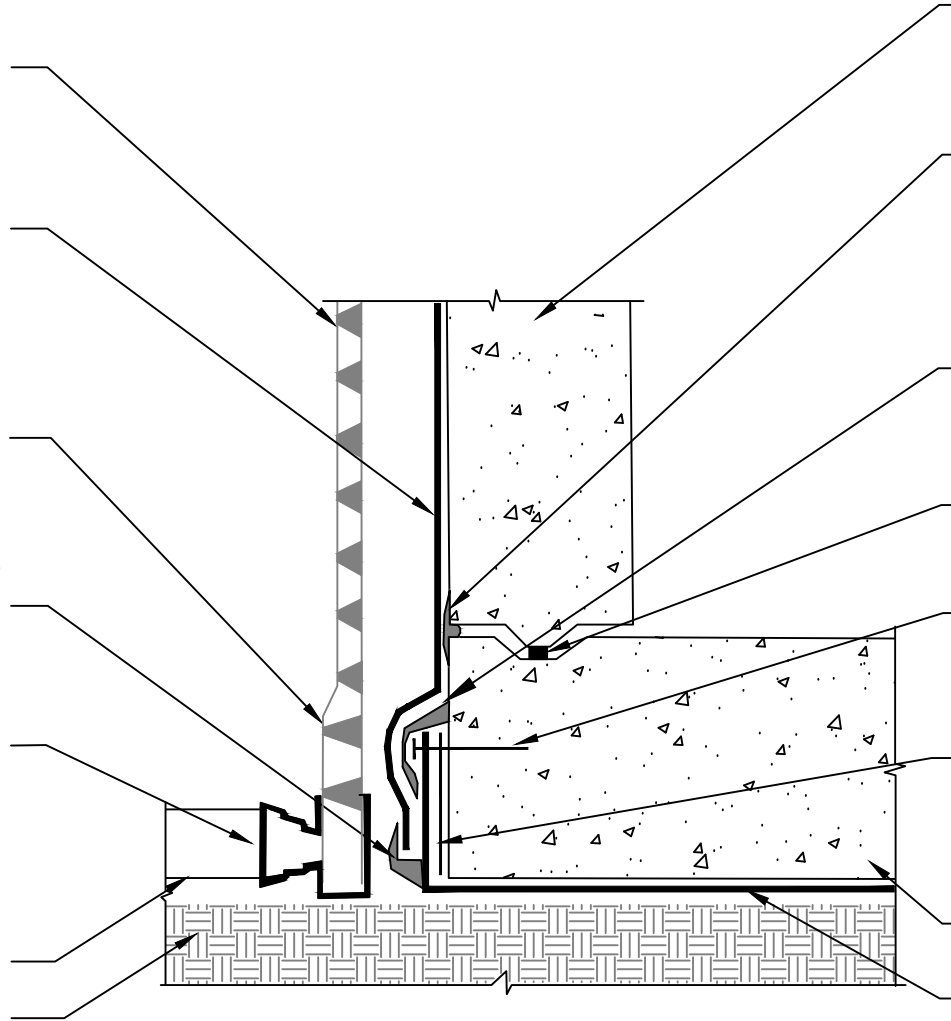
WATERSTOP - BY OTHERS

FASTENERS SPACED NO MORE  
THAN 12" OC SPACING - BY  
OTHERS

POLYGUARD 606 TAPE APPLIED  
TO CLEAN DRY AND FROST FREE  
CONCRETE PREPARED WITH  
POLYGUARD 650 LT LIQUID  
ADHESIVE OR POLYGUARD  
CALIFORNIA SEALANT APPLIED AT  
A RATE OF 250 - 300 SF/GAL

CONCRETE SLAB - BY OTHERS

POLYGUARD UNDERSLAB  
MEMBRANE FABRIC TOWARD  
CONCRETE POUR



**SECTION @ 650 OR PRM MEMBRANE TIE IN TO POST TERMINATED UNDERSLAB MEMBRANE -  
PROFILE 1**

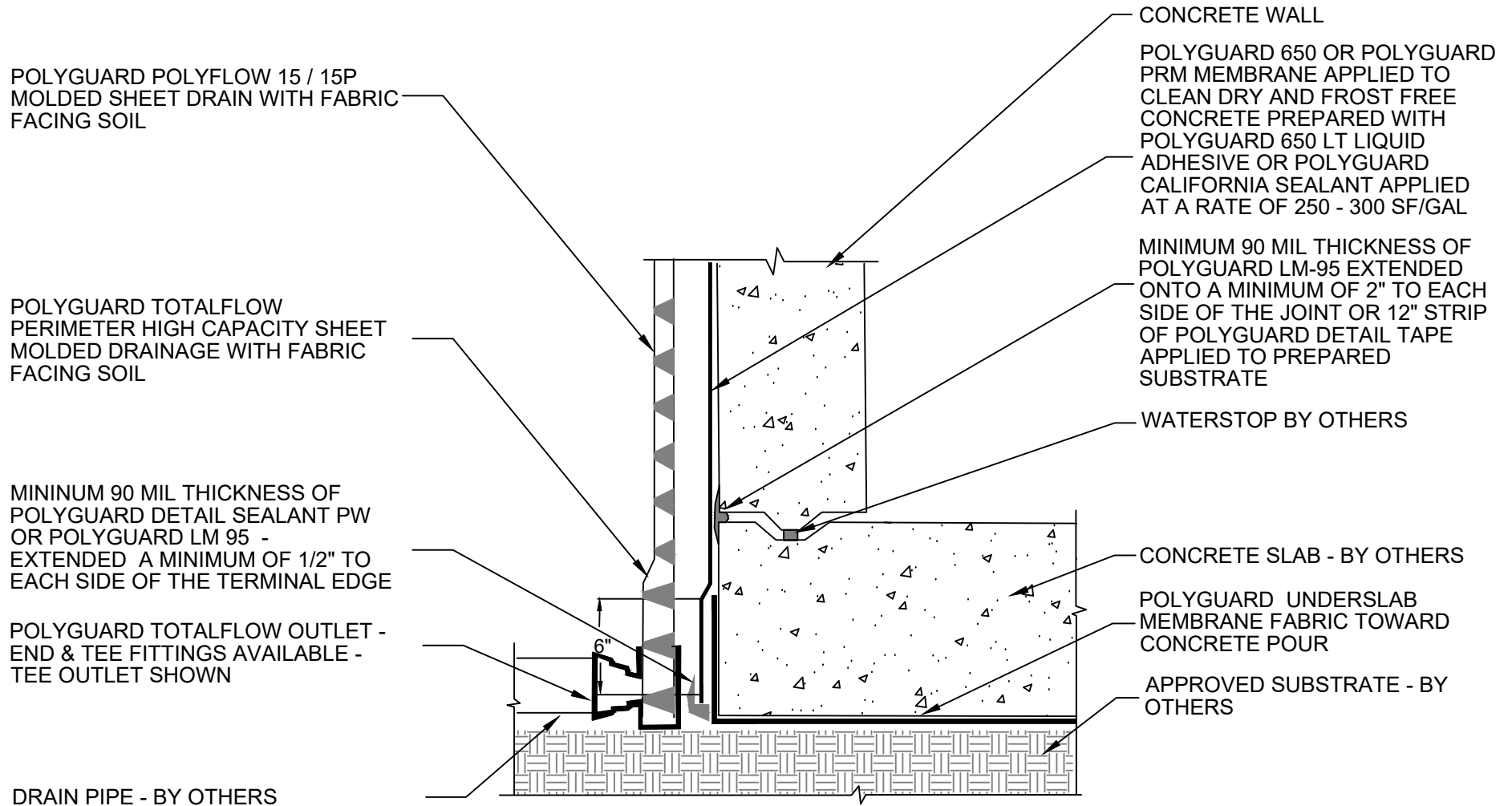
US8

Polyguard Products, Inc.  
P.O. Box 755 - Ennis, TX 75120  
Phone: 214-515-5000  
Web Site - [www.polyguard.com](http://www.polyguard.com)

©POLYGUARD PRODUCTS, INC.  
MATERIAL SEPARATED FOR CLARITY

The information provided is based on data and knowledge considered to be true and accurate and is offered for the users' consideration, investigation and verification, but we do not warrant the results to be obtained. Please read all data sheets, statements, recommendations or suggestions in conjunction with our conditions of sale, which apply to all goods supplied by us.	NOT TO SCALE
	EFFECTIVE DATE: 10/01/2022
	SUPERCEDES: 02/01/2022





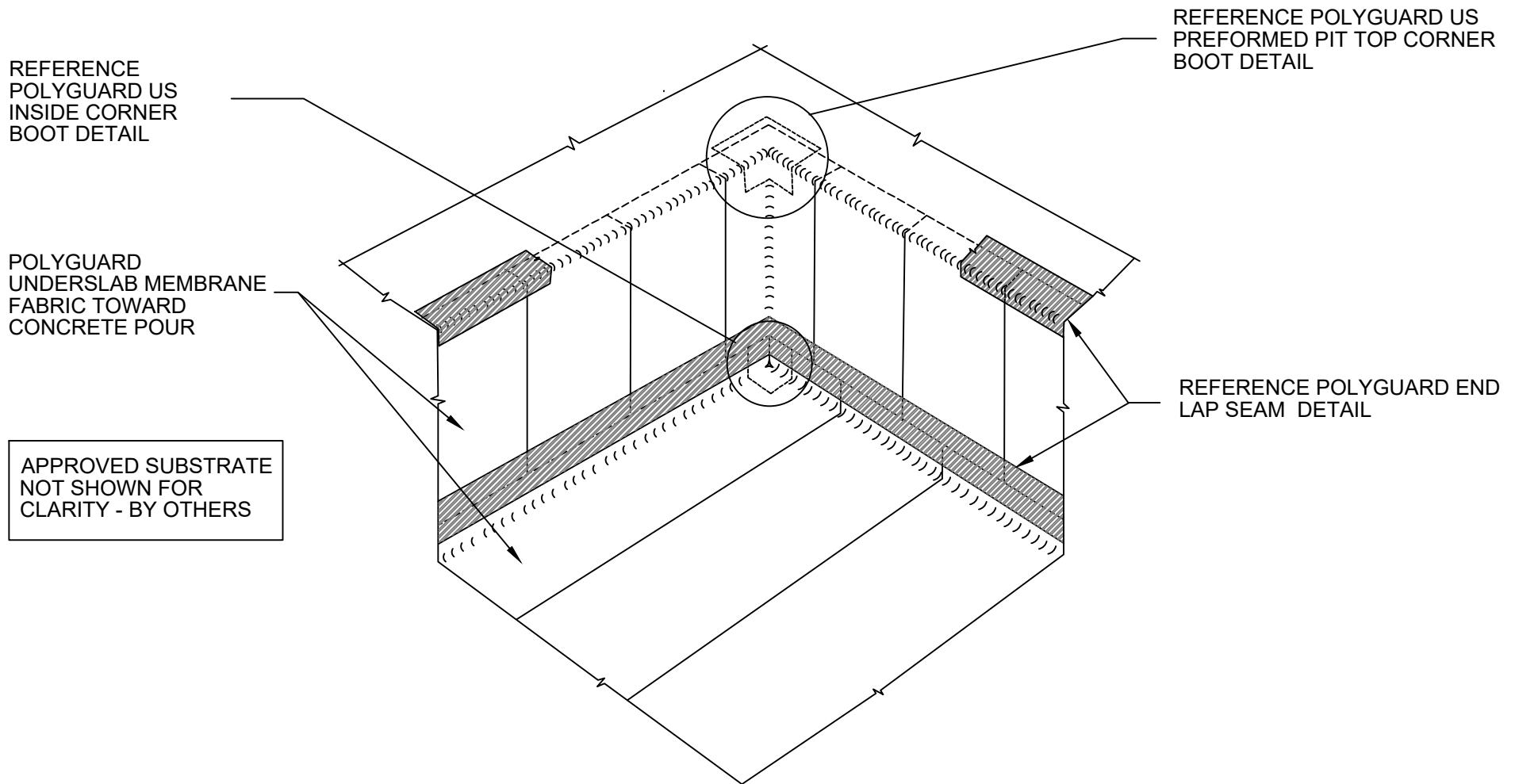
US9

SECTION @ 650 OR PRM MEMBRANE TIE IN TO EMBEDDED UNDERSLAB MEMBRANE -PROFILE 2

Polyguard Products, Inc.  
P.O. Box 755 - Ennis, TX 75120  
Phone: 214-515-5000  
Web Site - [www.polyguard.com](http://www.polyguard.com)

©POLYGUARD PRODUCTS, INC.  
MATERIAL SEPARATED FOR CLARITY

The information provided is based on data and knowledge considered to be true and accurate and is offered for the users' consideration, investigation and verification, but we do not warrant the results to be obtained. Please read all data sheets, statements, recommendations or suggestions in conjunction with our conditions of sale, which apply to all goods supplied by us.	NOT TO SCALE
	EFFECTIVE DATE: 10/01/2022
	SUPERCEDES: 02/01/2022



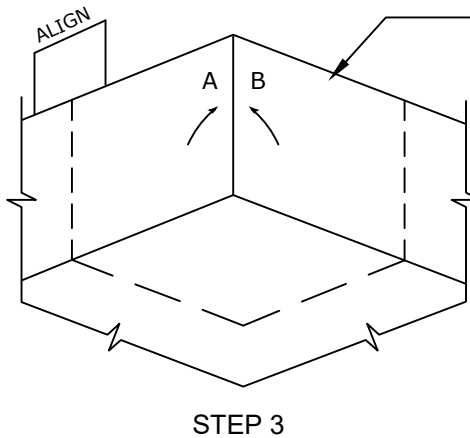
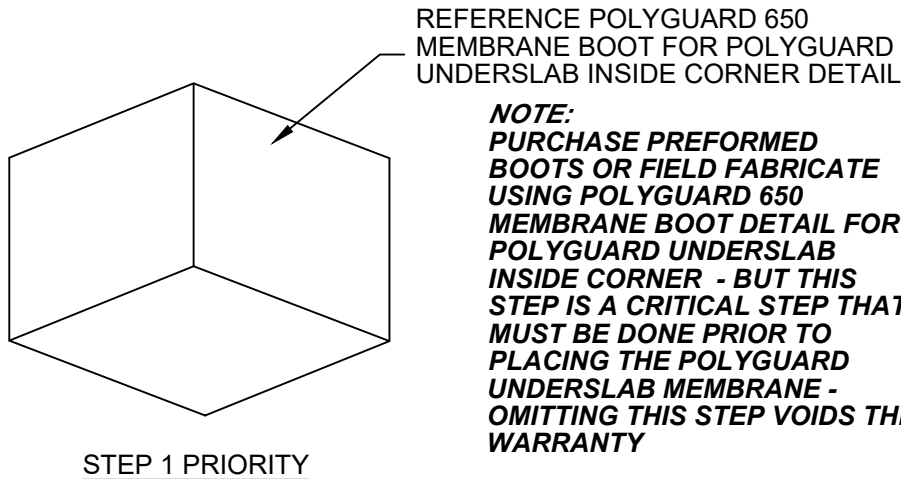
US10

## SECTION @ SUMP OR ELEVATOR PIT OVERVIEW

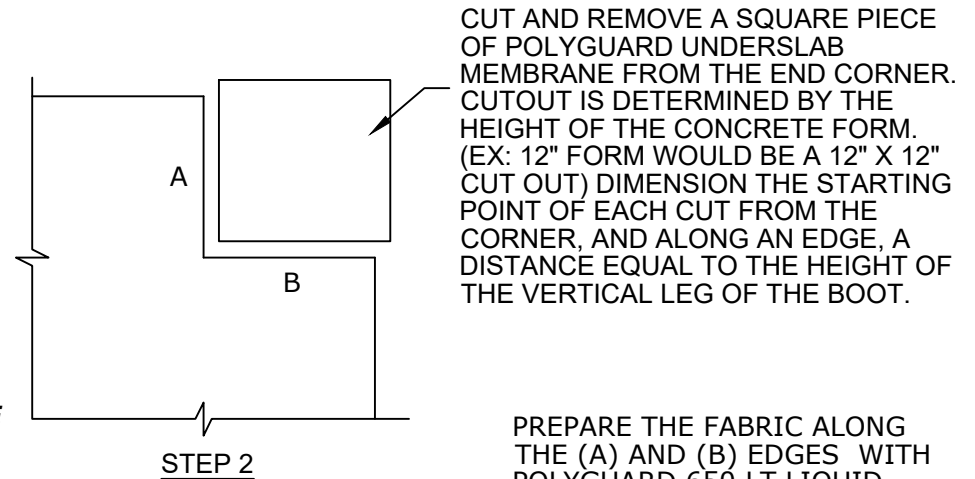
Polyguard Products, Inc.  
P.O. Box 755 - Ennis, TX 75120  
Phone: 214-515-5000  
Web Site - [www.polyguard.com](http://www.polyguard.com)

©POLYGUARD PRODUCTS, INC.  
MATERIAL SEPARATED FOR CLARITY

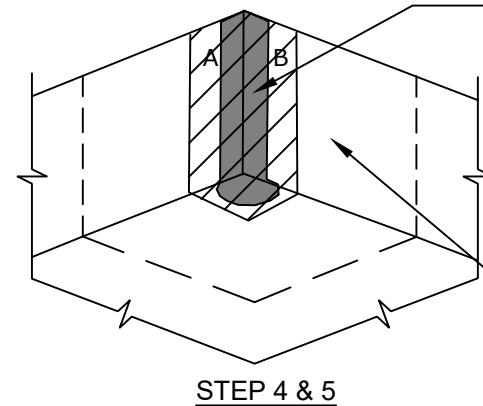
The information provided is based on data and knowledge considered to be true and accurate and is offered for the users' consideration, investigation and verification, but we do not warrant the results to be obtained. Please read all data sheets, statements, recommendations or suggestions in conjunction with our conditions of sale, which apply to all goods supplied by us.	NOT TO SCALE
	EFFECTIVE DATE: 10/01/2022
	SUPERCEDES: 02/01/2022



POSITION THE CUT  
POLYGUARD UNDERSLAB  
MEMBRANE INTO THE  
CORNER AND OVER THE  
BOOT SO THE (A) AND (B)  
EDGES MEET IN THE  
VERTICAL LEG OF THE BOOT.  
FORM-FIT THE PIECE TO THE  
CONTOURS OF THE CORNER.  
CREASE THE POLYGUARD  
UNDERSLAB MATERIAL TO  
ESTABLISH A CONFORMING  
SHAPE. AFTER CREASING,  
FOLD THE PIECE BACK,  
REMOVE THE RELEASE  
PAPER FROM THE  
HORIZONTAL LEG OF THE  
BOOT, THEN OVERLAY AND  
PRESS THE HORIZONTAL LEG  
INTO THE BOOT. REPEAT FOR  
EACH VERTICAL LEG.



CUT AND REMOVE A SQUARE PIECE  
OF POLYGUARD UNDERSLAB  
MEMBRANE FROM THE END CORNER.  
CUTOUT IS DETERMINED BY THE  
HEIGHT OF THE CONCRETE FORM.  
(EX: 12" FORM WOULD BE A 12" X 12"  
CUT OUT) DIMENSION THE STARTING  
POINT OF EACH CUT FROM THE  
CORNER, AND ALONG AN EDGE, A  
DISTANCE EQUAL TO THE HEIGHT OF  
THE VERTICAL LEG OF THE BOOT.

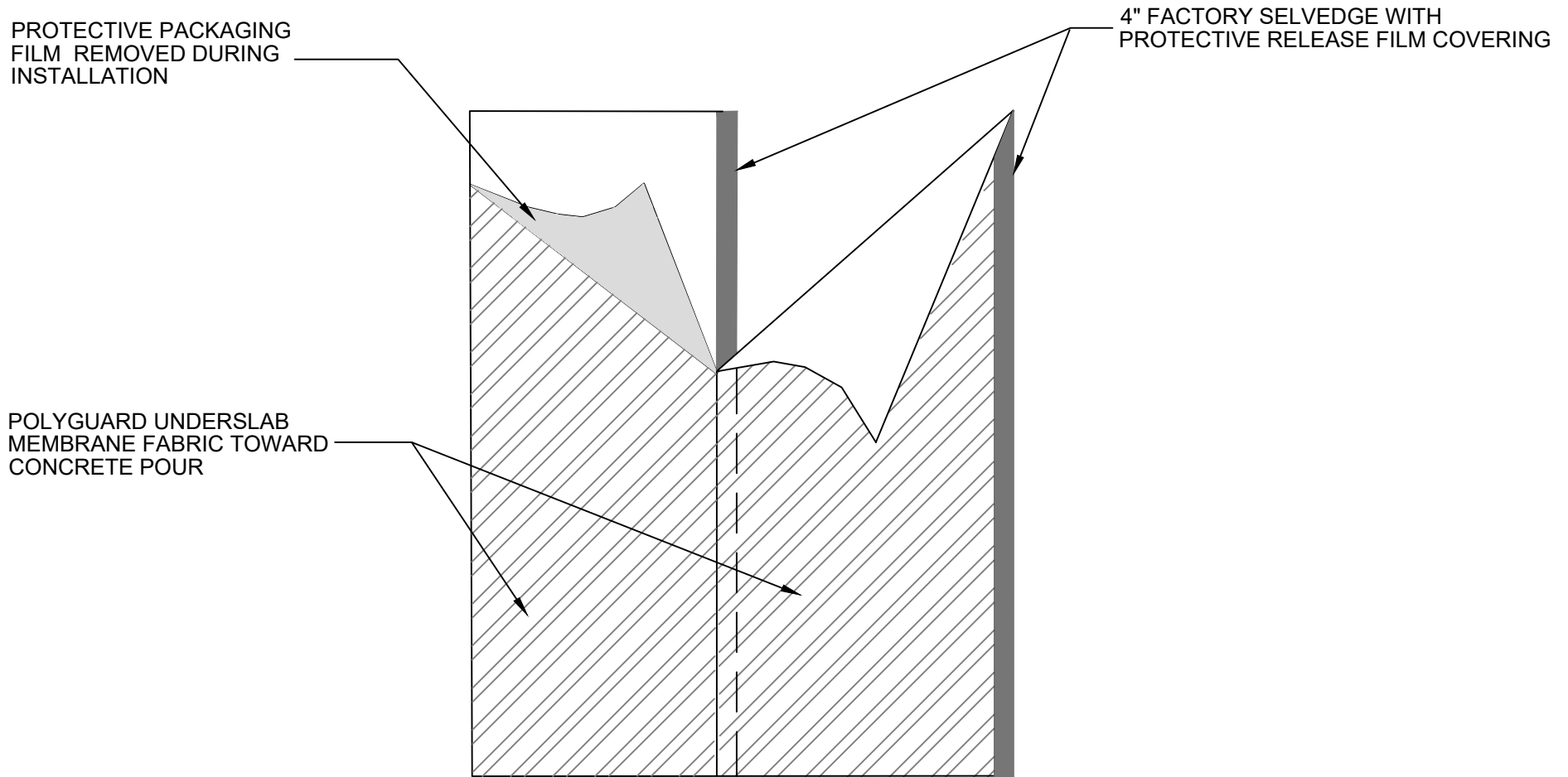


PREPARE THE FABRIC ALONG  
THE (A) AND (B) EDGES WITH  
POLYGUARD 650 LT LIQUID  
ADHESIVE OR POLYGUARD  
CALIFORNIA SEALANT APPLIED  
AT A RATE OF 50 - 75 SF/GAL.  
SEAL THE (A) AND (B) EDGES  
AND BOTTOM CORNER USING A  
MINIMUM 90 MIL THICKNESS BY  
2" WIDE APPLICATION OF  
POLYGUARD LM-95 TROWELED  
ONTO EACH LEG AND JOINED AT  
THE INTERSECTING PLANES.

CUT AND APPLY POLYGUARD  
FABRIC TAPE TIGHTLY OVER  
THE CURED POLYGUARD LM-95  
AND POLYGUARD UNDERSLAB  
MEMBRANE - PREPARE THE  
FABRIC WITH POLYGUARD 650  
LT LIQUID ADHESIVE OR  
POLYGUARD CALIFORNIA  
SEALANT APPLIED AT A RATE OF  
50 - 75 SF/GAL.

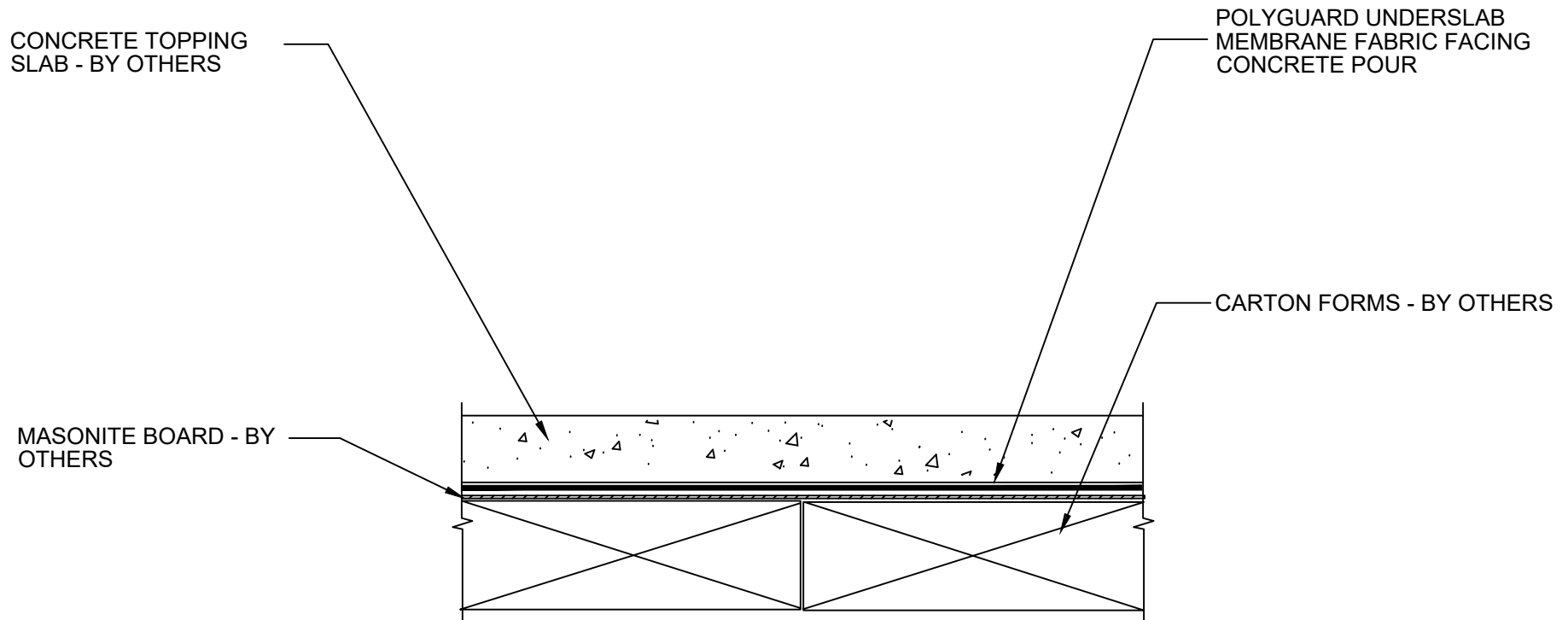
US11

SECTION @ INSIDE CORNER DETAIL



US12

OVERVIEW @ SIDE LAPS - SELVEDGE



US13

## OVERVIEW @ CARTON FORM DETAIL

Polyguard Products, Inc.  
P.O. Box 755 - Ennis, TX 75120  
Phone: 214-515-5000  
Web Site - [www.polyguard.com](http://www.polyguard.com)

©POLYGUARD PRODUCTS, INC.  
MATERIAL SEPARATED FOR CLARITY

The information provided is based on data and knowledge considered to be true and accurate and is offered for the users' consideration, investigation and verification, but we do not warrant the results to be obtained. Please read all data sheets, statements, recommendations or suggestions in conjunction with our conditions of sale, which apply to all goods supplied by us.

NOT TO SCALE
EFFECTIVE DATE: 10/01/2022
SUPERCEDES: 02/01/2022

POLYGUARD 650 OR POLYGUARD PRM MEMBRANE APPLIED TO CLEAN, DRY, AND FROST FREE CONCRETE PREPARED WITH POLYGUARD 650 LT LIQUID ADHESIVE OR POLYGUARD CALIFORNIA SEALANT AT A RATE OF 250- 300 SF/GAL

POLYGUARD POLYFLOW 15 / 15P MOLDED SHEET DRAIN FABRIC FACING BACKFILL

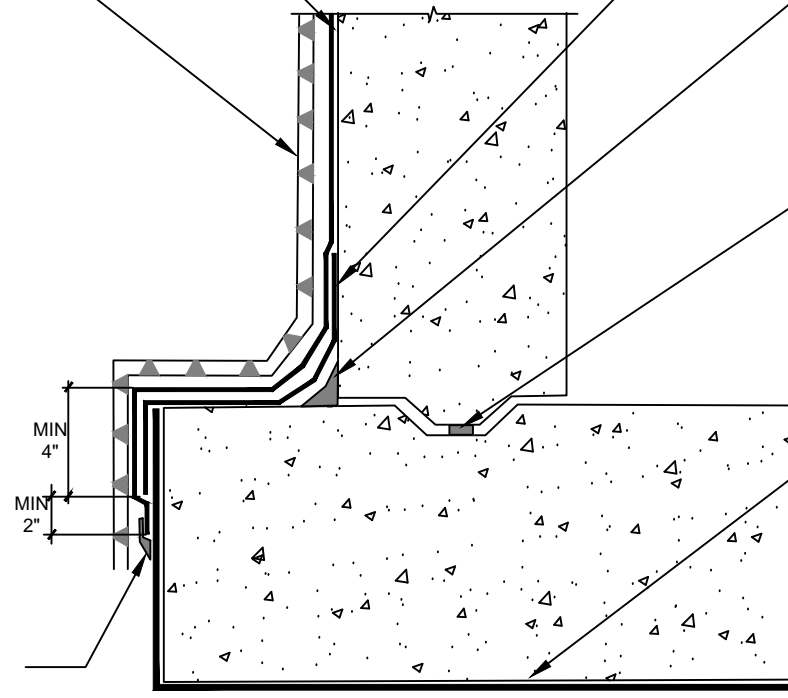
POLYGUARD 650 MEMBRANE OR POLYGUARD DETAIL TAPE APPLIED TO CLEAN, DRY, AND FROST FREE CONCRETE PREPARED WITH POLYGUARD 650 LT LIQUID ADHESIVE OR POLYGUARD CALIFORNIA SEALANT APPLIED AT A RATE OF 250 - 300 SF/GAL

POLYGUARD DETAIL SEALANT PW OR POLYGUARD LM-95 APPLIED AND TOOLED TO FORM A 3/4" CANT

WATERSTOP - BY OTHERS

EXISTING POLYGUARD UNDERSLAB MEMBRANE

90 MIL MINIMUM THICKNESS OF POLYGUARD DETAIL SEALANT PW OR POLYGUARD LM-95 EXTENDED ONTO A MINIMUM OF 1/2" TO EACH SIDE OF THE TERMINAL EDGE



US14

## SECTION @ 650 OR PRM MEMBRANE TIE IN TO EMBEDDED UNDERSLAB MEMBRANE WITH POLYFLOW 15 / 15P

Polyguard Products, Inc.  
P.O. Box 755 - Ennis, TX 75120  
Phone: 214-515-5000  
Web Site - [www.polyguard.com](http://www.polyguard.com)

©POLYGUARD PRODUCTS, INC.  
MATERIAL SEPARATED FOR CLARITY

The information provided is based on data and knowledge considered to be true and accurate and is offered for the users' consideration, investigation and verification, but we do not warrant the results to be obtained. Please read all data sheets, statements, recommendations or suggestions in conjunction with our conditions of sale, which apply to all goods supplied by us.

NOT TO SCALE
EFFECTIVE DATE: 10/01/2022
SUPERCEDES: 02/01/2022

PENETRATION - BY OTHERS ABRAID THE SIDEWALLS

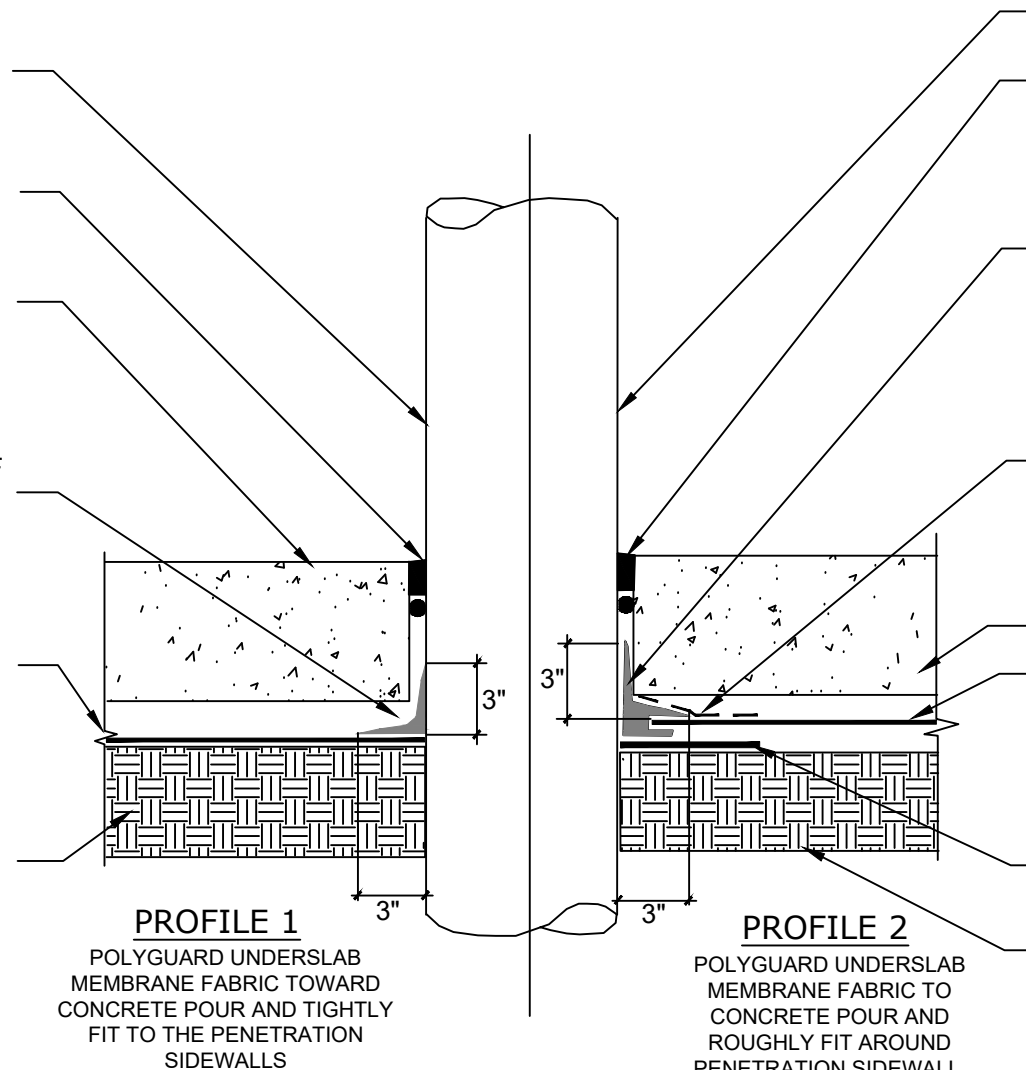
SEALANT AND BACKER ROD -BY OTHERS

CONCRETE - BY OTHERS

MINIMUM 90 MILS OF POLYGUARD LM-95 APPLIED TO SIDEWALLS AND FABRIC PREPARED WITH POLYGUARD 650 LT LIQUID ADHESIVE OR POLYGUARD CALIFORNIA SEALANT APPLIED AT A RATE OF 50-75 SF/GAL

POLYGUARD UNDERSLAB MEMBRANE FABRIC TOWARD CONCRETE POUR

APPROVED SUBSTRATE - BY OTHERS



PENETRATION - BY OTHERS ABRAID THE SIDEWALLS

SEALANT AND BACKER ROD BY OTHERS

MINIMUM 90 MILS OF POLYGUARD LM-95 APPLIED TO SIDEWALLS AND ENCAPSULATING THE EDGE OF THE POLYGUARD UNDERSLAB MEMBRANE MINIMUM OF 3" - PREPARE FABRIC WITH POLYGUARD 650 LT LIQUID ADHESIVE OR POLYGUARD CALIFORNIA SEALANT AT A RATE OF 50 - 75 SF/GAL

POLYGUARD FABRIC TAPE APPLIED TO POLYGUARD UNDERSLAB MEMBRANE PREPARED WITH POLYGUARD 650 LT LIQUID ADHESIVE OR POLYGUARD CALIFORNIA SEALANT AT A RATE OF 50 - 75 SF/GAL AND ONTO CURED POLYGUARD LM-95

CONCRETE POUR - BY OTHERS  
POLYGUARD UNDERSLAB MEMBRANE FABRIC TOWARD CONCRETE POUR

POLYGUARD UNDERSLAB MEMBRANE PATCH TIGHTLY FIT AROUND PENETRATION SIDEWALLS PREPARE FABRIC WITH POLYGUARD 650 LT LIQUID ADHESIVE OR POLYGUARD CALIFORNIA SEALANT AT A RATE OF 50 - 75 SF/GAL

APPROVED SUBSTRATE - BY OTHERS

**US15**

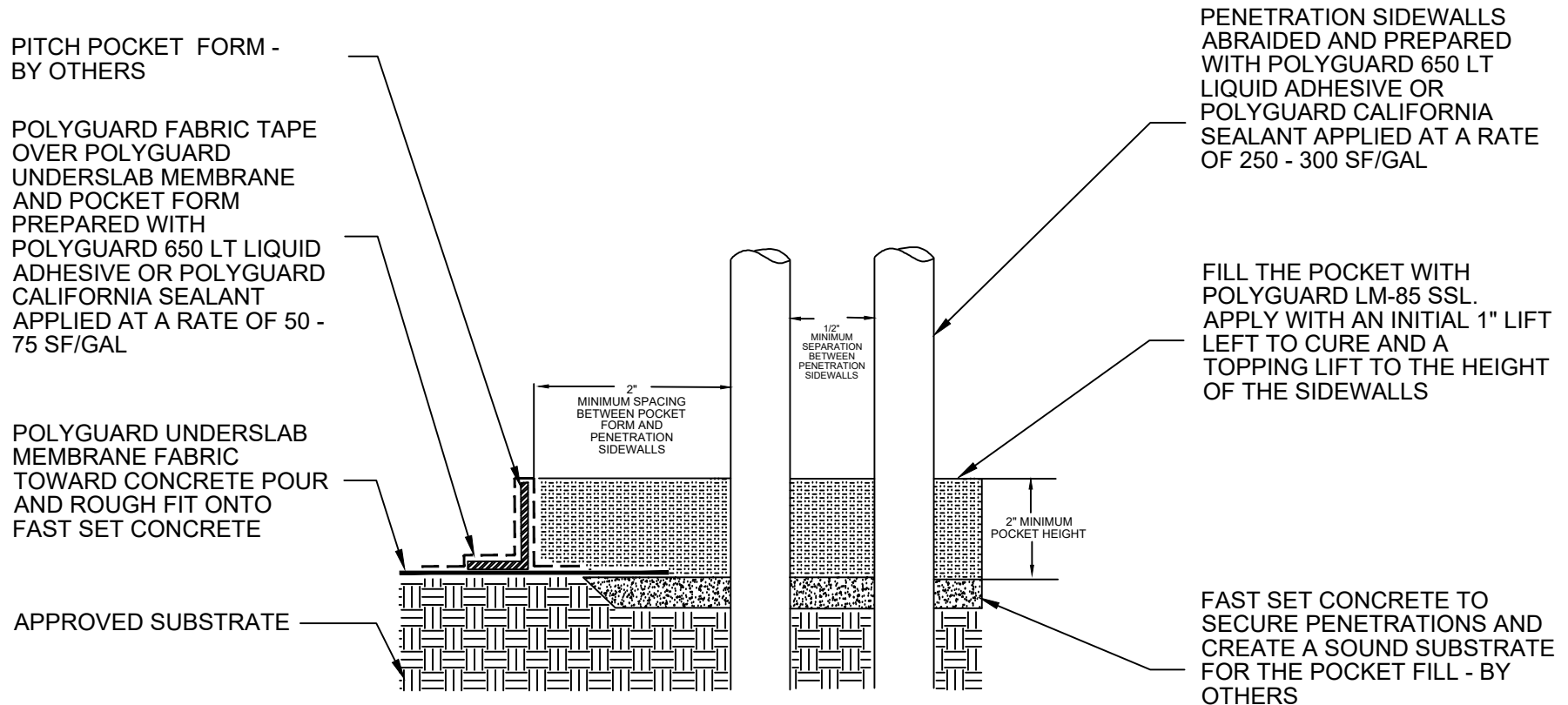
## SECTION @ PENETRATION DETAIL OPTIONS

Polyguard Products, Inc.  
P.O. Box 755 - Ennis, TX 75120  
Phone: 214-515-5000  
Web Site - [www.polyguard.com](http://www.polyguard.com)

©POLYGUARD PRODUCTS, INC.  
MATERIAL SEPARATED FOR CLARITY

The information provided is based on data and knowledge considered to be true and accurate and is offered for the users' consideration, investigation and verification, but we do not warrant the results to be obtained. Please read all data sheets, statements, recommendations or suggestions in conjunction with our conditions of sale, which apply to all goods supplied by us.	NOT TO SCALE
	EFFECTIVE DATE: 10/01/2022
	SUPERCEDES: 02/01/2022





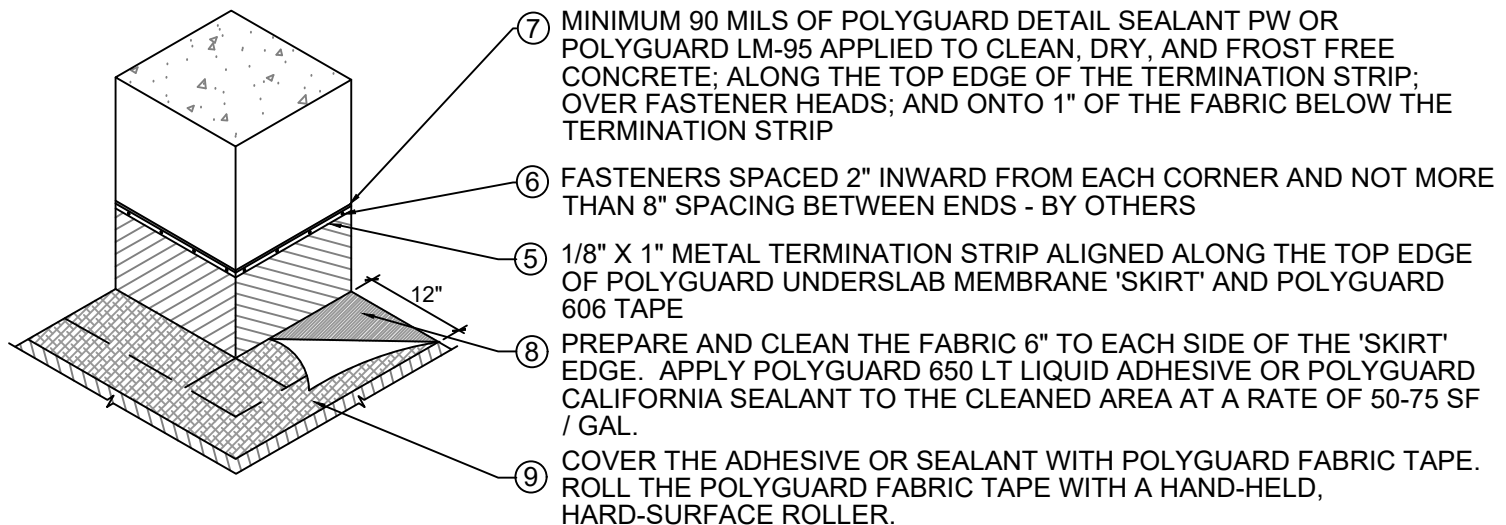
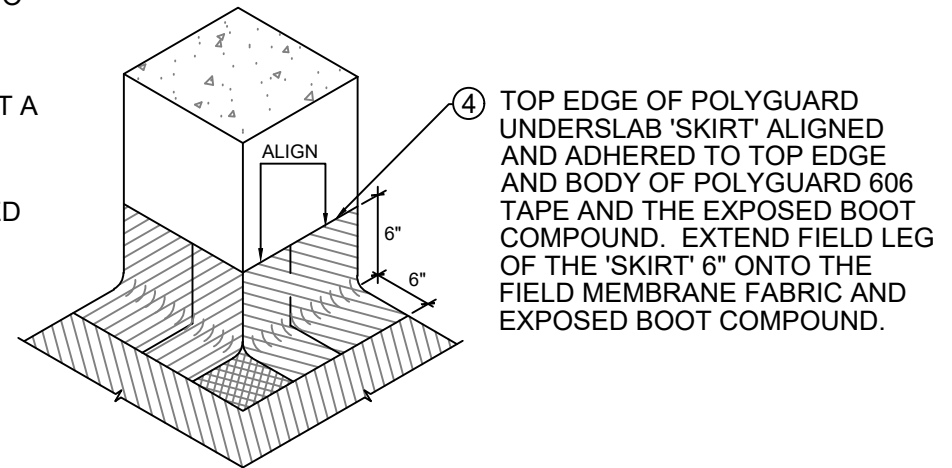
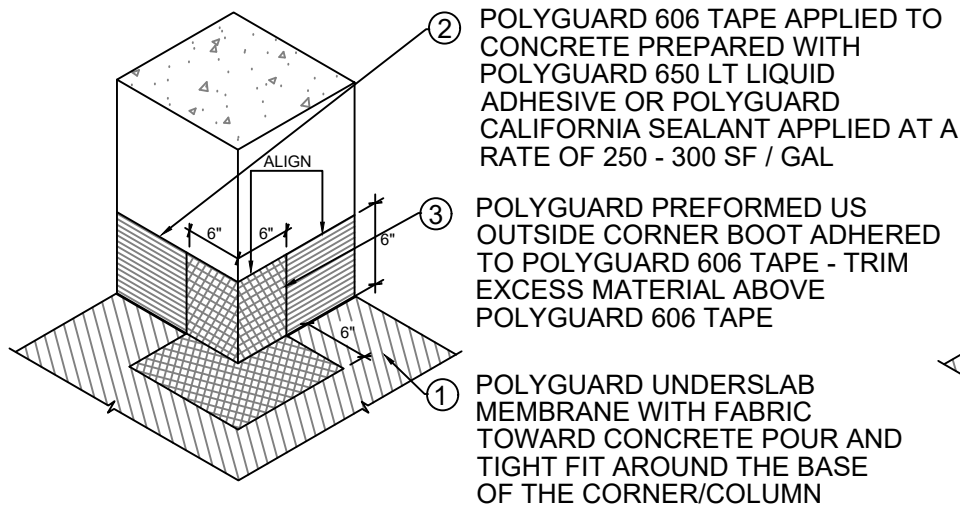
US16

## SECTION@ HORIZONTAL PITCH POCKET

Polyguard Products, Inc.  
P.O. Box 755 - Ennis, TX 75120  
Phone: 214-515-5000  
Web Site - [www.polyguard.com](http://www.polyguard.com)

©POLYGUARD PRODUCTS, INC.  
MATERIAL SEPARATED FOR CLARITY

The information provided is based on data and knowledge considered to be true and accurate and is offered for the users' consideration, investigation and verification, but we do not warrant the results to be obtained. Please read all data sheets, statements, recommendations or suggestions in conjunction with our conditions of sale, which apply to all goods supplied by us.	NOT TO SCALE
	EFFECTIVE DATE: 10/01/2022
	SUPERCEDES: 05/05/2022



US17

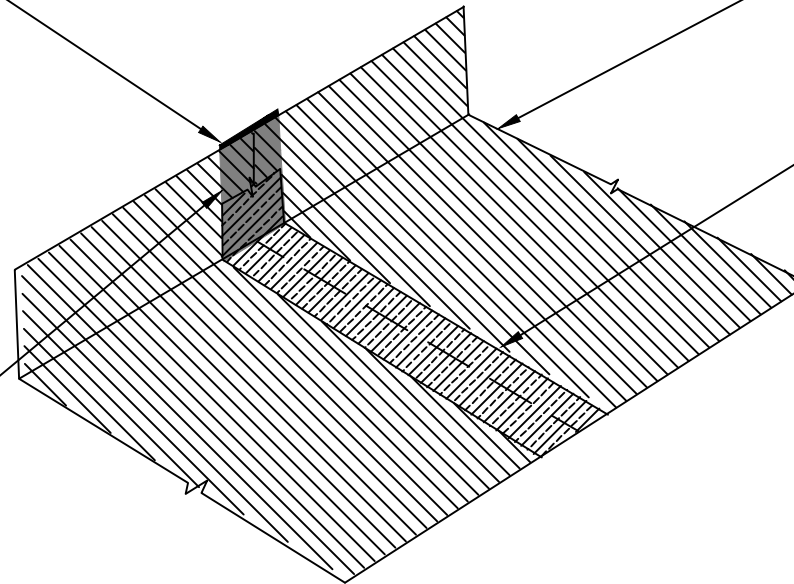
## PREFORMED US OUTSIDE CORNER BOOT AT CONCRETE COLUMN

POLYGUARD DETAIL TAPE PLACED WITH ASPHALT INTERFACING CLEAN AND DRY HDPE SIDE OF POLYGUARD UNDERSLAB MEMBRANE - COVERAGE ONLY REQUIRED ON THE VERTICAL SEGMENT

POLYGUARD UNDERSLAB MEMBRANE FABRIC TOWARD CONCRETE POUR - APPROVED SUBSTRATE NOT SHOWN

REFERENCE POLYGUARD END LAP SEAM DETAIL

END LAP SEAM - POLYGUARD FABRIC TAPE OMITTED FROM THE DRAWING IN THIS AREA FOR CLARITY



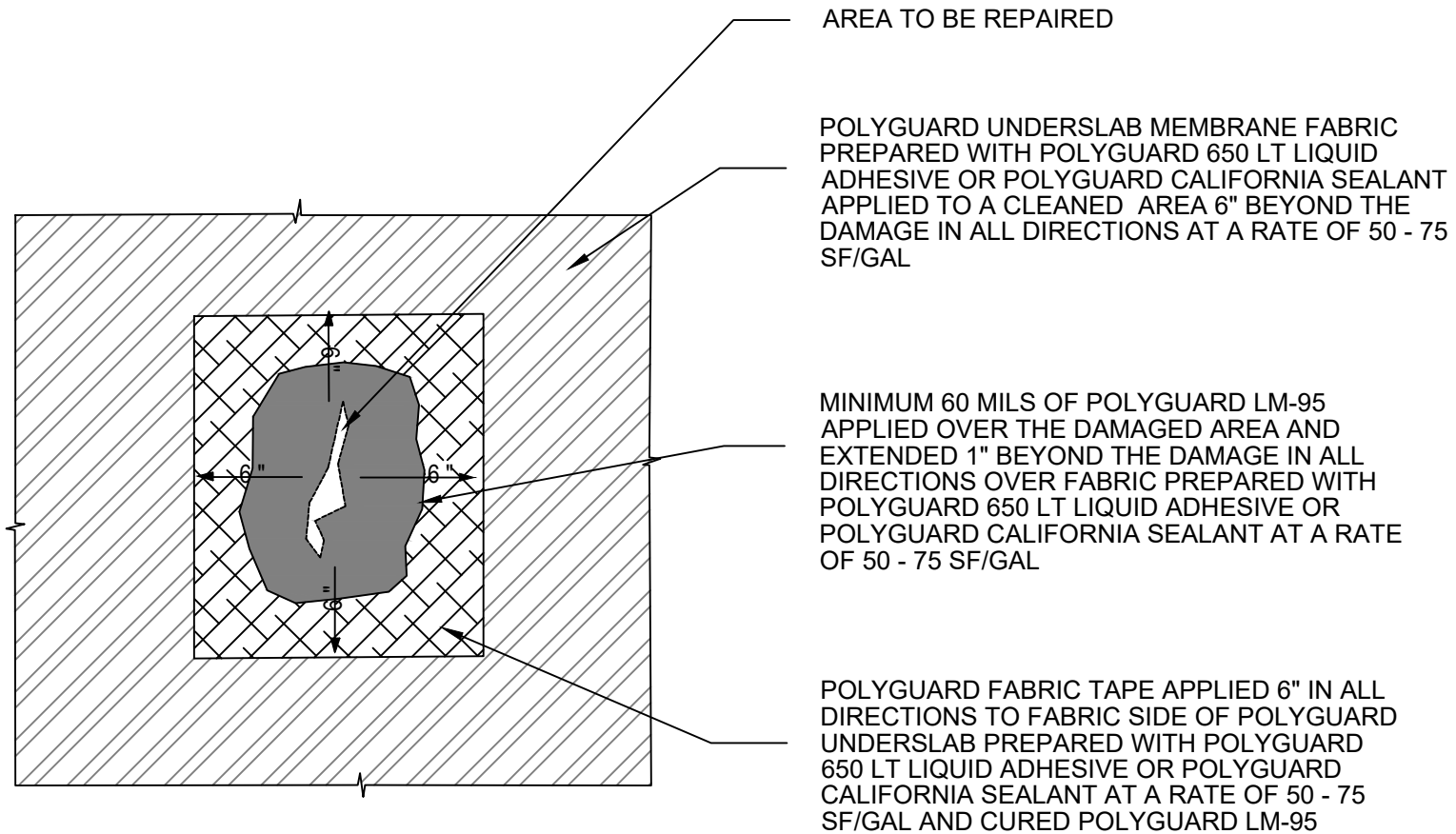
US18

SECTION @ PRE APPLIED SEAL OF VERTICAL LEG TURN UP AT ENDLAP

Polyguard Products, Inc.  
P.O. Box 755 - Ennis, TX 75120  
Phone: 214-515-5000  
Web Site - [www.polyguard.com](http://www.polyguard.com)

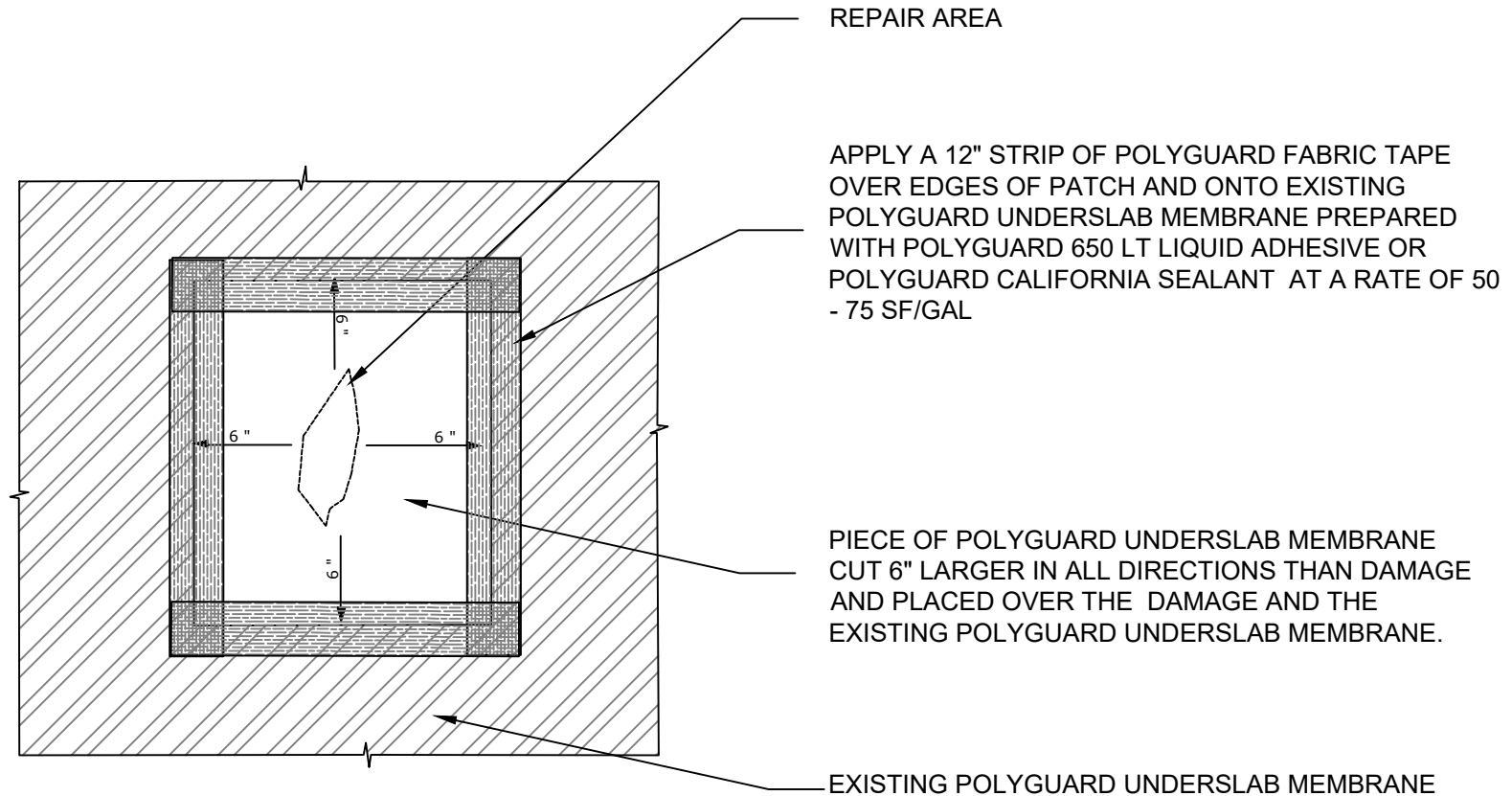
©POLYGUARD PRODUCTS, INC.  
MATERIAL SEPARATED FOR CLARITY

<small>The information provided is based on data and knowledge considered to be true and accurate and is offered for the users' consideration, investigation and verification, but we do not warrant the results to be obtained. Please read all data sheets, statements, recommendations or suggestions in conjunction with our conditions of sale, which apply to all goods supplied by us.</small>	NOT TO SCALE
	EFFECTIVE DATE: 10/01/2022
	SUPERCEDES: 02/01/2022



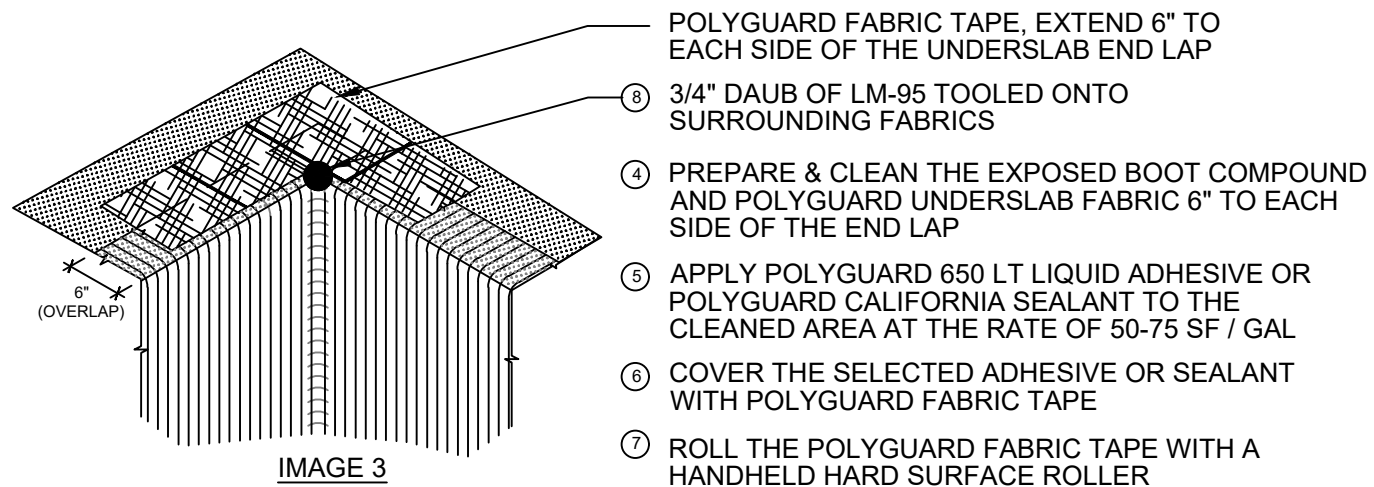
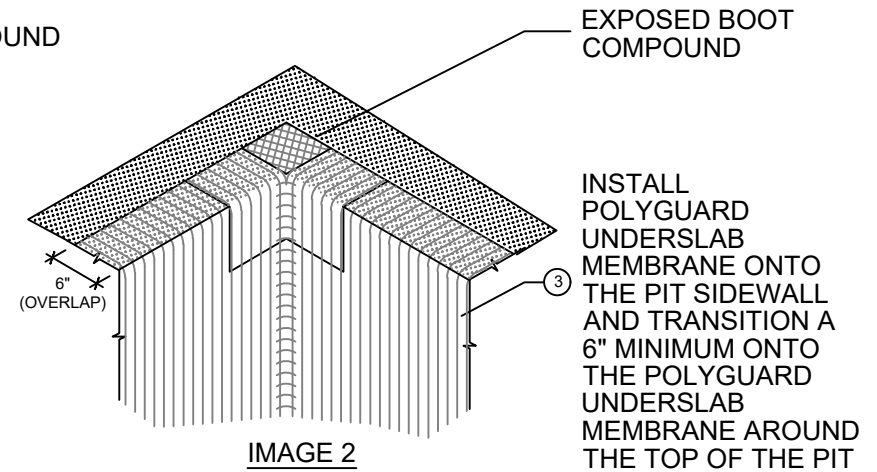
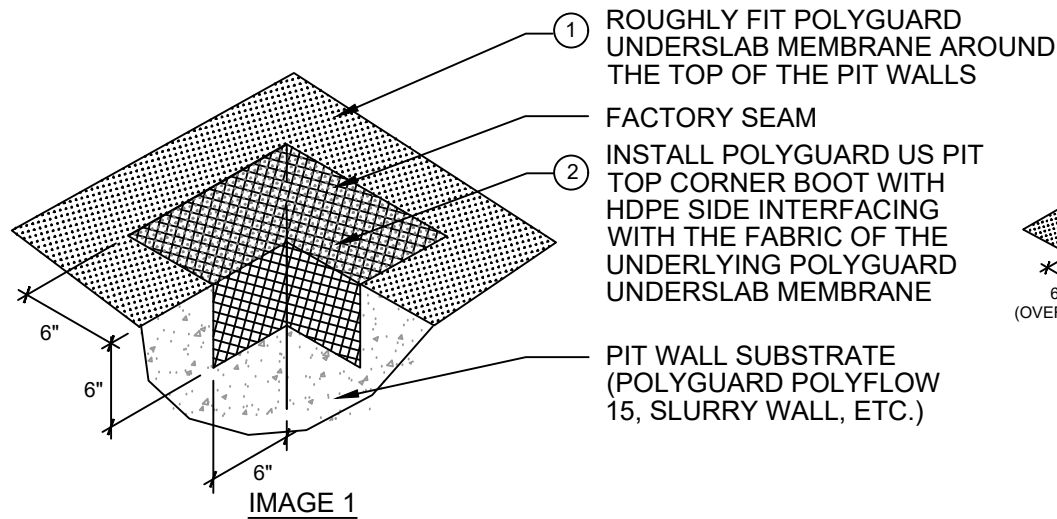
US19

OVERVIEW @ REPAIR PATCH LESS THAN 2 INCHES



US20

OVERVIEW @ REPAIR PATCH GREATER THAN 2 INCHES



US21

## OVERVIEW PIT SIDEWALL TRANSITION AT TOP OF WALL

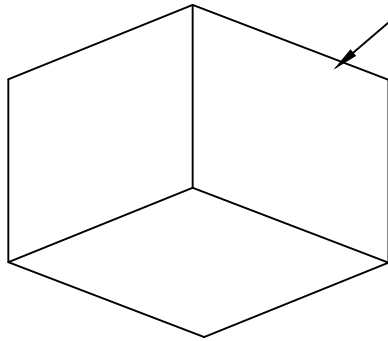


IMAGE 1

CORNERS CAN BE MADE IN FIELD OR PURCHASED PREFORMED BY POLYGUARD. TO MAKE A 12" X 12" BOOT USE A 24" X 24" PIECE OF POLYGUARD 650 MEMBRANE. FOR ADDITIONAL HEIGHT REQUIREMENT ADD POLYGUARD 650 MEMBRANE TO THE VERTICAL LEGS. (REFERENCE POLYGUARD US INSIDE CORNER DETAIL FOR COMPLETE INSTALLATION INSTRUCTION)

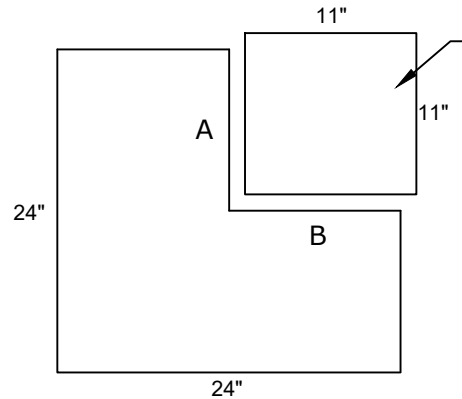


IMAGE 2

CUT AND REMOVE A SQUARE PIECE OF POLYGUARD 650 MEMBRANE FROM THE END CORNER. DIMENSION THE STARTING POINT OF EACH CUT FROM THE CORNER, AND ALONG AN EDGE, A DISTANCE EQUAL TO THE HEIGHT OF THE VERTICAL LEG OF THE BOOT. CUT INWARD FROM THE EDGE TO THIS DISTANCE AND DISCARD THE OFF FALL

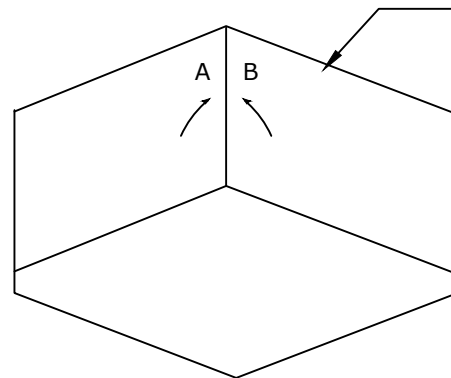


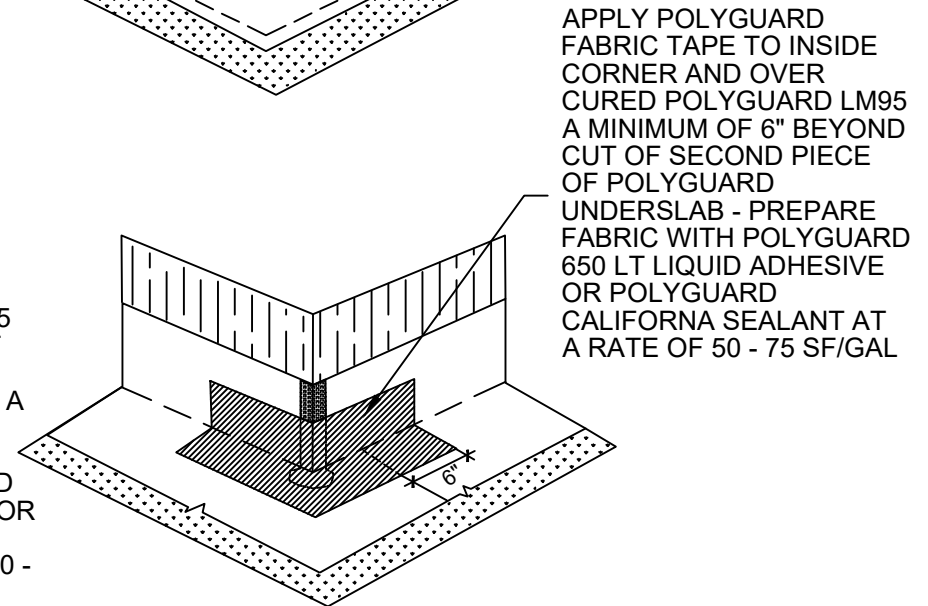
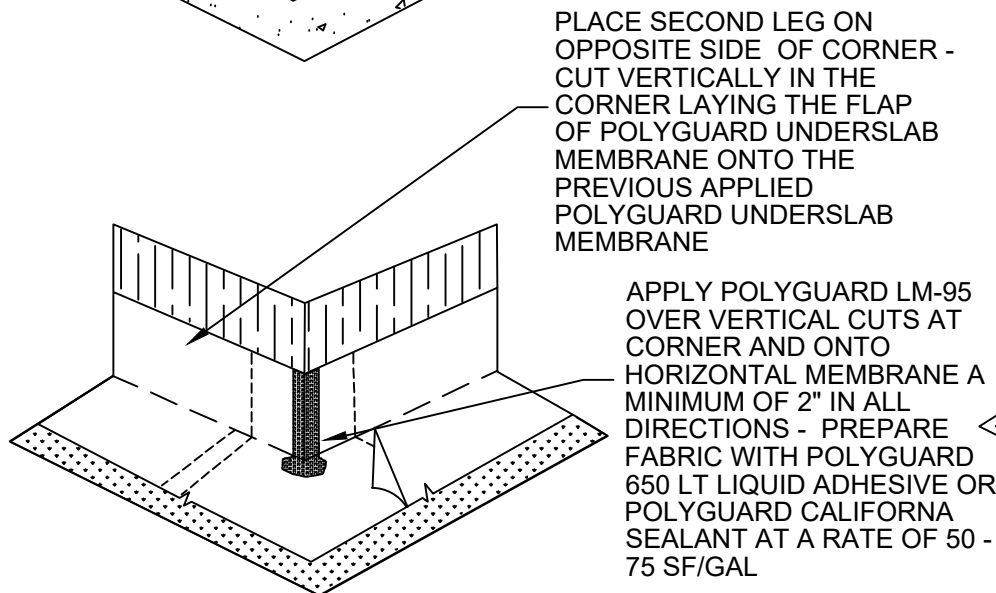
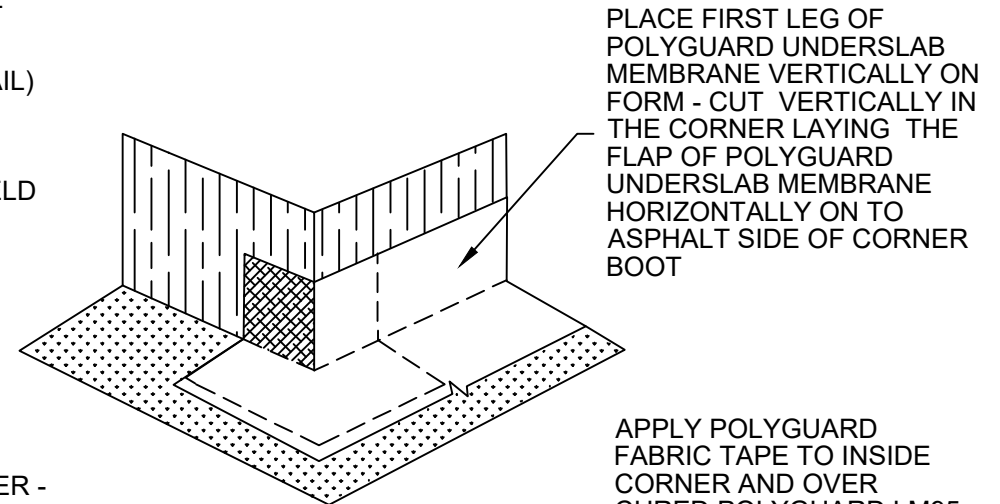
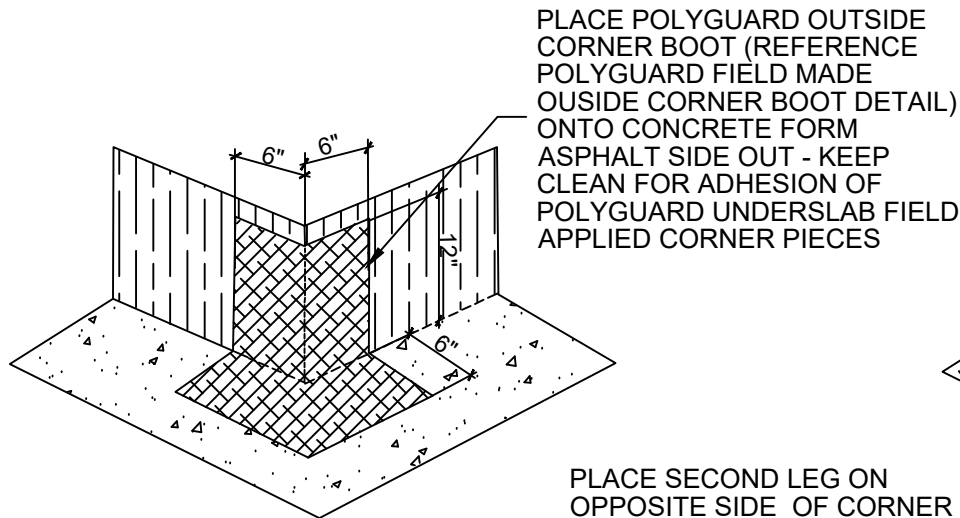
IMAGE 3

REMOVE 1 INCH OF THE FILM SO THE (A) AND (B) EDGES MEET IN THE VERTICAL LEG OF THE BOOT. ROLL SEAM WITH A ROLLER AND UNFOLD TO CREATE THE INSIDE CORNER BOOT

US22

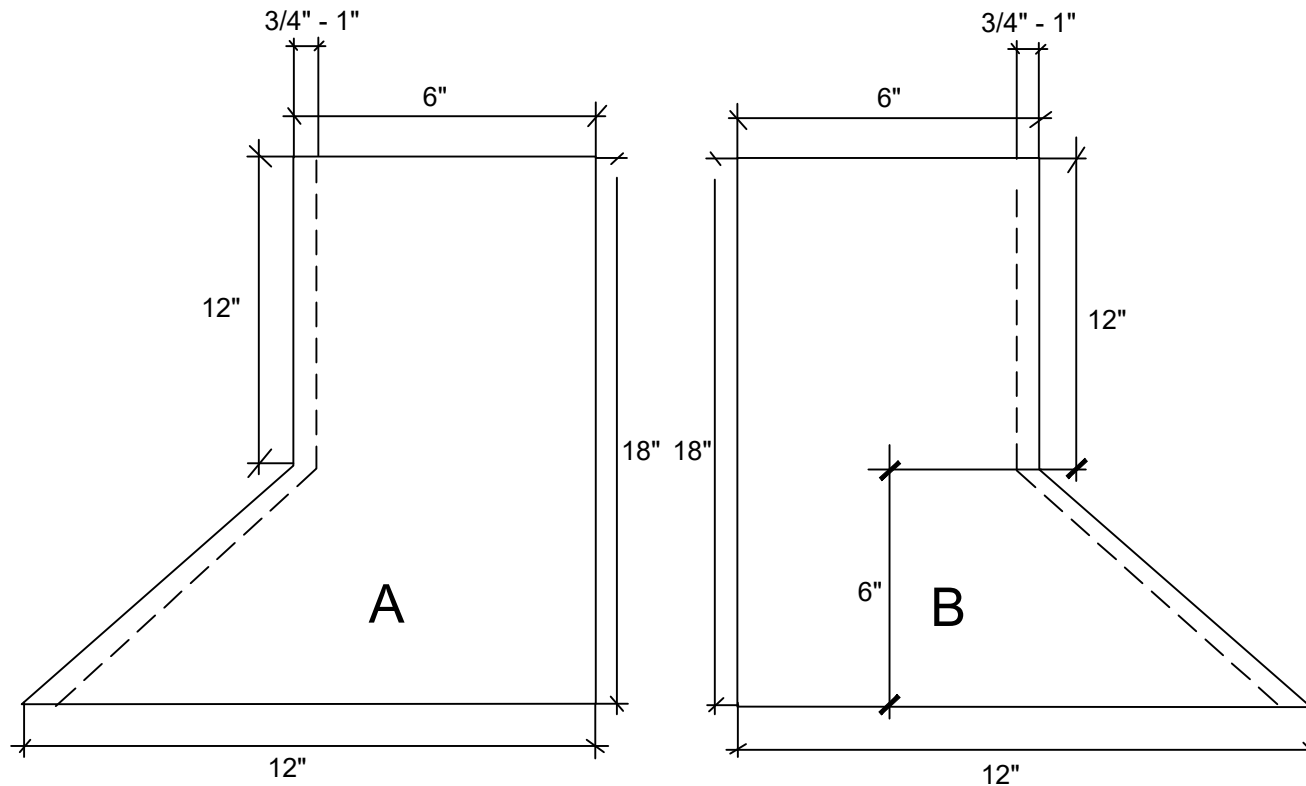
SECTION @ 650 MEMBRANE BOOT FOR US INSIDE CORNER





US23

SECTION @ OUTSIDE CORNER (FIELD CUT)



1. Cut 2 - 12" x 18" pieces of Polyguard 650 or Polyguard Balconyguard Membrane -  
A. (A) & (B) piece cut to dimensions above and mirror image
2. Score 3/4" - 1" release film at angled edge - remove the film
3. Adhere piece (A) and (B) at exposed 3/4" - 1" compound - roll tight

US24

SECTION @ FIELD MADE OUTSIDE CORNER BOOT

Polyguard Products, Inc.  
P.O. Box 755 - Ennis, TX 75120  
Phone: 214-515-5000  
Web Site - [www.polyguard.com](http://www.polyguard.com)

©POLYGUARD PRODUCTS, INC.  
MATERIAL SEPARATED FOR CLARITY

The information provided is based on data and knowledge considered to be true and accurate and is offered for the users' consideration, investigation and verification, but we do not warrant the results to be obtained. Please read all data sheets, statements, recommendations or suggestions in conjunction with our conditions of sale, which apply to all goods supplied by us.	NOT TO SCALE
	EFFECTIVE DATE: 10/01/2022
	SUPERCEDES: 02/01/2022