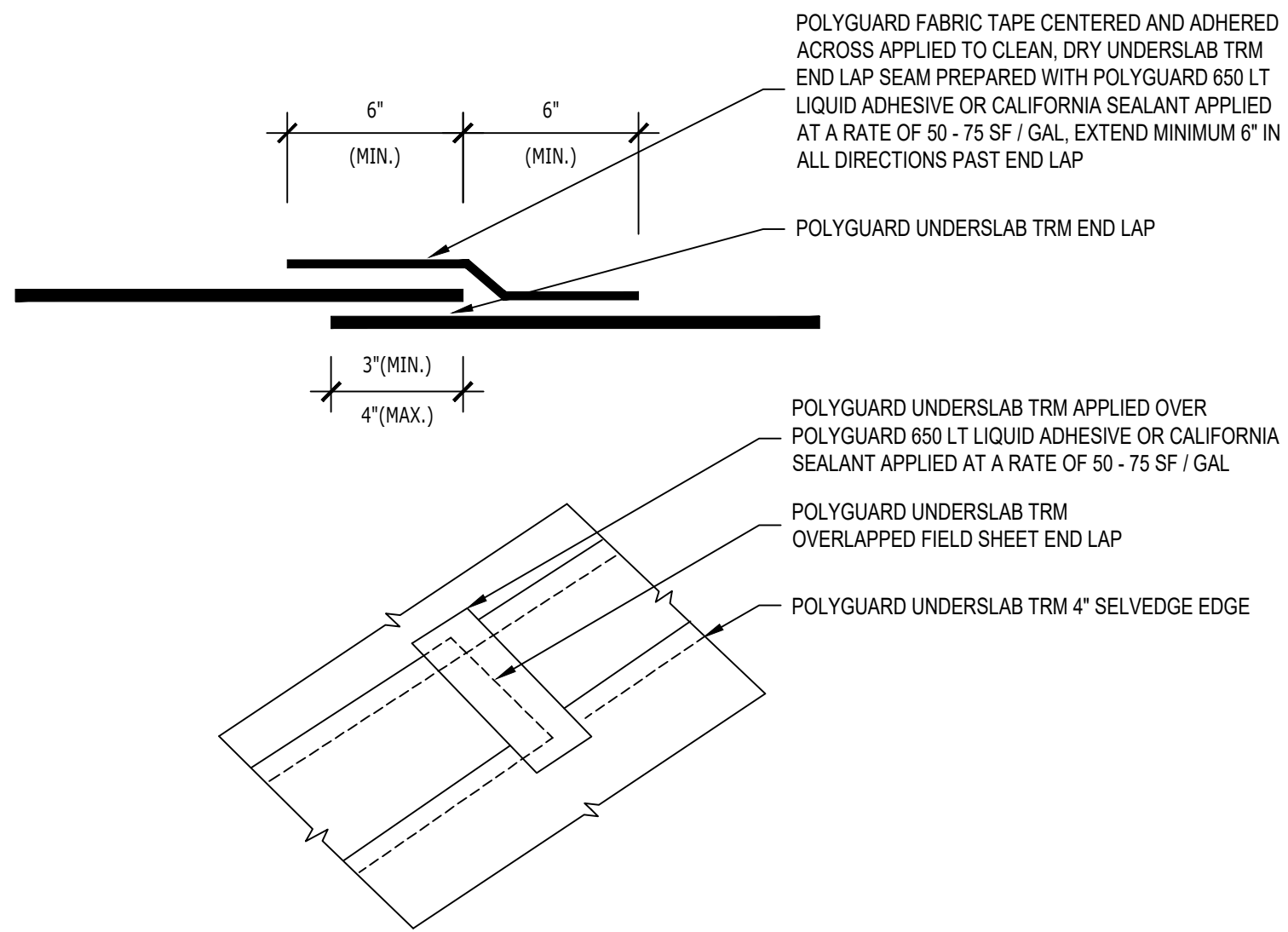


UST1 SECTION @ UNDERSLAB TRM - TIE-IN TO UNDERSLAB TRM BLINDSIDE

MATERIAL SEPARATED FOR CLARITY
© POLYGUARD PRODUCTS, INC.

| | |
|---|-------------------------------|
| <small>The information provided is based on data and knowledge considered to be true and accurate and is offered for the users' consideration, investigation and verification, but we do not warrant the results to be obtained. Please read all data sheets, statements, recommendations or suggestions in conjunction with our conditions of sale, which apply to all goods supplied by us.</small> | NOT TO SCALE |
| | EFFECTIVE DATE: 12/17/2024 |
| | SUPERCEDES: 12/05/2024 |

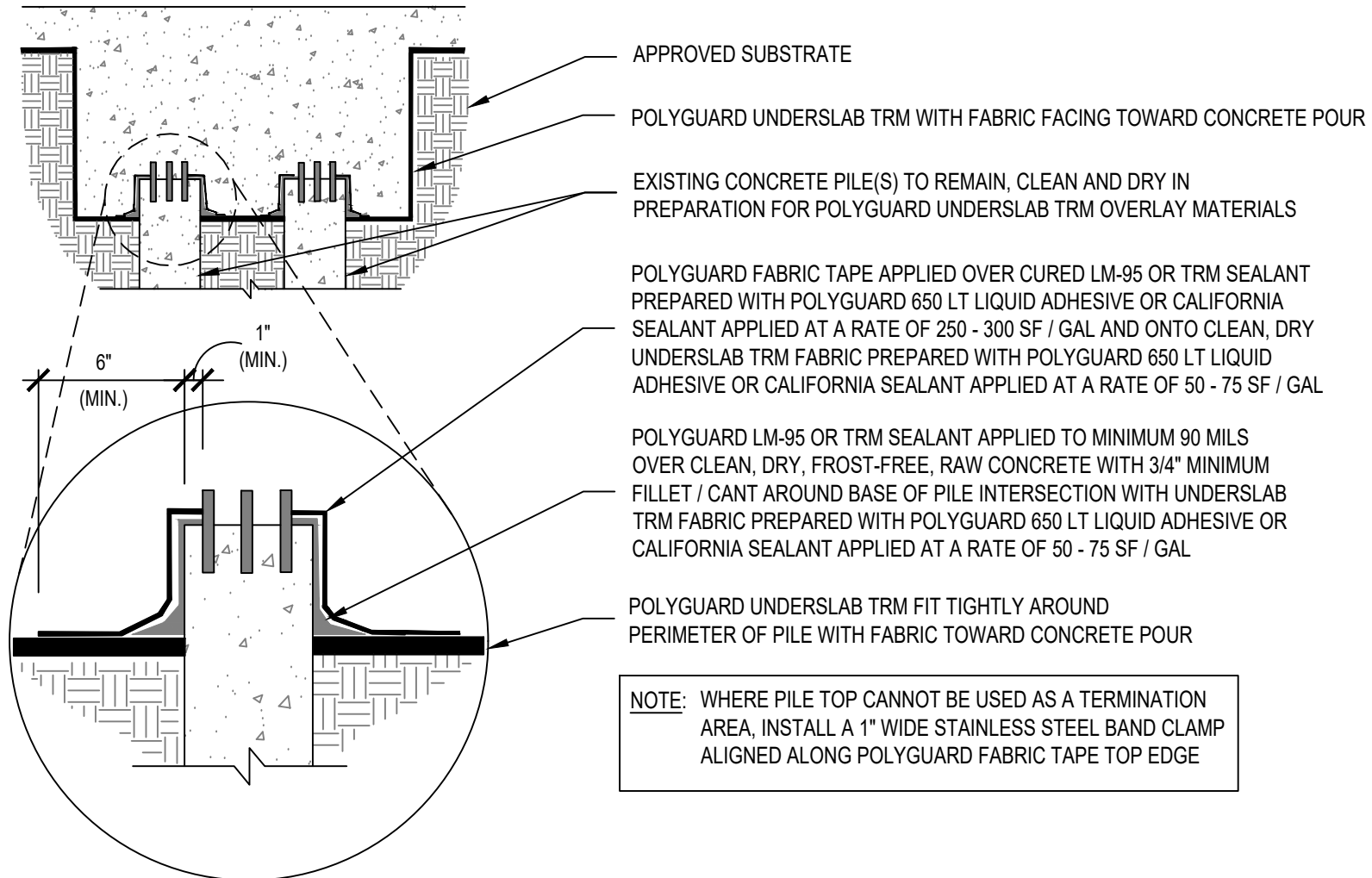


UST2 SECTION / ISOMETRIC @ UNDERSLAB TRM - END LAP

Polyguard Products, Inc.
P.O. Box 755 - Ennis, TX 75120
Phone: 214-515-5000
Web Site - www.polyguard.com

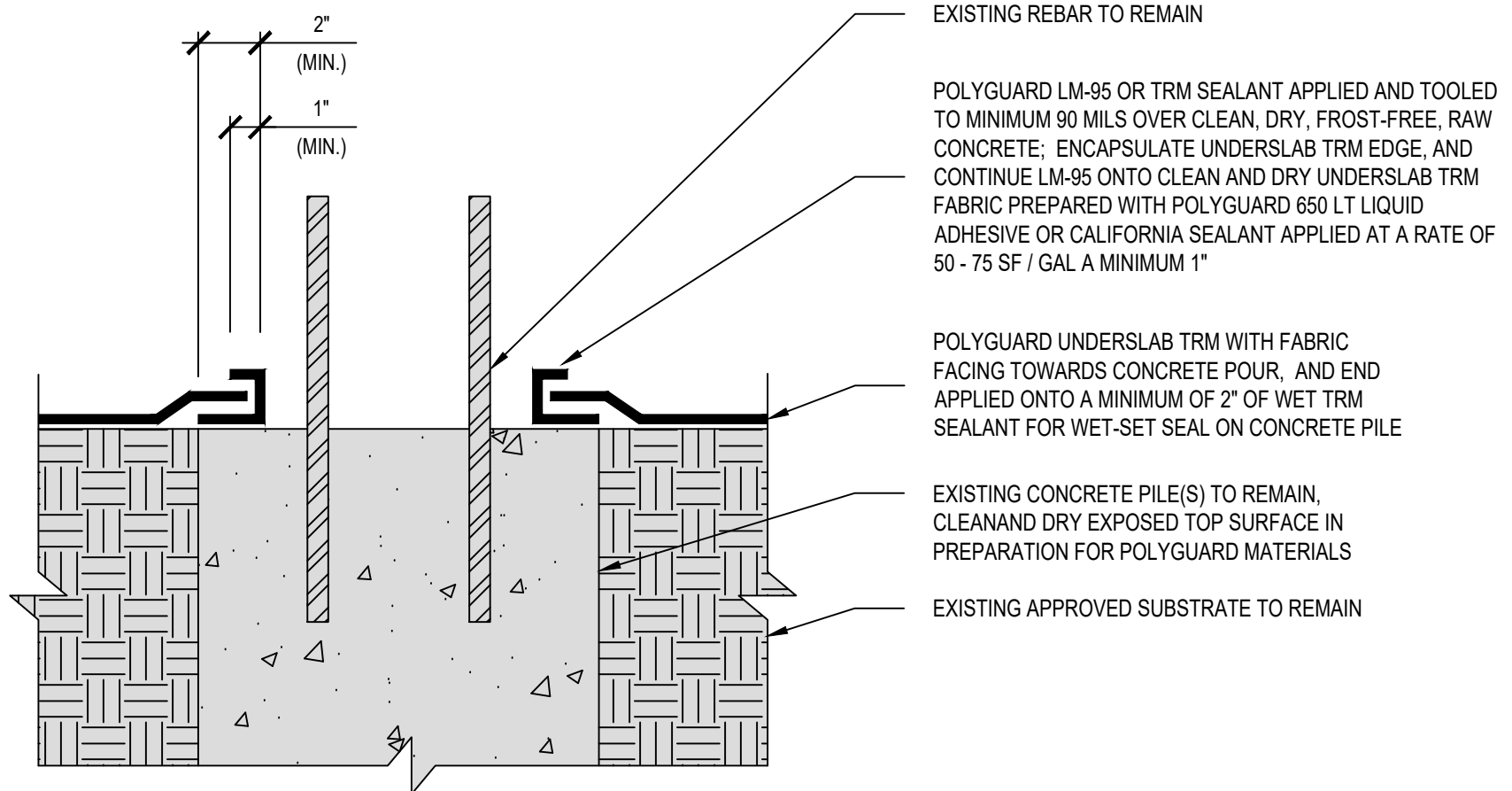
MATERIAL SEPARATED FOR CLARITY
© POLYGUARD PRODUCTS, INC.

| | |
|---|-------------------------------|
| <small>The information provided is based on data and knowledge considered to be true and accurate and is offered for the users' consideration, investigation and verification, but we do not warrant the results to be obtained. Please read all data sheets, statements, recommendations or suggestions in conjunction with our conditions of sale, which apply to all goods supplied by us.</small> | NOT TO SCALE |
| | EFFECTIVE DATE: 12/17/2024 |
| | SUPERCEDES: 12/05/2024 |



NOTE: WHERE PILE TOP CANNOT BE USED AS A TERMINATION AREA, INSTALL A 1" WIDE STAINLESS STEEL BAND CLAMP ALIGNED ALONG POLYGUARD FABRIC TAPE TOP EDGE

UST3 SECTION @ UNDERSLAB TRM - GRADE BEAM PILE CAP (PROFILE 1)

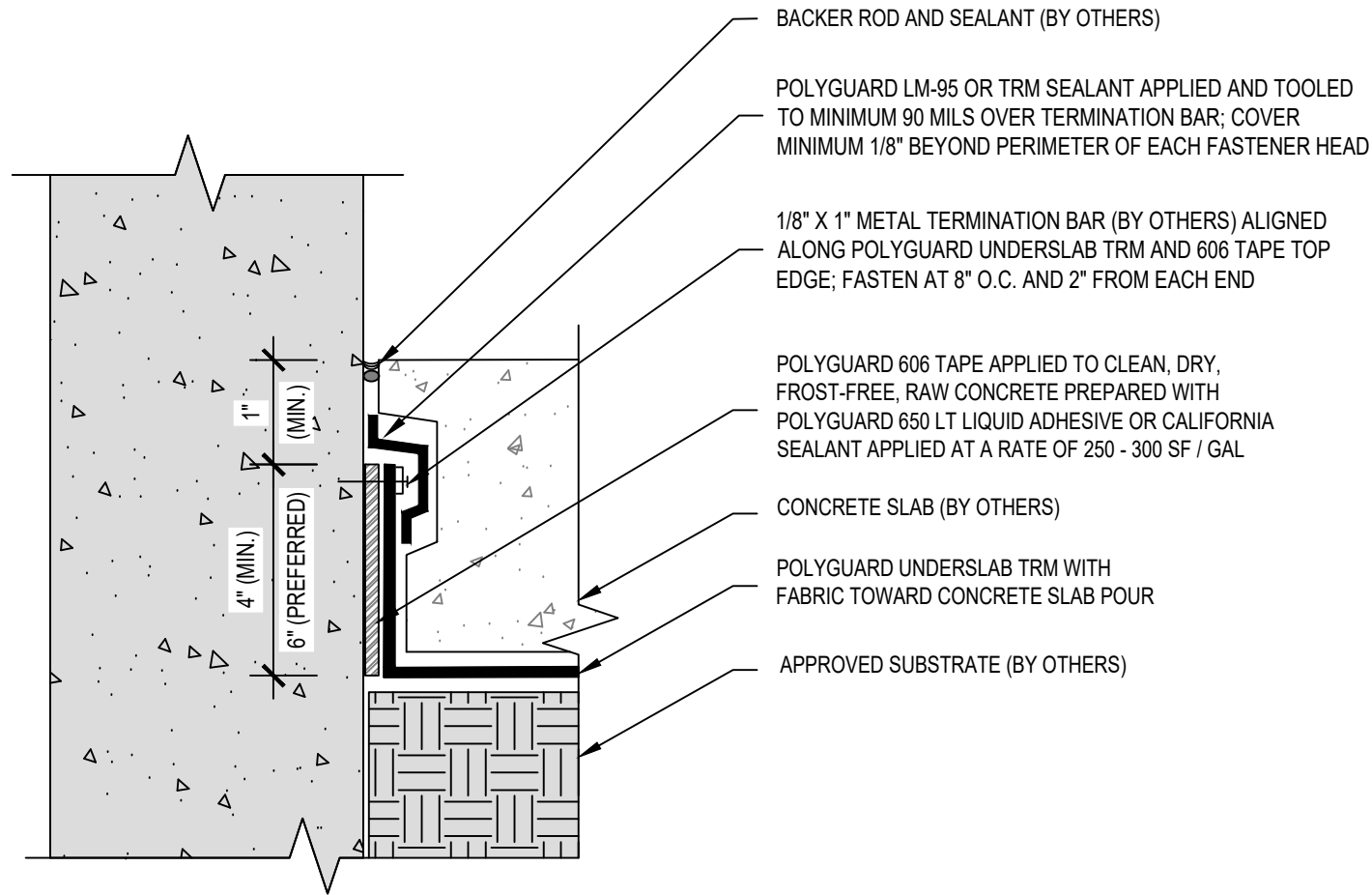


UST4 SECTION @ UNDERSLAB TRM - GRADE BEAM PILE CAP (PROFILE 2)

Polyguard Products, Inc.
P.O. Box 755 - Ennis, TX 75120
Phone: 214-515-5000
Web Site - www.polyguard.com

MATERIAL SEPARATED FOR CLARITY
© POLYGUARD PRODUCTS, INC.

| | |
|---|-------------------------------|
| <small>The information provided is based on data and knowledge considered to be true and accurate and is offered for the users' consideration, investigation and verification, but we do not warrant the results to be obtained. Please read all data sheets, statements, recommendations or suggestions in conjunction with our conditions of sale, which apply to all goods supplied by us.</small> | NOT TO SCALE |
| | EFFECTIVE DATE: 12/17/2024 |
| | SUPERCEDES: 12/05/2024 |

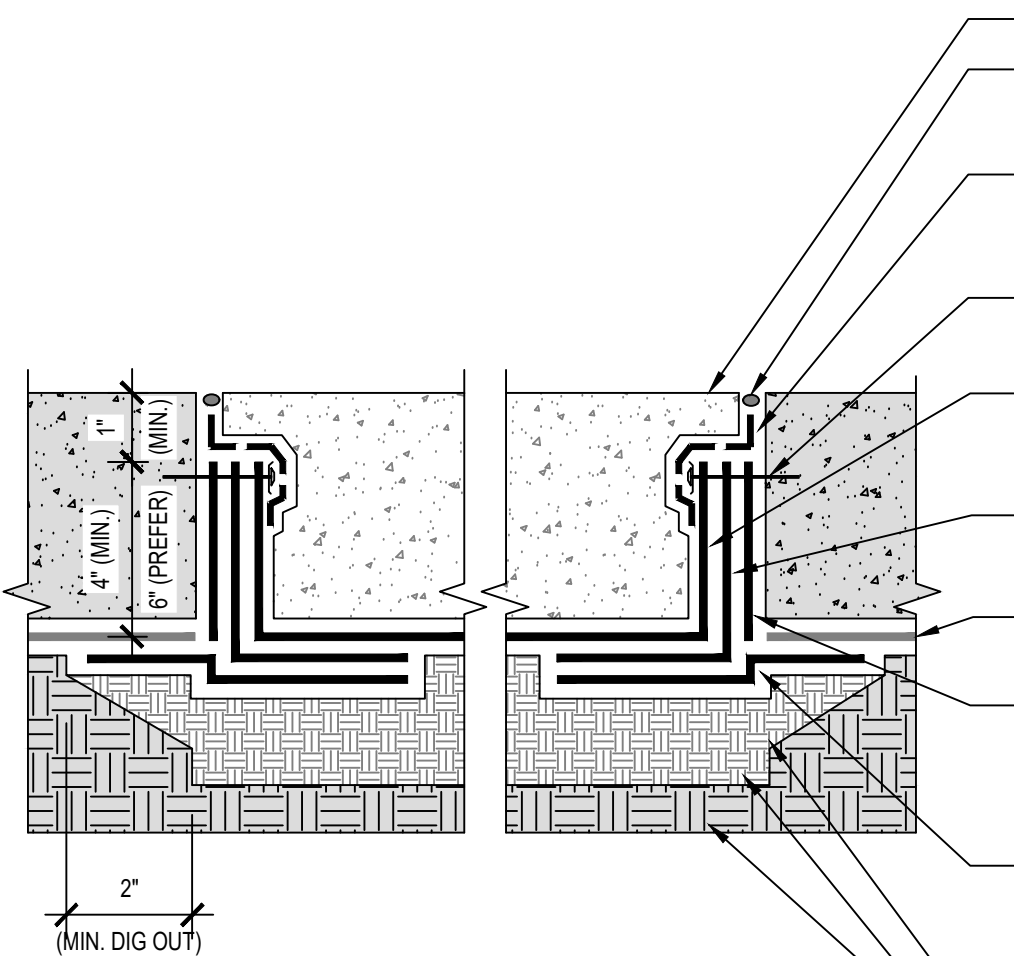


UST5 SECTION @ UNDERSLAB TRM - VERTICAL TERMINATION TO EXISTING CONCRETE FOUNDATION WALL

Polyguard Products, Inc.
P.O. Box 755 - Ennis, TX 75120
Phone: 214-515-5000
Web Site - www.polyguard.com

MATERIAL SEPARATED FOR CLARITY
© POLYGUARD PRODUCTS, INC.

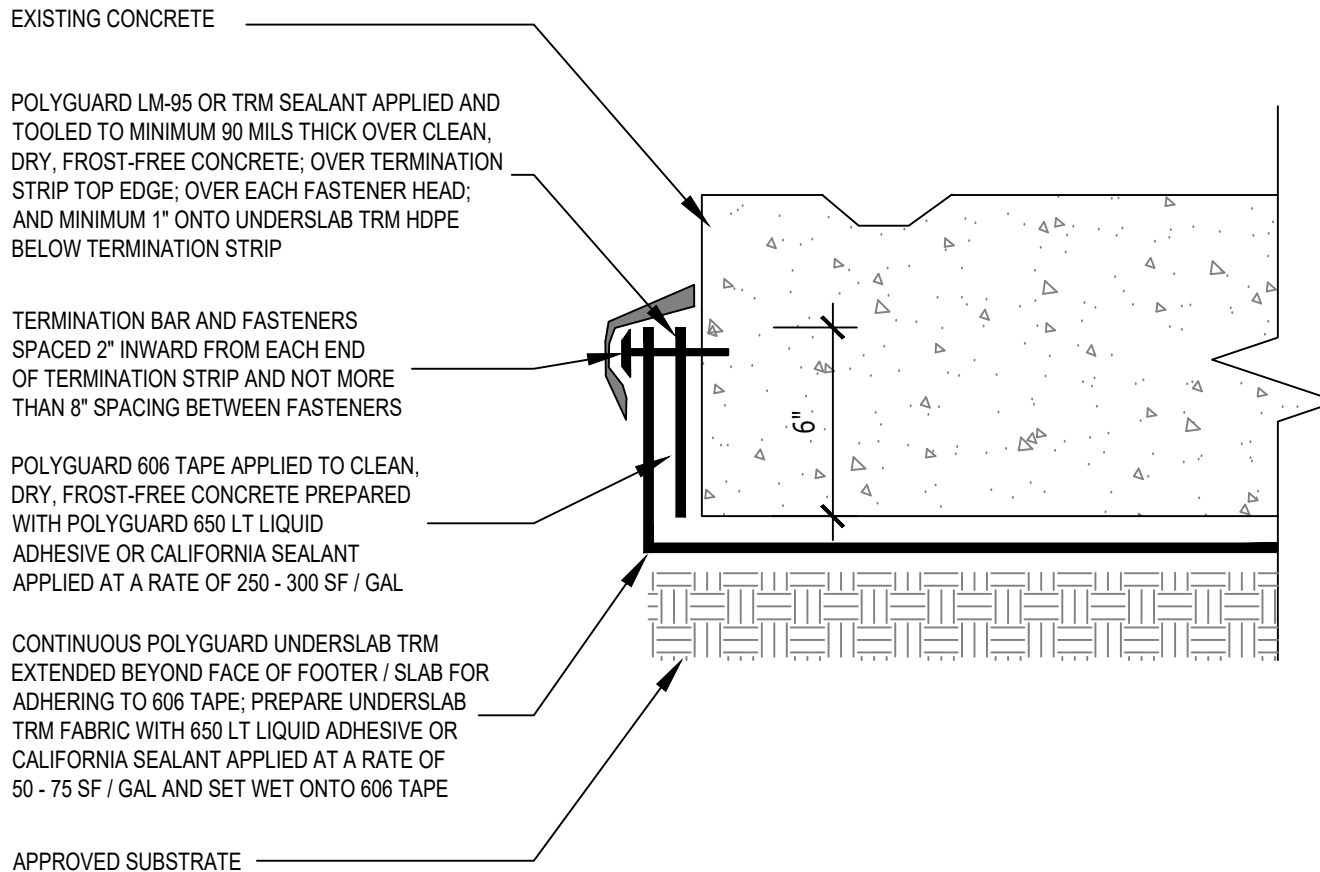
| | |
|---|-------------------------------|
| <small>The information provided is based on data and knowledge considered to be true and accurate and is offered for the users' consideration, investigation and verification, but we do not warrant the results to be obtained. Please read all data sheets, statements, recommendations or suggestions in conjunction with our conditions of sale, which apply to all goods supplied by us.</small> | NOT TO SCALE |
| | EFFECTIVE DATE: 12/17/2024 |
| | SUPERCEDES: 12/05/2024 |



- REPLACEMENT CONCRETE
- SEAL ALL CROSS SAW CUTS WITH INJECTABLE MATERIAL (BY OTHERS)
- POLYGUARD LM-95 OR TRM SEALANT APPLIED OVER CLEAN, DRY, FROST-FREE EXISTING CONCRETE SLAB; OVER AND ALONG TERMINATION BAR TOP EDGE; OVER EACH TERMINATION BAR FASTENER HEAD; AND ONTO MINIMUM 1" OF POLYGUARD UNDERSLAB TRM FABRIC BELOW TERMINATION BAR PREPARED WITH POLYGUARD 650 LT LIQUID ADHESIVE OR CALIFORNIA SEALANT APPLIED AT A RATE OF 50 - 75 SF / GAL
- 1/8" X 1" METAL TERMINATION BAR WITH FASTENERS (BY OTHERS) SPACED 2" INWARD FROM EACH END OF TERMINATION BAR AND NOT MORE THAN 8" SPACING BETWEEN FASTENERS
- NEW PIECE OF POLYGUARD UNDERSLAB TRM ON BOTTOM OF TRENCH; ADHERE FILM SIDE VERTICALLY TO POLYGUARD 606 TAPE AND TO CORNER BOOT IN CORNERS (SHOWN)
- PLACE POLYGUARD US INSIDE CORNER BOOT HORIZONTAL LEG ONTO ASPHALT SIDE OF CLEAN AND DRY POLYGUARD TERM FOUNDATION WATER / TERMITE BARRIER AND INTO CORNER FOR BOND WITH 606 TAPE; REFERENCE POLYGUARD TRM STANDARD DETAILS (TU20) AND (TU21) FOR FIELD-FABRICATE OPTION DIRECTIONS ON INSIDE CORNER
- EXISTING POLYGUARD UNDERSLAB TRM TO REMAIN
- POLYGUARD 606 TAPE APPLIED TO CLEAN, DRY, FROST-FREE EXISTING CONCRETE SLAB SIDE WALL OF TRENCH PREPARED WITH POLYGUARD 650 LT LIQUID ADHESIVE OR CALIFORNIA SEALANT APPLIED AT A RATE OF 250 -300 SF / GAL
- POLYGUARD 650 TRM 12" PIECE APPLIED TO EXISTING UNDERSLAB TRM CLEANED FILM SIDE, LEAVING FILM ON EXPOSED SIDE OF 650 TRM; THEN ANCHOR TO SIDE OF TRENCH TO PROTECT 650 TRM FROM BACKFILLING DAMAGE. ONCE BACKFILLED, LAY TAPED PIECE TO BOTTOM OF TRENCH AND REMOVE FILM FOR ADHESION OF POLYGUARD BOOT AND POLYGUARD UNDERSLAB TRM
- DIG OUT AND EXPOSE EXISTING POLYGUARD UNDERSLAB TRM FOR ENTIRE TRENCH PERIMETER A MINIMUM 2" PAST ALL SAW CUTS
- APPROVED SUBSTRATES

UST6 SECTION @ UNDERSLAB TRM - SAW CUT THROUGH EXISTING MEMBRANE

| | |
|--|-------------------------------|
| The information provided is based on data and knowledge considered to be true and accurate and is offered for the users' consideration, investigation and verification, but we do not warrant the results to be obtained. Please read all data sheets, statements, recommendations or suggestions in conjunction with our conditions of sale, which apply to all goods supplied by us. | NOT TO SCALE |
| | EFFECTIVE DATE: 12/17/2024 |
| | SUPERCEDES: 12/05/2024 |



UST7 SECTION @ UNDERSLAB TRM - POST-CONCRETE-POUR TERMINATION TO FOOTER / STRUCTURAL SLAB

Polyguard Products, Inc.
P.O. Box 755 - Ennis, TX 75120
Phone: 214-515-5000
Web Site - www.polyguard.com

MATERIAL SEPARATED FOR CLARITY
© POLYGUARD PRODUCTS, INC.

| | |
|---|-------------------------------|
| <small>The information provided is based on data and knowledge considered to be true and accurate and is offered for the users' consideration, investigation and verification, but we do not warrant the results to be obtained. Please read all data sheets, statements, recommendations or suggestions in conjunction with our conditions of sale, which apply to all goods supplied by us.</small> | NOT TO SCALE |
| | EFFECTIVE DATE: 12/17/2024 |
| | SUPERCEDES: 12/05/2024 |

POLYGUARD POLYFLOW 15 OR 15P SHEET-MOLDED DRAIN WITH FABRIC FACING BACKFILL / SOIL

POLYGUARD 650 TRM APPLIED TO CLEAN, DRY, FROST-FREE, RAW CONCRETE PREPARED WITH POLYGUARD 650 LT LIQUID ADHESIVE OR CALIFORNIA SEALANT APPLIED AT A RATE OF 250 - 300 SF / GAL, OR OVER 650 WB LIQUID ADHESIVE APPLIED AT A RATE OF 350 - 400 SF / GAL

POLYGUARD LM-95 OR DETAIL SEALANT PW APPLIED AND TOOLED ACROSS JOINT TO CONTINUOUS MINIMUM 90 MILS THICK; OR POLYGUARD DETAIL TAPE APPLIED TO CLEAN, DRY, FROST-FREE, RAW SUBSTRATE PREPARED WITH POLYGUARD 650 LT OR CALIFORNIA SEALANT APPLIED AT A RATE OF 250 - 300 SF / GAL, OR OVER 650 WB LIQUID ADHESIVE APPLIED AT A RATE OF 350 - 400 SF / GAL; EXTEND MINIMUM 2" TO EACH SIDE OF JOINT

POLYGUARD TOTALFLOW PERIMETER HIGH-CAPACITY, SHEET-MOLDED DRAINAGE WITH FABRIC FACING BACKFILL / SOIL

FASTENERS, MAXIMUM SPACING 1'-0" O.C. (BY OTHERS)

1/8" X 1" METAL TERMINATION BAR (BY OTHERS) ALIGNED ALONG TERM UNDERSLAB WATER / TERMITE BARRIER MEMBRANE AND 606 DOUBLE-SIDED TAPE TOP EDGE

POLYGUARD TRM SEALANT APPLIED AND TOOLED TO MINIMUM 90 MILS OVER CLEAN, DRY, FROST-FREE, RAW CONCRETE; TERMINATION BAR TOP EDGE; OVER EACH FASTENER HEAD; AND ONTO UNDERSLAB TRM FABRIC MINIMUM 1" BELOW TERMINATION BAR PREPARED WITH POLYGUARD 650 LT LIQUID ADHESIVE OR CALIFORNIA SEALANT APPLIED AT A RATE OF 50 - 75 SF / GAL

POLYGUARD LM-95 OR TRM SEALANT APPLIED AND TOOLED TO MINIMUM 90 MILS, EXTEND MINIMUM 1/2" TO EACH SIDE OF 650 TRM BOTTOM TERMINAL EDGE AS EDGE SEAL

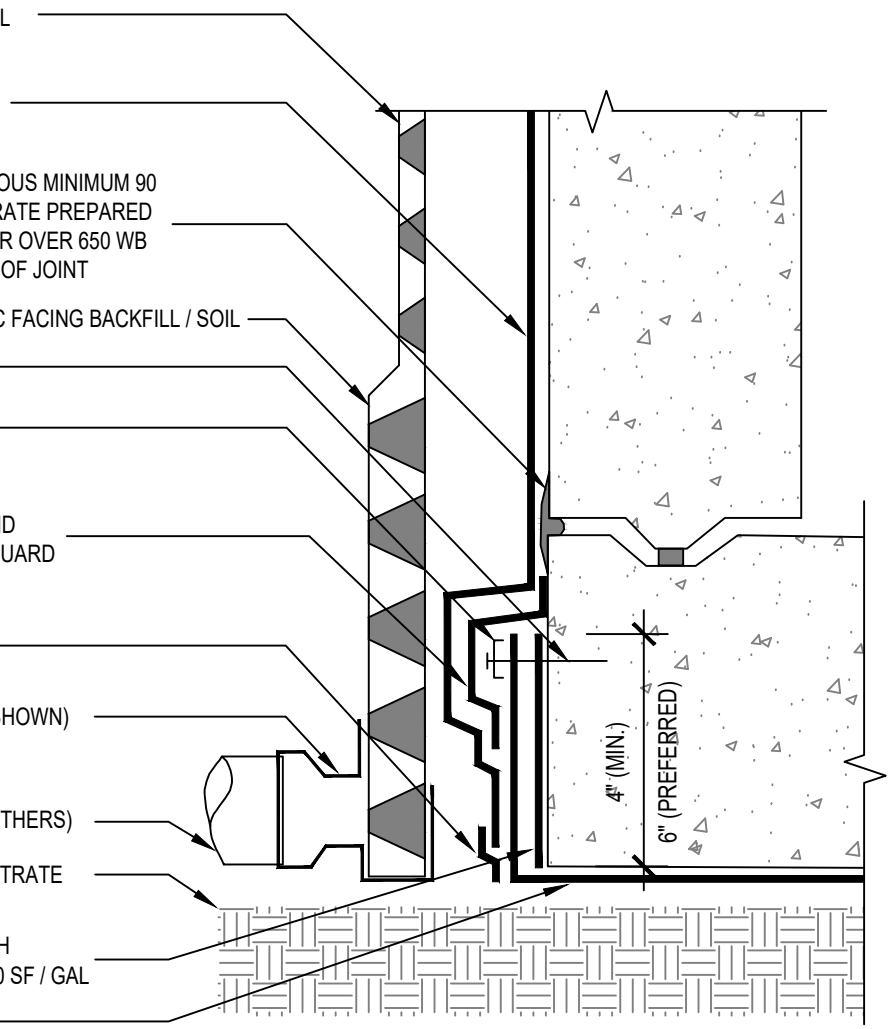
POLYGUARD TOTALFLOW END OUTLET & TEE OUTLET PIPE FITTINGS AVAILABLE (TEE OUTLET SHOWN)

DRAIN PIPE (BY OTHERS)

APPROVED SUBSTRATE

POLYGUARD 606 TAPE APPLIED TO CLEAN, DRY, FROST-FREE, RAW CONCRETE PREPARED WITH POLYGUARD 650 LT LIQUID ADHESIVE OR CALIFORNIA SEALANT APPLIED AT A RATE OF 250 - 300 SF / GAL

POLYGUARD UNDERSLAB TRM WITH FABRIC FACING CONCRETE SLAB POUR



UST8 SECTION @ UNDERSLAB TRM - TIE-IN TO 650 TRM AT FOOTER (PROFILE #1)

Polyguard Products, Inc.
P.O. Box 755 - Ennis, TX 75120
Phone: 214-515-5000
Web Site - www.polyguard.com

GENERAL NOTE: IF ADHESIVE IS REQUIRED FOR SEAMS OR END LAPS, DO NOT USE POLYGUARD 650 WB LIQUID ADHESIVE.

MATERIAL SEPARATED FOR CLARITY
© POLYGUARD PRODUCTS, INC.

| | |
|--|-------------------------------|
| The information provided is based on data and knowledge considered to be true and accurate and is offered for the users' consideration, investigation and verification, but we do not warrant the results to be obtained. Please read all data sheets, statements, recommendations or suggestions in conjunction with our conditions of sale, which apply to all goods supplied by us. | NOT TO SCALE |
| | EFFECTIVE DATE: 12/17/2024 |
| | SUPERCEDES: 12/05/2024 |

POLYGUARD POLYFLOW 15 OR 15P SHEET-MOLDED DRAIN WITH FABRIC FACING BACKFILL / SOIL

POLYGUARD LM-95 OR DETAIL SEALANT PW APPLIED AND TOOLED ACROSS JOINT TO CONTINUOUS MINIMUM 90 MILS THICK; OR POLYGUARD DETAIL TAPE APPLIED TO CLEAN, DRY, FROST-FREE, RAW SUBSTRATE PREPARED WITH POLYGUARD 650 LT LIQUID ADHESIVE OR CALIFORNIA SEALANT APPLIED AT A RATE OF 250 - 300 SF / GAL, OR OVER 650 WB LIQUID ADHESIVE APPLIED AT A RATE OF 350 - 400 SF / GAL; EXTEND MINIMUM 2" TO EACH SIDE OF JOINT

POLYGUARD TOTALFLOW PERIMETER HIGH-CAPACITY, SHEET-MOLDED DRAINAGE WITH FABRIC FACING BACKFILL / SOIL

POLYGUARD 650 TRM APPLIED TO CLEAN, DRY, FROST-FREE, RAW CONCRETE PREPARED WITH POLYGUARD 650 LT LIQUID ADHESIVE OR CALIFORNIA SEALANT APPLIED AT A RATE OF 250 - 300 SF / GAL, OR OVER 650 WB LIQUID ADHESIVE APPLIED AT A RATE OF 350 - 400 SF / GAL; PROVIDE MINIMUM 6" LAP OVER CLEAN AND DRY POLYGUARD UNDERSLAB TRM EMBEDDED EDGE PREPARED WITH POLYGUARD 650 LT LIQUID ADHESIVE OR CALIFORNIA SEALANT APPLIED AT A RATE OF 250 - 300 SF / GAL

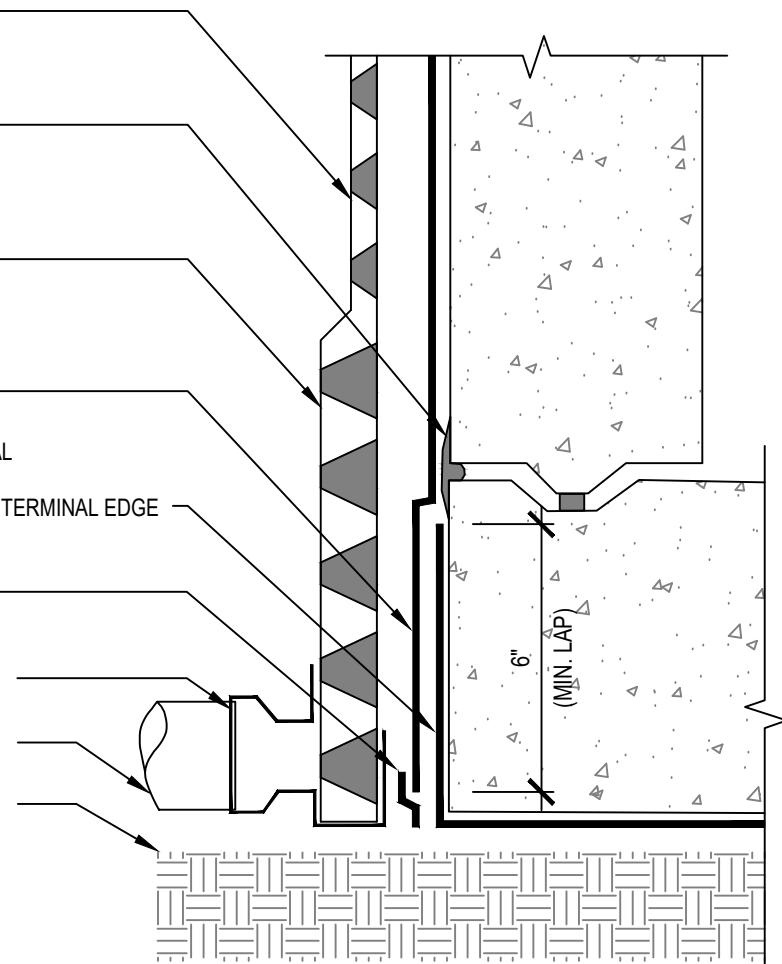
POLYGUARD UNDERSLAB TRM WITH FABRIC FACING CONCRETE SLAB POUR; PROVIDE EMBEDDED TOP TERMINAL EDGE

POLYGUARD LM-95, DETAIL SEALANT PW, OR TRM SEALANT APPLIED AND TOOLED TO MINIMUM 90 MILS, EXTEND MINIMUM 1/2" TO EACH SIDE OF 650 TRM BOTTOM TERMINAL EDGE AS EDGE SEAL

POLYGUARD TOTALFLOW END OUTLET & TEE OUTLET PIPE FITTINGS AVAILABLE (TEE OUTLET SHOWN)

DRAIN PIPE (BY OTHERS)

APPROVED SUBSTRATE



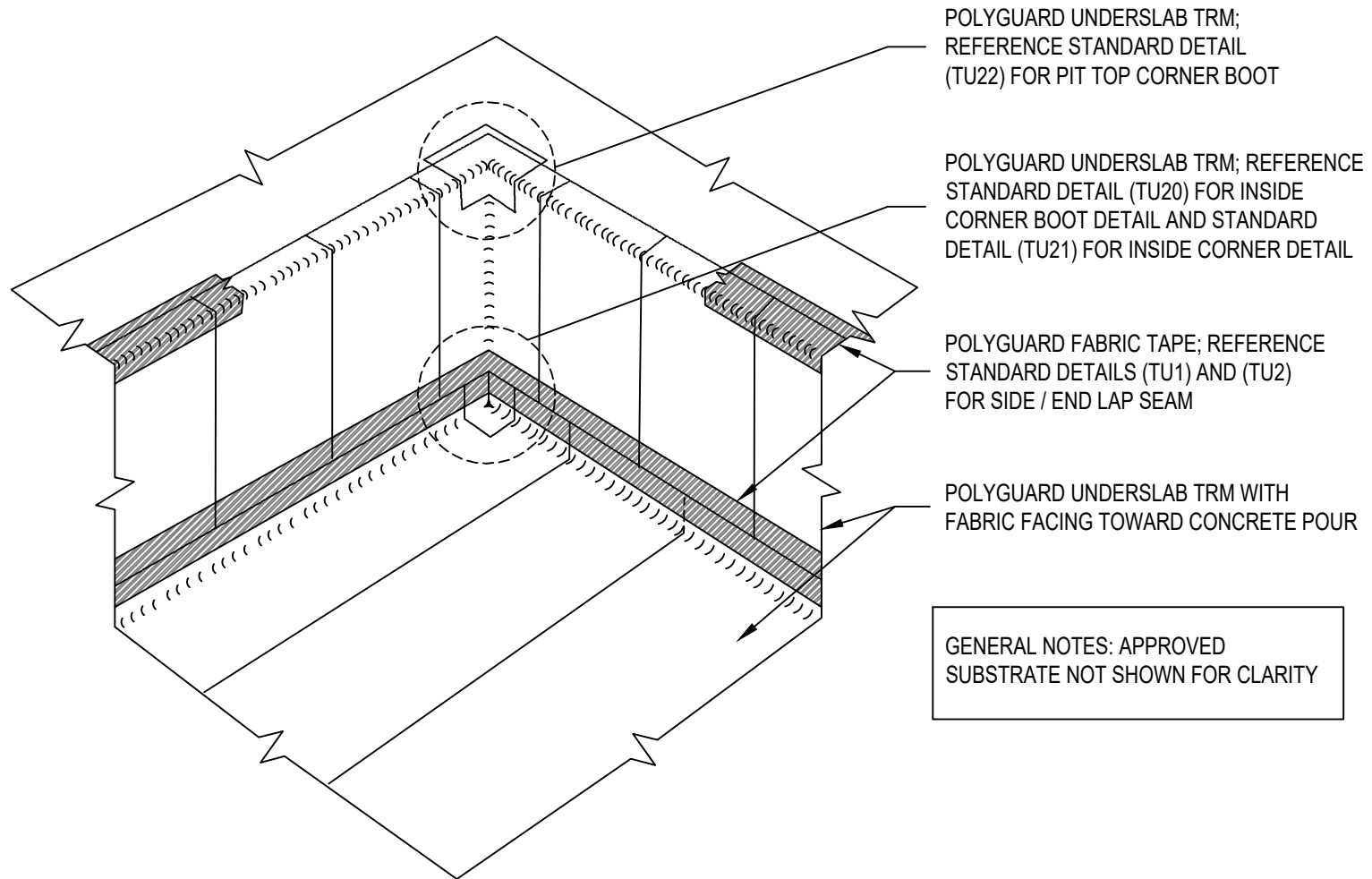
UST9 SECTION @ UNDERSLAB TRM - TIE-IN TO 650 TRM AT FOOTER (PROFILE #2)

Polyguard Products, Inc.
P.O. Box 755 - Ennis, TX 75120
Phone: 214-515-5000
Web Site - www.polyguard.com

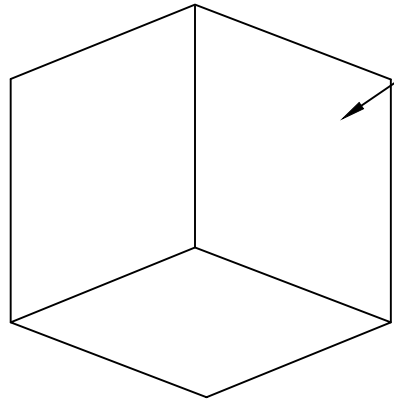
GENERAL NOTE: IF ADHESIVE IS REQUIRED FOR SEAMS OR END LAPS, DO NOT USE POLYGUARD 650 WB LIQUID ADHESIVE.

MATERIAL SEPARATED FOR CLARITY
© POLYGUARD PRODUCTS, INC.

| | |
|---|-------------------------------|
| <small>The information provided is based on data and knowledge considered to be true and accurate and is offered for the users' consideration, investigation and verification, but we do not warrant the results to be obtained. Please read all data sheets, statements, recommendations or suggestions in conjunction with our conditions of sale, which apply to all goods supplied by us.</small> | NOT TO SCALE |
| | EFFECTIVE DATE: 12/17/2024 |
| | SUPERCEDES: 12/05/2024 |



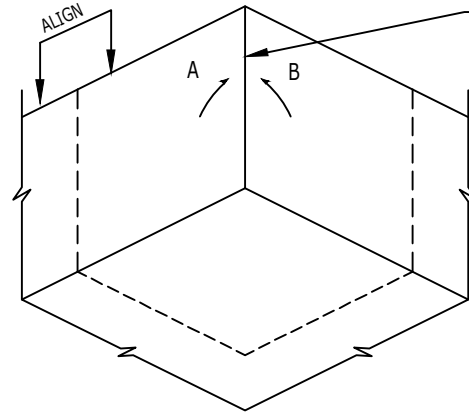
UST10 ISOMETRIC @ UNDERSLAB TRM - SUMP OR ELEVATOR PIT



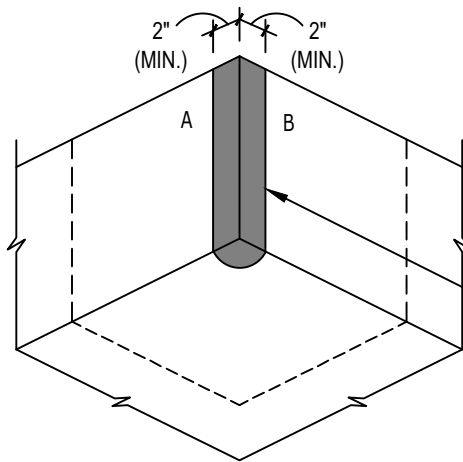
STEP 1 PRIORITY

POLYGUARD UNDERSEAL (US) PREFORMED INSIDE CORNER BOOT (12 X 12 X 12) INTO CORNER WITH POLYETHYLENE SIDE INTERFACING WITH CONCRETE FORM OR WALL. REFERENCE POLYGUARD UNDERSLAB TRM INSIDE CORNER BOOT STANDARD DETAIL (TU20) PRIOR TO STARTING THIS INSIDE CORNER DETAIL.

GENERAL NOTE:
PURCHASE POLYGUARD US PREFORMED INSIDE CORNER BOOT, OR FIELD FABRICATE USING POLYGUARD 650 TRM BOOT STANDARD DETAIL (TU20) FOR POLYGUARD UNDERSLAB TRM INSIDE CORNER - THIS STEP IS A CRITICAL STEP THAT MUST BE DONE PRIOR TO PLACING POLYGUARD UNDERSLAB TRM - OMITTING THIS STEP VOIDS WARRANTY

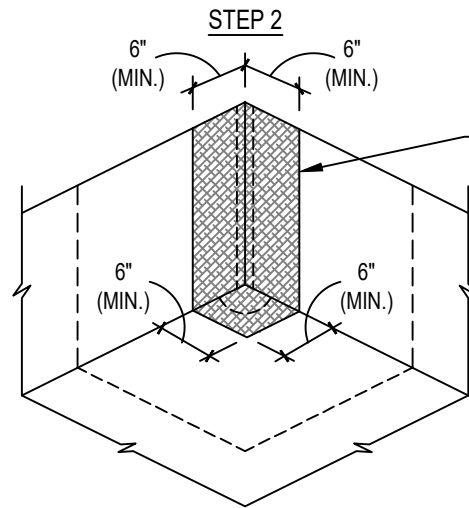


POSITION CUT POLYGUARD UNDERSLAB TRM INTO CORNER AND OVER POLYGUARD INSIDE CORNER BOOT SO (A) AND (B) EDGES MEET IN VERTICAL LEG OF BOOT; FORM-FIT PIECE TO CORNER CONTOURS. CREASE POLYGUARD UNDERSLAB TRM TO ESTABLISH A CONFORMING SHAPE. AFTER CREATING, FOLD PIECE BACK, REMOVE RELEASE PAPER FROM INSIDE CORNER BOOT HORIZONTAL LEG, THEN OVERLAY AND PRESS UNDERSLAB TRM HORIZONTAL LEG INTO BOOT; REPEAT FOR EACH VERTICAL LEG.



STEP 3

PREPARE POLYGUARD UNDERSLAB TERM WATER / TERMITE BARRIER MEMBRANE FABRIC ALONG (A) AND (B) EDGES WITH POLYGUARD 650 LT LIQUID ADHESIVE OR CALIFORNIA SEALANT APPLIED AT A RATE OF 50 - 75 SF / GAL PRIOR TO SEALING (A) AND (B) EDGES AND BOTTOM CORNER WITH POLYGUARD LM-95 OR TRM SEALANT APPLIED AND TOOLED TO MINIMUM 90 MILS BY 2" WIDE APPLICATION ONTO EACH LEG AND JOINED AT INTERSECTING PLANES.

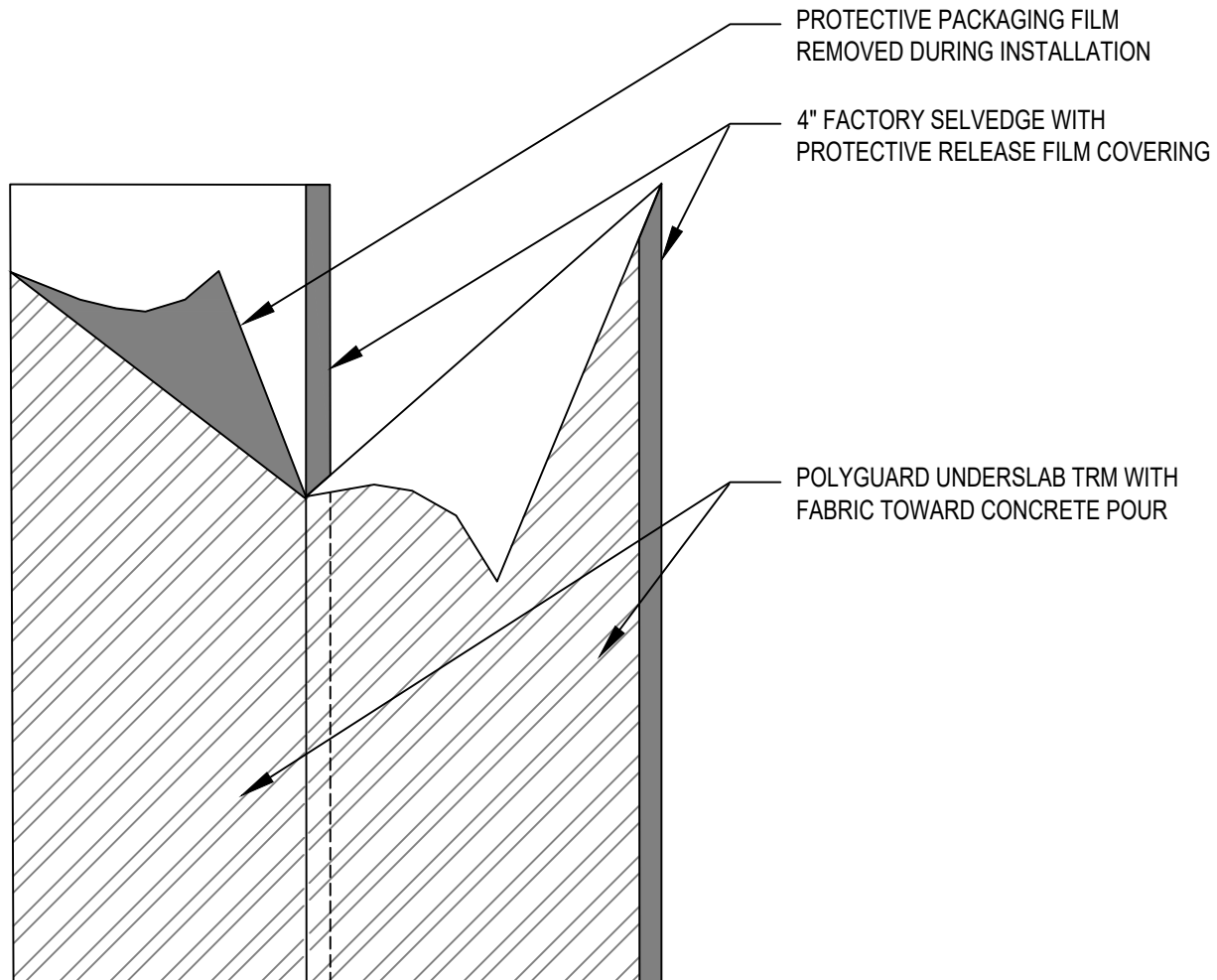


STEP 4

POLYGUARD FABRIC TAPE APPLIED TIGHTLY OVER CURED POLYGUARD TRM SEALANT AND POLYGUARD UNDERSLAB TRM FABRIC PREPARED WITH POLYGUARD 650 LT LIQUID ADHESIVE OR CALIFORNIA SEALANT APPLIED AT A RATE OF 50 - 75 SF / GAL

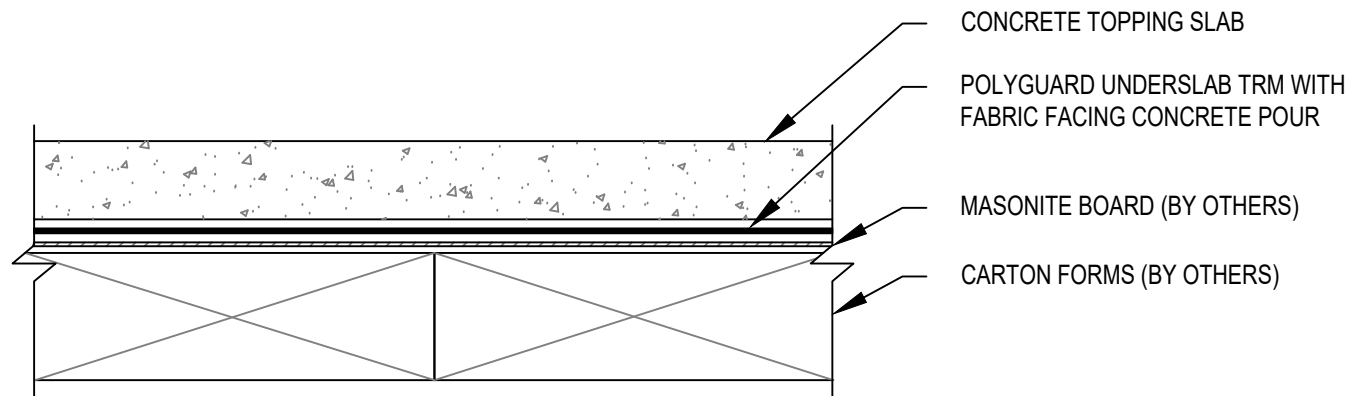
UST11 ISOMETRIC @ UNDERSLAB TRM - INSIDE CORNER (STEPS)

| | |
|--|-------------------------------|
| The information provided is based on data and knowledge considered to be true and accurate and is offered for the users' consideration, investigation and verification, but we do not warrant the results to be obtained. Please read all data sheets, statements, recommendations or suggestions in conjunction with our conditions of sale, which apply to all goods supplied by us. | NOT TO SCALE |
| | EFFECTIVE DATE: 12/17/2024 |
| | SUPERCEDES: 12/05/2024 |



UST12 ELEVATION @ UNDERSLAB TRM - SIDE LAP SELVEDGE

| | |
|---|-------------------------------|
| <small>The information provided is based on data and knowledge considered to be true and accurate and is offered for the users' consideration, investigation and verification, but we do not warrant the results to be obtained. Please read all data sheets, statements, recommendations or suggestions in conjunction with our conditions of sale, which apply to all goods supplied by us.</small> | NOT TO SCALE |
| | EFFECTIVE DATE: 12/17/2024 |
| | SUPERCEDES: 12/05/2024 |



UST13 SECTION @ UNDERSLAB TRM - CARTON FORM

Polyguard Products, Inc.
P.O. Box 755 - Ennis, TX 75120
Phone: 214-515-5000
Web Site - www.polyguard.com

MATERIAL SEPARATED FOR CLARITY
© POLYGUARD PRODUCTS, INC.

| | |
|---|-------------------------------|
| <small>The information provided is based on data and knowledge considered to be true and accurate and is offered for the users' consideration, investigation and verification, but we do not warrant the results to be obtained. Please read all data sheets, statements, recommendations or suggestions in conjunction with our conditions of sale, which apply to all goods supplied by us.</small> | NOT TO SCALE |
| | EFFECTIVE DATE: 12/17/2024 |
| | SUPERCEDES: 12/05/2024 |

POLYGUARD POLYFLOW 15 / 15P SHEET-MOLDED DRAINAGE AND PROTECTION BOARD WITH FABRIC FACING SOIL / BACKFILL

POLYGUARD 650 TRM APPLIED TO CLEAN, DRY, FROST-FREE, RAW CONCRETE PREPARED WITH POLYGUARD 650 LT LIQUID ADHESIVE OR CALIFORNIA SEALANT APPLIED AT A RATE OF 250 - 300 SF / GAL, OR OVER POLGUARD 650 WB LIQUID ADHESIVE APPLIED AT A RATE OF 350 - 400 SF / GAL

WATERSTOP (BY OTHERS)

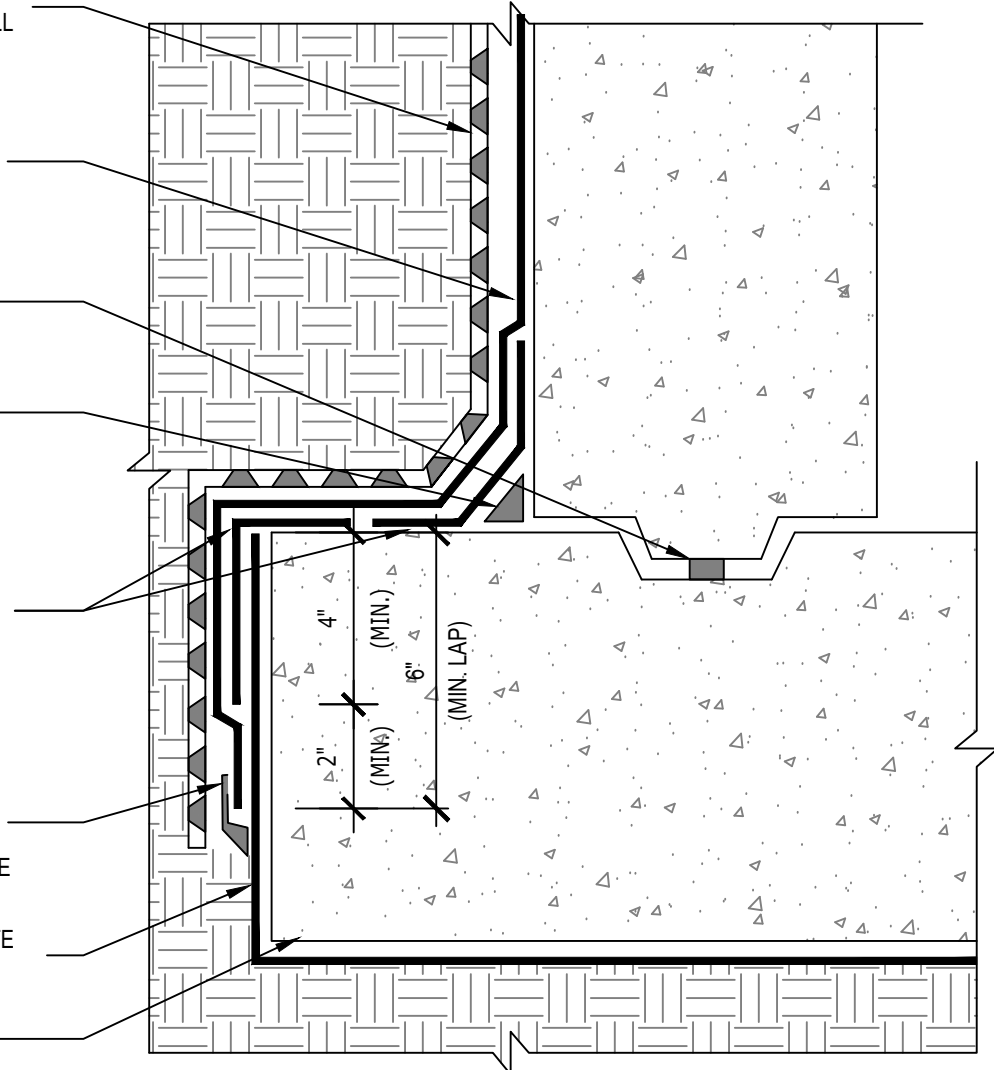
POLYGUARD LM-95 OR DETAIL SEALANT PW APPLIED AND TOOLED OVER CLEAN, DRY, FROST-FREE, RAW CONCRETE TO MINIMUM 3/4" FILLET / CANT

POLYGUARD 650 TRM STRIP APPLIED TO CLEAN, DRY, FROST-FREE, RAW INSIDE AND OUTSIDE CONCRETE CORNERS PREPARED WITH POLYGUARD 650 LT LIQUID ADHESIVE APPLIED AT A RATE OF 250 - 300 SF / GAL, OR OVER 650 WB LIQUID ADHESIVE APPLIED AT A RATE OF 350 - 400 SF / GAL; EXTEND MINIMUM 4" DOWN OVER UNDERSLAB TRM

POLYGUARD LM-95, DETAIL SEALANT PW, OR TRM SEALANT APPLIED AND TOOLED TO MINIMUM 90 MILS OVER AND ALONG CLEAN AND DRY POLYGUARD 650 TRM BOTTOM TERMINAL EDGE, EXTEND MINIMUM 1/2" TO EACH SIDE OF TERMINAL EDGE

POLYGUARD UNDERSLAB TRM WITH FABRIC FACING CONCRETE SLAB POUR, PROVIDE EMBEDDED TOP TERMINATION

PROVIDE ONLY WOOD FORMS FOR CONCRETE FOOTER POSITION AND PLACEMENT, NO EARTH FORMS



UST14

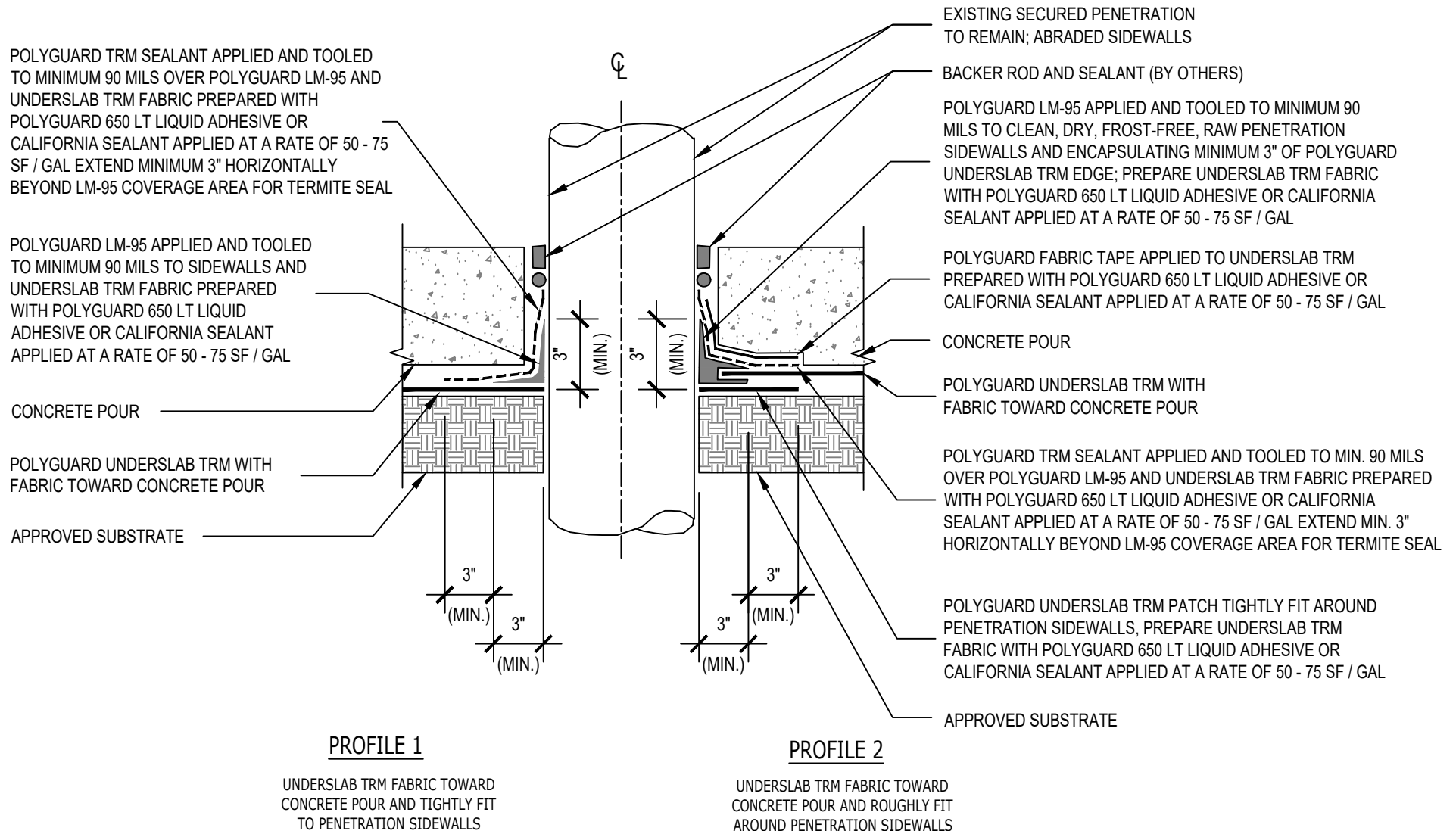
SECTION @ UNDERSLAB TRM - TIE-IN TO 650 TRM AT FOOTER

MATERIAL SEPARATED FOR CLARITY
© POLYGUARD PRODUCTS, INC.

Polyguard Products, Inc.
P.O. Box 755 - Ennis, TX 75120
Phone: 214-515-5000
Web Site - www.polyguard.com

GENERAL NOTE: IF ADHESIVE IS REQUIRED FOR SEAMS OR END LAPS, DO NOT USE POLYGUARD 650 WB LIQUID ADHESIVE.

| | |
|--|-------------------------------|
| The information provided is based on data and knowledge considered to be true and accurate and is offered for the users' consideration, investigation and verification, but we do not warrant the results to be obtained. Please read all data sheets, statements, recommendations or suggestions in conjunction with our conditions of sale, which apply to all goods supplied by us. | NOT TO SCALE |
| | EFFECTIVE DATE: 12/17/2024 |
| | SUPERCEDES: 12/05/2024 |



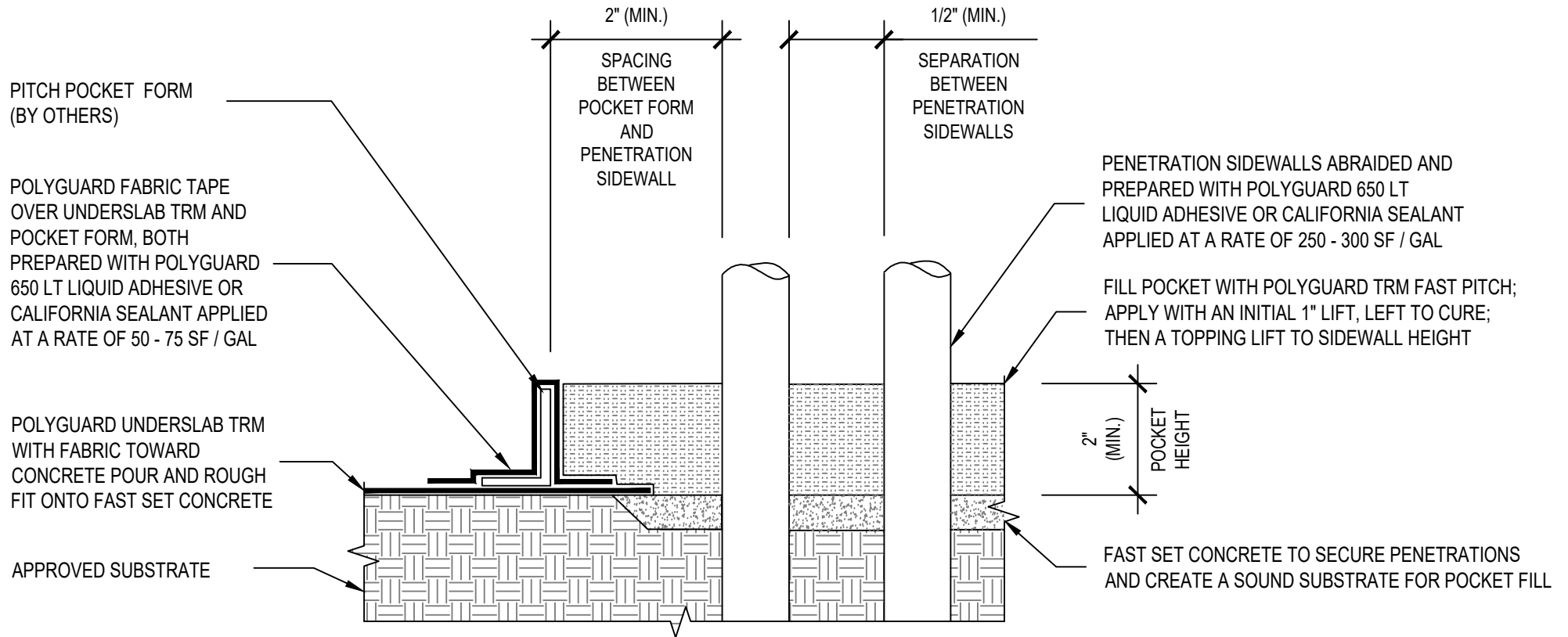
UST15

SECTION @ UNDERSLAB TRM - PIPE PENETRATION (PROFILE #1 & #2)

MATERIAL SEPARATED FOR CLARITY © POLYGUARD PRODUCTS, INC.

Polyguard Products, Inc.
P.O. Box 755 - Ennis, TX 75120
Phone: 214-515-5000
Web Site - www.polyguard.com

| | |
|--|--------------------------------------|
| The information provided is based on data and knowledge considered to be true and accurate and is offered for the users' consideration, investigation and verification, but we do not warrant the results to be obtained. Please read all data sheets, statements, recommendations or suggestions in conjunction with our conditions of sale, which apply to all goods supplied by us. | NOT TO SCALE |
| | EFFECTIVE DATE: 12/17/2024 |
| | SUPERCEDES: 12/05/2024 |

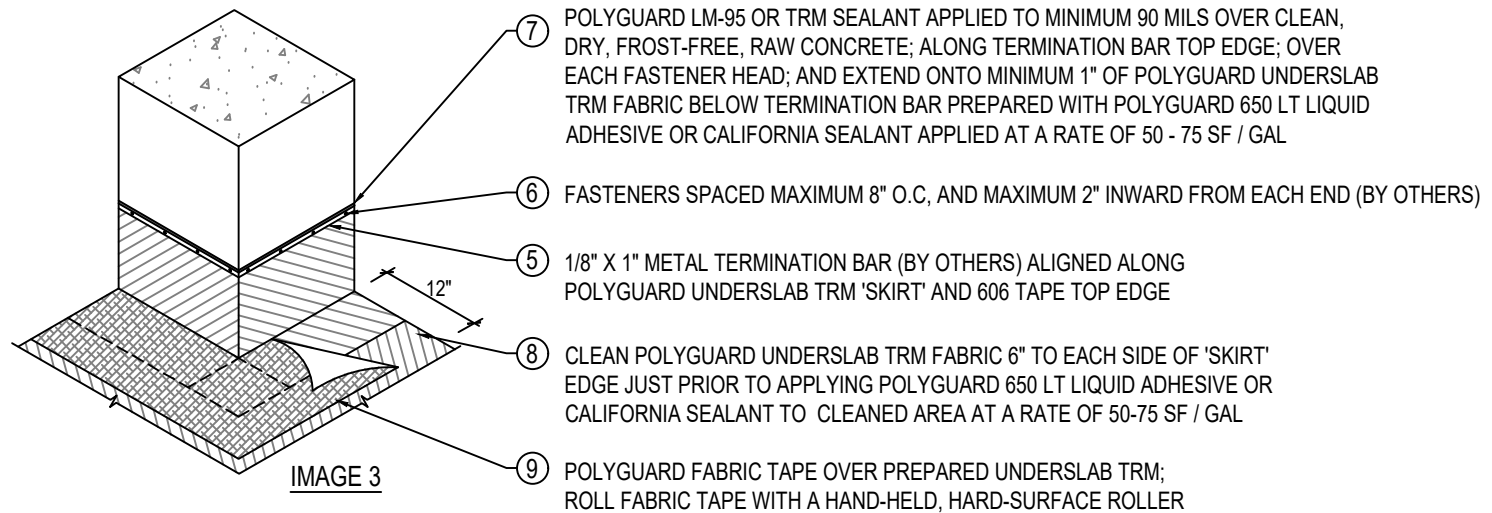
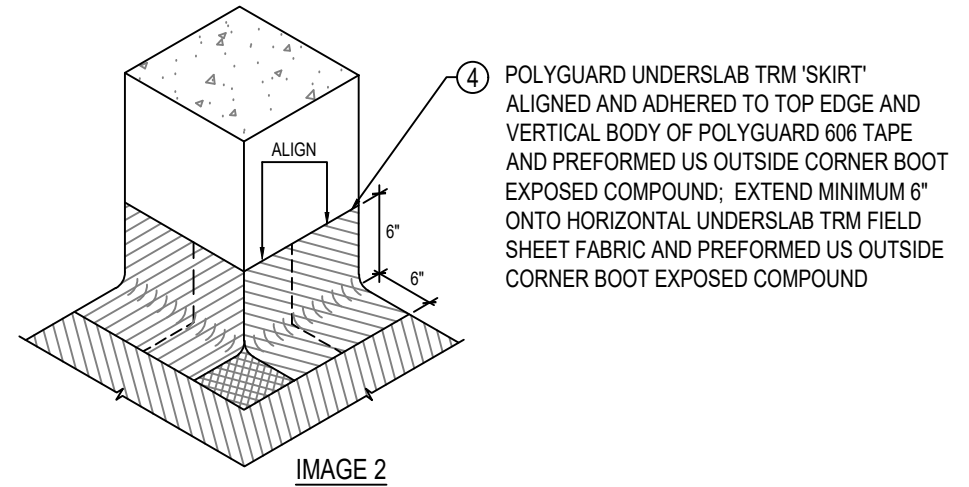
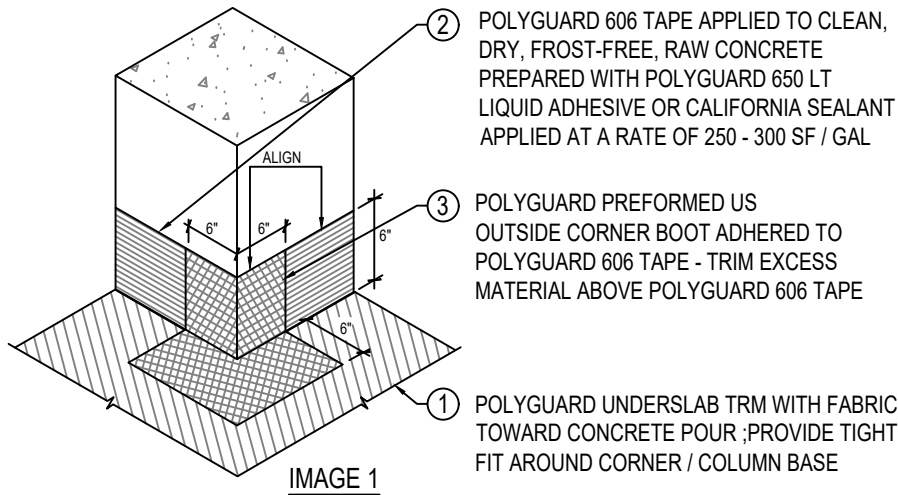


UST16

SECTION @ UNDERSLAB TRM - HORIZONTAL PITCH POCKET

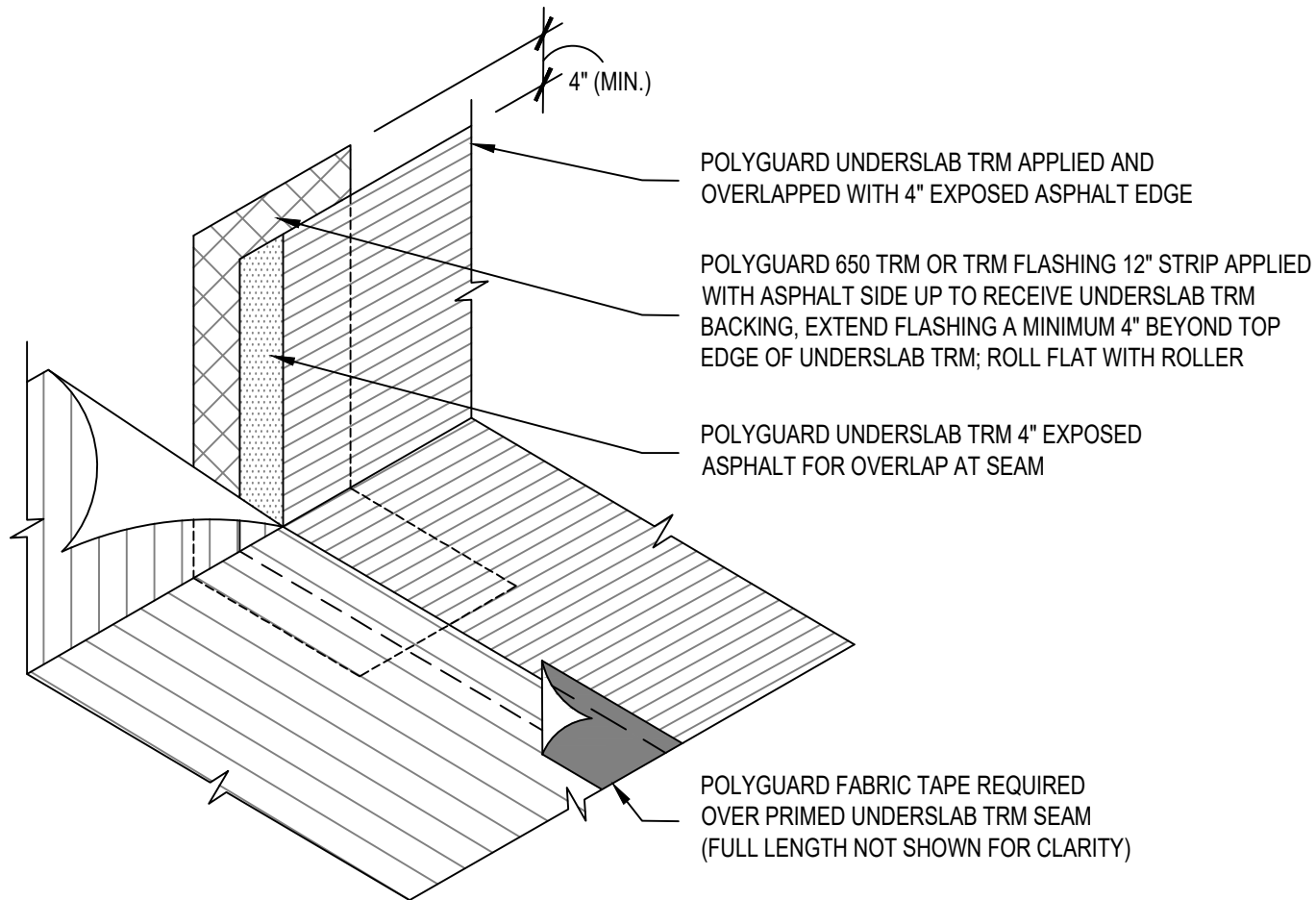
MATERIAL SEPARATED FOR CLARITY
© POLYGUARD PRODUCTS, INC.

| | |
|---|-------------------------------|
| <p>The information provided is based on data and knowledge considered to be true and accurate and is offered for the users' consideration, investigation and verification, but we do not warrant the results to be obtained. Please read all data sheets, statements, recommendations or suggestions in conjunction with our conditions of sale, which apply to all goods supplied by us.</p> | NOT TO SCALE |
| | EFFECTIVE DATE: 12/17/2024 |
| | SUPERCEDES: 12/05/2024 |



UST17

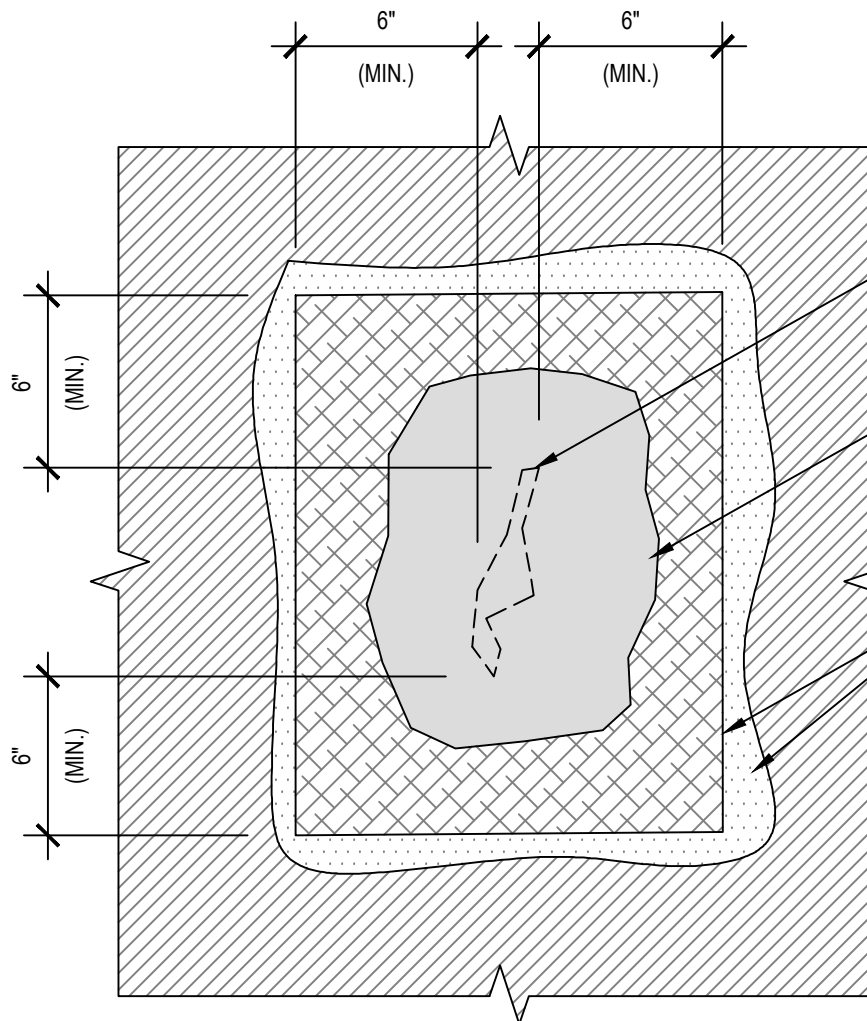
ISOMETRIC @ UNDERSLAB TRM - PREFORMED OUTSIDE CORNER AT COLUMN



UST18

ISOMETRIC @ UNDERSLAB TRM - HORIZONTAL-TO-VERTICAL SEAM

| | |
|--|-------------------------------|
| The information provided is based on data and knowledge considered to be true and accurate and is offered for the users' consideration, investigation and verification, but we do not warrant the results to be obtained. Please read all data sheets, statements, recommendations or suggestions in conjunction with our conditions of sale, which apply to all goods supplied by us. | NOT TO SCALE |
| | EFFECTIVE DATE: 12/17/2024 |
| | SUPERCEDES: 12/05/2024 |



POLYGUARD UNDERSLAB TRM REPAIR AREA

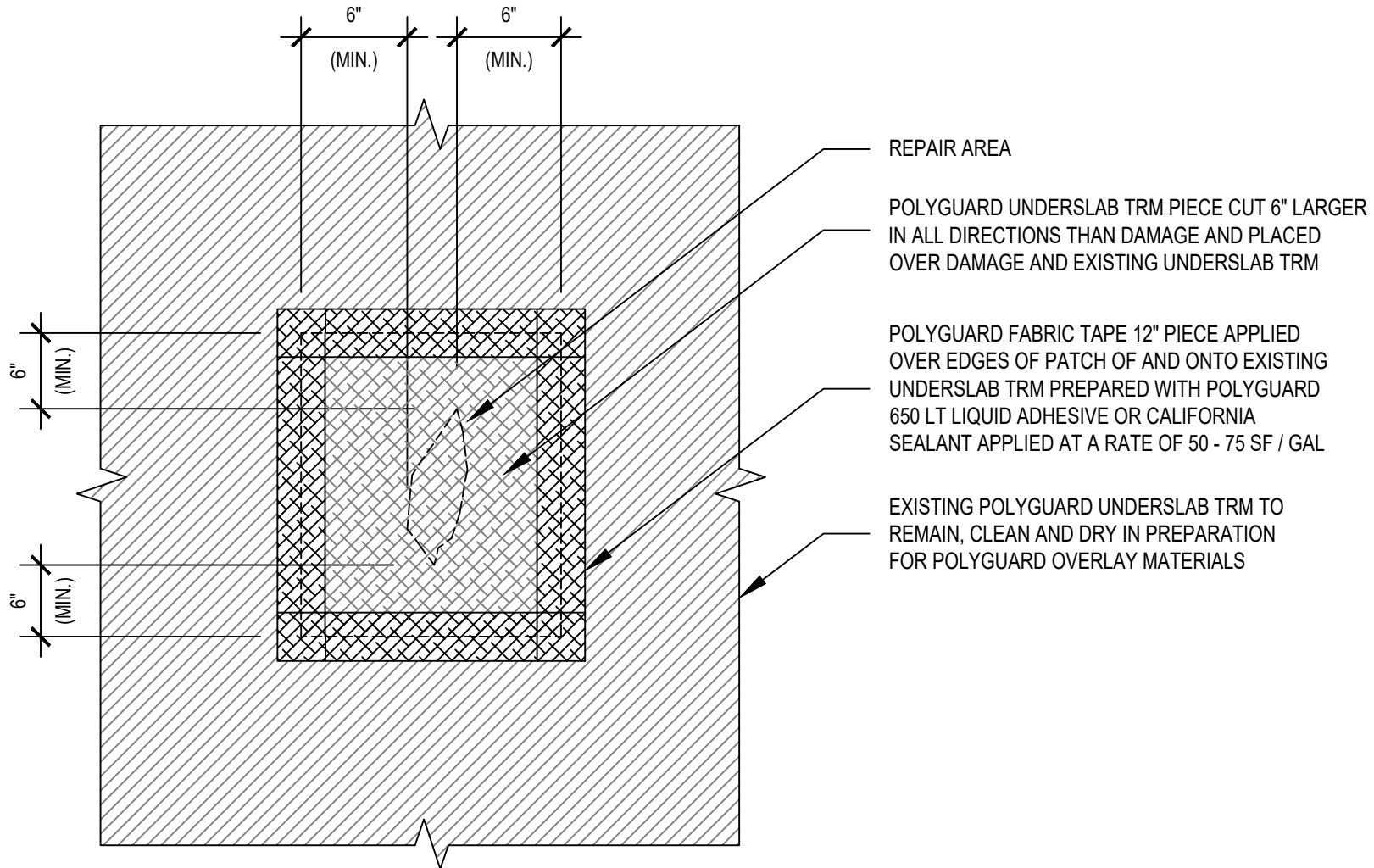
STEP #1: POLYGUARD LM-95 OR TRM SEALANT APPLIED AND TOOLED TO MINIMUM 60 MILS OVER CLEAN AND DRY POLYGUARD UNDERSLAB TRM HDPE FILM REPAIR AREA, EXTEND MINIMUM 1" BEYOND REPAIR AREA IN ALL DIRECTIONS

STEP #2: POLYGUARD FABRIC TAPE OVER CLEAN AND DRY UNDERSLAB TRM AND REPAIR SEALANT PREPARED WITH POLYGUARD 650 LT LIQUID ADHESIVE OR CALIFORNIA SEALANT APPLIED AT A RATE OF 50 - 75 SF / GAL, EXTEND FABRIC TAPE MINIMUM 6" BEYOND DAMAGE IN ALL DIRECTIONS

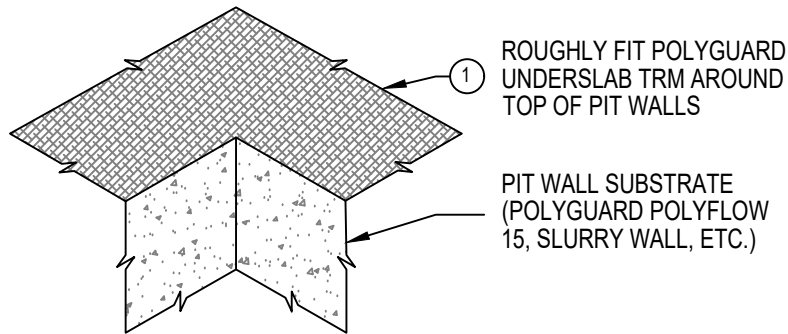
EXISTING POLYGUARD UNDERSLAB TRM TO REMAIN, CLEAN AND DRY IN PREPARATION FOR POLYGUARD OVERLAY MATERIALS

UST19 ELEVATION @ UNDERSLAB TRM - REPAIR PATCH LESS THAN 2"

| | |
|--|-------------------------------|
| The information provided is based on data and knowledge considered to be true and accurate and is offered for the users' consideration, investigation and verification, but we do not warrant the results to be obtained. Please read all data sheets, statements, recommendations or suggestions in conjunction with our conditions of sale, which apply to all goods supplied by us. | NOT TO SCALE |
| | EFFECTIVE DATE: 12/17/2024 |
| | SUPERCEDES: 12/05/2024 |



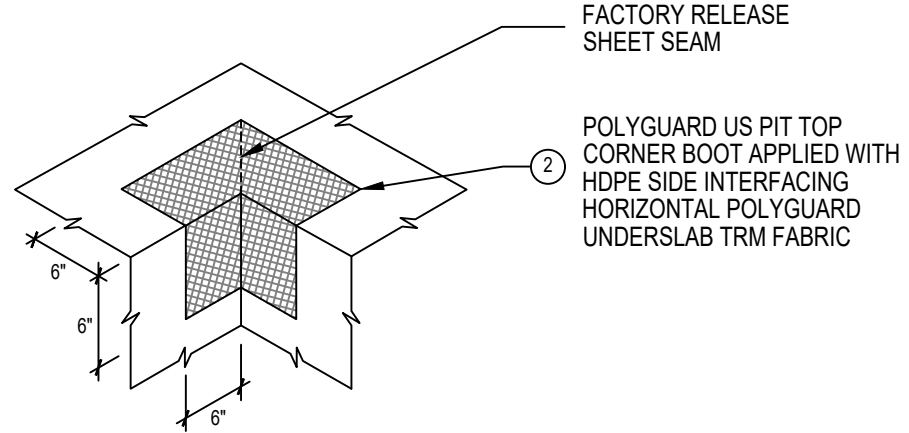
UST20 ELEVATION @ UNDERSLAB TRM - REPAIR PATCH GREATER THAN 2"



1 ROUGHLY FIT POLYGUARD
UNDERSLAB TRM AROUND
TOP OF PIT WALLS

PIT WALL SUBSTRATE
(POLYGUARD POLYFLOW
15, SLURRY WALL, ETC.)

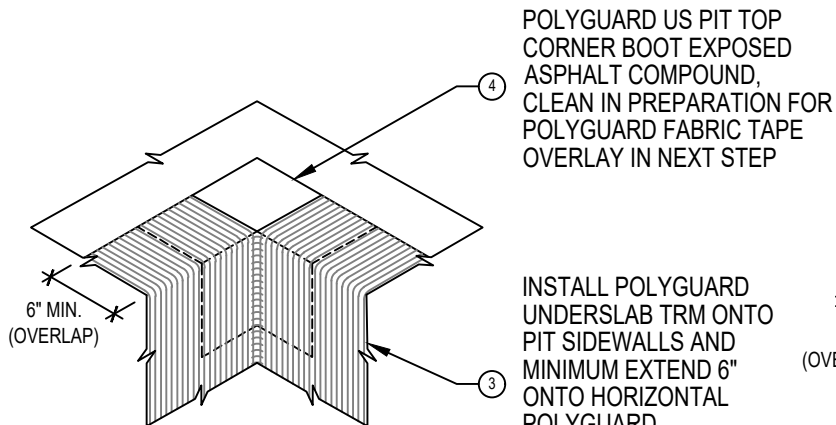
IMAGE 1



FACTORY RELEASE
SHEET SEAM

2 POLYGUARD US PIT TOP
CORNER BOOT APPLIED WITH
HDPE SIDE INTERFACING
HORIZONTAL POLYGUARD
UNDERSLAB TRM FABRIC

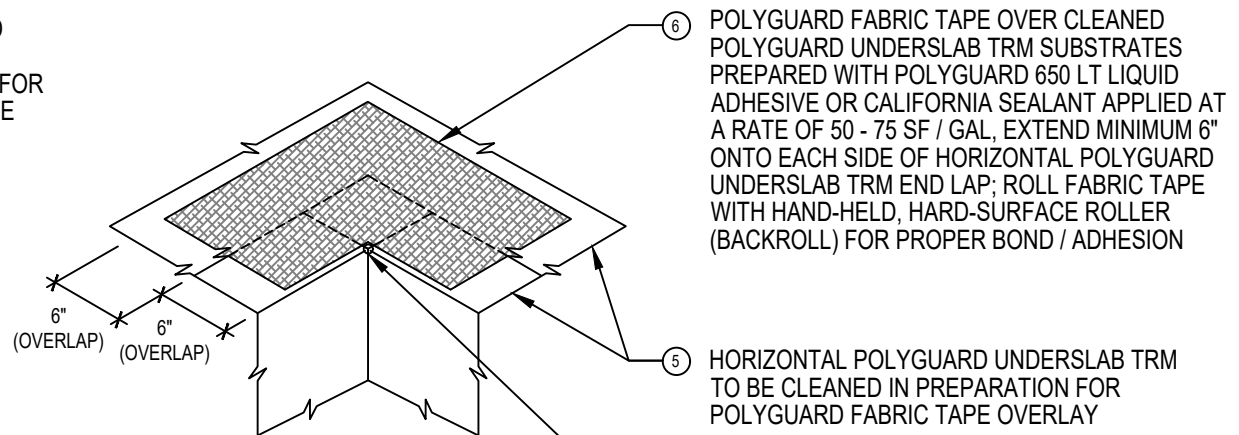
IMAGE 2



4 POLYGUARD US PIT TOP
CORNER BOOT EXPOSED
ASPHALT COMPOUND,
CLEAN IN PREPARATION FOR
POLYGUARD FABRIC TAPE
OVERLAY IN NEXT STEP

3 INSTALL POLYGUARD
UNDERSLAB TRM ONTO
PIT SIDEWALLS AND
MINIMUM EXTEND 6"
ONTO HORIZONTAL
POLYGUARD
UNDERSLAB TRM
AROUND TOP OF PIT

IMAGE 3



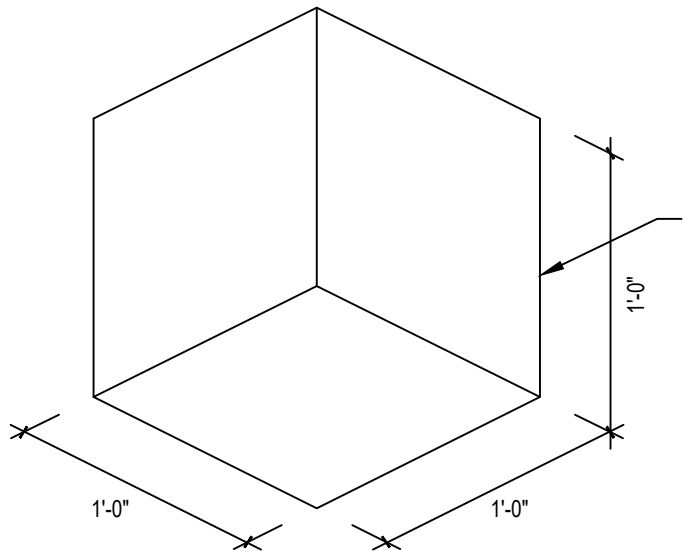
6 POLYGUARD FABRIC TAPE OVER CLEANED
POLYGUARD UNDERSLAB TRM SUBSTRATES
PREPARED WITH POLYGUARD 650 LT LIQUID
ADHESIVE OR CALIFORNIA SEALANT APPLIED AT
A RATE OF 50 - 75 SF / GAL, EXTEND MINIMUM 6"
ONTO EACH SIDE OF HORIZONTAL POLYGUARD
UNDERSLAB TRM END LAP; ROLL FABRIC TAPE
WITH HAND-HELD, HARD-SURFACE ROLLER
(BACKROLL) FOR PROPER BOND / ADHESION

5 HORIZONTAL POLYGUARD UNDERSLAB TRM
TO BE CLEANED IN PREPARATION FOR
POLYGUARD FABRIC TAPE OVERLAY

7 POLYGUARD LM-95 OR TRM SEALANT
APPLIED ONTO SURROUNDING FABRICS
AND TOOLED TO MINIMUM 90 MILS

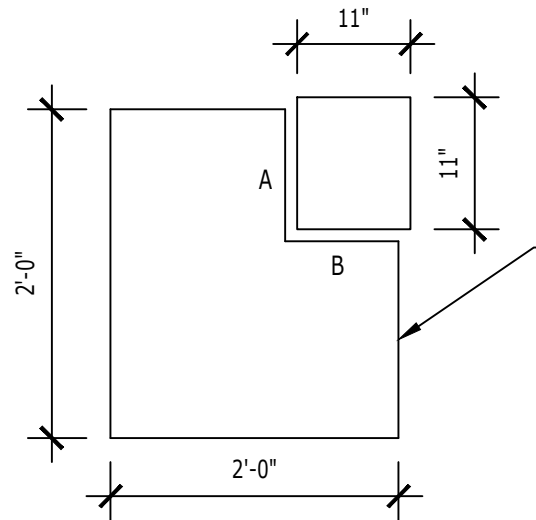
IMAGE 4

UST21 ISOMETRIC @ UNDERSLAB TRM - PIT TOP CORNER (STEPS)



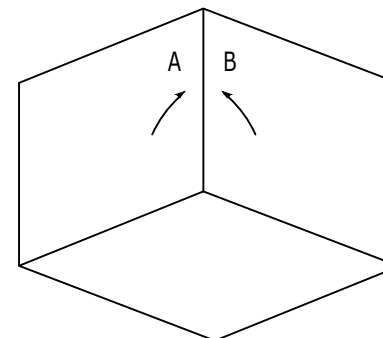
POLYGUARD UNDERSEAL (US) PREFORMED INSIDE CORNER BOOT (12 X 12 X 12) INTO CORNER WITH POLYETHYLENE SIDE INTERFACING WITH CONCRETE FORM OR WALL

OPTION 1: POLYGUARD UNDERSEAL (US) PREFORMED INSIDE CORNER BOOT



24 X 24 PIECE OF POLYGUARD 650 TRM; CUT AND REMOVE 11" X 11" SQUARE FROM ONE CORNER USING CORNER AS STARTING POINT FOR CUT DIMENSIONS AND CONTINUE ALONG AN EDGE A DISTANCE EQUAL TO HEIGHT OF VERTICAL LEG OF INSIDE CORNER BOOT. CUT INWARD FROM EDGE TO THIS DISTANCE AND DISCARD OFF WALL PIECE.

OPTION 2: FIELD-FORMED POLYGUARD (IMAGE #1) INSIDE CORNER BOOT



REMOVE 1" OF POLYGUARD 650 TRM FILM SO (A) AND (B) EDGES MEET IN VERTICAL LEG OF BOOT; ROLL VERTICAL SEAM WITH A ROLLER AND UNFOLD TO CREATE INSIDE CORNER BOOT

OPTION 2: FIELD-FORMED POLYGUARD (IMAGE #2) INSIDE CORNER BOOT

UST22 ISOMETRIC @ UNDERSLAB TRM - INSIDE CORNER BOOT (OPTIONS)

| | |
|--|-------------------------------|
| The information provided is based on data and knowledge considered to be true and accurate and is offered for the users' consideration, investigation and verification, but we do not warrant the results to be obtained. Please read all data sheets, statements, recommendations or suggestions in conjunction with our conditions of sale, which apply to all goods supplied by us. | NOT TO SCALE |
| | EFFECTIVE DATE: 12/17/2024 |
| | SUPERCEDES: 12/05/2024 |

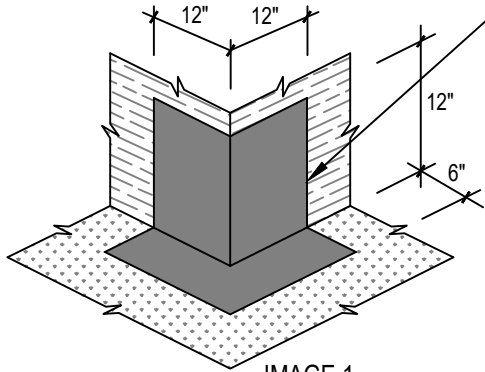


IMAGE 1

STEP 1: PLACE OUTSIDE CORNER BOOT (REFER TO DETAIL 19) ONTO CONCRETE FORM ASPHALT SIDE OUT - KEEP CLEAN FOR ADHESION OF POLYGUARD UNDERSLAB TRM FIELD-APPLIED CORNER PIECES

STEP 2: PLACE FIRST LEG OF POLYGUARD UNDERSLAB TRM VERTICALLY ON FORM, OVER VERTICAL LEG OF CLEAN OUTSIDE CORNER BOOT EXPOSED ASPHALT, AND CUT VERTICALLY IN CORNER LAYING MINIMUM 12" HORIZONTAL FLAP AROUND CORNER ONTO CLEAN OUTSIDE CORNER BOOT EXPOSED ASPHALT

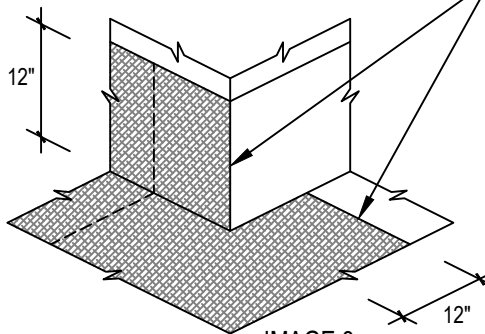


IMAGE 2

STEP 3: PLACE SECOND LEG OF POLYGUARD UNDERSLAB TRM VERTICALLY ON FORM, OVER VERTICAL LEG OF CLEAN OUTSIDE CORNER BOOT EXPOSED ASPHALT, AND CUT VERTICALLY IN CORNER LAYING MINIMUM 12" HORIZONTAL FLAP AROUND CORNER ONTO FIRST LEG OF UNDERSLAB TRM

STEP 4: APPLY POLYGUARD LM-95 OR TRM SEALANT APPLIED OVER VERTICAL CUTS AT CORNER AND TOOLED TO MINIMUM 90 MILS; EXTEND ONTO POLYGUARD UNDERSLAB TRM A MINIMUM 2" IN ALL DIRECTIONS OVER UNDERSLAB TRM FABRIC PREPARED WITH POLYGUARD 650 LT LIQUID ADHESIVE OR CALIFORNIA SEALANT APPLIED AT A RATE OF 50 - 75 SF / GAL

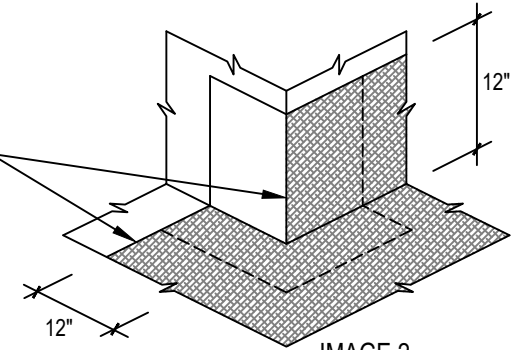


IMAGE 3

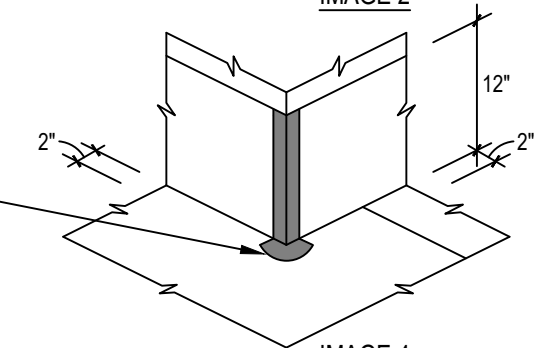


IMAGE 4

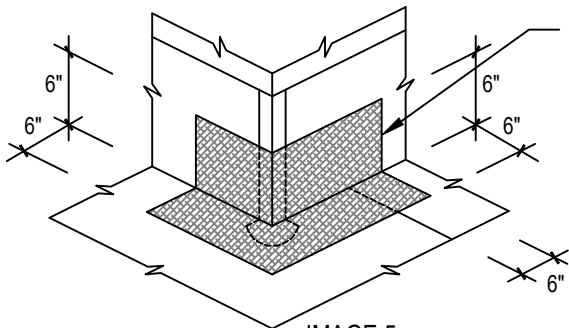


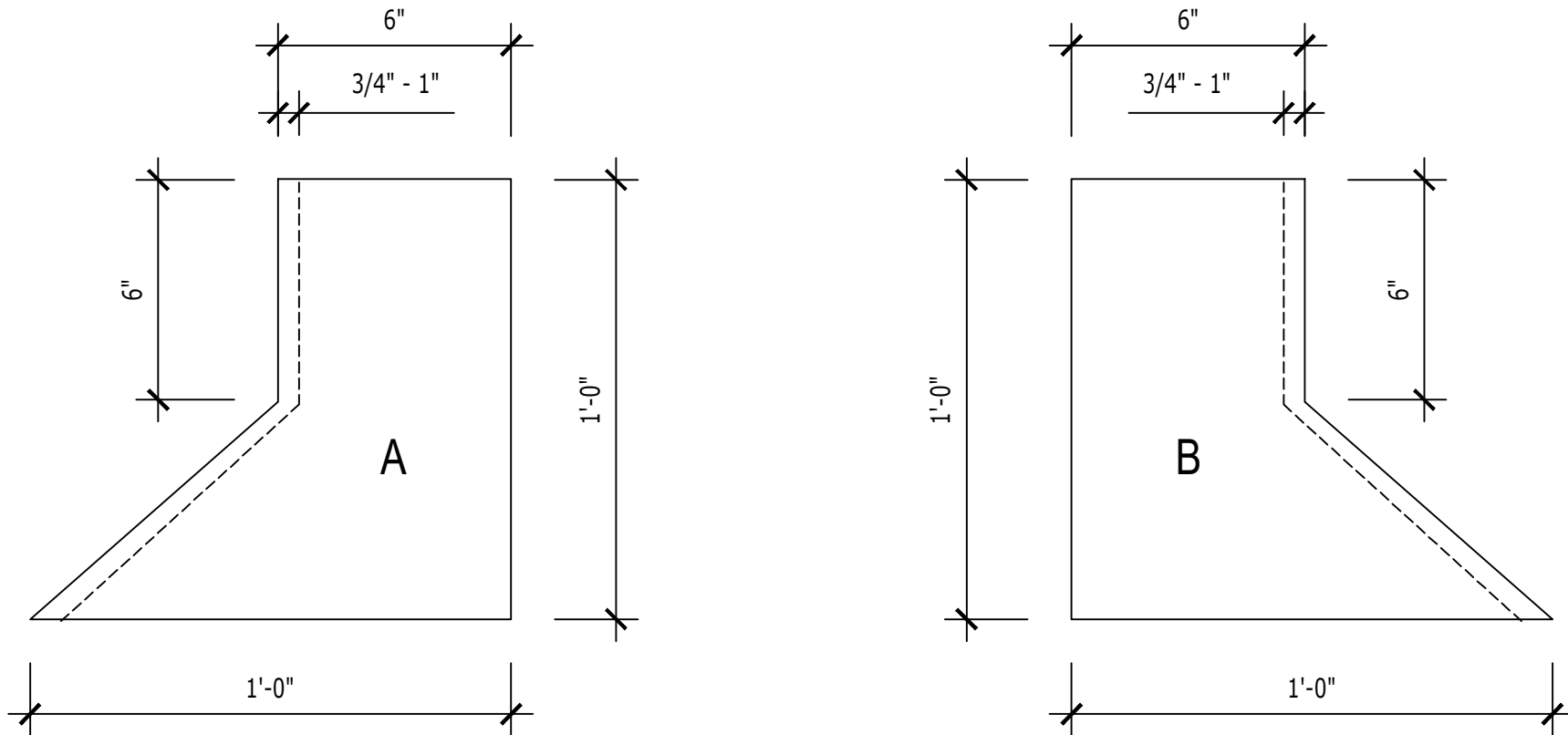
IMAGE 5

STEP 5: APPLY POLYGUARD FABRIC TAPE TO OUTSIDE CORNER AND OVER CURED POLYGUARD TRM SEALANT; EXTEND MINIMUM 6" BEYOND UNDERSLAB TRM CUT OF SECOND PIECE WITH FABRIC PREPARED WITH POLYGUARD 650 LT LIQUID ADHESIVE OR CALIFORNIA SEALANT APPLIED AT A RATE OF 50 - 75 SF / GAL

UST23

ISOMETRIC @ UNDERSLAB TRM - OUTSIDE CORNER (FIELD CUT)

| | |
|--|-------------------------------|
| The information provided is based on data and knowledge considered to be true and accurate and is offered for the users' consideration, investigation and verification, but we do not warrant the results to be obtained. Please read all data sheets, statements, recommendations or suggestions in conjunction with our conditions of sale, which apply to all goods supplied by us. | NOT TO SCALE |
| | EFFECTIVE DATE: 12/17/2024 |
| | SUPERCEDES: 12/05/2024 |



1. CUT 2 - 1'-0" X 1'-0" PIECES OF POLYGUARD 650 TRM
2. PIECES (A) & (B) CUT TO DIMENSIONS ABOVE AND MIRROR IMAGE
3. SCORE 3/4" - 1" RELEASE FILM AT ANGLED EDGE - REMOVE FILM
4. ADHERE PIECE (A) AND (B) AT EXPOSED 3/4" COMPOUND - ROLL TIGHT

UST24 ELEVATION @ UNDERSLAB TRM - FIELD-MADE OUTSIDE CORNER BOOT