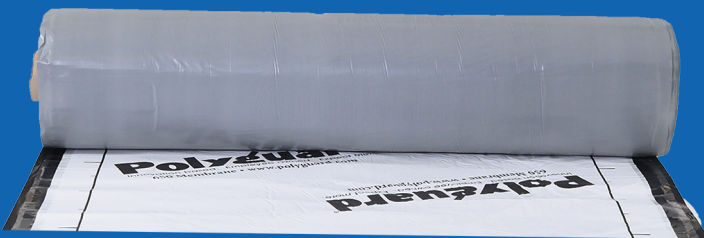


# 650 Membrane

## Product Overview



*650 Sheet Membrane is a strong, pliable, 60-mil, post-concrete pour self-adhesive waterproofing membrane/vapor retarder that virtually eliminates water and vapor transmission through concrete walls & slabs. 650 Sheet Membrane is designed for use on foundation walls, mud slabs, sills and spandrel beams, tunnels, plaza decks, parking garages, and related applications where waterproofing is critical. It may also be used on wood or concrete block structures and insulated concrete forms (ICF).*

*650 Sheet Membrane is available in the following sizes: 36" x 66.7' and 48" x 50' rolls.*



**Strong, self-adhering sheet membrane with a thick, high strength, tough co-extruded backing.**



**Outstanding Puncture Resistance: 2 times higher than the new AC 527 requirement when installed with our Polyflow® drain board as a system - Better protection against backfill damage.**



**Superior Joints: Strong laps seams create a long lasting, water tight system - Outperforms the new AC 527 standard (ASTM 1876) by more than 2 times the minimum requirement.**



**Jobsite Adaptability: Flexible material that adapts to job site irregularities for ease of installation.**



**VERTICAL – designed for application to the exterior sides of vertical concrete foundation walls, tunnels, and related applications where waterproofing is critical.**



**Can be utilized in the Dual Core System that capitalizes on both the advantages of a fluid-applied and sheet-applied membrane in a single system.**

Property	Test Method	Typical Value
Film Color		Black/White
Membrane Thickness	ASTM D 1000	60 mils
Tensile Strength – Membrane	ASTM D 412 Modified Die C	370 PSI
Elongation – Ultimate Failure of Rubberized Asphalt	ASTM D 412	600%
Tensile Strength – Film	ASTM D 882	7294 PSI
Permeance	ASTM E 96 Method B	0.022 Perms
Crack Cycling	ASTM C 836 Tested @ -15°F (-26°C)	No effect
Peel Adhesion to Concrete	ASTM D 903	17 lbs./in.
Peel Adhesion (Laps – Membrane to Membrane)	ASTM D 903	19 lbs./in.
Lap Peel Adhesion	ASTM D 1876	8.0 lbs./in.
Low Temperature Flexibility (-15°F)	ASTM D 1970 Modified	Pass
Pliability	ASTM D 146 180° bend over 1" mandrel at -25° F (-32°C)	No effect
Puncture Resistance – Membrane	ASTM E 154	69 lbs.
Resistance to Hydrostatic Head (minimum)	ASTM D 5385	231 ft.
Exposure to Soil Fungi	GSA-PBS 07115 (16 weeks)	No effect
Water Absorption (maximum)	ASTM D 570	0.1%

## Companion Products



**650 LT  
Liquid Adhesive**



**650 WB  
Liquid Adhesive**



**California  
Sealant**



**Detail  
Sealant PW™**



**LM-85 SSL**



**LM-95**



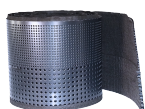
**Polyflow®  
15/15P**



**Polyflow®  
18**



**Polyflow®  
BD**



**Totalflow™**



**Totalflow™  
End Outlet**

**Totalflow™  
Tee Outlet**



**Detail Tape**

## contact us



3801 S. IH-45  
Ennis, TX 75119

Phone: 214-515-5000  
Web: [www.polyguard.com](http://www.polyguard.com)  
Social: @polyguardproducts

