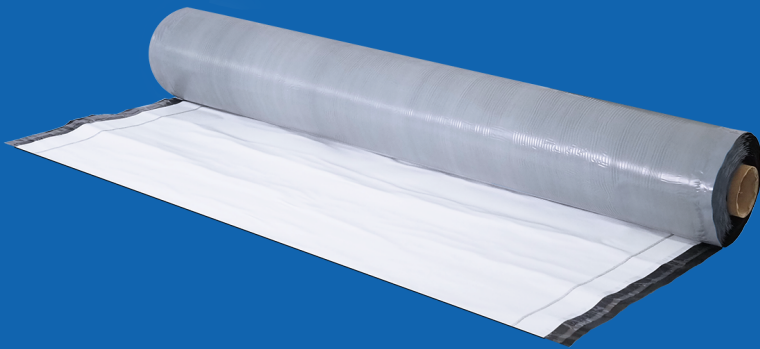


Underseal® PRM™

Product Overview



Underseal® PRM™ - Puncture Resistant Membrane - is a strong, self-adhering, 65-mil, post-concrete pour sheet waterproofing membrane/vapor retarder with a double thick, high-strength, co-extruded backing laminated to a thick layer of rubberized asphalt compound. Underseal® PRM™ adheres tightly and permanently to concrete. The backing forms a continuous barrier to water and moisture vapor entry. Underseal® PRM™ can be used in both horizontal and vertical applications.

VERTICAL APPLICATION: *Underseal® PRM™ can be used in wall applications when applied to the exterior side of vertical concrete foundation walls, tunnels, and related applications where waterproofing is critical. It allows for faster waterproofing applications by eliminating the step to install an additional protection course prior to backfilling with clean fill.*

HORIZONTAL APPLICATION: *Underseal® PRM™ can be applied to horizontal slab applications such as parking garages, plaza decks, plywood decks and related applications and allows for concrete topping slab installation without the need for a separate protection course in most situations.*



Strong, self-adhering sheet membrane with a thick, high strength, tough co-extruded backing.



Outstanding Puncture Resistance: 2 times higher than the new AC 527 requirement - Better protection against backfill damage.



Superior Joints: Strong laps seams create a long lasting, water tight system - Outperforms the new AC 527 standard (ASTM 1876) by more than 150%.



Allows for faster waterproofing applications by eliminating the step to install an additional protection course prior to backfilling when using clean fill.



Designed for application to HORIZONTAL slabs such as parking garages, plaza decks, plywood decks, and related applications where waterproofing is critical.



Designed for application to the exterior sides of VERTICAL concrete foundation walls, tunnels, and related applications where waterproofing is critical.



Can be utilized in the Dual Core System that capitalizes on both the advantages of a fluid-applied and sheet-applied membrane in a single system.



Jobsite Adaptability: Flexible material that adapts to job site irregularities for ease of installation.

Property	Test Method	Typical Value
Film Color		White
Membrane Thickness	ASTM D 1000	65 mils
Low Temperature Flexibility	ASTM D 146 180° bend over 1" mandrel at -25° F	No effect
Resistance to Hydrostatic Head (minimum)	ASTM D 5385	231 ft.
Elongation - Ultimate failure of Rubberized asphalt	ASTM D 412	> 850%
Tensile Strength of 1" Width	ASTM D 412 Modified Die C	5000 PSI
Crack Cycling	ASTM C 836 Tested @-15° F	No effect
Puncture Resistance (minimum)	ASTM E 154 Membrane using 1" (24mm) Rod	127 lbs.
Peel Adhesion to Concrete	ASTM D 903	17 lb/in. width
Lap Peel Adhesion	ASTM D 1876 Modified	8.0 lb/in width
Permeance to Water Vapor Transmission	ASTM E 96 Method B	0.01 US grains/ft2/in HGF
Water absorption (minimum)	ASTM D 570	.1%
Resistance to Permeance by Methane Gas	ASTM D 1434 Tested Using 99.99% Purity	6.3×10^{-7} ft ³ /(ft ³ • hr • psi)
Resistance to Radioactive Radon Gas	Radon Reduction Technology Laboratory % Reduction in Radon Gas Diffusion	97.10%
Resistance to Fungi in Soil	GSA-PBS 07115 (16 weeks)	No effect

Companion Products



**650 LT
Liquid Adhesive**



**650 WB
Liquid Adhesive**



**California
Sealant**



**Detail
Sealant PW™**



LM-85 SSL



LM-95



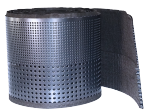
**Polyflow®
15/15P**



**Polyflow®
18**



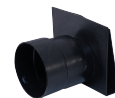
**Detail
Tape**



Totalflow™



**Totalflow™
End Outlet**



**Totalflow™
Tee Outlet**

contact us



3801 S. IH-45
Ennis, TX 75119

Phone: 214-515-5000

Web: www.polyguard.com

Social: @polyguardproducts

