



650 TRM

PRODUCT OVERVIEW

Since 2002, hundreds of foundations across the United States have been protected with our 650 TRM to exclude both water and termites. 650 TRM is a “peel and stick” barrier membrane used on concrete and ICF.

Polyguard waterproofing membranes (without termite exclusion) have been used worldwide on both commercial and residential construction since 1970. Research and testing of termite and pest exclusion, in cooperation with scientists at Texas A&M’s Urban and Structural Entomology Laboratory, began in 1999. Today, 650 TRM is a key part of a building envelope system with waterproofing and termite exclusion.

- The only physical termite barrier with over two decades of university testing and has been evaluated by the ICC (International Code Council) against their AC 380 standard Acceptance Criteria for Termite Physical Barrier Systems.
- Strong, pliable, self-adhesive sheet.
- 4-mil high density polyethylene film bonded to 64 mils of barrier sealant = 68 mils thick.
- Formulated for low temperature application down to 30°F (-1°C).
- No waiting is required before backfilling. Backfill material should be dry sand or dry soil dirt.
- 30-day UV exposure.

Property	Test Method	Typical Value
Color		Red/White
Membrane Thickness	ASTM D 1000	68 mils
Long Term Testing Against Termite Protection	ICC AC 380	ICC AC 380 Compliance ICC ESR-3632
Elongation of Barrier Sealant – Percent Stretch Before Failure	ASTM D 412	> 1000%
Pesticide Repellency (Chlordane, Fipronil, Permethrin)	ASTM F 2130	0% penetration
Permeance to Moisture/Vapor	ASTM E 96 Method B	0.03 Grains/ft ² /hr./in
Tensile Strength, Film	ASTM D 882	44.82 psi
Tensile Strength, Barrier Composite	ASTM D 412 Modified Die C	325 psi
Water Absorption	ASTM D 570	0.1%
Peel Adhesion	ASTM D 1000	10 lbs./in. width
Overlap Bond	ASTM D 1000	8 lbs./in. width
Low Temperature Flexibility	ASTM D 146 180° bend over 1” mandrel at -25° F (-32° C)	No cracking or delamination
Barrier Puncture Resistance	ASTM E 154 (Blunt Instrument)	50 lbs.
Resistance to Hydrostatic Head	ASTM D 5385	231 ft.

REV121624

Companion Products



650 LT
Liquid Adhesive



650 WB
Liquid Adhesive



California
Sealant



Detail
Sealant PW™



LM-95



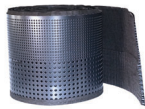
Polyflow®
15/15P



Polyflow®
18



Polyflow®
BD



Totalflow™



Totalflow™
End Outlet

Totalflow™
Tee Outlet

REV121624