

Totalflow™

PRODUCT OVERVIEW

Totalflow™ is a high-capacity sheet molded perimeter drainage system constructed using a formed polymeric core, designed specifically to transition water collected from sheet drains to an outlet drain.

- Fast and easy to install, eliminates the select backfill requirements.
- High profile allowing it to accept higher water flow.
- Transitions easy between sheet drain and high profile.
- Relieves hydrostatic pressure in foundations and retaining walls.

Property	Test Method	Typical Value
CORE		
Material		Polymeric
Compressive Strength	ASTM D 1621	9,000 lbs./ft ²
Thickness	ASTM D 1777	0.44 inch
In-Plane Flow Rate ¹		No
GEOTEXTILE		
Material		Polymeric
Water Flow Rate	ASTM D 4491	150 gpm/ft ²
CBR Puncture	ASTM D 6241	320 lbs.
Apparent Opening Size	ASTM D 4751	70 US Sieve
Grab Tensile Strength	ASTM D 4632	115 lbs.

1 – In plane flow rate measured at 3,600 nsf (172 kPa) compressive load and hydraulic gradient of 0.1

Drainage Systems & Accessories



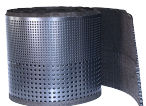
Polyflow®
15/15P



Polyflow®
18



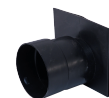
Polyflow®
BD



Totalflow™



Totalflow™
End Outlet



Totalflow™
Tee Outlet

REV071024