

BB LW (Blue Barrier Liquid Wrap)

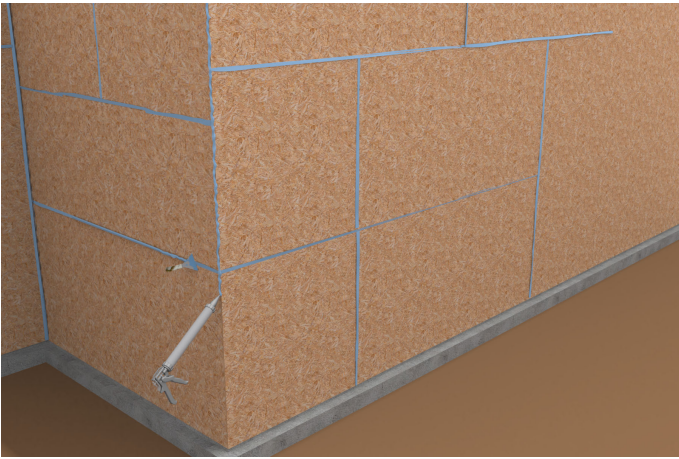
Tools/Materials Needed

- 5 gal pail of BB LW (Blue Barrier Liquid Wrap)
- 20 oz sausage tube of BB GF (Blue Barrier Gap Filler)
- Sausage gun
- 9 to 11-inch “Hot Dog Style” Roller handle and Mini roller. (Roller pad has a small hole to accept handle.) Ideally a 1/4-inch nap non foam roller works best. A 3/8-inch nap will work. The roller width is dependent on the size of your bucket opening. Make sure you can “dip” the roller into your 5 gal bucket. If you can’t locate a “Hot Dog Style” roller to meet your needs use a standard roller with a heavy duty frame. The material your applying is substantial and you’ll want a sturdy roller.
- GRACO GH 833 Spray Pump
- GRACO GH 833 Tip with 629-635
- A piece of 60 Grit Sand Paper
- 2 to 4-inch “Chip Brush”
- A 2 to 4-inch plastic putty knife or trowel. Plastic cleans easier in this application than metal.



STEP 1

Clean & Prepare the substrate. Apply our fluid Air Barrier and detailing products to clean surfaces free of debris, sawdust, contaminants, oils etc. In many cases this can be accomplished with a stiff broom. In severe cases power wash off debris being careful to not harm substrates such as OSB. Substrate can be damp to the touch and Blue Barrier will still adhere well.



STEP 2

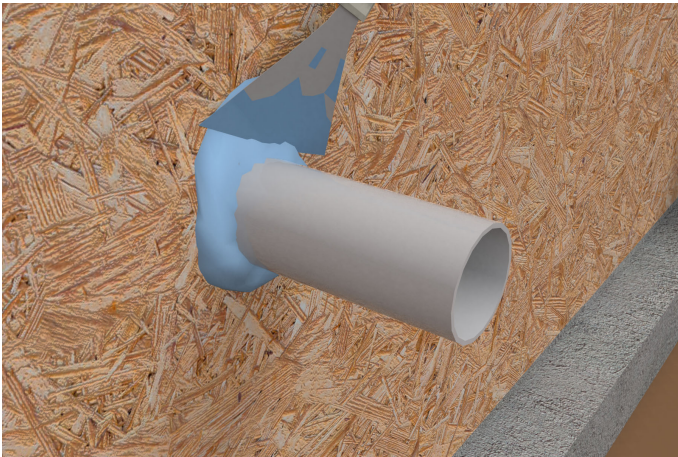
Voids in joints and dissimilar surfaces filled with BB GF (Blue Barrier Gap Filler) applied with a caulking gun and strike smooth with a putty knife / trowel. For voids in excess of 3/4-inch install a closed cell backer rod per manufacturer's instructions or spray urethane expanding foam in the void.



STEP 3

Penetrations. Scuff up plastic penetrations such as pipes with sandpaper to ensure a good bond with the fluid applied detailing products. If you have gaps or voids exceeding 3/4-inch around the penetrations fill with closed cell backer rod or closed cell urethane expanding foam.

REV 04/16/24



STEP 4

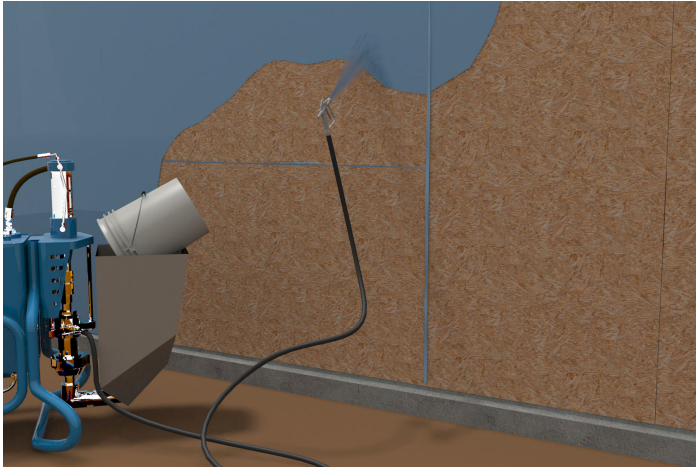
Caulk the penetration with BB GF (Blue Barrier Gap Filler) and be sure to carry it on to the penetration itself 2 to 4-inches. Allow 30 minutes for detail product to set up and you are ready to apply your air barrier. The Gap Filler will be tacky; but, when ready, it should not stick to your finger when touched.



STEP 5

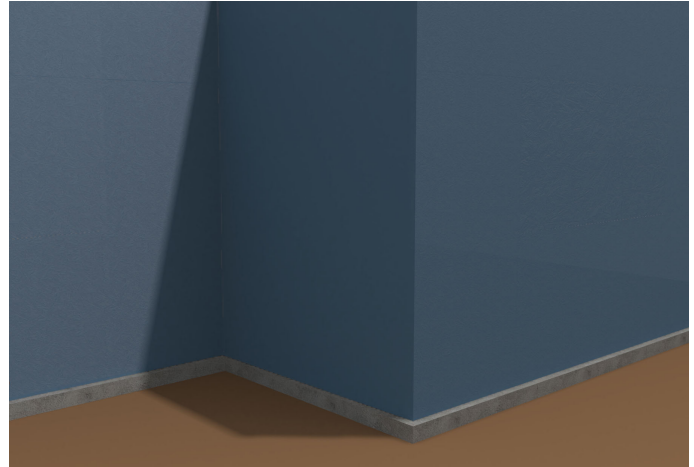
Applying the Air Barrier with roller (hand roller): We recommend BB LW (Blue Barrier Liquid Wrap). Open the 5 gallon bucket of product. Save lid liner for later use. Dip your roller into the bucket shaking off excess material back into the bucket. Start on one end of your building and apply from top of wall downward, then lapping each coat moving horizontally. Your goal is to apply approximately 20 mils wet of product which is enough where you cannot see wood any longer.

REV 04/16/24



STEP 5A

Applying the Air Barrier with a power sprayer; The following equipment has been approved for use with BB LW (Blue Barrier Liquid Wrap): GRACO GH 833 with a tip size of 629 through 635. Tip size will vary on how much PSI the machine is getting to the tip. Sprayer pressure should be approximately 3600 PSI. Standing back 2 feet from the building, apply 20 mils wet using a crosshatch spray pattern. If you don't have a mil gauge, cover the substrate enough so you only see "blue." **PLEASE NOTE:** Remove filters from the gun and pump prior to spraying. Run a solvent; such as mineral spirits, desaturated alcohol, or methyl acetate; through the pump prior to spray to make sure the Blue Barrier is not contaminated. **VERY IMPORTANT:** DO NOT let Blue Barrier material sit idle in the sprayer for more than 15 minutes. Clean your pump and wash with the solvent listed above after each use.



STEP 6

Completely cover the entire wall substrate (OSB) around the entire above grade portion of the building.

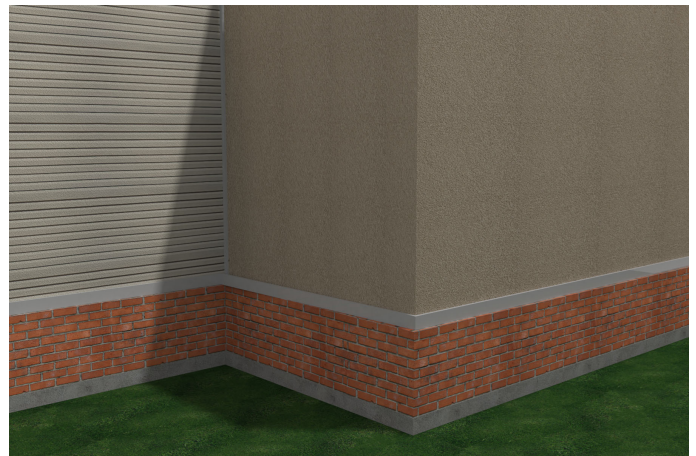
REV 04/16/24



STEP 7

Carry the coating approximately 4 inches onto the top of the foundation wall which will tie into your foundation waterproofing. On OSB at 20 wet mils you can expect coverage of 300 to 400 square ft per 5 gallon pail depending on the porosity and texture of the substrate and the relative humidity at the time.

- **Clean Up...** If product cannot be used on in its entirety the following steps will help preserve the material.
- **To preserve any BB LW (Blue Barrier Liquid Wrap) still in the bucket in-** bed the lid liner that you saved earlier and reseal the lid tightly.
- **For extended storage:** Prior to re- setting the lid liner, spray a nitrogen blanket to stop the material from prematurely curing. This type of product can be found in "Keyboard Cleaner" at office supply stores. Just 2 to 3 short bursts per application is all you need.
- **Helpful Hint:** If the product sits idle in the pail, cover the pail with both lid liner and lid to ensure future workability by slowing the product cure time.



STEP 8

Typically common sidings can be applied to Blue Barrier Air Barrier products the day after installation.

REV 04/16/24