

# WM40 -Waterproofing Membrane

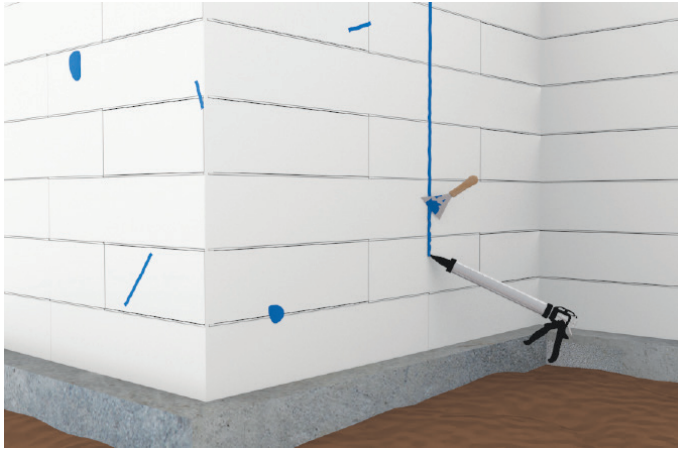
## STEP 1

**Apply WM40 waterproofing system onto vertical insulated concrete form (ICF) walls, cast-in-place concrete walls, concrete masonry (CMU) walls, or precast concrete foundation walls.**



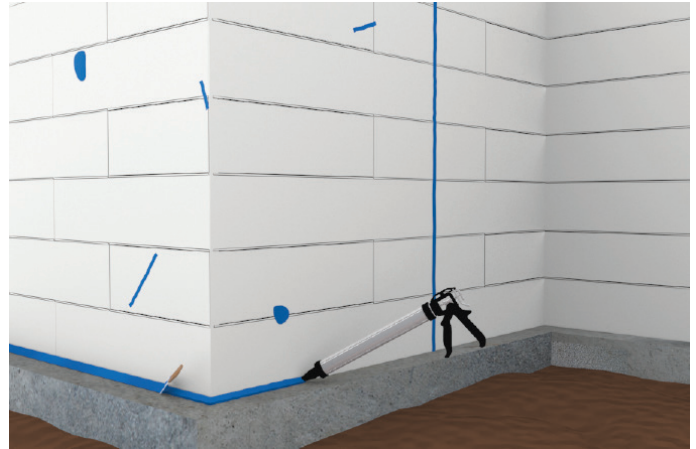
## STEP 2

**The substrate foundation and walls must be clean; dry; clear of dirt, debris, frost, smears, and concrete form release agents; and be allowed to cure a minimum three (3) days prior to the application of the WM40 waterproofing system.**



### STEP 3

Minor voids in the foundation wall, as well as wall control joints, are to be filled and sealed with Blue Barrier Gap Filler to provide a level plane for the application of the WM40 waterproofing material. Allow the Blue Barrier Gap Filler a minimum two (2) hours to skin over before covering with the WM40, adding additional time for lower ambient and surface temperatures.



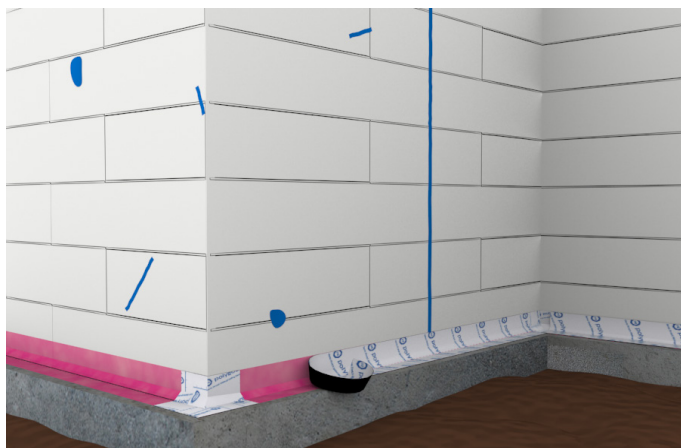
### STEP 4A

If WM40 is continued at the base of the foundation wall onto the footer, then where the vertical wall interfaces the footer shall be prepared with a 3/4-inch, 45 degree angle tooled cant of Blue Barrier Gap Filler. Allow a minimum two (2) hours for the Blue Barrier Gap Filler to cure prior to covering it up. Do NOT prime with Polyguard 650 WB underneath Blue Barrier Gap Filler applications. Do NOT use wood or fiber cant strips in substitution for the Blue Barrier Gap Filler.



## STEP 4B

If WM40 is continued at the base of the foundation wall onto the footer, then apply the Polyguard 650 WB at a rate of 350-400 SF / gal by lamb's wool roller or by brush to a cleaned, dust-free ICF substrate surface to provide a tacky adhesive surface for the WM40 installation. It is important to note that the Polyguard 650 WB **MUST** be tacky to the touch on the substrate wall prior to the WM40 installation.



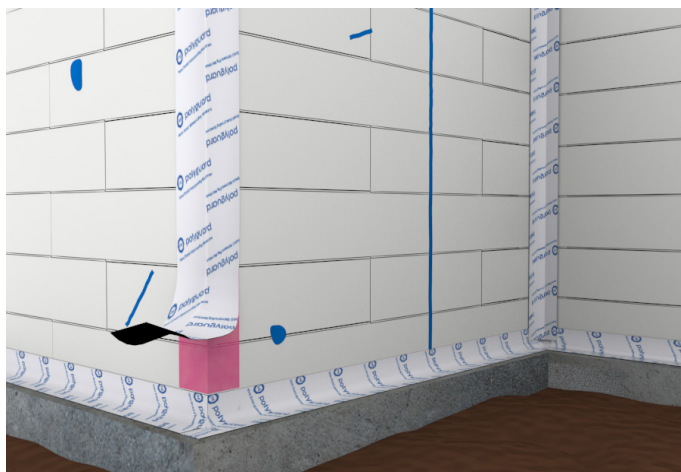
## STEP 4C

If WM40 is continued at the base of the foundation wall onto the footer, then apply a 12-inch wide strip of Home Stretch Detail Tape over the Blue Barrier Gap filler cant. Prior to installing the Home Stretch Detail Tape, apply Polyguard 650 WB at a rate of 350 – 400 SF / gal by lamb's wool roller or by brush to a cleaned, dust-free substrate surface to provide a tacky adhesive surface for the Home Stretch Detail Tape to bond to the wall and the horizontal face of the footer. Again, it is important to note that the Polyguard 650 WB **MUST** be tacky to the touch on the substrate wall prior to the Home Stretch Detail Tape installation. Center the Home Stretch Detail Tape along the joint's axis; and press, or roll, firmly to achieve a complete seal.



## STEP 5A

All inside and outside corners shall be treated with a 12-inch wide strip of Home Stretch Detail Tape. First apply Polyguard 650 WB at a rate of 350 – 400 SF / gal by lamb's wool roller or by brush to a cleaned, dust-free substrate surface to provide a tacky adhesive surface for the Home Stretch Detail Tape to bond to the wall. Again, it is important to note that the Polyguard 650 WB MUST be tacky to the touch on the substrate wall prior to the Home Stretch Detail Tape installation.



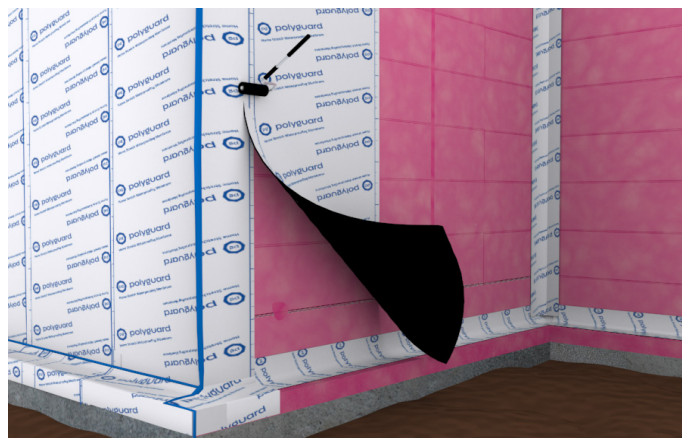
## STEP 5B

Center the Home Stretch Detail Tape along the joint's axis; and press, or roll, firmly to achieve a complete seal. As an alternative to the Home Stretch Detail Tape at all inside and outside corners, a 3/4-inch, 45 degree angle tooled cant of Blue Barrier Gap Filler is acceptable. Allow a minimum two (2) hours for the Blue Barrier Gap Filler to cure prior to covering it up. Do NOT prime with Polyguard 650 WB underneath Blue Barrier Gap Filler applications. Do NOT use wood or fiber cant strips in substitution for the Blue Barrier Gap Filler.



## STEP 6

Apply the Polyguard 650 WB at a rate of 350 – 400 SF / gal by lamb's wool roller or by brush to a cleaned, dust-free ICF substrate surface to provide a tacky adhesive surface for the WM40 installation. It is important to note that the Polyguard 650 WB **MUST** be tacky to the touch on the substrate wall prior to the WM40 Membrane installation. Re-prime all areas of the ICF substrate wall where the WM40 material is not applied within the same working day as the Polyguard 650 WB. Extend the Polyguard 650 WB application onto the horizontal top face of the footer, and continue vertically down the front face of the footer in preparation for the Polyguard WM40 sheet waterproofing full sheet application in the subsequent step.



## STEP 7

Align and apply the WM40 vertically in sections of 8 feet in length or less, include the top horizontal face of the footer and the front vertical face of the footer in the full sheet waterproofing membrane coverage area. A completed application of the full sheet waterproofing membrane provides coverage from the down the front vertical face of the footer, extending horizontally over the top face of the footer, and up the foundation wall to grade level. On walls higher than 8 feet, apply two or more sections of WM40 with the upper section overlapping the lower. Use heavy hand pressure while smoothing out the WM40 surface as its applied; and use a hard, narrow, hand-held roller to firmly adhere the material for a complete bond as it is placed on the vertical surfaces. When continuing the WM40 materials above grade to reach the top of foundation wall, apply Polyguard UV40 or metal flashing over all of the WM40 above grade, with its lower edge a minimum of four (4) inches below grade, to protect the installed WM40 from UV exposure beyond its 30 day limit.





## STEP 8

WM40 side laps shall be 2-1/2 inches minimum. Staggered end laps shall be 6 inches minimum.



## STEP 9

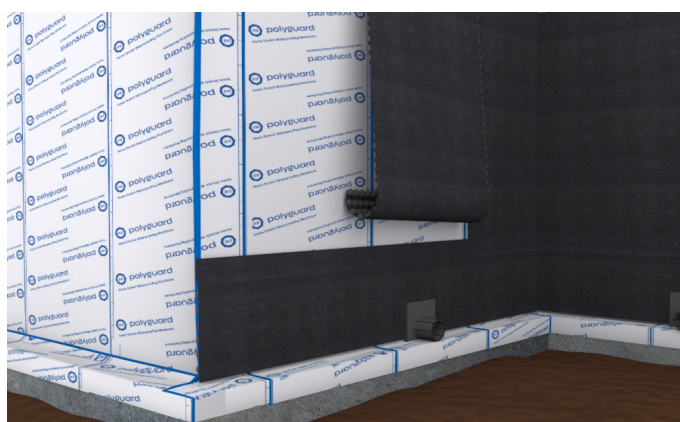
All WM40 wall terminations shall receive a termination bar (supplied by others). Firmly press the termination edge with a hard, narrow, hand-held roller; install the termination bar with fasteners, and then cover the membrane edge and termination bar with a tooled bead of Blue Barrier Gap Filler as a termination protection.

- Inadequately lapped seams and damaged areas shall be cleaned, primed, and patched with Home Stretch Detail Tape, extending the repair coverage at least 6 inches in each direction beyond the defect. Seal all Home Stretch Detail Tape edges with 30 mils tooled of Blue Barrier Gap Filler.

- Fishmouths and/or severe wrinkles shall be slit, flaps overlapped, and repaired with a Home Stretch Detail Tape patch.

- Puncture all air blisters, expel the air, prime and cover with a Home Stretch Detail Tape patch. Seal all Home Stretch Detail Tape edges with 30 mils tooled of Blue Barrier Gap Filler.

- WM40 will be adversely affected by prolonged or constant ultraviolet radiation (UV) exposure longer than 30 days. For periods of (UV) exposure greater than 30 days, remove and reapply all uncovered/exposed WM40.



## STEP 10

Install Polyguard's Totalflow and Polyflow 10 Protection and Drainage Board accessory products over the complete and continuous WM40 waterproofing system; or provide another protective board by others. Home Stretch Membrane surfaces should be dry and free of stones and dirt prior to drainboard/protection board installation.

Hold the selected drainboard / protection board in-place against the membrane by backfilling against the board in 1'-0" high sections (lifts) in a non-destructive manner, or by adhering the board directly to the membrane with Polyguard Quick Grip Adhesive. Quick Grip Adhesive is designed and approved only as a temporary hold (up to 72 hours) of the Polyflow 10 and Totalflow Drainboard materials on the vertical wall, so final backfill against the selected drainboard / protection board on the foundation wall must be completed as soon as possible in a non-destructive manner up to the maximum 72-hour time limit for the board materials to be secured in place long-term against the foundation wall. The temporary hold and release of the installed selected board from the Quick Grip Adhesive provides protection of the WM40 sheet waterproofing after backfill has been completed and may exert downward pressure on the board during settlement. The board will be allowed to detach from the membrane, by the Quick Grip Adhesive release, and slip downwards to relieve stress off the WM40.