

UV2-40

BASIC USES:

The Polyguard Wall System with UV2-40 Membrane should be considered in higher exposure homes that require a more robust air barrier / WRB strategy. UV2-40 is a 40-mil rubberized asphalt sheet membrane, laminated to two layers of high strength polyethylene film, with a top protective layer of aluminum for residential air barrier applications. The protective layer of aluminum provides a better UV resistance (up to 24 months) for exposure time before needing to be covered. Not intended to be used as a roofing material or for below-grade waterproofing applications.

ACCESSORIES

- UV2-40 Flashing in 6", 9", 12" x 75' rolls
- Blue Barrier Gap Filler (BB GF) is available in a 20 oz sausage cartridge.
- 650 WB Liquid Adhesive or ClearBond Liquid Adhesive available in 1-or 5-gallon pails

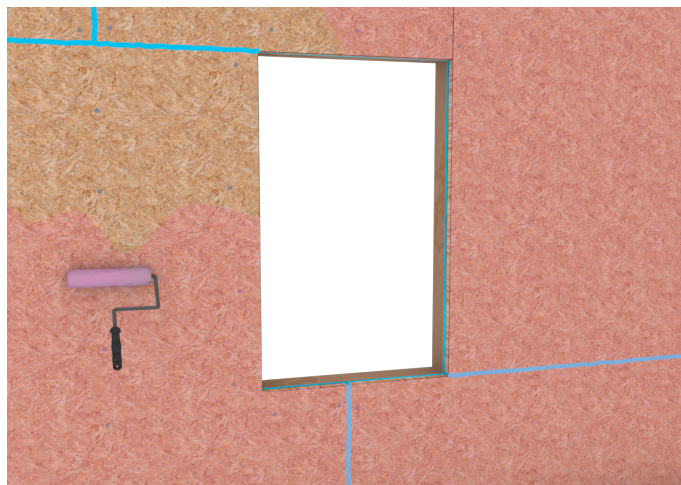
TOOLS NEEDED

- Sausage gun
- Plastic/metal trowel
- Utility Knife or scissors
- Hand or J-roller



STEP 1

As wall surface preparation; provide a clean, dry, frost-free substrate at minimum 40 degrees Fahrenheit and rising prior to installing Polyguard UV2-40.



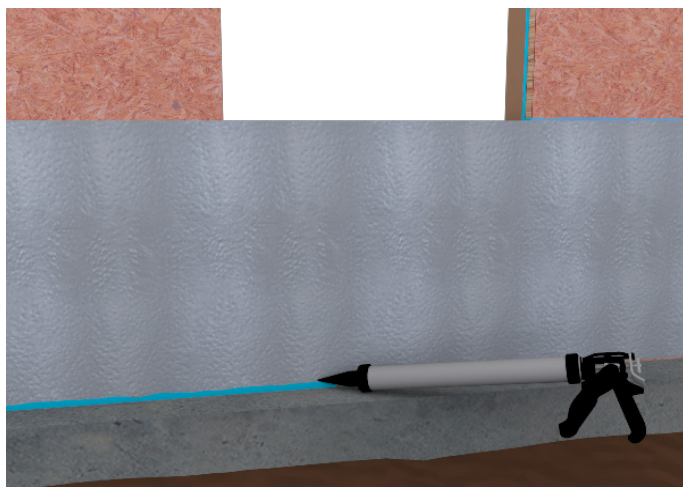
STEP 2

Apply and tool Blue Barrier Gap Filler sealant over and along board joints up to $\frac{3}{4}$ " wide; as well as any surface depressions, gaps, and voids in the wall or rough opening; to create a smooth, flush, continuous, and fully-supported substrate. For board joints and gaps larger than $\frac{3}{4}$ ", provide a sized backer rod in the joint, then apply and tool Blue Barrier Gap Filler sealant for a flush substrate.

STEP 2A

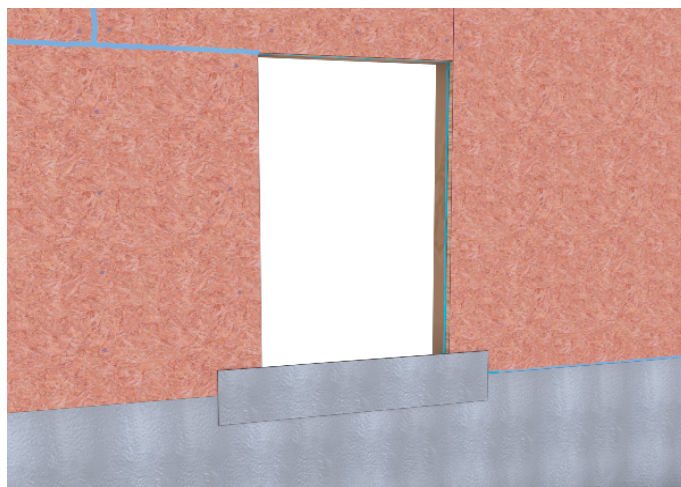
Apply 650 WB Liquid Adhesive available (water-based) primer to substrates at a rate of 350 – 400 sf / gal, or use ClearBond Liquid Adhesive (solvent-based) applied at a rate of 250 – 300 sf / gal. Re-apply the liquid adhesive primer if stickiness (tack) has dissipated, or if membrane is not applied to adhesive in same day, prior to the next step. Follow these guidelines for all upcoming steps discussing the use of the liquid adhesive primer.

REV 05/24/2023



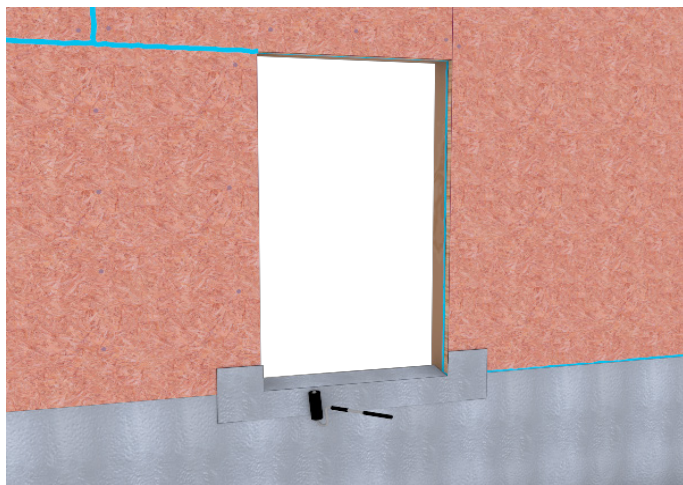
STEP 3

Beginning at the base of wall install the UV2-40 membrane. The membrane can be installed either horizontally (as shown here) or vertically, providing there is the recommended minimum 2-1/2" side lap and minimum 4-inch end lap. Be sure to prime all membrane side and end laps too and shingle any horizontally-oriented field sheets in a manner to properly shed water. As the UV2-40 Membrane field sheets are properly installed, use a hand roller to backroll each UV2-40 Membrane sheet to provide proper adhesive bond. Align membrane horizontally along the face of the rough opening sill, as shown, for proper rough opening flashing overlay materials to be described in subsequent steps. A tooled 3/4" bead of BBGF should be applied at the base of sheathing tying it to the top of the foundation. This instruction is designed for above-grade air barrier/WRB placement, so do not use for below-grade waterproofing applications. For bottom 2'-0" of above-grade wall, protect installed horizontal UV2-40 membrane at brick ledge with a sacrificial piece of 15# felt as separation of materials to prevent "galvanic reaction" with subsequent wet cementitious mortar products used during brickwork.



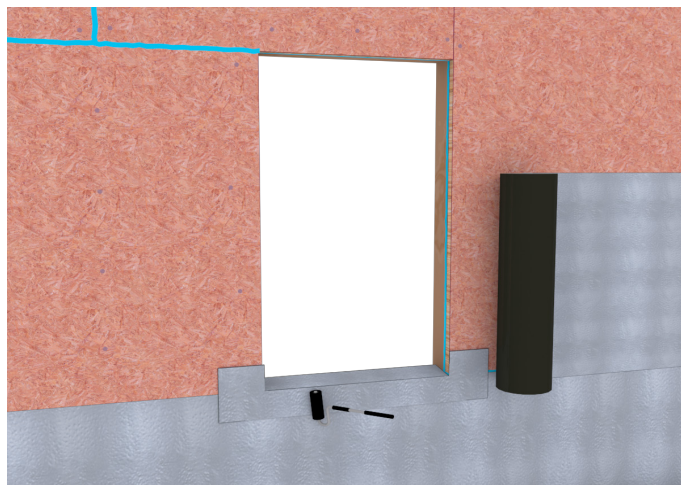
STEP 4

To install UV2-40 Membrane as sill flashing, measure and cut-to-fit one (1) new piece of UV2-40 flashing greater than 9 inches of the width of the rough opening sill, center the flashing across the wall face of the rough opening sill, remove the release liner, and install the flashing on the wall face of the rough opening sill prepared with 650 WB Liquid Adhesive or prepared with ClearBond Liquid Adhesive. Once the flashing is properly installed, use a hand roller to backroll the UV2-40 sill flashing.



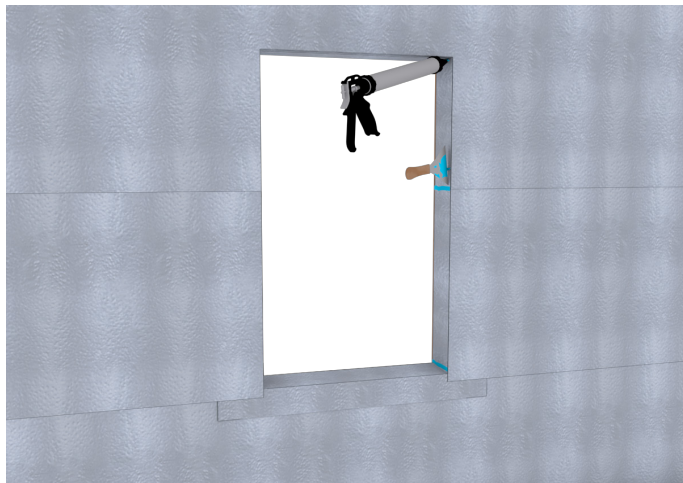
STEP 5

Provide relief cuts in the sill flashing to allow the UV2-40 flashing membrane to fold down into the clean and dry rough opening sill prepared with 650 WB Liquid Adhesive or prepared with ClearBond Liquid Adhesive. Once the flashing is properly installed, use a hand roller to backroll the entire UV2-40 flashing across the wall face of the rough opening sill, as well as the horizontal leg laid flat into the rough opening sill.



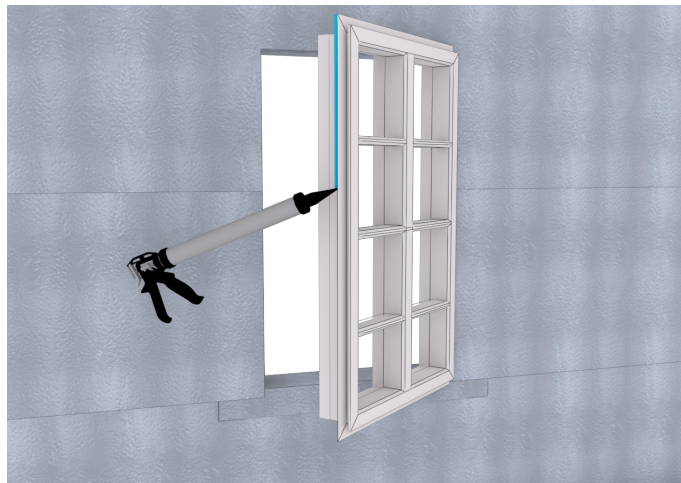
STEP 6

Continuing on the prepared wall, install the UV2-40 membrane with 100% adhesion and complete coverage of the wall surface. The membrane can be installed either horizontally (as shown here) or vertically, providing there is the recommended minimum 2-1/2-inch side lap and minimum 4-inch end lap. Be sure to prime all membrane side laps and end laps too, and shingle any horizontally-oriented field sheets in a manner to properly shed water. As the UV2-40 membrane field sheets are properly installed, use a hand roller to backroll each UV2-40 membrane sheet.



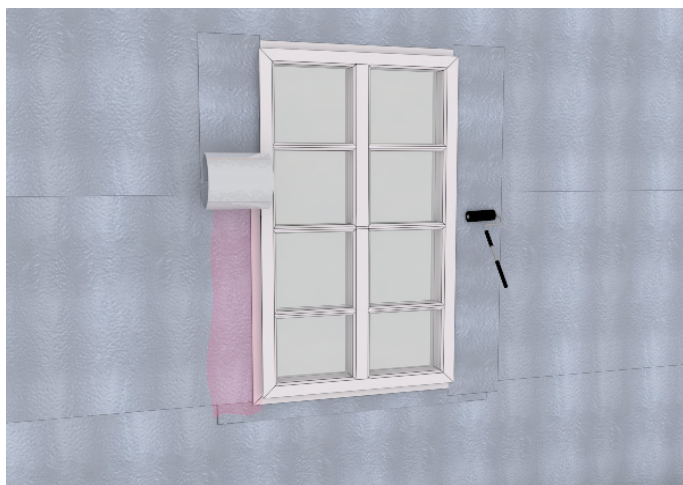
STEP 7

Install UV2-40 membrane field sheets with complete coverage on the wall face and extending into clean and dry rough opening jambs prepared with 650 WB Liquid Adhesive or prepared with ClearBond Liquid Adhesive. Once the membrane is properly installed, use a hand roller to backroll the entire UV2-40 Membrane in the rough opening jambs. Then seal all exposed membrane edges with a minimum 30-mil tooled application of BBGF to provide a proper edge seal of the membrane's exposed asphalt compound.



STEP 8

At time of window installation, provide window manufacturer's approved sealant installed along inside face of flange. If allowed by window manufacturer's instructions and warranty, the BBGF sealant can be used (as shown here) in lieu of the other approved sealant(s). Polyguard recommends leaving the window sill flange open, without sealant, to allow any trapped moisture that may build-up over time to properly drain. Set window into rough opening as plumb, level, and square, then secure per window manufacturer's instructions.



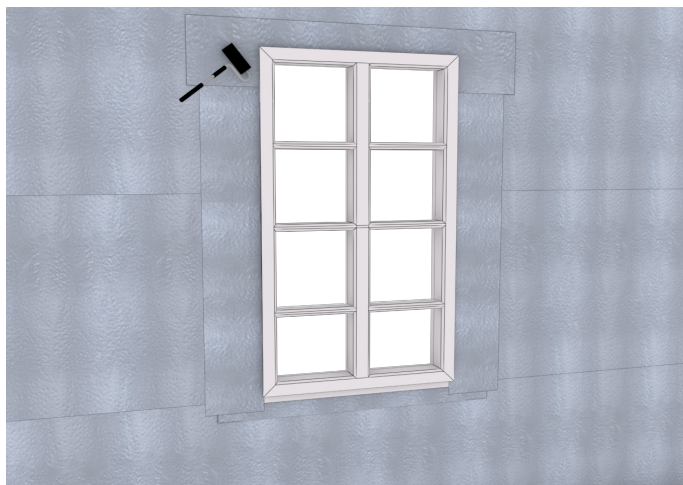
STEP 9

Measure and cut-to-fit two (2) new pieces of UV2-40 flashing (available in 6", 9" and 12" widths) to install along the window jamb flanges and overlap the installed membrane sill flashing. Prior to installing the (2) cut pieces over and along the window jamb flanges, prepare all surfaces with 650 WB Liquid Adhesive or with ClearBond Liquid Adhesive. Then center the flashing pieces across the rough opening jambs, remove the release liner, and install the flashing on the rough opening jambs. Once the flashings are properly installed, use a hand roller to backroll the UV2-40 flashing across the rough opening jambs.



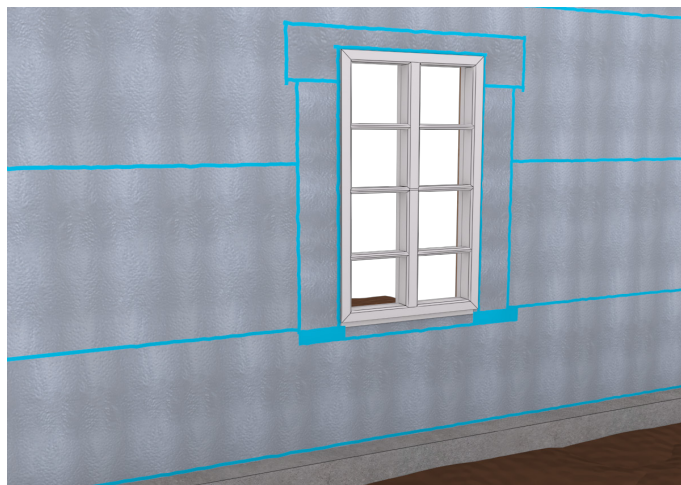
STEP 10

Measure and cut-to-fit one (1) piece of UV2-40 flashing 9 inches longer than the width of the window head. Prior to installing the head flashing piece, prepare all surfaces with 650 WB Liquid Adhesive or with ClearBond Liquid Adhesive. Then center the flashing piece across the window head, remove the release liner, and install the flashing on the window head.



STEP 11

Once the flashing is properly installed, use a hand roller to backroll the UV2-40 flashing across the window head.



STEP 12

Seal all exposed UV2-40 membrane edges and flashing edges with a minimum 30-mil tooled application of BBGF to provide a proper edge seal of the membrane's exposed asphalt compound. Shown is a finished view of the installed window with UV2-40 membrane. Completely cover all UV2-40 membrane with choice of siding or trim within the designated maximum 2-year UV exposure limit.